

[Manuals.plus](#) /

> [Bellababy](#) /

> Bellababy Wearable Breast Pump User Manual

## Bellababy BLA8040

# Bellababy Wearable Breast Pump User Manual

MODEL: BLA8040



Image: Bellababy Wearable Breast Pump, showing the main unit with the collection cup attached.

## Introduction

Thank you for choosing the Bellababy Wearable Breast Pump. This hands-free breast pump is designed to provide an efficient and comfortable milk expression experience for mothers, allowing for discreet pumping at home, in the office, or on the go. Its compact design and advanced features aim to simplify your breastfeeding journey.

Key features include:

- **Efficient and Comfortable:** Designed with 4 modes and 9 levels of suction strength, offering various combinations to optimize milk production efficiently and comfortably.
- **Strong Suction, Pain-Free:** Features a superior motor for strong suction, optimized to ensure efficient and pain-free breast emptying.
- **Quiet and Practical:** Quality motor and meticulous workmanship reduce noise by 48%, allowing for discreet pumping without disturbance.
- **Easy and Convenient:** Equipped with a start/pause button, adjustable strength controls (+ and -), and an LCD display showing pumping time, suction mode, and strength level.

- **Fewer Parts, Easy Cleaning:** Tidy, unique design with fewer parts for easy assembly, disassembly, and cleaning, saving valuable time.

## Safety Information

---

Please read all instructions carefully before using the Bellababy Wearable Breast Pump. Keep this manual for future reference.

- Always inspect all pump parts before each use for any damage or wear. Replace damaged parts immediately.
- Ensure all parts are clean and sterilized before initial use and after each subsequent use.
- Do not immerse the motor unit in water or other liquids. Clean the motor unit with a damp cloth only.
- Keep the pump and its accessories out of reach of children.
- Use only the original power adapter and cable provided with the pump.
- If you experience pain or discomfort during pumping, reduce the suction level or stop pumping. Consult a lactation consultant or healthcare professional if discomfort persists.
- Do not use the pump while sleeping or overly drowsy.

## Package Contents

---

Your Bellababy Wearable Breast Pump package typically includes:

- Bellababy Pump Motor Unit
- Milk Collector Cup (24mm flange size)
- Silicone Diaphragm
- Silicone Valve (Duckbill Valve)
- USB-C Charging Cable
- User Manual
- Additional spare parts (e.g., spare duckbill valve, silicone ring) may be included.

## Product Overview

---

Familiarize yourself with the main components of your Bellababy Wearable Breast Pump:



Image: Fully assembled Bellababy Wearable Breast Pump, showing the motor unit connected to the milk collection cup.



Image: Close-up of the Bellababy pump's LCD touch screen, displaying pumping time, suction mode, and intensity levels.

The pump features an intuitive LCD touch screen for easy operation. The main unit houses the motor and controls, while the collection cup and silicone parts are designed for direct milk collection and comfortable fit.

## Setup

Before first use, disassemble and clean all parts that come into contact with breast milk. Sterilize them according to the cleaning instructions.

Follow these steps to assemble your Bellababy Wearable Breast Pump:

1. Ensure all parts are dry after cleaning and sterilization.
2. Insert the silicone valve (duckbill valve) firmly into the bottom of the milk collector cup. Ensure it is securely seated to prevent leaks and maintain suction.
3. Place the silicone diaphragm onto the top of the milk collector cup, ensuring a tight seal around the edges.
4. Align the motor unit with the assembled milk collector cup and press down firmly until it clicks into place. Ensure the connection is secure.

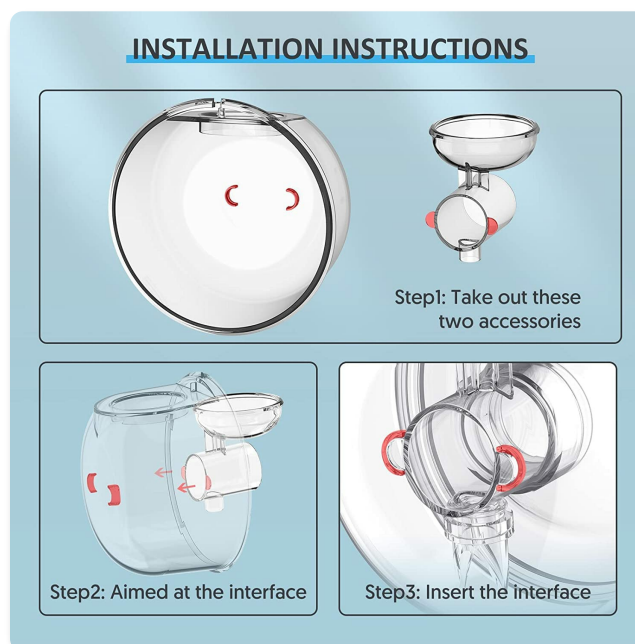


Image: Visual guide for assembling the Bellababy Wearable Breast Pump, showing the steps to connect the accessories to the main unit.

## Operating Instructions

Using your Bellababy Wearable Breast Pump is straightforward. Follow these steps for optimal performance:

1. **Charge the Pump:** Before first use, fully charge the pump using the provided USB-C cable. The battery indicator on the LCD screen will show charging status.
2. **Positioning:** Place the assembled pump inside your nursing bra, ensuring the flange is centered over your nipple. Adjust for a comfortable and secure fit.
3. **Power On:** Press and hold the power button on the LCD touch screen to turn on the pump.
4. **Select Mode:** The pump has 4 modes. Press the mode button (often indicated by a waveform or 'M' icon) to cycle through the available modes (e.g., massage, expression).
5. **Adjust Suction Level:** Use the '+' and '-' buttons on the touch screen to adjust the suction intensity. There are 9 levels of suction strength. Start with a lower level and gradually increase to a comfortable yet effective setting.
6. **Pumping Session:** The LCD screen will display the pumping time. The pump is designed to automatically shut off after 30 minutes.
7. **Pause/Stop:** Press the power button briefly to pause the pumping session. Press and hold to turn off the pump.
8. **Remove Pump:** Once finished, carefully remove the pump from your bra.
9. **Pour Milk:** Detach the motor unit from the collection cup and carefully pour the expressed milk into a storage bottle or bag.



Image: A mother demonstrating the hands-free use of two Bellababy wearable breast pumps while holding her baby.



Image: A mother interacting with her baby while discreetly wearing a Bellababy wearable breast pump.



Image: A mother pouring expressed milk from the Bellababy collection cup into a baby bottle.

## Flange Sizing Guide

Proper flange sizing is crucial for comfortable and efficient pumping. The Bellababy Wearable Breast Pump comes with a 24mm flange. If this size is not suitable, consider purchasing inserts for a better fit.

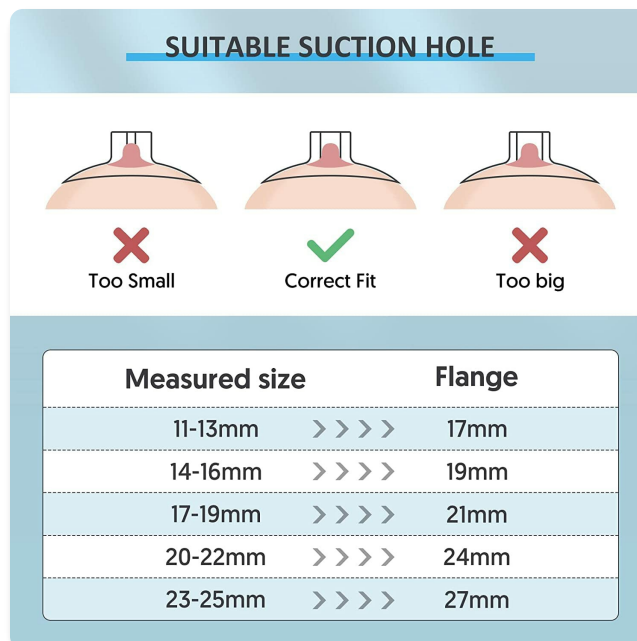


Image: Chart illustrating suitable nipple sizes for various flange sizes, helping users determine the correct fit for comfortable pumping.

## Helpful Videos

Your browser does not support the video tag.

Video: "Buyer using experience sharing of Pump 8040" - A short video demonstrating a user's experience with the Bellababy pump, showcasing its hands-free convenience.

Your browser does not support the video tag.

Video: "Using experience sharing of pump 8040" - Another brief video from a user, highlighting practical aspects of using the Bellababy wearable breast pump.

## Cleaning and Maintenance

Proper cleaning and maintenance are essential for hygiene and the longevity of your breast pump. The Bellababy pump is designed with fewer parts for easier cleaning.

1. **Disassembly:** After each use, disassemble all parts that come into contact with breast milk (milk collector cup, silicone diaphragm, silicone valve).

2. **Rinse:** Rinse these parts immediately with cold water to remove any milk residue.
3. **Wash:** Wash parts in warm, soapy water using a dedicated brush. Ensure all milk residue is removed.
4. **Rinse Thoroughly:** Rinse all parts thoroughly under clean running water.
5. **Sterilize:** For initial use and at least once daily, sterilize the parts. This can be done by boiling for 5 minutes, using a steam sterilizer, or a UV sterilizer. *Note: UV sterilization may cause plastic discoloration over time, which is normal and does not affect function.*
6. **Dry:** Air dry all parts on a clean drying rack or use a clean cloth. Ensure they are completely dry before reassembly or storage to prevent mold growth.
7. **Motor Unit Cleaning:** Wipe the exterior of the motor unit with a clean, damp cloth. Do not immerse the motor unit in water.
8. **Storage:** Store clean, dry parts in a clean, dry place when not in use.

## Troubleshooting

If you encounter issues with your Bellababy Wearable Breast Pump, refer to the following common troubleshooting tips:

Problem	Possible Cause	Solution
No suction or weak suction	<p>Silicone valve (duckbill) is damaged or not properly seated.</p> <p>Silicone diaphragm is not sealed correctly.</p> <p>Motor unit not securely attached to the collection cup.</p> <p>Flange size is incorrect.</p> <p>Battery is low.</p>	<p>Check and re-seat the silicone valve. Replace if torn or damaged.</p> <p>Ensure the silicone diaphragm is flat and sealed tightly.</p> <p>Press the motor unit firmly onto the collection cup until it clicks.</p> <p>Verify your flange size using the sizing guide.</p> <p>Charge the pump fully.</p>
Pump not turning on	<p>Battery is depleted.</p> <p>Power button not pressed correctly.</p>	<p>Charge the pump.</p> <p>Press and hold the power button for a few seconds.</p>
Milk leaking from pump	<p>Parts not assembled correctly.</p> <p>Collection cup is overfilled.</p> <p>Silicone valve or diaphragm is damaged.</p>	<p>Reassemble all parts carefully, ensuring tight seals.</p> <p>Do not exceed the maximum fill line on the collection cup.</p> <p>Inspect and replace damaged silicone parts.</p>
Unusual noise during operation	<p>Parts not assembled correctly.</p> <p>Foreign object in the pump mechanism.</p>	<p>Disassemble and reassemble all parts.</p> <p>Inspect for any obstructions. If noise persists, contact customer support.</p>

If the problem persists after trying these solutions, please contact Bellababy customer support for further assistance.

## Specifications

Feature	Detail
Model Number	BLA8040

Feature	Detail
Product Dimensions	1.97 x 3.94 x 5.91 inches
Item Weight	15.2 ounces
Material Type	Silicone
Power Source	Battery Powered
Modes	4
Suction Levels	9
Flange Size	24mm (standard)
Dishwasher Safe	No

## Warranty and Support

---

For information regarding warranty coverage, returns, or technical support for your Bellababy Wearable Breast Pump, please refer to the warranty card included in your product packaging or visit the official Bellababy website. You may also contact the seller directly through the platform where you made your purchase.

For additional resources and product information, you can visit the [Bellababy Store on Amazon](#).

© 2024 Bellababy. All rights reserved.

This manual is for informational purposes only. Product specifications are subject to change without notice.