

## AeroCool MIRAGEL240W

# AeroCool Mirage L240 ARGB Liquid Cooler User Manual

Model: MIRAGEL240W

## INTRODUCTION

---

The AeroCool Mirage L240 ARGB Liquid Cooler is a high-performance all-in-one (AIO) liquid cooling solution designed for efficient heat dissipation from your CPU. Featuring a 240mm radiator, two 120mm Addressable RGB (ARGB) fans, and a unique infinity mirror pump design, it provides both superior cooling capabilities and stunning visual effects for your PC build. This manual provides detailed instructions for installation, operation, and maintenance to ensure optimal performance and longevity of your cooler.



Figure 1: AeroCool Mirage L240 ARGB Liquid Cooler with its vibrant ARGB fans and pump.

## WHAT'S IN THE BOX

---

Please verify that all components are present before beginning installation.

- AeroCool Mirage L240 ARGB Liquid Cooler (Radiator, Pump, and Tubing pre-assembled)
- 2 x 120mm ARGB Fans
- Mounting Hardware Kit (for Intel and AMD sockets)
- Fan and Radiator Mounting Screws
- Thermal Paste (pre-applied or in a tube)
- ARGB Controller (if not motherboard sync compatible)
- User Manual (this document)

Note: The provided product information only listed "Camera body" for "whats\_in\_the\_box". This is a generic list for a liquid cooler.

## SPECIFICATIONS

Feature	Detail
Brand	AeroCool
Model Number	ACLA-MR2412771
Cooling Method	Water
Radiator Size	240mm
Fan Size	120mm
Number of Fans	2
Noise Level	20.2 dB
Voltage	12 Volts
Wattage	400W (System Power)
Power Connector Type	3-pin
Compatible Devices	Desktop
Material	Metal
Product Dimensions	12.99"L x 8.07"W x 5.39"H
First Available Date	February 10, 2021

## SETUP AND INSTALLATION

Follow these steps carefully to install your AeroCool Mirage L240 ARGB Liquid Cooler.

### 1. Prepare Your System

1. Power off your computer and unplug it from the wall outlet.
2. Open your PC case and remove any existing CPU cooler.
3. Clean the CPU surface thoroughly with isopropyl alcohol to remove old thermal paste.

### 2. Install Radiator and Fans

1. Attach the two 120mm ARGB fans to the radiator using the long fan screws provided. Ensure the fan airflow direction is as desired (typically exhaust out of the case or intake into the case).
2. Mount the radiator assembly to an available 240mm fan mount location in your PC case (e.g., top, front, or rear). Use the shorter radiator screws to secure it.



Figure 2: Radiator and fans assembled, ready for mounting in the PC case.

### 3. Install CPU Pump/Cold Plate

1. Select the appropriate mounting brackets for your CPU socket (Intel or AMD) from the hardware kit. Attach them to the pump unit.
2. If thermal paste is not pre-applied, apply a small pea-sized amount to the center of your CPU's integrated heat spreader (IHS).
3. Carefully place the pump/cold plate assembly onto the CPU, aligning the mounting holes.
4. Secure the pump to the motherboard using the provided thumb screws or nuts, tightening them in a diagonal pattern until snug. Do not overtighten.

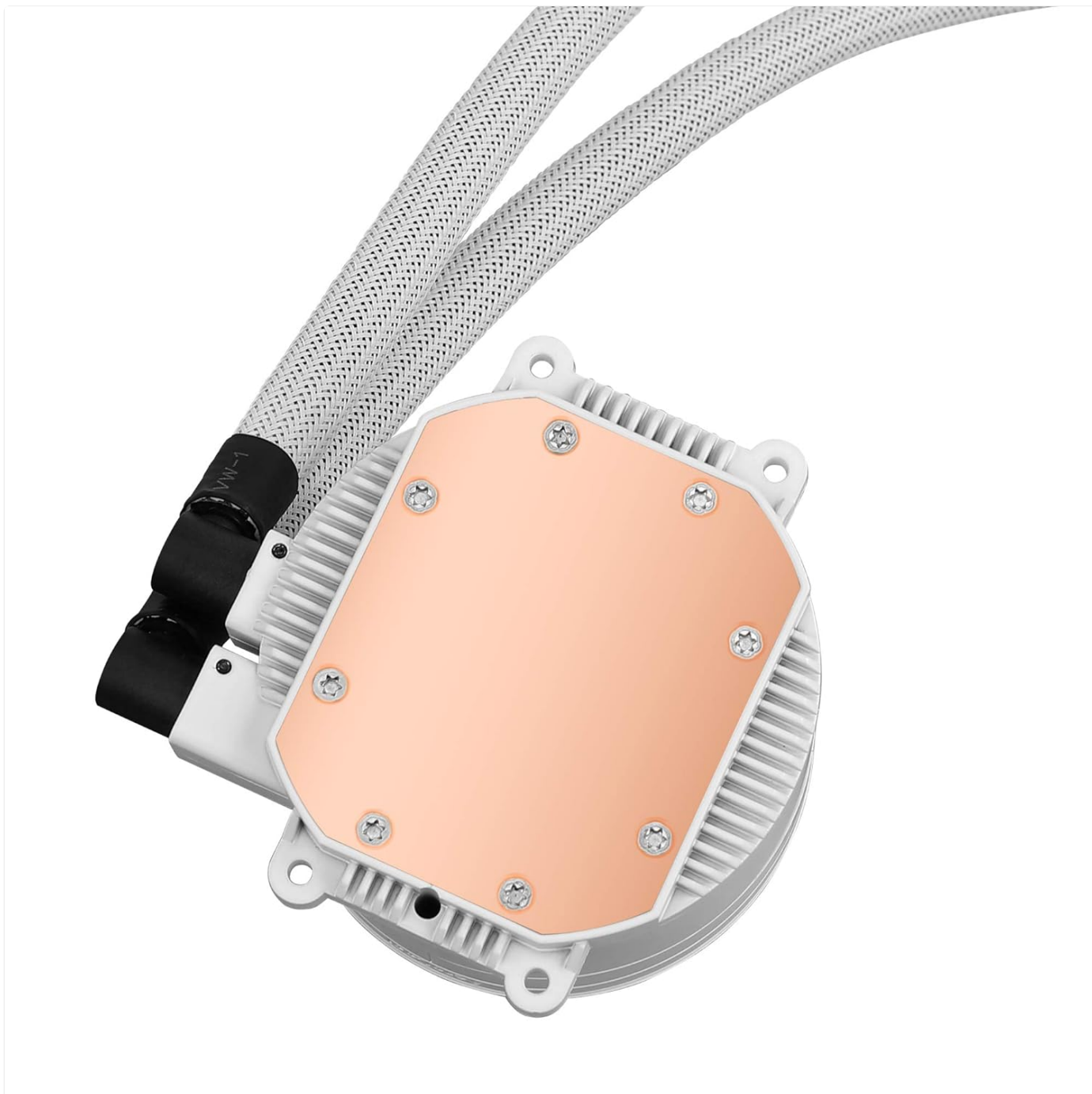


Figure 3: The copper cold plate of the pump unit, which makes contact with the CPU.

#### 4. Connect Cables

1. Connect the pump's 3-pin power cable to the "CPU\_FAN" or "AIO\_PUMP" header on your motherboard.
2. Connect each fan's 4-pin PWM cable to available fan headers on your motherboard (e.g., "SYS\_FAN").
3. Connect the ARGB cables from the fans and pump to your motherboard's 3-pin 5V ARGB header or to the included ARGB controller. Ensure correct polarity to avoid damage.
4. Organize cables for good airflow and aesthetics.

### OPERATING INSTRUCTIONS

---

Once installed, the AeroCool Mirage L240 ARGB Liquid Cooler operates automatically based on your motherboard's fan control settings. The pump runs continuously to circulate coolant, and fan speeds adjust according to CPU temperature.

#### ARGB Lighting Control

- **Motherboard Sync:** If connected to a compatible motherboard ARGB header, you can control the lighting effects using your motherboard's RGB software (e.g., ASUS Aura Sync, MSI Mystic Light Sync, GIGABYTE RGB Fusion, ASRock Polychrome Sync).
- **ARGB Controller:** If using the included ARGB controller (if applicable), refer to its specific instructions for changing lighting modes, colors, and brightness.

## MAINTENANCE

---

Regular maintenance helps ensure the longevity and optimal performance of your liquid cooler.

- **Dust Cleaning:** Periodically (every 3-6 months, or more often in dusty environments) power off your PC and use compressed air to clean dust from the radiator fins and fan blades. This prevents airflow restriction and maintains cooling efficiency.
- **Visual Inspection:** Check the tubing and connections for any signs of leaks or damage. While rare, early detection can prevent issues.
- **Fan Operation:** Ensure all fans are spinning freely and quietly. Replace any fans that become noisy or stop working.



Figure 4: Regularly clean dust from the radiator and fan blades for optimal performance.

## TROUBLESHOOTING

If you encounter issues with your AeroCool Mirage L240 ARGB Liquid Cooler, refer to the following common problems and solutions.

Problem	Possible Cause / Solution
---------	---------------------------



Problem	Possible Cause / Solution
High CPU Temperatures	<ul style="list-style-type: none"><li>• Pump not running: Check pump power connection to motherboard (CPU_FAN or AIO_PUMP header). Ensure it's receiving power.</li><li>• Fans not spinning: Check fan power connections. Ensure they are connected to motherboard fan headers and configured correctly in BIOS/UEFI.</li><li>• Poor thermal paste contact: Re-seat the pump/cold plate on the CPU. Ensure thermal paste is applied correctly and evenly.</li><li>• Radiator clogged with dust: Clean the radiator fins thoroughly.</li><li>• Air bubbles in loop: Orient the radiator higher than the pump if possible, or gently tilt the case to help air bubbles move to the radiator.</li></ul>
ARGB Lighting Not Working	<ul style="list-style-type: none"><li>• Incorrect ARGB connection: Ensure the 3-pin 5V ARGB cable is connected to the correct header on the motherboard or controller. Do NOT connect to 12V RGB headers.</li><li>• Software issue: Check your motherboard's RGB software or ARGB controller settings. Update software if necessary.</li><li>• Loose connection: Re-check all ARGB cable connections.</li></ul>
Unusual Noises (Gurgling, Whining)	<ul style="list-style-type: none"><li>• Gurgling: Often caused by air bubbles in the loop. This usually subsides after a few hours of operation. Ensure radiator is mounted higher than the pump.</li><li>• Whining/Grinding: Could indicate a failing pump or fan. Contact support if persistent and loud.</li></ul>

## WARRANTY AND SUPPORT

AeroCool products are designed for reliability and performance. For warranty information, technical support, or to inquire about replacement parts, please visit the official AeroCool website or contact their customer service department.

**Official Website:** [www.aerocool.io](http://www.aerocool.io)




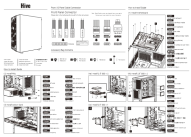
Please have your product model number (MIRAGEL240W or ACLA-MR2412771) and purchase date ready when contacting support.



### Related Documents - MIRAGEL240W

	<p><a href="#">Aerocool Mirage Gold Power Supply User Manual</a></p> <p>User manual for the Aerocool Mirage Gold series of power supplies, including safety reminders and product specifications.</p>
	<p><a href="#">AeroCool Cylon 4 / Cylon 4F PWM ARGB CPU Air Cooler Installation Guide</a></p> <p>This guide provides step-by-step instructions for installing the AeroCool Cylon 4 and Cylon 4F PWM ARGB CPU Air Cooler on both Intel and AMD platforms. It details the included components and the mounting process for optimal performance.</p>



	<p><a href="#">AeroCool Skribble RGB ARGB Mid Tower Case Installation Guide</a></p> <p>Detailed installation instructions for the AeroCool Skribble RGB ARGB Mid Tower PC Case. This guide covers motherboard, PSU, SSD, fan, and radiator installation, along with I/O panel and RGB fan hub connectivity, presented in English.</p>
	<p><a href="#">Aerocool Air Frost 2 / Air Frost 4 RGB CPU Air Cooler Installation Guide</a></p> <p>This guide provides instructions for installing the Aerocool Air Frost 2 and Air Frost 4 RGB CPU Air Coolers. It covers compatibility, mounting hardware, and step-by-step assembly for both Intel and AMD platforms.</p>
	<p><a href="#">Aerocool VX PLUS / VX PLUS RGB Power Supply User Manual</a></p> <p>User manual for Aerocool VX PLUS and VX PLUS RGB series power supply units, detailing installation, safety precautions, and specifications.</p>
	<p><a href="#">AeroCool Hive Computer Case Installation Guide</a></p> <p>Comprehensive installation guide for the AeroCool Hive computer case, detailing motherboard, PSU, SSD, radiator, and fan mounting, along with front panel I/O connections and controls.</p>