

Manuals+

[Q & A](#) | [Deep Search](#) | [Upload](#)

[manuals.plus](#) /

› [FOAOOD](#) /

› [FOAOOD Outdoor Wi-Fi Battery Solar Surveillance Camera User Manual](#)

FOAOOD DF220-W2

FOAOOD Outdoor Wi-Fi Battery Solar Surveillance Camera User Manual

Model: DF220-W2

1. INTRODUCTION

Thank you for choosing the FOAOOD Outdoor Wi-Fi Battery Solar Surveillance Camera. This manual provides detailed instructions for the setup, operation, and maintenance of your new security camera system. Designed for outdoor use, this camera features a 5000mAh built-in battery and a solar panel for continuous power, ensuring 365 days of uninterrupted home protection. Key features include 1080P FHD image quality, color night vision, PIR human infrared detection to reduce false alarms, two-way audio communication, and an IP66 waterproof rating for all-weather performance.



Image: Two FOAOOD outdoor Wi-Fi battery solar surveillance cameras, each paired with a solar panel, ready for installation.

2. WHAT'S IN THE BOX

Please check the contents of your package to ensure all items are present and in good condition.

- FOAOOD Outdoor Wi-Fi Camera (DF220-W2)
- Solar Panel
- Mounting Bracket (for camera)
- Mounting Bracket (for solar panel)
- USB Charging Cable
- Mounting Screws and Wall Plugs
- User Manual (this document)



Acquisizione del Movimento Significativo

Rilevamento della temperatura PIR

Image: A clear layout of all components included in the FOAOOD camera package: the camera unit, solar panel, two types of mounting brackets, a USB charging cable, screws, wall plugs, and the user manual.

3. SETUP GUIDE

3.1 Initial Charging

Before first use, fully charge the camera's built-in 5000mAh battery using the provided USB cable. Connect the cable to the camera's charging port and a standard 5V USB power adapter (not included). A full charge ensures optimal performance and extends battery life.

Built-in 5000mAh Large Battery

It will last at least a month of use even without any sun.

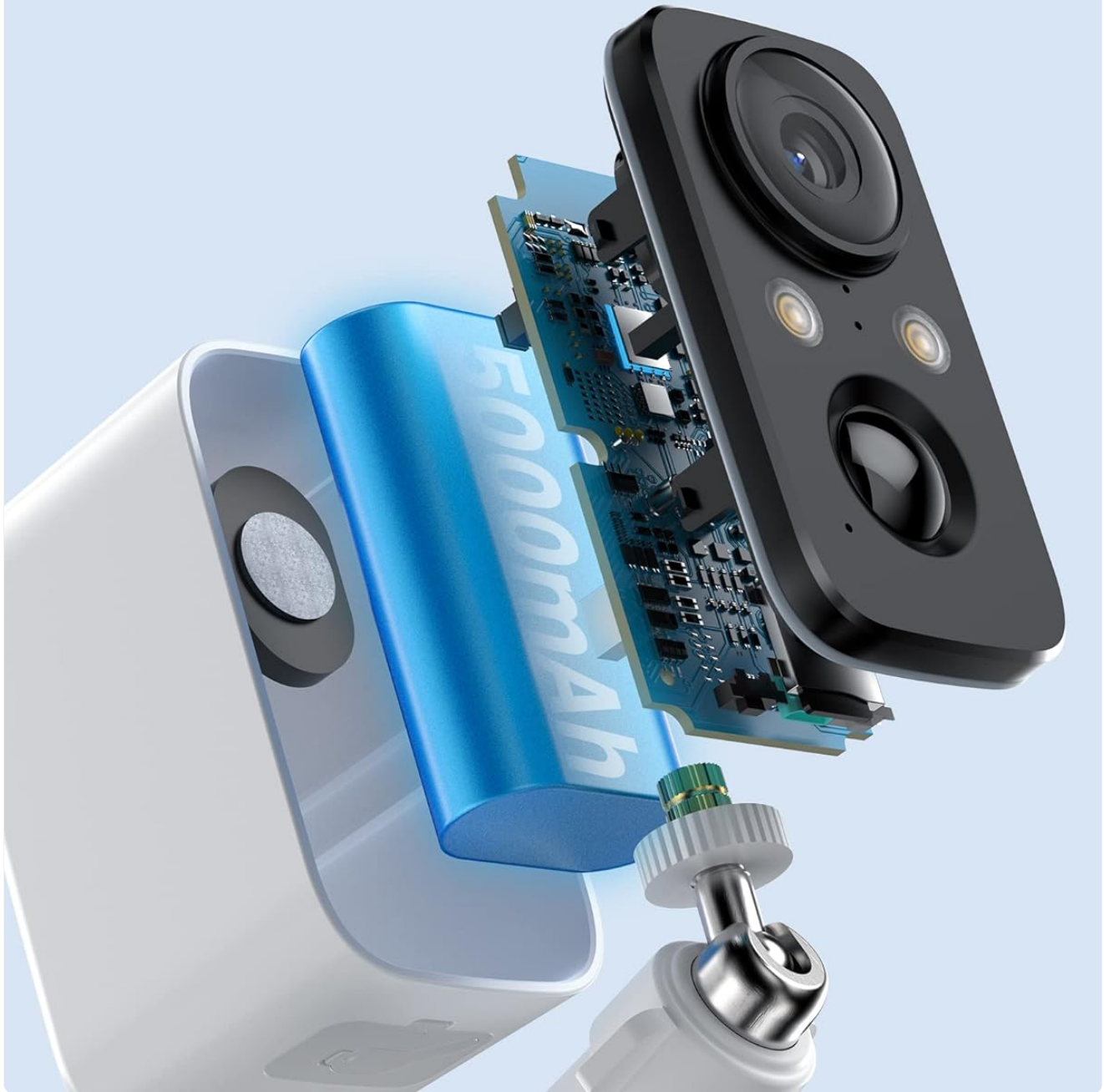


Image: An exploded view of the FOAOOD camera, highlighting its internal 5000mAh large capacity battery, which provides extended operation.

3.2 App Installation and Camera Pairing

The FOAOOD camera uses the CloudEdge application for control and monitoring. Download the CloudEdge app from your smartphone's app store (iOS or Android). Follow the in-app instructions to add your camera. Ensure your Wi-Fi network is 2.4GHz, as the camera supports this frequency.

3.3 Mounting the Camera and Solar Panel

Choose a suitable outdoor location for installation. The camera is IP66 waterproof, making it resistant to various

weather conditions. Mount the solar panel in a location that receives at least 2 hours of direct sunlight daily to ensure continuous charging. Connect the solar panel cable to the camera's charging port.



Image: An outdoor installation of the FOAOOD camera connected to its solar panel, emphasizing its ability to provide 365 days of continuous power without frequent recharging.

Esprimersi Sempre e Ovunque

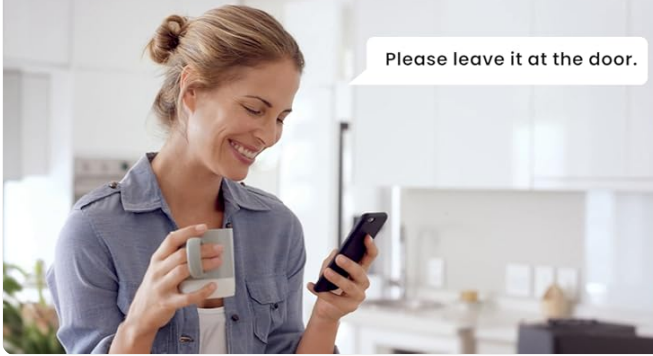


Image: A visual guide demonstrating correct installation practices for the solar panel to ensure optimal charging, alongside examples of incorrect placements that may hinder performance.

Nano-coating Waterproof Material, Specially Designed for Outdoor

Reach every place and protect your family in all aspects.



Image: The FOAOOD camera and its solar panel depicted in different weather scenarios, including bright sun, rain, and snow, to illustrate its IP66 waterproof and weather-resistant design.

4. OPERATING INSTRUCTIONS

4.1 Live View and Recording

Open the CloudEdge app to access the live feed from your camera. You can manually record video or capture screenshots directly from the live view. The camera supports 1080P FHD resolution for clear images.



Image: A visual comparison demonstrating the clarity of 1080P and 2K HD image quality provided by the FOAOOD camera, highlighting the detail captured by its 3.7-megapixel sensor.

4.2 Color Night Vision

The camera is equipped with 2 spotlights that enable color night vision, providing clear and detailed images even in low-light conditions. This feature ensures that nighttime surveillance is as effective as daytime monitoring.

NEW Technology of **Color Night Vision**

Light up the night like the day,
Provide you with a clearer image.



Image: The FOAOOD camera with its integrated spotlights illuminated, showcasing its advanced color night vision capability that brightens and clarifies nighttime scenes.



Image: A nighttime view captured by the FOAOOD camera, illustrating its starlight color night vision feature that provides clear and vibrant images even in very low light.

4.3 PIR Human Infrared Detection and Alarm Zones

The camera features PIR (Passive Infrared) human body detection, which significantly reduces false alarms caused by insects, leaves, rain, or snow. You can set optional alarm zones within the app to monitor specific areas of

interest. When motion is detected, the camera can emit sounds and flashes to deter intruders, and send real-time alerts to your smartphone.

More Advanced PIR Human Infrared Detection

With infrared detection, it reduces the impact of insects and leaves, and ensures that you will not be disturbed by irrelevant things.

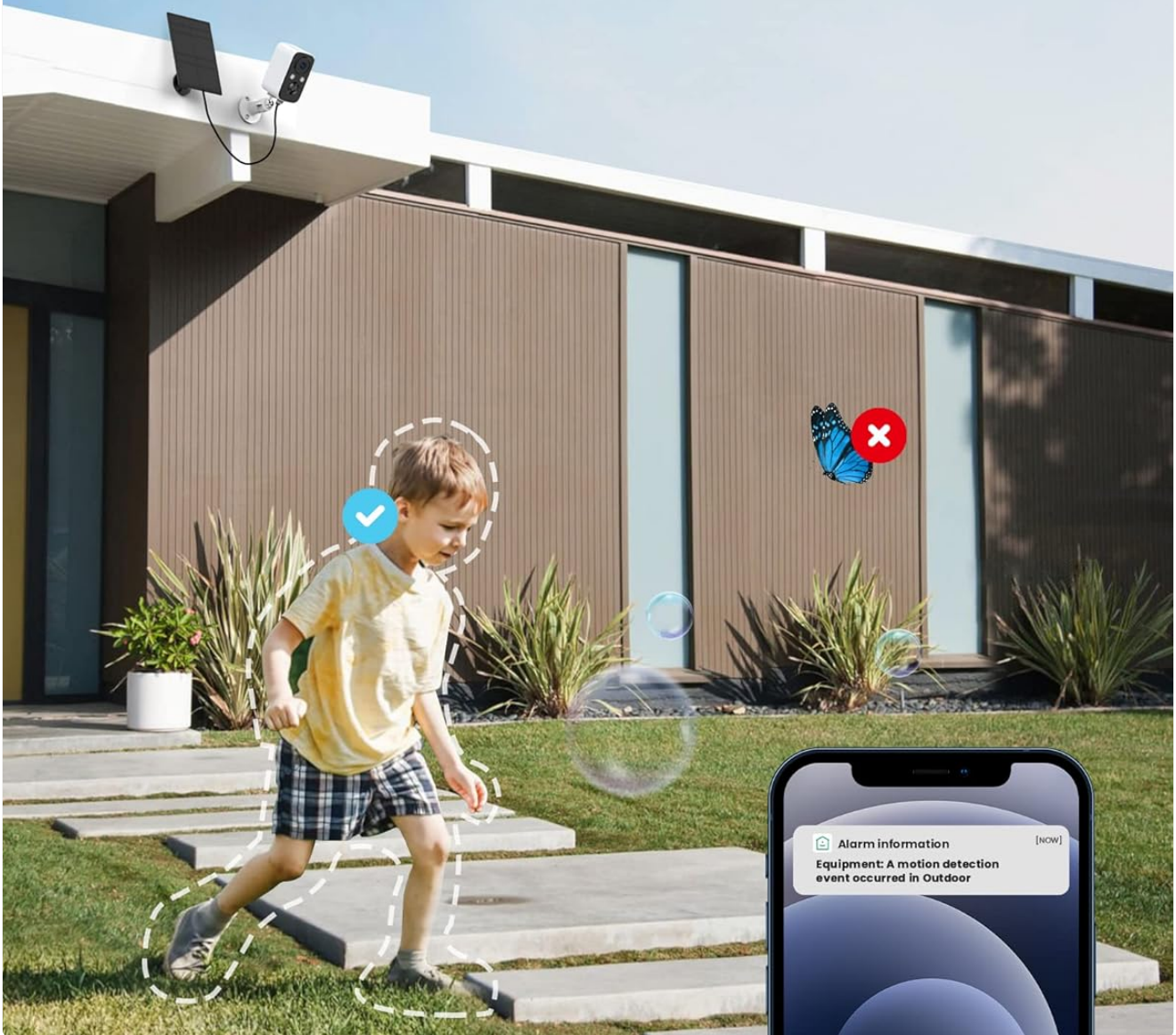


Image: The FOAOOD camera actively detecting a child in its field of view, demonstrating its advanced PIR human infrared detection capabilities that minimize irrelevant alerts.

Visualizzazione Simultanea di Più Dispositivi



Image: A smartphone screen displaying the CloudEdge app interface, illustrating how users can customize and define specific alarm zones for motion detection, ensuring alerts are only triggered in areas of concern.

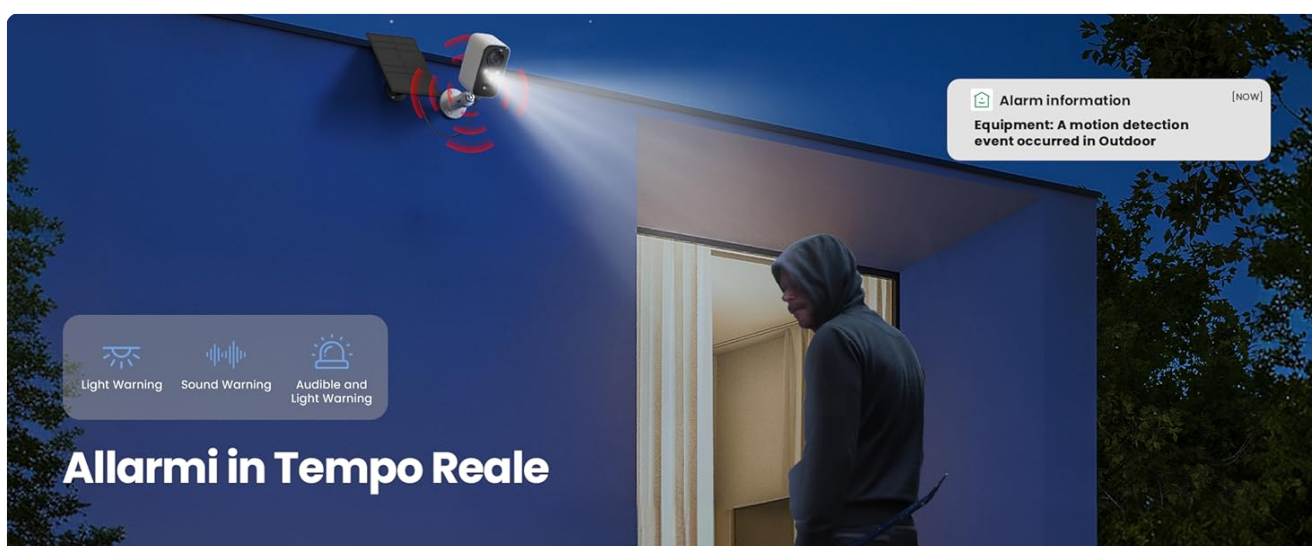
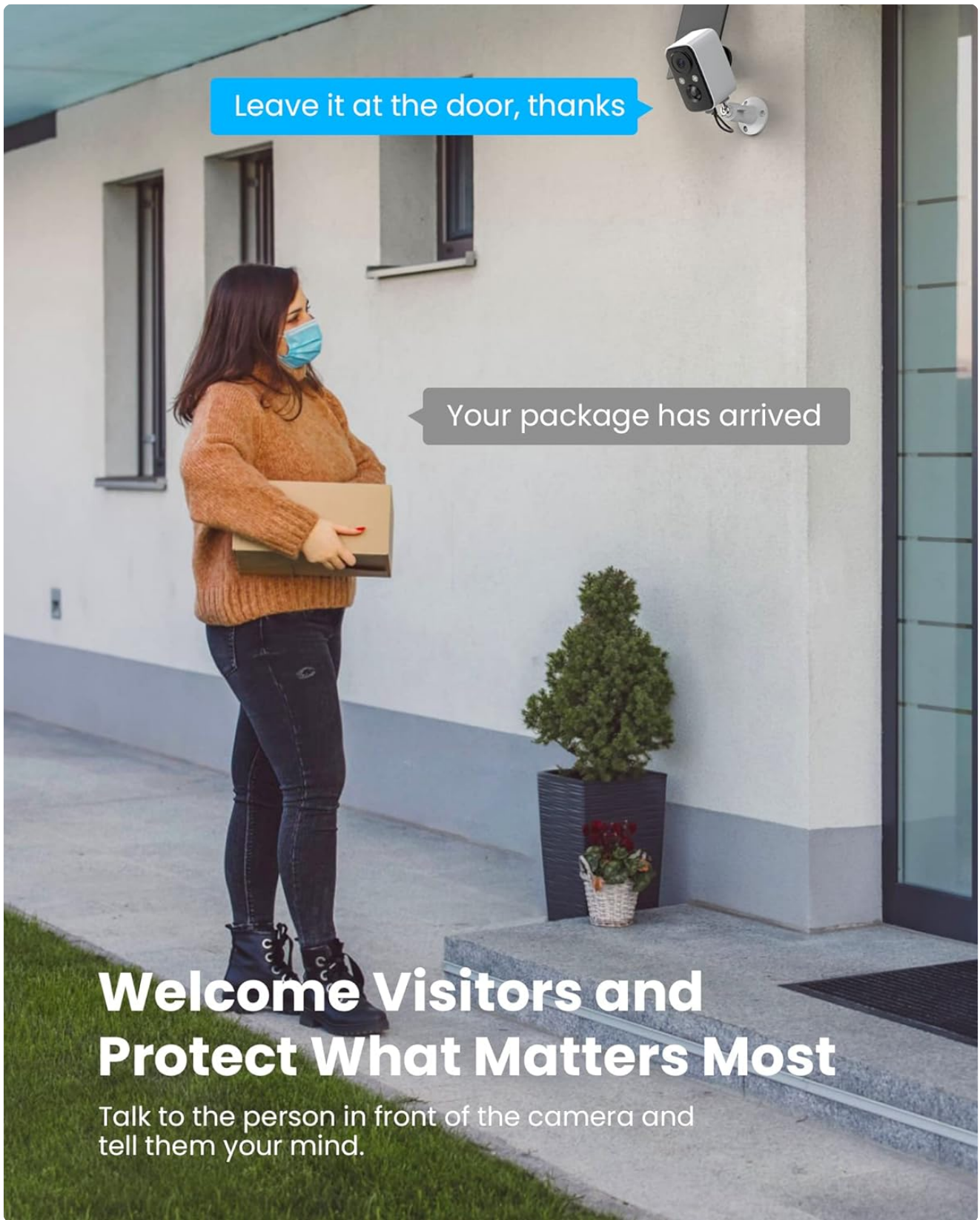


Image: The FOAOOD camera activating its light and sound alarm features in response to a detected presence, simultaneously sending a real-time alert notification to a smartphone.

4.4 Two-Way Audio Communication

The camera supports two-way audio, allowing you to speak directly with individuals near the camera through the CloudEdge app. This feature is useful for greeting visitors or deterring unwanted guests.



Welcome Visitors and Protect What Matters Most

Talk to the person in front of the camera and tell them your mind.

Image: A person speaking to a delivery driver through the FOAOOD camera, demonstrating the two-way audio feature for remote communication.

Installazione Corretta dei Pannelli Solari

Nota: solo installando correttamente il pannello solare è possibile caricare la telecamera!



Image: A user communicating remotely through the camera, illustrating the two-way audio feature that allows for speaking and listening from anywhere.

4.5 Storage Options

The camera supports local storage via a Micro SD card (not included) for continuous recording or event-triggered recordings. Optional cloud storage services are also available through the CloudEdge app for secure off-site backup of your video footage.

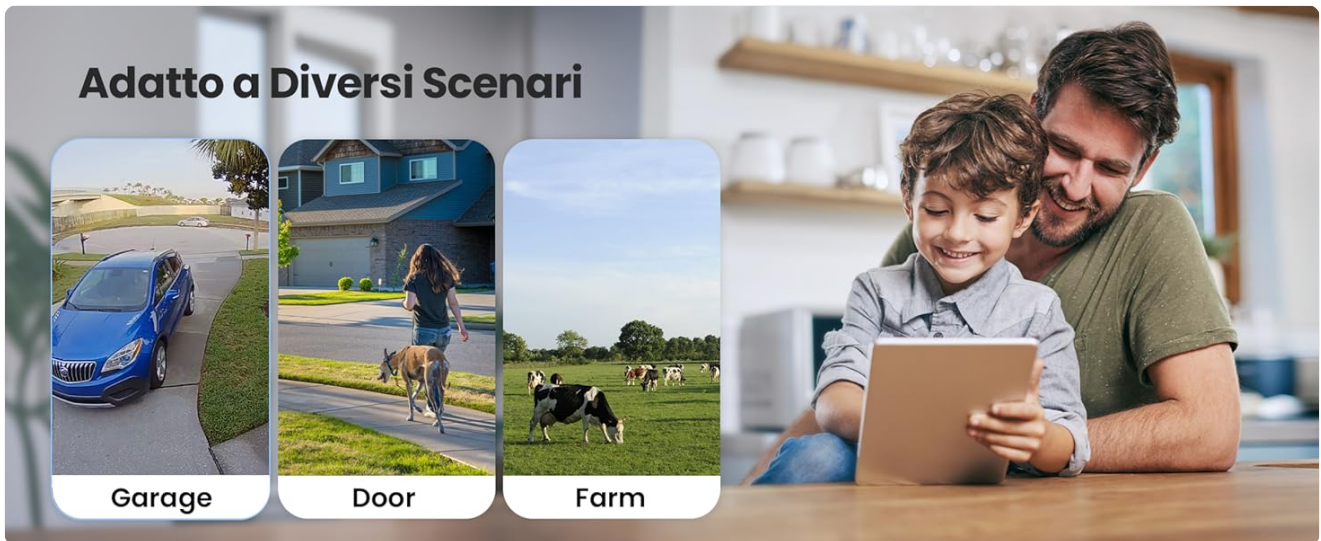


Image: A smartphone screen displaying the CloudEdge app's interface for managing video footage, showing options for local storage (Micro SD card) and optional cloud services.

4.6 Multi-Device Viewing and Sharing

You can view footage from multiple FOAOOD cameras simultaneously within the CloudEdge app. The app also allows you to share camera access with family members, enabling them to monitor the property as well.

Condivisione Multiutente



Image: A hand holding a smartphone displaying a grid of live feeds from multiple FOAOOD cameras, demonstrating the multi-device viewing capability.

5. MAINTENANCE

- **Cleaning:** Regularly wipe the camera lens and solar panel with a soft, damp cloth to ensure clear image quality and efficient solar charging. Avoid abrasive cleaners.
- **Battery Health:** While the solar panel provides continuous charging, in periods of prolonged low sunlight (e.g., winter or very cloudy days), you may need to occasionally charge the camera directly via USB to maintain optimal battery levels.
- **Firmware Updates:** Check the CloudEdge app periodically for firmware updates. Keeping your camera's firmware updated ensures the best performance and access to new features.

6. TROUBLESHOOTING

Problem	Possible Cause	Solution
Camera not connecting to Wi-Fi.	Incorrect Wi-Fi password; camera too far from router; 5GHz Wi-Fi network.	Ensure correct 2.4GHz Wi-Fi password. Move camera closer to router. Confirm your Wi-Fi is 2.4GHz.
Battery not charging or draining quickly.	Insufficient sunlight on solar panel; excessive motion detection; cold weather.	Relocate solar panel to receive more direct sunlight. Reduce motion detection sensitivity or frequency. In very cold weather, battery efficiency may decrease; consider temporary USB charging.
Frequent false alarms.	High PIR sensitivity; environmental factors (e.g., swaying branches, insects).	Adjust PIR sensitivity settings in the app. Define specific alarm zones to exclude irrelevant areas.
Blurred or distorted images in rain.	Water droplets on the lens.	Ensure the camera is installed with a small overhang or visor to protect the lens from direct rain. Regularly clean the lens.

Problem	Possible Cause	Solution
Two-way audio not working.	Microphone/speaker muted in app; poor network connection.	Check audio settings in the CloudEdge app. Ensure stable Wi-Fi connection.

7. SPECIFICATIONS

Model: DF220-W2

Color: White-2

Usage: Outdoor

Power Source: Battery Powered (5000mAh Lithium Polymer, included)

Connectivity: Wi-Fi (2.4GHz)

Video Capture Resolution: 1080p (Effective Video Resolution: 1080 Pixels)

Special Features: Color Night Vision, PIR Human Detection, Two-Way Talk, IP66 Waterproof

Mounting Type: Wall Mount

Material: Metal

Voltage: 5 Volts

Wattage: 8 watts

Operating Temperature: -4°F to 122°F (-20°C to 50°C)

Dimensions: 27 x 14.8 x 5.8 cm; 940 grams

8. WARRANTY AND SUPPORT

FOAOOD is committed to customer satisfaction. If you encounter any issues during the use of your camera, please do not hesitate to contact our customer support. We will provide timely and professional technical assistance to ensure a satisfactory solution.

For support, please refer to the contact information provided with your product packaging or visit the official FOAOOD website.

© 2024 FOAOOD. All rights reserved.

This manual is for informational purposes only. Product specifications and features are subject to change without notice.