

WORKPRO W159025

WORKPRO W159025 Cordless 3.6V Grass and Hedge Trimmer User Manual

Model: W159025 | Brand: WORKPRO

[Introduction](#) [Safety](#) [Contents](#) [Overview](#) [Setup](#) [Operation](#) [Maintenance](#) [Troubleshooting](#) [Specifications](#)

& Support

1. INTRODUCTION

The WORKPRO W159025 is a versatile cordless 3.6V grass and hedge trimmer designed for efficient garden maintenance. This tool features a dual-purpose design, allowing for quick conversion between a grass shear and a hedge trimmer. Its lightweight and compact design, combined with Type-C USB charging, makes it convenient for various trimming tasks around your garden.

This manual provides essential information for the safe and effective use, maintenance, and troubleshooting of your WORKPRO W159025 trimmer. Please read it thoroughly before first use and keep it for future reference.

2. IMPORTANT SAFETY INSTRUCTIONS

Always follow basic safety precautions when using electrical appliances to reduce the risk of fire, electric shock, and personal injury.

- **Read All Instructions:** Familiarize yourself with the controls and proper use of the tool.
- **Wear Eye Protection:** Always wear safety glasses or goggles when operating the trimmer.
- **Keep Area Clear:** Ensure the work area is free of debris, children, and pets.
- **Avoid Accidental Starting:** Ensure the safety lock button and operating switch are not engaged unintentionally.
- **Use Correct Charger:** Only use a 5V/2A adapter for charging. Using a 5V/1A adapter may trigger overvoltage protection and prevent charging.
- **Inspect Blades:** Before each use, check blades for damage or wear. Replace if necessary.
- **Secure Blades:** Ensure blades are correctly installed and secured before operation.
- **Keep Hands Away:** Never touch the blades while the tool is operating or connected to power.
- **Store Safely:** Store the tool in a dry, secure place out of reach of children.

3. PACKAGE CONTENTS

Verify that all items are present upon unpacking:

- WORKPRO W159025 Main Unit
- Grass Shear Blade (75mm cutting width)
- Hedge Trimmer Blade (120mm cutting width, 7.8mm max cutting diameter)
- Type-C USB Cable (1m)
- User Manual

4. PRODUCT OVERVIEW

The WORKPRO W159025 features a compact and ergonomic design for comfortable use. Key components include:

- **TPR Handle:** Provides a comfortable and secure grip.
- **Safety Lock Button:** Prevents accidental activation.
- **Operating Switch:** Activates the blades.
- **Blade Release Button:** For quick and tool-free blade changes.
- **Type-C Charging Port:** For convenient charging.
- **LED Charging Indicator Light:** Displays charging status (Red: Charging, Green: Fully Charged, Yellow: Approx. 50% charged).
- **Interchangeable Blades:** Includes both grass shear and hedge trimmer blades.

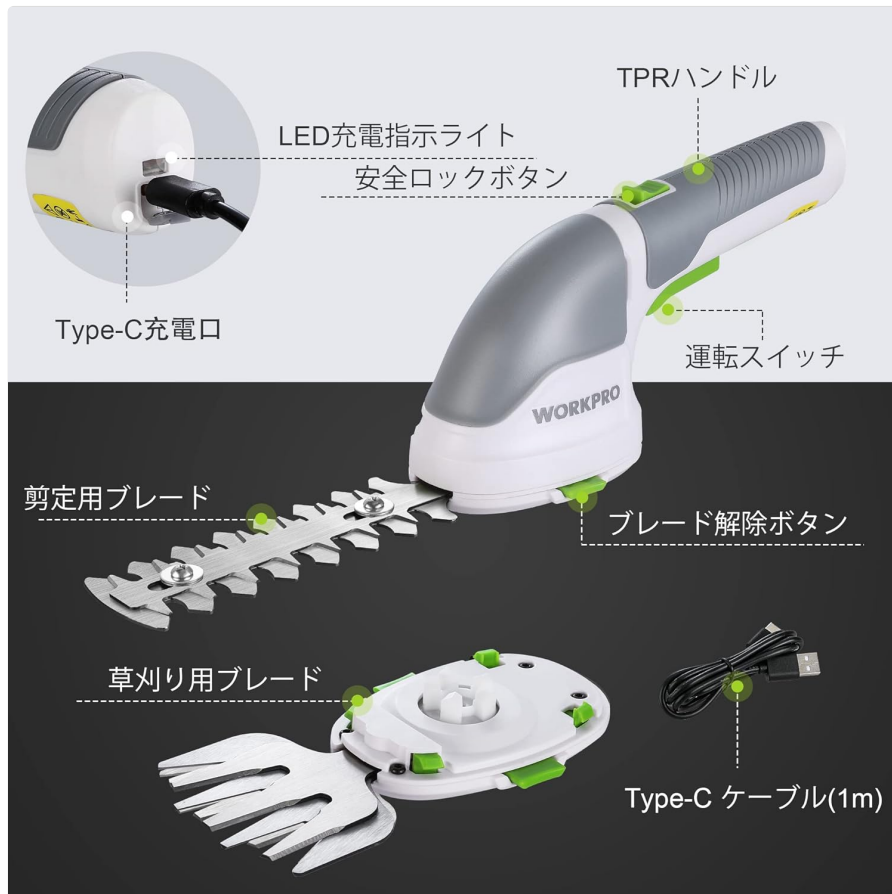


Figure 1: WORKPRO W159025 Component Diagram

5. SETUP

5.1. Charging the Battery

The device is powered by a 3.6V rechargeable battery. Before first use, fully charge the battery.

1. Locate the Type-C charging port on the device.

2. Connect the provided Type-C USB cable to the charging port.
3. Connect the other end of the USB cable to a 5V/2A USB power adapter (not included).
4. The LED indicator light will show red during charging. It will turn green when fully charged (approximately 2-3 hours). A yellow light indicates approximately 50% charge.



Figure 2: Type-C Charging

5.2. Changing Blades

The WORKPRO W159025 allows for easy, tool-free blade changes between the grass shear and hedge trimmer blades.

1. Ensure the device is turned off and disconnected from any power source.
2. Push the two blade release buttons on either side of the blade housing.
3. Carefully remove the installed blade.
4. Align the desired blade (grass shear or hedge trimmer) with the pins on the main unit.
5. Press the blade firmly into place until it clicks securely.



Figure 3: Blade Change Mechanism

6. OPERATING INSTRUCTIONS

6.1. Powering On/Off

The WORKPRO W159025 features a dual safety mechanism to prevent accidental starts.

1. To start the tool, simultaneously press the safety lock button (located on the top of the handle)

and the operating switch (trigger).

2. Once the tool starts, you can release the safety lock button, and the tool will continue to operate as long as the operating switch is pressed.
3. To turn off the tool, release the operating switch.



Figure 4: Safety Lock and Operating Switch

6.2. Using the Grass Shear

Attach the grass shear blade for trimming grass in small areas, around edges, or where larger mowers cannot reach.

- Ensure the grass shear blade is securely attached.
- Hold the tool firmly with both hands, if possible, or one hand if comfortable and safe.
- Activate the tool as described in Section 6.1.
- Move the tool steadily across the grass, maintaining a consistent height. The cutting width is 75mm.



一台二役 草刈り&剪定



Figure 5: Grass Shearing Operation

6.3. Using the Hedge Trimmer

Attach the hedge trimmer blade for shaping shrubs and hedges. The cutting width is 120mm, and the maximum cutting diameter is 7.8mm.

- Ensure the hedge trimmer blade is securely attached.
- Hold the tool firmly, ensuring a stable grip.
- Activate the tool as described in Section 6.1.
- Move the trimmer smoothly along the hedge, cutting small amounts at a time. Avoid forcing the blades through thick branches.
- The handle can rotate 180 degrees for improved ergonomics and access to different angles. To rotate the handle, press the handle rotation button (if present, otherwise manually rotate if designed for it) and adjust to the desired position.



本体わずか
370g

軽量で小さな作業に適しており
使用するときには疲れることはない

Figure 6: Hedge Trimming Operation

Video 1: Demonstrates the WORKPRO W159025 in action, showing blade changes, safety features, and use as both a grass shear and hedge trimmer. It highlights the 180-degree handle rotation feature.

7. MAINTENANCE

7.1. Cleaning and Blade Care

- Always ensure the tool is switched off and the battery is removed (if applicable) before cleaning or performing maintenance.
- Clean the blades after each use to remove sap, debris, and dirt. Use a stiff brush and a damp cloth. For stubborn residue, a blade cleaner or light oil can be used.
- Periodically apply a thin layer of machine oil to the blades to prevent rust and ensure smooth operation.
- Inspect blades for sharpness and damage. Dull or damaged blades can reduce efficiency and increase strain on the motor. Replace worn blades as needed.

7.2. Storage

- Store the tool in a dry, well-ventilated area, away from direct sunlight and extreme temperatures.
- Ensure the blades are clean, dry, and lightly oiled before storage.
- Keep the tool out of reach of children and unauthorized persons.

8. TROUBLESHOOTING

Problem	Possible Cause	Solution
---------	----------------	----------

Problem	Possible Cause	Solution
Tool does not start	Battery is low or depleted Safety lock button not pressed simultaneously with operating switch Blades are jammed	Charge the battery fully Ensure both buttons are pressed together Clear any obstructions from the blades (with tool off)
Poor cutting performance	Dull or damaged blades Excessive material being cut Blades are dirty or sticky	Replace blades Cut smaller sections at a time Clean and lubricate blades
Battery not charging	Incorrect power adapter (e.g., 5V/1A) Charging cable is damaged Charging port is dirty	Use a 5V/2A USB power adapter Try a different Type-C USB cable Clean the charging port

9. SPECIFICATIONS

Feature	Detail
Brand	WORKPRO
Model Number	W159025
Power Source	Battery Powered (3.6V)
Battery Type	Lithium-ion
Charging Port	Type-C USB
Charging Time	Approx. 2-3 hours (with 5V/2A adapter)
No-Load Operating Time	Approx. 40 minutes
No-Load Stroke Rate	1100 strokes/minute
Grass Shear Cutting Width	75mm
Hedge Trimmer Cutting Width	120mm
Max Cutting Diameter (Hedge Trimmer)	7.8mm
Blade Material	Stainless Steel
Product Weight (without blade)	0.37 kg
UPC	820909687412

10. WARRANTY AND SUPPORT

For warranty information, technical support, or replacement parts, please contact WORKPRO customer service or refer to the official WORKPRO website. Keep your purchase receipt as proof of purchase.

For further assistance, you may visit the [WORKPRO Store on Amazon](#).