

## Yansoo RM

# Yansoo 3-Channel Dash Cam User Manual

Model: RM

## 1. INTRODUCTION AND OVERVIEW

This manual provides detailed instructions for the installation, operation, and maintenance of your Yansoo 3-Channel Dash Cam. Please read this manual thoroughly before using the device to ensure proper functionality and safety.

### Product Features:

- **3-Channel Recording:** Simultaneously captures video from the front (170° wide-angle), rear (165°), and inside (140°) of your vehicle.
- **High Definition Video:** Supports 1080P Front video + AHD-720P Rear video + AHD-720P Inside video.
- **Enhanced Night Vision:** Features 4 unique infrared LED fill lights, F1.8 aperture, and WDR technology for optimal performance in low light.
- **Emergency Lock (G-Sensor):** Automatically detects sudden shocks or collisions and locks the current video footage to prevent overwriting.
- **Loop Recording:** Continuously records and automatically overwrites the oldest unlocked video files when the memory card is full.
- **Parking Monitor:** Activates recording when motion or shocking is detected while parked (requires separate hardwire kit for 24/7 monitoring).
- **Adjustable Interior Camera:** The interior lens can be rotated 60° for flexible positioning.

### Package Contents:

- Yansoo 3-Channel Dash Cam Unit
- Rear Camera with Cable
- Suction Cup Mount
- Car Charger (Type-C)
- USB Data Cable
- User Manual

- Mounting Hardware for Rear Camera



Image: The Yansoo 3-Channel Dash Cam unit with its suction cup mount and the separate rear camera, illustrating the complete package.

## 2. SETUP

### 2.1 Inserting the Memory Card

The dash cam supports Micro Memory cards up to 64GB (Class 10 or above recommended, not included). Please format the card in the camera menu before first use.

1. Locate the memory card slot on the side of the dash cam.
2. Insert the Micro Memory card into the slot until it clicks into place.
3. To remove, gently push the card until it pops out.



Image: A four-panel illustration showing the steps to insert a Micro SD card into the dash cam's slot.

## 2.2 Mounting the Dash Cam

Mount the main dash cam unit to your windshield using the provided suction cup mount. Choose a location that does not obstruct your view while driving.

1. Clean the chosen area on your windshield thoroughly.
2. Attach the suction cup mount to the dash cam unit.
3. Press the suction cup firmly against the windshield and flip the lever to secure it.
4. Adjust the camera angle to ensure a clear view of the road ahead.

**1080P Front**



**720P Inside**



**720P Rear**



**3**

**CHANNEL RECORDING**

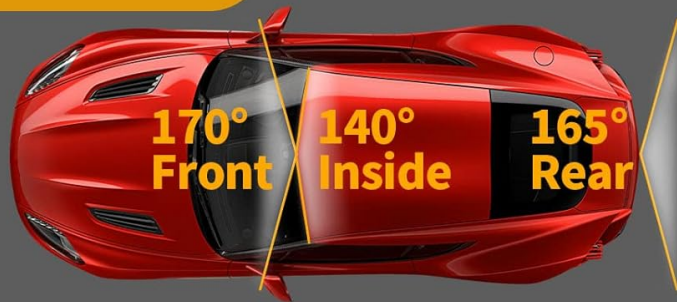


Image: The Yansoo 3-Channel Dash Cam mounted on a car's windshield, showing its position relative to the driver's view.

## 2.3 Installing the Rear Camera

The rear camera provides a view of the vehicle's rear. It can be installed inside the rear window or externally above the license plate.

1. Connect the rear camera cable to the main dash cam unit.
2. Route the cable neatly along the vehicle's interior trim to the rear.
3. Mount the rear camera in the desired location, ensuring a clear view.



Image: A diagram illustrating the recommended cable routing path for the dash cam and rear camera within a car's interior.

## 2.4 Power Connection

Connect the dash cam to your vehicle's cigarette lighter socket using the provided car charger. The camera will automatically power on and begin recording when the vehicle starts.



# Super Night vision

Large aperture F2.0 and WDR, able to balance the bright in any light condition night or day.

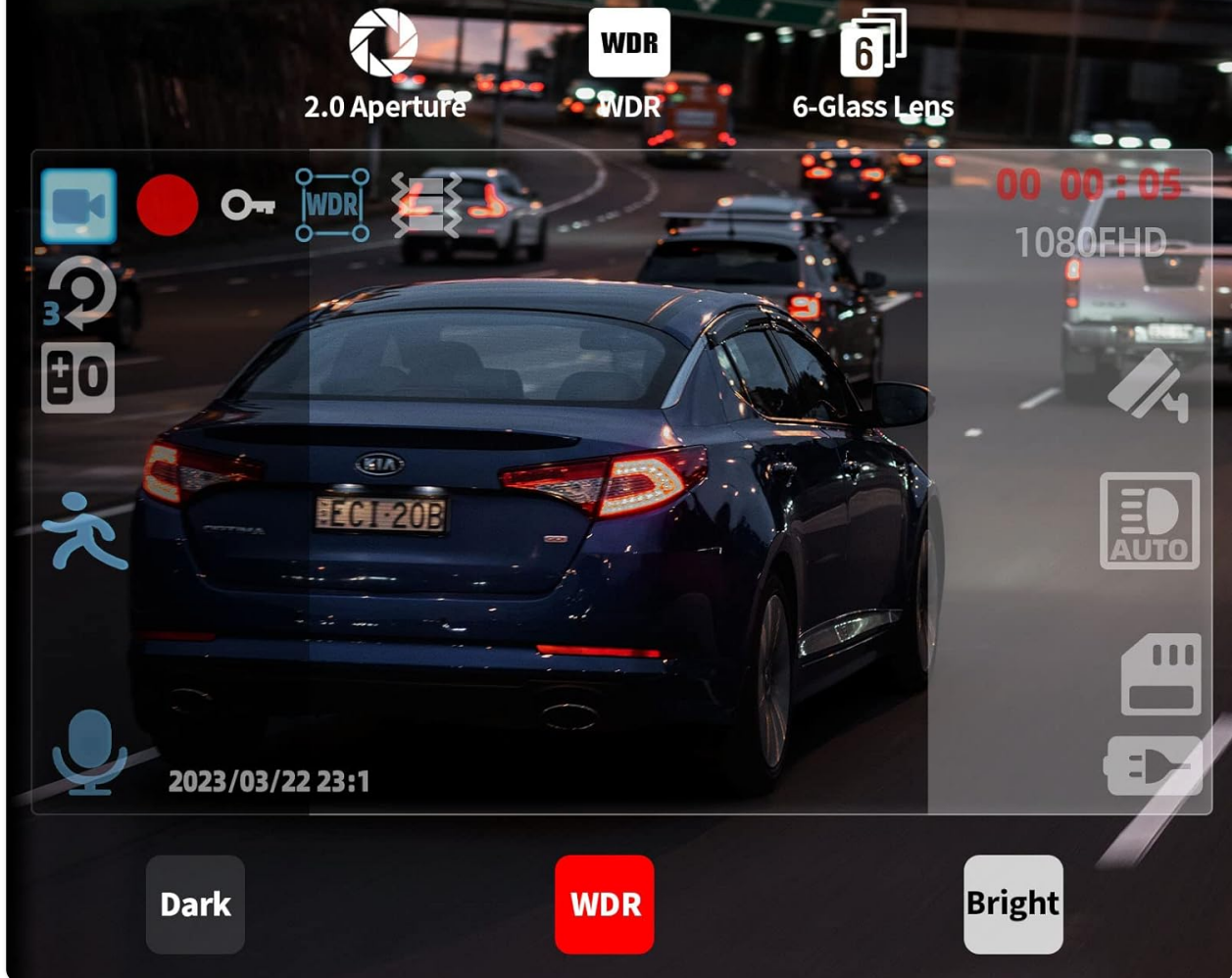


Image: The Yansoo 3-Channel Dash Cam connected to a power source, indicating its readiness for operation.

## 3. OPERATING INSTRUCTIONS

### 3.1 Basic Operation

- **Power On/Off:** The camera powers on/off automatically with your vehicle's ignition. You can also manually power on/off by pressing and holding the power button.
- **Start/Stop Recording:** Recording starts automatically when the camera powers on. Press the "OK" button to manually stop or start recording.
- **Switch Display Views:** Press the "Up" button to cycle through different display modes (Front, Inside, Rear, Picture-in-Picture combinations).

Your browser does not support the video tag.

Video: Demonstration of the Yansoo X88 Dash Cam's recording capabilities, showcasing its ability to capture clear video footage.

Your browser does not support the video tag.

Video: Footage from the Yansoo X88 Dash Cam demonstrating its clear day and night recording capabilities.

Your browser does not support the video tag.

Video: A demonstration of the Yansoo X88 Dash Cam's 1080P Full HD recording quality.

## 3.2 Menu Settings

To access the menu settings, stop recording (if active) by pressing the "OK" button, then press the "M" button twice.

- **Resolution:** Adjust video resolution for front, inside, and rear cameras.
- **Loop Recording:** Set the duration of video segments (e.g., 1, 3, 5 minutes).
- **G-Sensor Sensitivity:** Adjust the sensitivity of the emergency lock feature.
- **Parking Monitor:** Enable or disable the parking monitoring function.
- **Date/Time:** Set the correct date and time for accurate timestamps on recordings.
- **Language:** Select your preferred language for the menu.

Your browser does not support the video tag.

Video: A step-by-step guide on how to set the date and time on the Yansoo Dash Cam.

## 4. MAINTENANCE

- **Regular Formatting:** Format the memory card regularly (e.g., once a month) to prevent data corruption and ensure optimal recording performance.
- **Lens Cleaning:** Keep the camera lenses clean using a soft, lint-free cloth. Avoid abrasive materials that could scratch the lens.
- **Firmware Updates:** Check the official Yansoo website for any available firmware updates to improve performance and add new features.
- **Temperature Considerations:** Avoid exposing the dash cam to extreme temperatures for prolonged periods.

## 5. TROUBLESHOOTING

Problem	Possible Cause	Solution
Camera not powering on.	No power from cigarette lighter; loose connection.	Check car charger connection; ensure vehicle ignition is on.
Recording stops unexpectedly.	Memory card full or corrupted; G-Sensor triggered.	Format memory card; adjust G-Sensor sensitivity.

Problem	Possible Cause	Solution
Video footage is blurry.	Protective film on lens; dirty lens.	Remove protective film; clean lenses with a soft cloth.
Date/Time is incorrect.	Date/Time not set or battery low.	Set Date/Time in menu; ensure continuous power supply.
Camera freezes or malfunctions.	Software glitch.	Use a needle to press the "RE" (Reset) button.

## 6. SPECIFICATIONS

Feature	Detail
Product Dimensions	4.13 x 1.57 x 1.77 inches
Item Weight	1.23 pounds
Video Capture Resolution	1080p (Front), 720p (Inside & Rear)
Field Of View	170° (Front), 140° (Inside), 165° (Rear)
Connectivity Technology	USB
Special Feature	G-Sensor, Loop Recording, Parking Monitor, Night Vision
Mounting Type	Suction Mount
Manufacturer	Yansoo




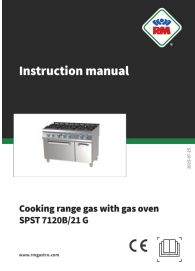

## 7. WARRANTY AND SUPPORT

Yansoo offers comprehensive after-sales support for your dash cam.

- **Warranty:** 1-YEAR warranty from the date of purchase.
- **Technical Service:** 7\*24 hours technical service is available.
- **Contact:** For any questions or issues, please contact our customer service team via Amazon or the after-sales email provided in the original product packaging.
- **User Manual (PDF):** A digital version of the user manual is available for download [here](#).



Related Documents - RM

	<p><a href="#">RM SPST 7120B/21 G Sporák s plynovou troubou - Návod k použití</a></p> <p>Podrobný návod k použití pro plynový sporák s plynovou troubou RM SPST 7120B/21 G, pokrývající instalaci, provoz, bezpečnost a údržbu. Určeno pro profesionální kuchyně.</p>
	<p><a href="#">RM SPS 7120A G Gas Range Instruction Manual</a></p> <p>Comprehensive instruction manual for the RM SPS 7120A G gas range, covering installation, operation, safety, and maintenance for professional kitchen use.</p>
	<p><a href="#">RM FTHC 704 G Fry-Top Griddle Plate Instruction Manual</a></p> <p>Comprehensive instruction manual for the RM FTHC 704 G smooth chromed fry-top griddle plate, covering installation, operation, safety, and maintenance for professional use.</p>
	<p><a href="#">RM SPST 7120B/21 G Gas Cooking Range with Gas Oven - Instruction Manual</a></p> <p>This document provides comprehensive instructions for the RM SPST 7120B/21 G gas cooking range with gas oven. It covers technical specifications, installation guidelines, operation, controls, safety measures, and maintenance procedures for professional use.</p>
	<p><a href="#">RM Gas Range SPS 7012 G Instruction Manual</a></p> <p>Comprehensive instruction manual for the RM Gas Range SPS 7012 G, covering installation, operation, safety, and maintenance. Includes technical data, gas compatibility tables, and usage guidelines for professional kitchens.</p>



### [Manuel d'instructions du Fourneau à Gaz RM SPS 740 G](#)

Manuel d'instructions complet pour le fourneau à gaz professionnel RM SPS 740 G. Inclut les spécifications techniques, les instructions d'installation, d'utilisation, de sécurité et de maintenance.