

Samsung QN75QN90CAFXZA

Samsung 75-Inch Class Neo QLED 4K QN90C Series Smart TV User Manual

Model: QN75QN90CAFXZA

1. INTRODUCTION

This manual provides essential information for the safe and efficient use of your Samsung 75-Inch Class Neo QLED 4K QN90C Series Smart TV. Please read these instructions thoroughly before operating the device and retain them for future reference.

2. SAFETY INFORMATION

Always observe the following safety precautions to prevent electric shock, fire, or damage to the product.

- Do not expose the TV to rain or moisture.
- Do not block ventilation openings.
- Ensure proper grounding for the power cord.
- Keep the TV away from heat sources and direct sunlight.
- Use only specified attachments/accessories.
- Unplug the TV during lightning storms or when unused for long periods.

3. WHAT'S IN THE BOX

Verify that all components are present:

- Samsung 75-Inch Class Neo QLED 4K QN90C Series Smart TV
- User Manual (this document)
- E-Manual (digital version)
- Power Cable
- Remote Control (not explicitly listed but standard)

4. SETUP

4.1 Unpacking and Placement

Carefully remove the TV from its packaging. It is recommended that two people handle the TV due to its size and weight. Place the TV on a stable, flat surface or mount it securely to a wall using a compatible VESA mount (sold separately).

4.2 Stand Installation

If using the included stand, follow the instructions provided in the separate stand assembly guide. Ensure all screws are tightened securely.

4.3 Connecting Peripherals

Connect your external devices to the TV's ports. Refer to the image below for port locations.



Image: Rear view of the Samsung QN90C TV displaying its input/output ports. These include multiple HDMI ports (one with eARC support), USB ports, a LAN port for wired internet, and an antenna input.

- **HDMI:** Connect Blu-ray players, game consoles, and other HDMI-enabled devices. One port supports eARC for enhanced audio return.

- **USB:** Connect USB storage devices for media playback or software updates.
- **LAN:** For a wired internet connection.
- **Antenna:** Connect an antenna for over-the-air broadcasts.
- **Wi-Fi & Bluetooth:** The TV supports wireless connectivity for internet and compatible devices.

4.4 Initial Power On and Setup Wizard

Plug the power cable into the TV and a wall outlet. Press the power button on the remote control. The TV will guide you through the initial setup process, including network connection, channel scanning, and smart features configuration.

5. OPERATING THE TV

5.1 Basic Functions

Use the remote control to power on/off, adjust volume, change channels, and select input sources. The remote is designed for simplicity and ease of use.

5.2 Picture Settings

Your Neo QLED TV features advanced picture technologies for an optimal viewing experience.

- **Quantum Matrix with Mini LEDs:** Provides precise light control for enhanced contrast and color.
- **Neo Quantum HDR+:** Delivers sensational contrast, brightness, and vivid colors, supporting High Dynamic Range content.
- **Anti-Glare with Ultra Viewing Angle:** Reduces reflections and maintains consistent picture quality from various viewing positions.

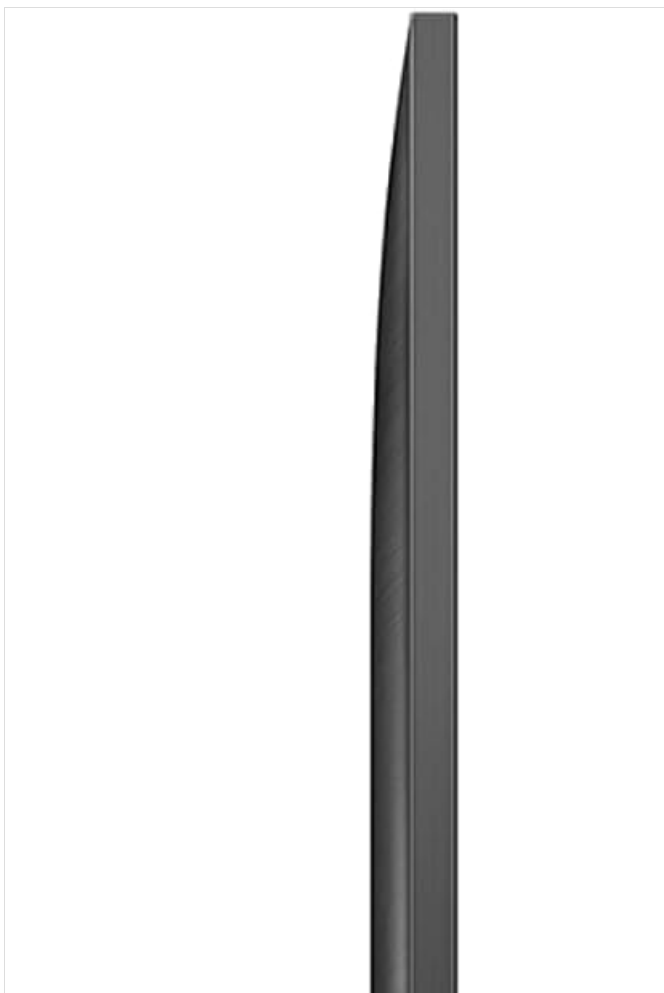




Image: A visual comparison demonstrating the effectiveness of the Anti-Glare screen. The left panel shows a conventional screen with significant reflections, while the right panel shows the same scene on an Anti-Reflection screen with minimal glare, improving visibility.

Access picture modes and advanced settings through the TV's menu to customize brightness, contrast, sharpness, and color to your preference.

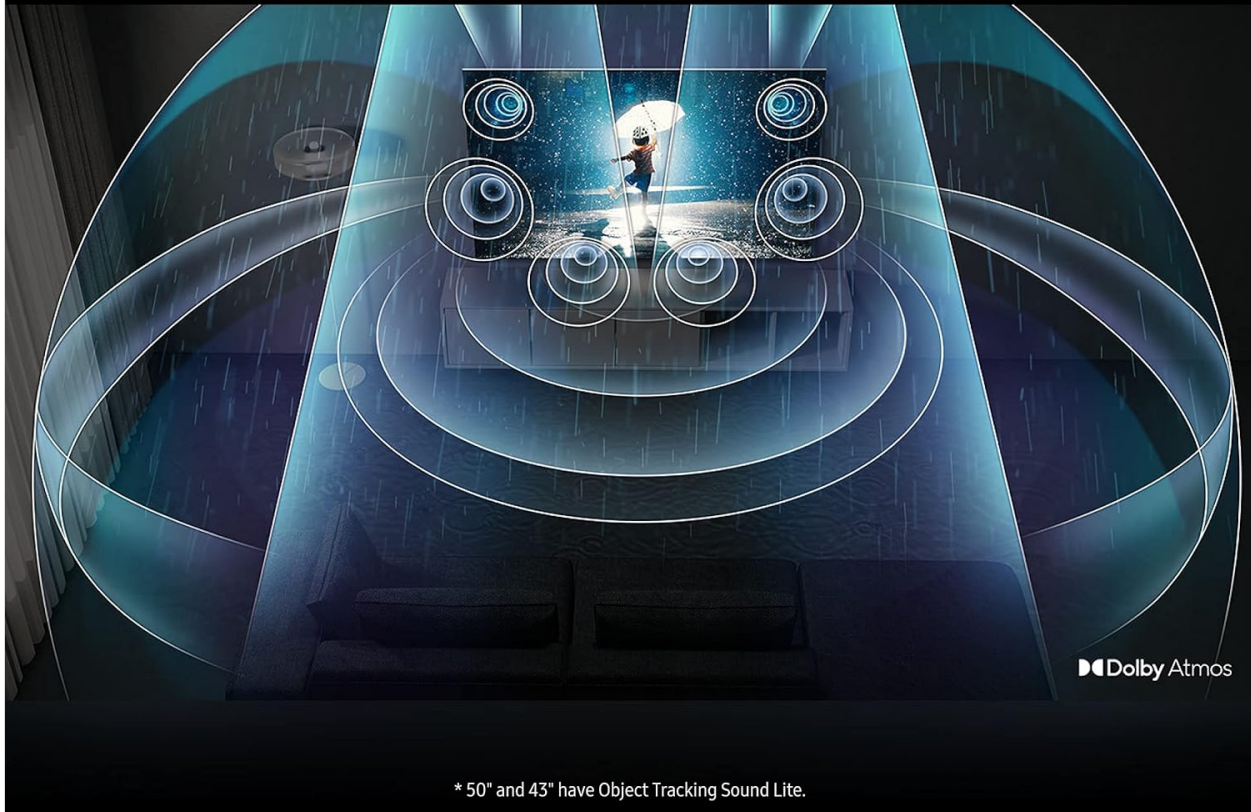
5.3 Sound Settings

The TV offers immersive audio capabilities:

- **Dolby Atmos & Object Tracking Sound+:** Creates a dynamic, three-dimensional sound experience where audio tracks the on-screen action.
- **Q-Symphony 3.0:** When paired with compatible Samsung Q-Series and S-Series soundbars, the TV speakers and soundbar operate together for a synchronized audio output.

Don't just listen. Get lost in sound.

Hear the spinning whirr of helicopter blades and streams of sirens speeding by with Dolby Atmos® and Object Tracking Sound+. You'll feel like you're right in the middle of the action as AI Sound tracks the action on screen and sound is projected to follow the movement with pinpoint accuracy.*



* 50" and 43" have Object Tracking Sound Lite.

Image: A graphical representation of Dolby Atmos and Object Tracking Sound+ in action. Sound waves are depicted originating from the television and moving around the room, indicating a multi-directional and immersive audio experience that follows on-screen objects.

Adjust sound modes (e.g., Standard, Adaptive Sound) and equalizer settings via the TV menu.

5.4 Smart TV Features

- **Gaming Hub:** Provides a centralized platform for accessing console games, streaming games, and related accessories. Features include game recommendations and settings adjustments.
- **Alexa Built-in:** Use voice commands to control your TV, search for content, and manage smart home devices.
- **Supported Internet Services:** Access popular streaming applications such as Amazon Instant Video, Hulu, and Netflix directly from the TV.



Image: A Samsung Neo QLED TV showcasing a vibrant video game scene, positioned on a gaming desk with a gaming chair and ambient lighting, highlighting its suitability for gaming.

5.5 Motion Xcelerator Turbo+

This feature ensures smooth performance during fast-paced action scenes and gaming, supporting 4K visuals at up to 120Hz to minimize lag and motion blur.

6. MAINTENANCE

6.1 Cleaning the TV

Always unplug the TV before cleaning. Use a soft, dry microfiber cloth to wipe the screen and cabinet. Do not use liquid cleaners, aerosols, or abrasive materials, as they can damage the TV's surface.

6.2 Software Updates

Periodically check for and install software updates to ensure optimal performance and access to the latest features. Updates can typically be found in the TV's settings menu under 'Support' or 'Software Update'.

7. TROUBLESHOOTING

If you encounter issues with your TV, refer to the following common solutions:

- **No Power:** Ensure the power cable is securely connected to both the TV and a working electrical outlet. Test the outlet with another device.
- **No Picture/Sound:** Verify the correct input source is selected. Check all cable connections (HDMI, antenna). Restart connected devices.
- **Remote Control Not Working:** Check the remote's battery level. Ensure there are no obstructions between the remote and the TV's sensor.
- **Poor Picture Quality:** Adjust picture settings (brightness, contrast, sharpness). Ensure the input source is providing a high-quality signal.
- **Smart Features Not Working:** Check your internet connection (wired or Wi-Fi). Restart the TV and your router.

For more detailed troubleshooting, consult the E-Manual accessible through your TV's settings or the Samsung support website.

8. SPECIFICATIONS

Detailed technical specifications for the Samsung QN75QN90CAFXZA TV:

Brand	Samsung
Model Number	QN75QN90CAFXZA (CRT2SAMQN75QN90CA)
Screen Size	75 Inches
Display Technology	Neo QLED
Resolution	4K (3840 x 2160)
Refresh Rate	120 Hz
Connectivity	Bluetooth, Ethernet, HDMI, USB, Wi-Fi
Audio Output Wattage	60 Watts
Power Consumption (Wattage)	270 Watts
Item Weight	134 pounds
Product Dimensions (L x W x H)	11.9 x 65.7 x 40 inches
Color	Titan Black

For energy consumption details, refer to the Energy Guide label:

Federal law prohibits removal of this label before consumer purchase.

ENERGY GUIDE

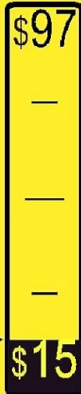
Television

SAMSUNG Electronics
QN75QN90CAF

Estimated Yearly Energy Cost

\$22

Cost Range of
Similar Models
(69.5" or greater)



- Based on 12 cents per kWh and 5 hours use per day
- Estimated yearly electricity use of this model: 184 kWh
- **Your cost depends on your utility rates and use.**

Visit ftc.gov/energy

Image: The Energy Guide label for the Samsung QN75QN90CAF television, indicating an estimated yearly energy cost of \$22 based on 12 cents per kWh and 5 hours of use per day. The estimated yearly electricity use is 184 kWh.

9. WARRANTY AND SUPPORT

Your Samsung TV is covered by a manufacturer's warranty. For specific warranty terms and conditions, please refer to the warranty card included with your product or visit the official Samsung support website. For technical assistance, troubleshooting, or service requests, contact Samsung Customer Support.