

FITCAMX HD2-Gi000

FITCAMX 4K Dash Cam Instruction Manual for Hyundai IONIQ 5 (2022-2024)

Model: HD2-Gi000

INTRODUCTION

This manual provides detailed instructions for the installation, operation, and maintenance of your FITCAMX 4K Dash Cam, designed specifically for Hyundai IONIQ 5 models from 2022 to 2024. Please read this manual thoroughly before using the product to ensure proper functionality and safety.

PRODUCT OVERVIEW

The FITCAMX 4K Dash Cam offers an OEM-style integration for your Hyundai IONIQ 5, providing high-resolution video recording without visible wires or obstructed views. Key features include:

- **OEM Style Integration:** Designed to blend seamlessly with your vehicle's interior, appearing as a factory-installed component.
- **Ultra Clear 2160P Video:** Records UHD video at 2160P/30fps with a CMOS Sensor and f/1.6 aperture lens for clear footage, even at night.
- **Easy Installation & WiFi Connectivity:** Simple installation process with built-in WiFi and a dedicated FITCAMX app for real-time viewing and footage download.
- **Loop Recording:** Automatically overwrites older footage when the storage is full, ensuring continuous recording. Includes a 64GB MicroSD card, supporting up to 256GB.
- **G-Sensor:** Detects sudden collisions and automatically saves the video to a protected folder to prevent overwriting.

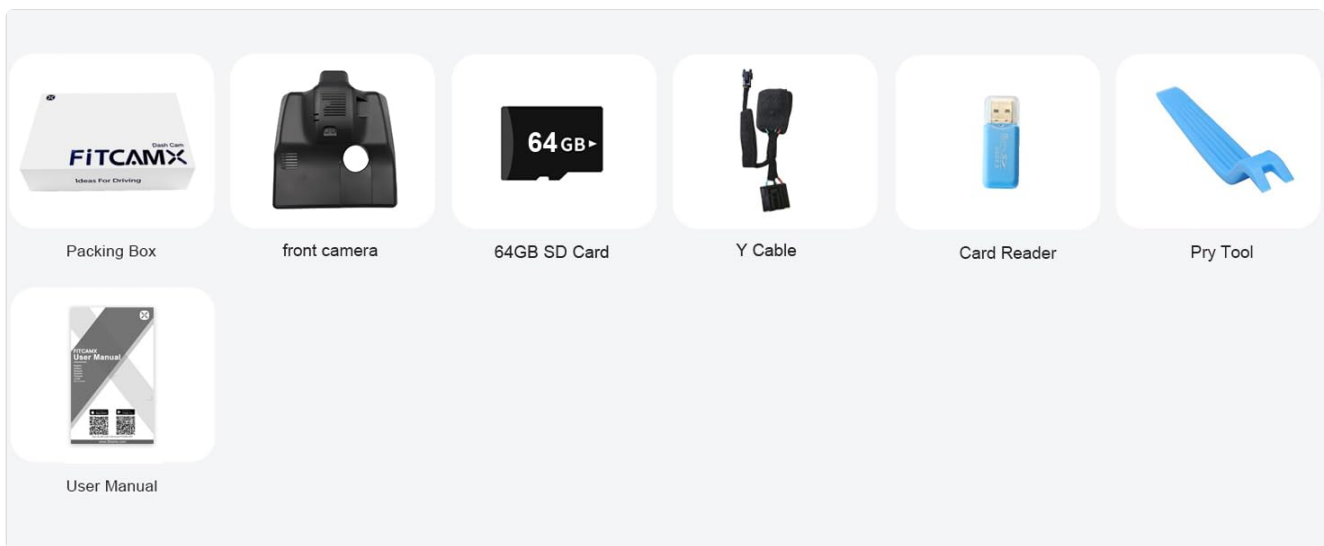


Image: Overview of FITCAMX Dash Cam key features.

VEHICLE COMPATIBILITY

This FITCAMX dash camera is suitable for Hyundai IONIQ 5 models manufactured between 2022 and 2024, specifically those with **6 VENTS** on the original cover (models HD2-Gi000 & HD2-Ni000). It is **NOT** compatible with 2025 models or vehicles with 7 vents.



Image: Visual guide for identifying compatible Hyundai IONIQ 5 models based on vent count.

PACKAGE CONTENTS

Verify that all items listed below are included in your package:

- FITCAMX Dash Cam (Front Camera)
- 64GB MicroSD Card
- Y-Cable for power connection
- Card Reader
- Pry Tool

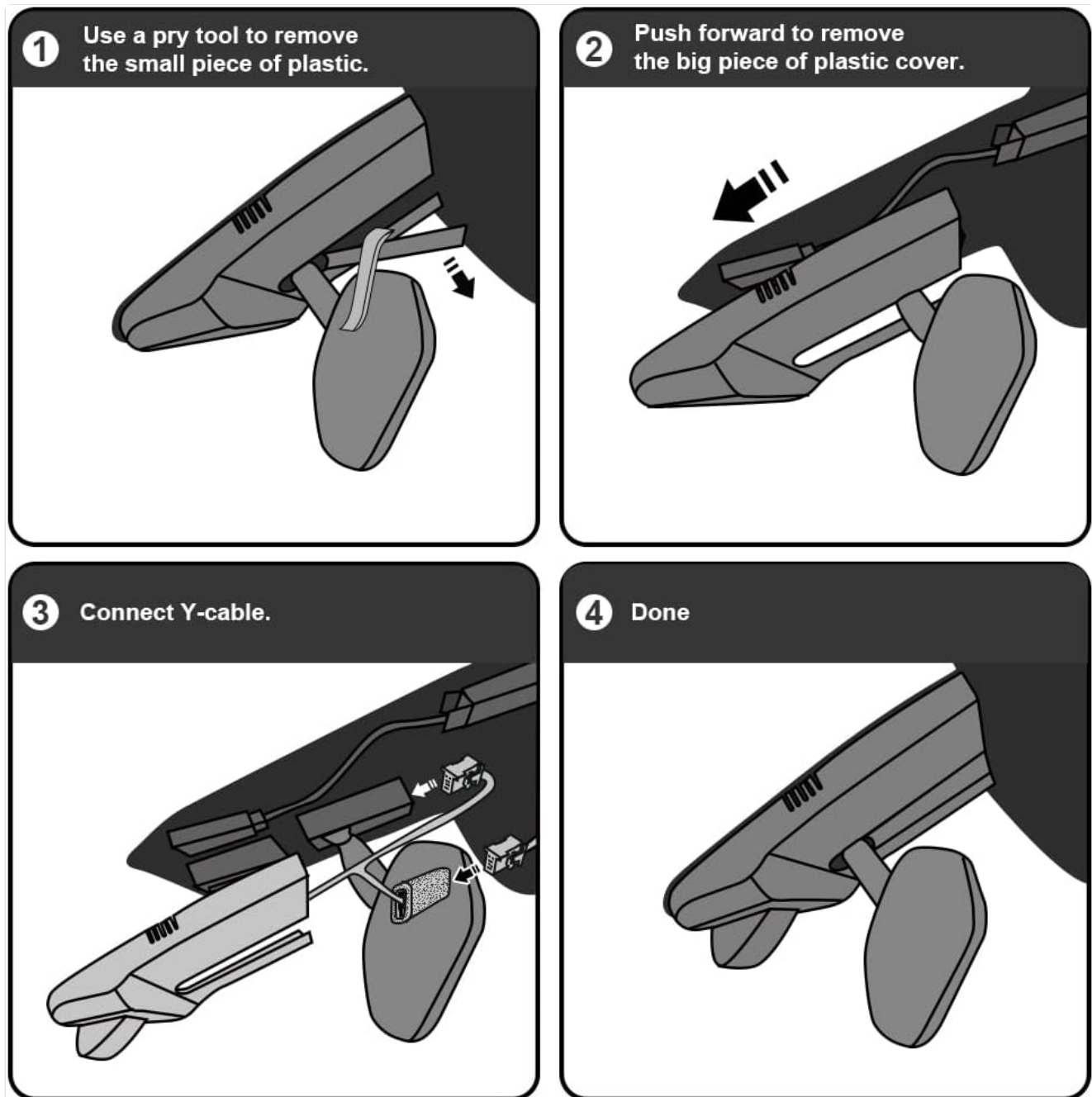


Image: Contents of the FITCAMX Dash Cam package.

INSTALLATION GUIDE

Follow these steps to install your FITCAMX Dash Cam. Ensure the vehicle is turned off before beginning installation.

Step 1: Remove the Original Cover

Carefully use the provided pry tool to detach the small plastic piece of the original rearview mirror cover. Then, push the larger plastic cover forward to remove it, exposing the wiring.

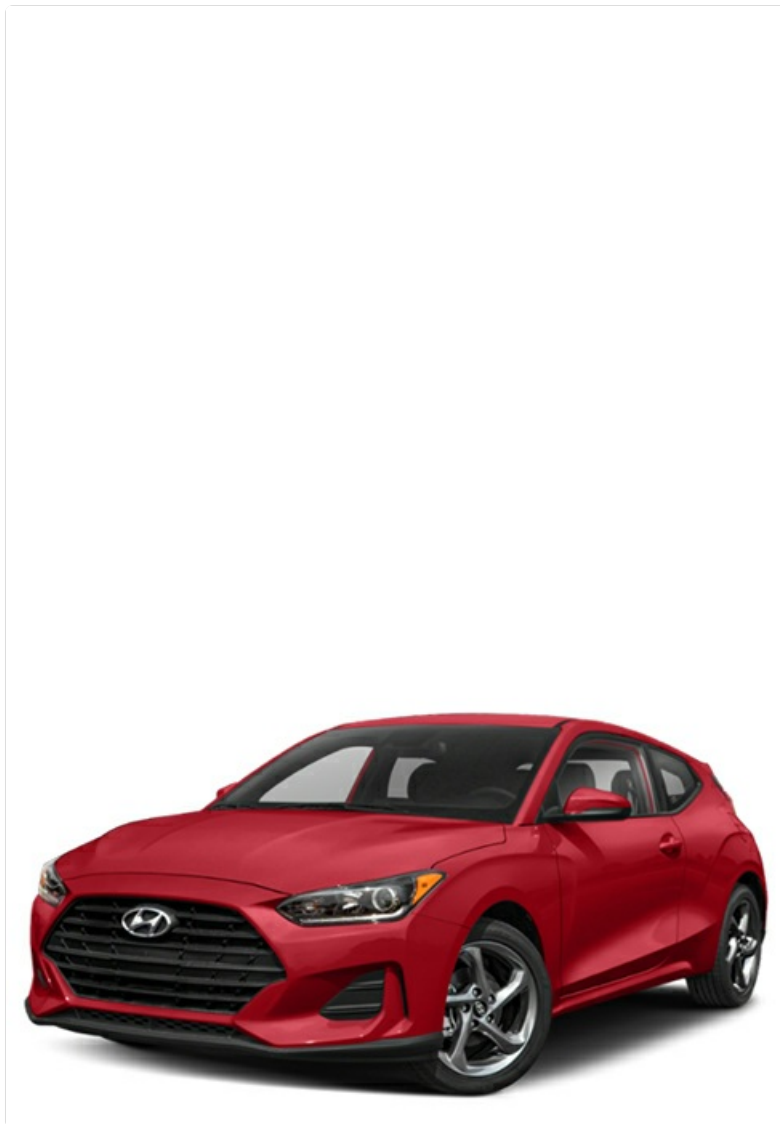


Image: Removing the small plastic cover with a pry tool.



Image: Removing the main plastic cover by pushing it forward.

Step 2: Connect the Y-Cable

Locate the power connector for the rearview mirror. Unplug the original rearview mirror plug. Connect the provided Y-cable to both the vehicle's wiring harness and the rearview mirror plug. Ensure a secure connection.

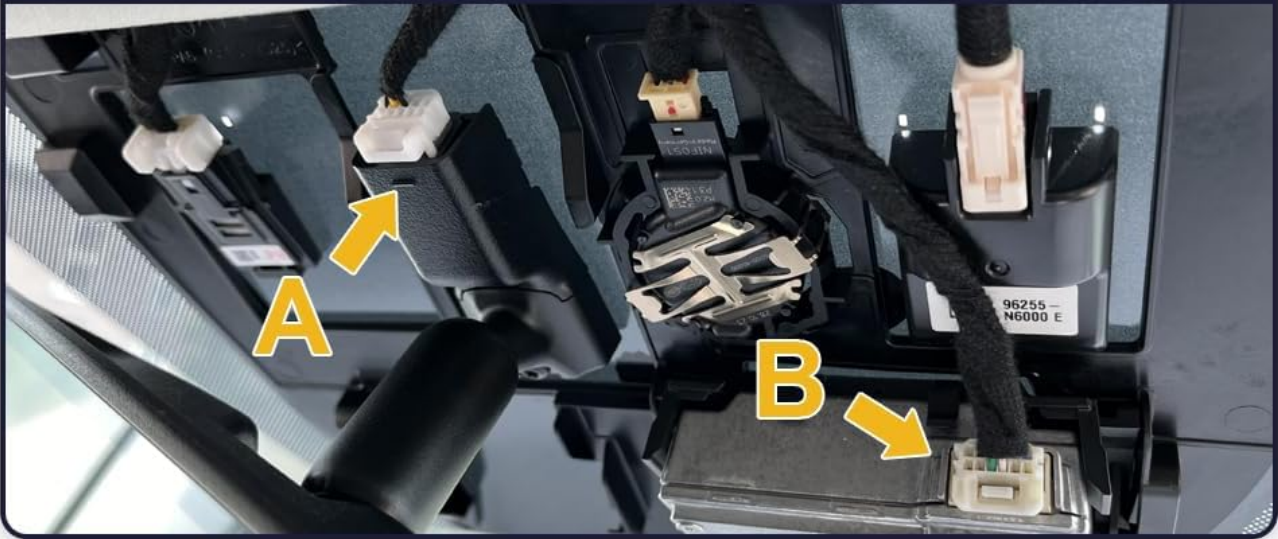


Image: Connecting the Y-cable for power supply.

Important: Check the connector type. If the 'A' connector (in the middle of the rearview mirror) is 10-pin, use a 10-pin cable. If 'A' is not 10-pin, find the 'B' connector on the right and use a 12-pin cable. This product is for the 10-pin auto-dimming rearview mirror (not digital).

Step 1

Check if the A connector is 10-pin
(in the middle of the rearview mirror)



Step 2

If the A connector is 10-pin,
please use a 10-pin cable to
connect



10-pin

Standard auto-dimming
rearview mirror (not digital)

Step 3

If the A connector is not 10-pin, please
find the B connector on the right and
use a 12-pin cable to connect



12-pin

Lane keeping Assist

Image: Connector identification for proper Y-cable selection.

Step 3: Mount the Dash Cam and Organize Cables

Carefully push the dash cam unit back into place, ensuring the two clips at the back are fixed first. Then, push up to secure the two front clips. Organize any excess cable and plugs neatly within the housing to avoid interference.



Image: Securing the dash cam unit into the rearview mirror housing.

Installation Video

Your browser does not support the video tag.

Video: Detailed installation guide for FITCAMX Dash Cam in Hyundai/Kia vehicles.

OPERATION

Automatic Recording

The FITCAMX Dash Cam will automatically begin recording when your vehicle's ignition is turned on. No manual intervention is required for basic recording functionality.

Connecting via WiFi and App

To access live footage, review recorded videos, or adjust settings, download the official FITCAMX app from the App Store (iOS) or Google Play Store (Android). Connect your smartphone to the dash cam's built-in WiFi network. The WiFi password is typically found in the user manual or on the device itself.

1. Download the **FITCAMX App** from your smartphone's app store.
2. Turn on your vehicle's ignition to power the dash cam.
3. On your smartphone, go to WiFi settings and connect to the FITCAMX dash cam's WiFi network (e.g.,

"FITCAMX_XXXX").

4. Open the FITCAMX app. You should now be able to view live footage and access recorded files.
5. **Note:** If you experience issues with live preview, temporarily turn off cellular data or Bluetooth on your phone. This does not affect CarPlay/Bluetooth functionality when not connected to the dash cam's WiFi.



Image: FITCAMX App interface displaying live video feed.

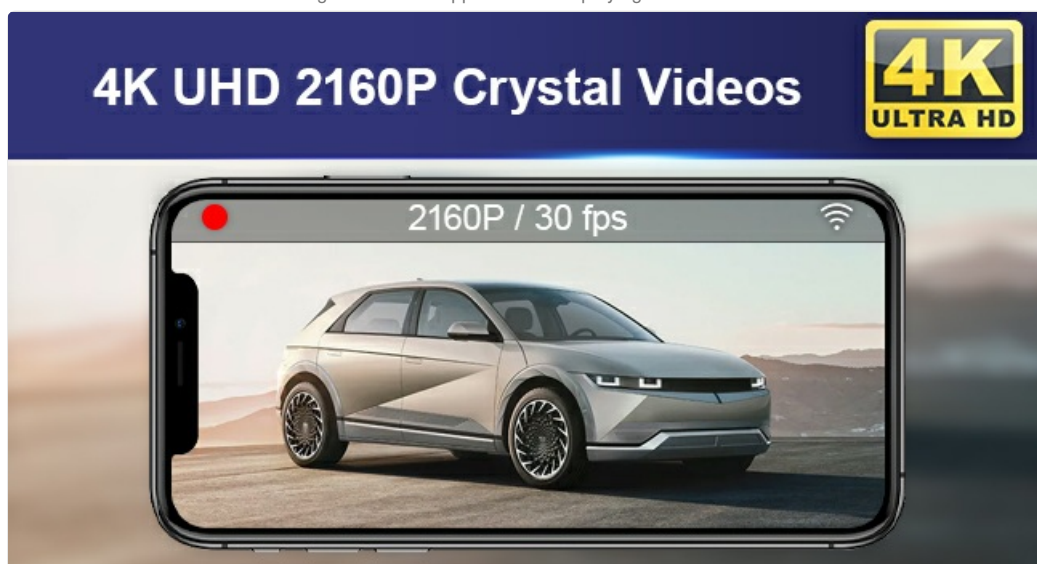


Image: FITCAMX App showing connection status and video controls.

KEY FEATURES EXPLAINED

Loop Recording

The dash cam continuously records video in short segments (e.g., 1, 3, or 5 minutes). When the MicroSD card storage is full, the oldest unlocked video files are automatically overwritten by new recordings. This ensures that recording never stops due to a full memory card. You can adjust the segment length in the FITCAMX app settings.

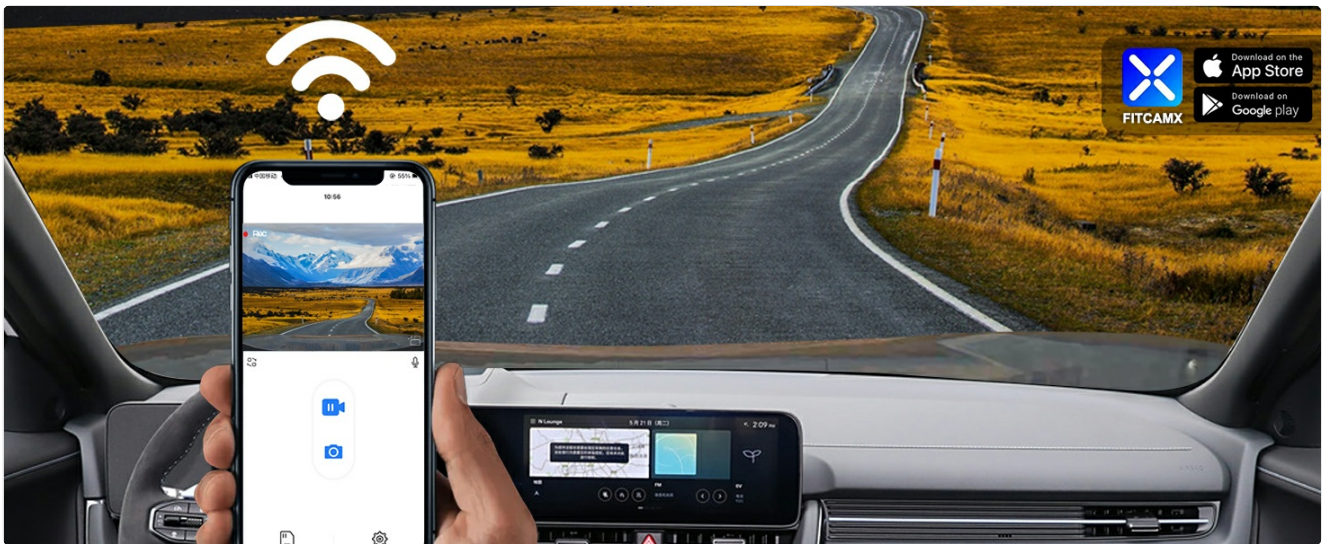


Image: Explanation of loop recording functionality.

G-Sensor (Emergency Recording)

The built-in G-Sensor detects sudden impacts or rapid deceleration/acceleration. In the event of a collision, the G-Sensor automatically locks the current video segment, preventing it from being overwritten by loop recording. These emergency files are stored in a separate, protected folder on the MicroSD card.

Automatically Loop Recording

The oldest videos will be overwritten when card storage is full.

Set it at FITCAMX APP: 1/3/5 min option

● Recording time for different SD card storage.

Storage	Recording Time
64G	5H
128G	10H

Image: G-Sensor automatically locks video during impacts.

Night Vision (WDR Technology)

Equipped with Wide Dynamic Range (WDR) technology and an f/1.6 large aperture lens, the dash cam enhances image clarity and color accuracy in low-light conditions. This ensures that details like license plates and road signs remain visible even when driving at night.

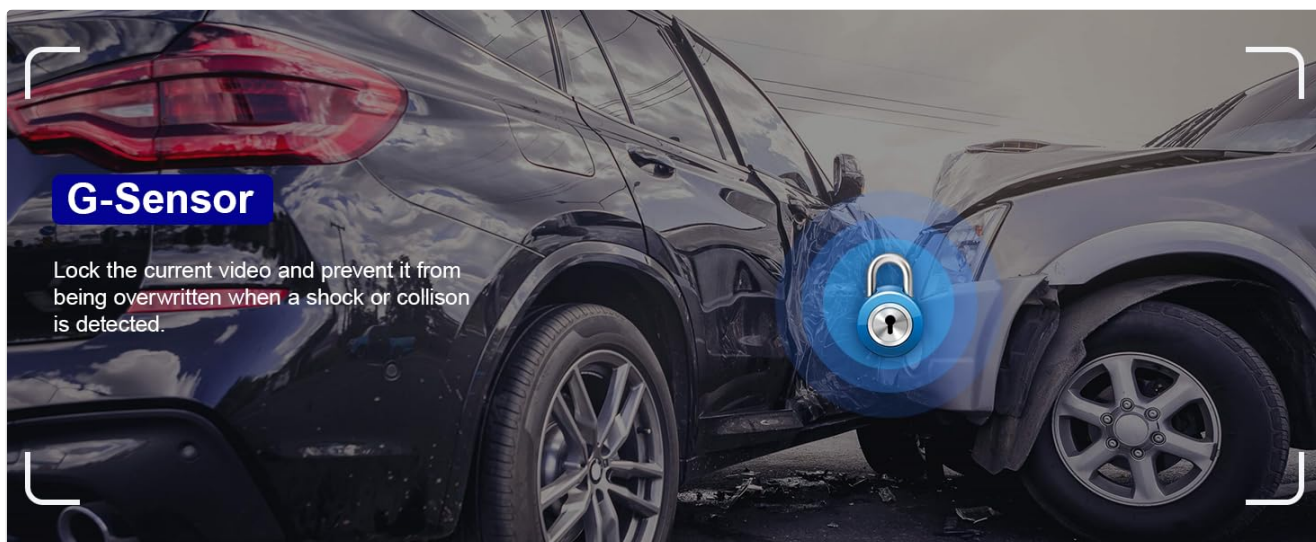


Image: Clear video capture in low-light conditions.

TROUBLESHOOTING

If you encounter any issues with your FITCAMX Dash Cam, refer to the following common problems and solutions:

- **Q: The camera does not power on.**
A: Ensure the Y-cable is correctly connected to the rearview mirror's power source. Check if the vehicle's ignition is on.
- **Q: Cannot connect to the dash cam's WiFi or live preview is not working.**
A: Make sure you have downloaded the official FITCAMX app. Try turning off your phone's cellular data and Bluetooth temporarily before connecting to the dash cam's WiFi. Ensure you are within range of the dash cam.
- **Q: The MicroSD card is full, and new videos are not recording.**
A: The dash cam features loop recording, which automatically overwrites the oldest unlocked files. If the card is full and not overwriting, ensure the G-Sensor has not locked too many files. Format the MicroSD card periodically (back up important files first).
- **Q: Video quality is poor or blurry.**
A: Ensure the camera lens is clean and free from dirt or smudges. Check that the camera is securely mounted and not vibrating. Verify that the video resolution setting in the app is set to 2160P.
- **Q: CarPlay/Bluetooth is affected when connected to the dash cam WiFi.**
A: Your phone cannot be connected to CarPlay/Bluetooth and the dash cam WiFi simultaneously for data transfer. The camera records automatically, so you do not need to keep WiFi connected constantly. Disconnect from the dash cam WiFi when not actively reviewing footage.

For further assistance, please contact FITCAMX technical support.

SPECIFICATIONS

Model Name	Fitcamx 4K Dash Cam
Item Model Number	HD2-Gi000

Video Capture Resolution	2160p (4K UHD)
Field Of View	170 Degrees
Special Features	FITCAMX APP, OEM Style, Loop Recording, G-Sensor
Connectivity Technology	Powerline, Wireless (WiFi)
Item Weight	2 pounds
Product Dimensions	11.42 x 3.54 x 9.06 inches
Batteries	1 Lithium Metal battery (included)
Operating Temperature	-20°C to 85°C (-4°F to 185°F)

WARRANTY AND SUPPORT

FITCAMX provides technical support for its products. If you have any questions, require assistance with installation, or encounter issues not covered in this manual, please contact our customer service team. We are committed to providing prompt responses and support.

Please refer to your purchase documentation for specific warranty details.