

Manuals+

[Q & A](#) | [Deep Search](#) | [Upload](#)

manuals.plus /

› [EasyAcc](#) /

› [EasyAcc F18 Portable Handheld Fan User Manual](#)

EasyAcc F18

EasyAcc F18 Portable Handheld Fan User Manual

Model: F18 | Brand: EasyAcc

1. INTRODUCTION

The EasyAcc F18 Portable Handheld Fan is a versatile personal cooling device designed for convenience and efficiency. It features five adjustable speed settings, a long-lasting rechargeable battery, and a built-in power bank function. Its foldable design allows for use as a handheld, desk, or neck fan, making it suitable for various environments from office to outdoor travel.

This manual provides detailed instructions on how to set up, operate, maintain, and troubleshoot your EasyAcc F18 fan to ensure optimal performance and longevity.

2. PRODUCT FEATURES

- **Five Speed Settings:** Offers a range of airflow options from gentle breeze to strong wind.
- **Ultra-Quiet Operation:** Engineered for low noise levels, suitable for quiet environments like bedrooms or offices.
- **Extended Battery Life:** Provides 3 to 18 hours of continuous operation depending on the speed setting.
- **USB-C Rechargeable:** Fast charging via USB-C port, fully charged in approximately 3 hours.
- **Emergency Power Bank:** Equipped with a USB-A output port to charge mobile devices in emergencies.
- **LED Digital Display:** Clearly shows current fan speed and remaining battery percentage.
- **180° Foldable Design:** Transforms into a handheld fan, a stable desk fan, or can be worn around the neck with the included lanyard.
- **Detachable Front Cover:** Easy to remove for cleaning the fan blades.
- **Durable Construction:** Made with advanced ABS material for enhanced durability and an ergonomic handle for comfortable grip.

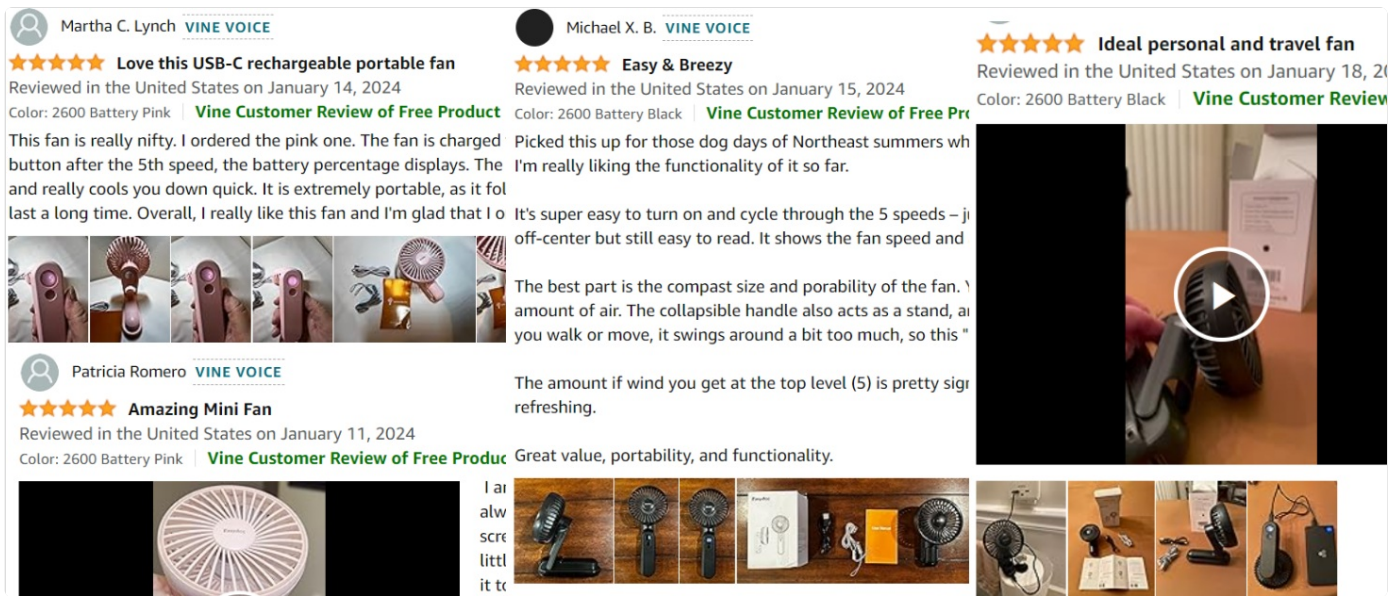


Figure 2.1: The EasyAcc F18 fan demonstrating its three versatile usage modes: handheld, desk, and worn around the neck with a lanyard.



Figure 2.2: Illustration of the fan's brushless motor and the five distinct wind speed settings, indicating their respective approximate battery durations.

3. SETUP

3.1 Initial Charging

1. Before first use, fully charge the fan.
2. Connect the provided USB-C cable to the fan's USB-C input port.
3. Connect the other end of the cable to a USB power adapter (not included) or a computer's USB port.
4. The LED display will show the charging progress. A full charge typically takes about 3 hours.



Figure 3.1: The EasyAcc F18 fan, highlighting its USB-C charging capability.

3.2 Attaching the Lanyard

To use the fan as a neck fan, attach the included lanyard to the designated loop on the fan's handle. Ensure it is securely fastened before wearing.

4. OPERATING INSTRUCTIONS

4.1 Power On/Off and Speed Adjustment

1. To turn on the fan, press the power button once. The fan will start at speed 1.
2. Press the power button repeatedly to cycle through speeds 1 to 5.
3. To turn off the fan, press and hold the power button for 3 seconds, or cycle through all 5 speeds and press once more after speed 5.
4. The LED display will show the current speed (1-5) and battery percentage (1-100).



Figure 4.1: The fan's control panel, illustrating the LED display for speed and battery, along with the USB-C input and USB-A output ports.

4.2 Using as a Power Bank

The fan can function as an emergency power bank to charge other devices.

1. Connect your mobile device's charging cable to the fan's USB-A output port.
2. Ensure the fan has sufficient battery charge to power your device.

MAKE IT DETACHABLE AND EASY TO CLEAN

Clean anytime, anywhere, no dust accumulation



No screw, just twist
the fan cover
counterclockwise
to disassemble



Figure 4.2: The fan being used to charge a smartphone, demonstrating its power bank functionality.

4.3 Folding and Positioning

The fan's handle can be folded 180° to adjust its position:

- **Handheld Mode:** Keep the handle extended for portable use.
- **Desk Fan Mode:** Fold the handle to create a stable base, allowing the fan to stand on a flat surface.
- **Neck Fan Mode:** Attach the lanyard and wear it around your neck, adjusting the fan head for optimal airflow.

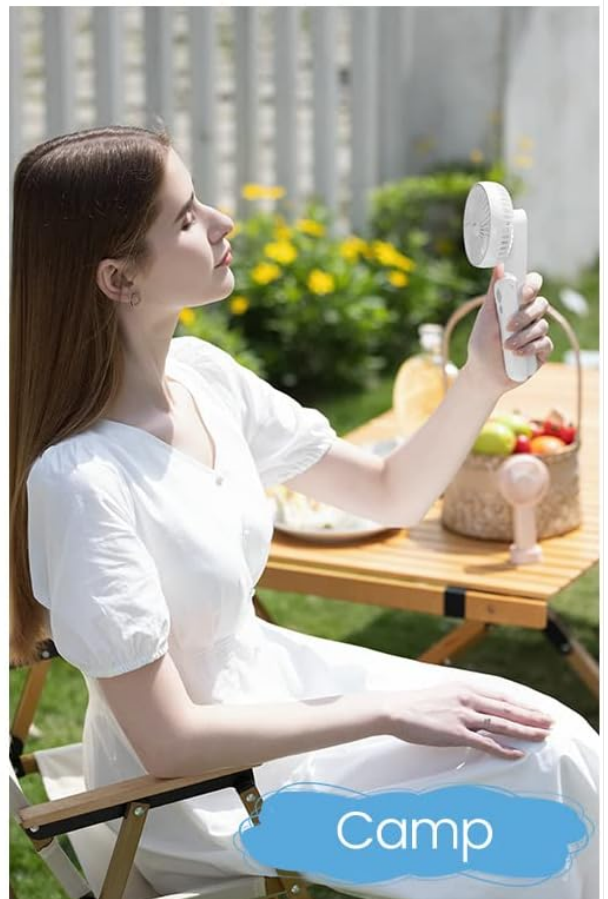


Figure 4.3: The EasyAcc F18 fan in handheld mode, showcasing its portability for personal cooling.

5. MAINTENANCE

5.1 Cleaning the Fan Blades

To maintain optimal airflow and hygiene, regularly clean the fan blades.

1. Ensure the fan is turned off before cleaning.

2. Gently rotate the front fan cover counter-clockwise to detach it from the main body. No tools are required.
3. Wipe the fan blades and the inside of the cover with a soft, damp cloth. Do not use abrasive cleaners or immerse the fan in water.
4. Allow all parts to dry completely before reattaching the front cover by rotating it clockwise until it clicks into place.



Figure 5.1: Instructions for detaching the fan cover by twisting counter-clockwise for easy cleaning of the blades.

6. TROUBLESHOOTING

| Problem | Possible Cause | Solution |
|---|---|---|
| Fan does not turn on. | Battery is depleted. | Charge the fan using the provided USB-C cable. |
| Fan stops unexpectedly. | Low battery. | Recharge the fan. |
| Weak airflow. | Fan blades are dirty or obstructed. | Clean the fan blades as described in Section 5.1. Ensure no objects are blocking the fan grille. |
| Fan makes unusual noise. | Obstruction in fan blades or loose cover. | Turn off the fan, check for any foreign objects, and ensure the front cover is securely attached. |
| Device not charging from power bank function. | Fan battery is low or cable is faulty. | Ensure the fan is sufficiently charged. Try a different USB-A cable. |

7. SPECIFICATIONS

| Feature | Detail |
|---------------------|-----------------------------|
| Brand | EasyAcc |
| Model Name | F18 |
| Color | All White (2600mAh variant) |
| Electric Fan Design | Table Fan / Handheld Fan |
| Power Source | Battery Powered |
| Product Dimensions | 7.48"D x 3.15"W x 5.51"H |

| Feature | Detail |
|---------------------------|--|
| Special Feature | Portable, Power Bank Function, LED Display |
| Recommended Uses | Travel, Office, Home, Outdoor |
| Wattage | 20 watts |
| Number of Blades | 3 |
| Speed Settings | 5 RPM (5 Power Levels) |
| Voltage | 5 Volts |
| Item Weight | 160 Grams (5.6 ounces) |
| Included Components | 1 X USB Cable |
| Main Power Connector Type | USB-C |
| Battery Type | 1 Lithium Polymer battery required |

8. WARRANTY AND SUPPORT

EasyAcc provides a lifetime warranty for this product, reflecting confidence in its advanced and mature manufacturing techniques. For any product inquiries, technical support, or warranty claims, please contact EasyAcc customer service through their official website or the retailer where the product was purchased.

Please retain your proof of purchase for warranty validation.

9. PRODUCT VIDEO OVERVIEW

Your browser does not support the video tag.

Video 9.1: An official product video from EasyAcc demonstrating the portable fan's features, including its foldable design, multiple speed settings, and use as a power bank. This video provides a visual guide to the fan's functionality and versatility.