

navycrest A2 Pro

Navycrest A2 Pro Dash Cam User Manual

Model: A2 Pro

INTRODUCTION

The Navycrest A2 Pro Dash Cam is a high-definition front and rear dash camera system designed to provide comprehensive video recording for your vehicle. Featuring 4K (3840x2160P) front recording and 1080P rear recording, it captures clear and detailed footage day and night. Key features include built-in WiFi for app control, 24-hour parking mode (requires hardwire kit), G-sensor for incident detection, and loop recording.



Image: The Navycrest A2 Pro Dash Cam system, including the main front camera unit, a separate rear camera, and a smartphone displaying the companion app interface.

SETUP AND INSTALLATION

Package Contents

Before installation, ensure all components are present:

- Main Dash Cam Unit (Front Camera)
- Rear Camera
- Power Cable
- Rear Camera Cable
- Mounting Bracket
- User Manual

- Warranty Card
- **Note:** A Micro SD card (Class 10, U3 speed, max 256GB) is **NOT** included and must be purchased separately.



Image: An overview of the typical package contents for the dash cam, showing the main unit, rear camera, various cables, and documentation.

Installation Steps

1. **Prepare the SD Card:** Insert a compatible Micro SD card (Class 10, U3 speed, up to 256GB) into the dash cam's SD card slot. Ensure it is formatted correctly by the dash cam after insertion.
2. **Mount the Front Camera:**
 - Clean the windshield area where the dash cam will be mounted.
 - Attach the mounting bracket to the dash cam.
 - Secure the dash cam to the windshield, ideally behind the rearview mirror, ensuring it does not obstruct your view.



Image: Illustration of the dash cam's adjustable mounting angle for optimal positioning.

3. **Connect Power:** Route the power cable from the dash cam to your vehicle's cigarette lighter socket or a hardwire kit (sold separately for 24-hour parking mode). Tuck the cable neatly along the windshield and dashboard edges.
4. **Install Rear Camera:**
 - Mount the rear camera on the rear windshield, ensuring a clear view.
 - Connect the rear camera to the main dash cam unit using the provided rear camera cable. Route the cable discreetly.

Front & Rear Recording

Simultaneously captures the front and rear sides of your cars, double assuring your safety.



Image: An overhead view illustrating the 160-degree front and 155-degree rear recording angles of the dash cam system.

5. **Initial Power On:** Start your vehicle. The dash cam should power on automatically and begin recording.

OPERATING INSTRUCTIONS

Basic Operation

- **Automatic Recording:** The dash cam automatically starts recording when the vehicle's ignition is turned on.

- **Loop Recording:** Footage is recorded in continuous loops. When the SD card is full, the oldest unlocked files are overwritten.
- **G-Sensor (Emergency Recording):** In case of a sudden impact or collision, the built-in G-sensor will automatically lock the current video segment to prevent it from being overwritten.

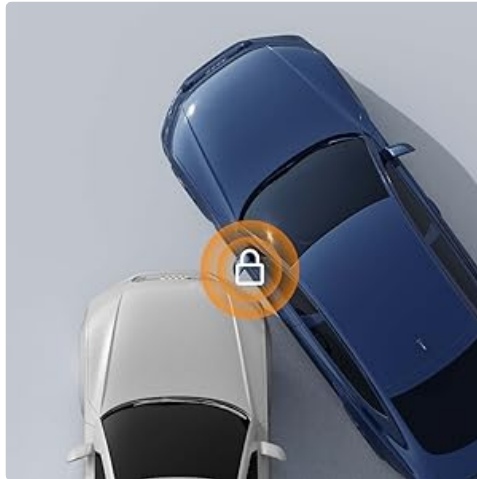


Image: Visual representation of the G-sensor feature, showing a lock icon appearing when an impact is detected, securing the video footage.

WiFi and App Control

The dash cam features built-in WiFi for seamless connection to your smartphone via the dedicated app (available for iOS and Android).

1. **Download the App:** Search for the "Navycrest" app in your device's app store.
2. **Connect to WiFi:**
 - Turn on the dash cam's WiFi function (refer to the dash cam's on-screen menu).
 - On your smartphone, go to WiFi settings and connect to the dash cam's WiFi network (SSID and password usually displayed on the dash cam screen).
3. **App Functions:** Once connected, you can:
 - View live video feed from both front and rear cameras.
 - Change dash cam settings.
 - Download recorded videos and photos to your phone.
 - Share footage directly to social media platforms.



Image: A smartphone screen showing the Navycrest dash cam app, displaying a live view of the road ahead and options for camera control and file access.

24-Hour Parking Mode

To enable the 24-hour parking mode, an optional hardwire kit (ASIN: B0B4W6S9FV) is required and sold separately. This mode allows the dash cam to continue recording at 1 frame per second (fps) after your car is turned off, providing

continuous surveillance.

24 Hours Parking Monitor +



A2 Pro dash cam can remain recording at 1fps after you turn off your car, and protect your car round the clock.

Hardwire Kit Required (Amazon search: B0B4W6S9FV)



Image: A visual depicting the 24-hour parking monitor feature, highlighting the need for a hardwire kit to enable continuous recording while the vehicle is parked.

- **SD Card Maintenance:** Regularly format your Micro SD card (at least once a month) to ensure optimal performance and prevent data corruption. Back up important files before formatting.
- **Lens Cleaning:** Keep the camera lenses clean using a soft, lint-free cloth. Avoid abrasive materials that could scratch the lens.
- **Firmware Updates:** Check the manufacturer's website or app periodically for firmware updates to ensure your dash cam has the latest features and bug fixes.
- **Temperature Considerations:** Avoid exposing the dash cam to extreme temperatures for prolonged periods, as this can affect battery life and component longevity.

Support **256GB** Max

SD card is not included in the package, please purchase a Class 10, U3 speed Micro SD card maximum 256 GB separately.

Amazon search: **B09WB1857W**

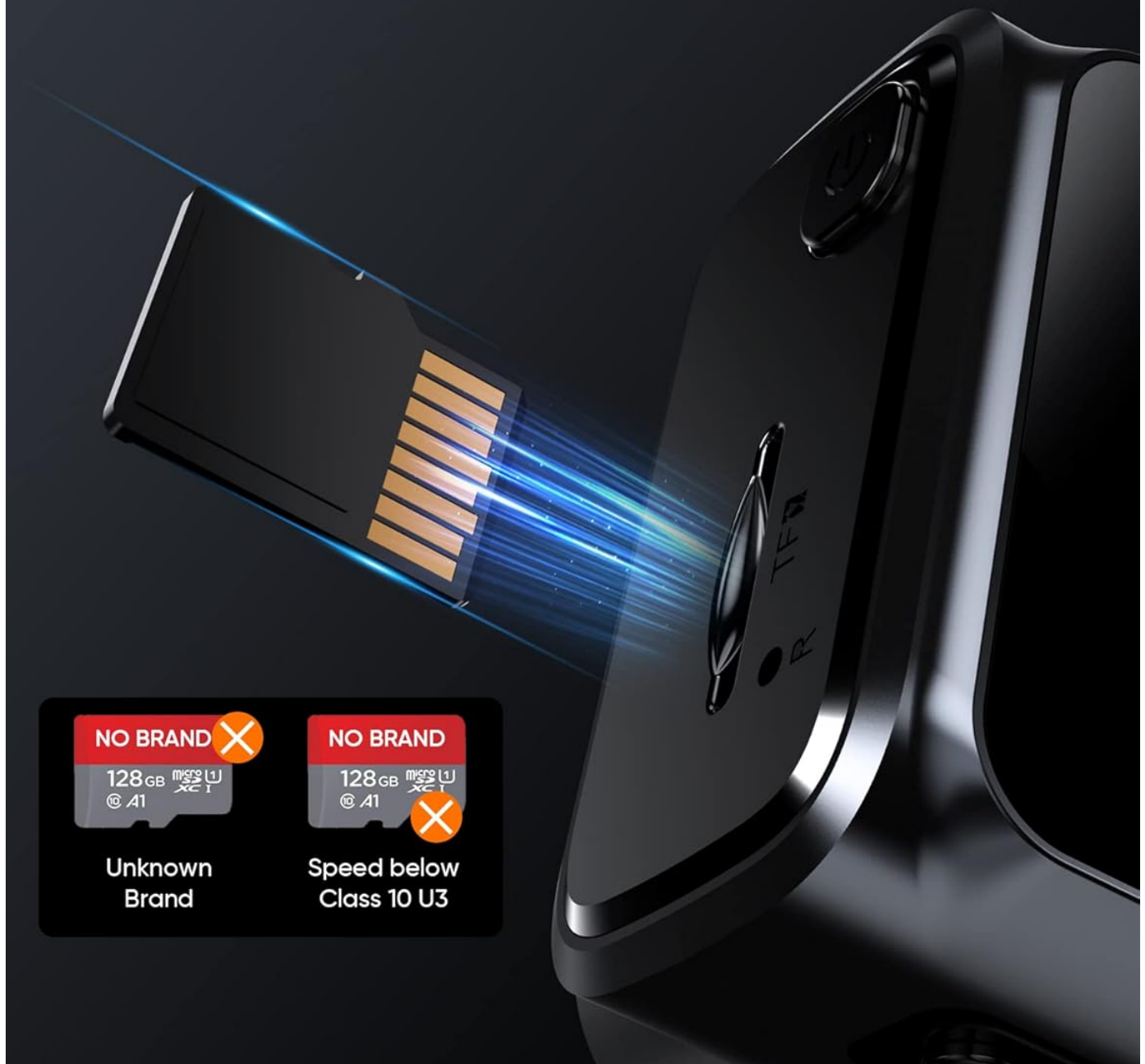


Image: A close-up of the dash cam's SD card slot, emphasizing the requirement for a Class 10, U3 speed Micro SD card up to 256GB, and cautioning against incompatible or generic cards.

TROUBLESHOOTING

Problem	Possible Cause	Solution
Dash cam does not power on.	No power supply; faulty cable; loose connection.	Check power cable connection. Ensure vehicle's cigarette lighter socket is working. Try a different power source if available.
"SD Card Full" error or recording stops.	SD card is full; card not formatted; incompatible card.	Format the SD card regularly. Ensure you are using a Class 10, U3 speed Micro SD card. Replace the card if it's old or damaged.
WiFi connection issues.	Incorrect WiFi password; app issues; interference.	Verify WiFi password. Restart both dash cam and phone. Reinstall the app. Ensure no other devices are interfering.
Poor video quality (blurry, dark).	Dirty lens; protective film still on lens; low light conditions.	Clean the lens. Remove any protective film. Ensure WDR (Wide Dynamic Range) is enabled for better low-light performance.
Dash cam resets settings after turning off car.	Power supply issue; internal battery/capacitor issue.	Ensure consistent power supply. If using a hardwire kit, verify installation. Contact customer support if the issue persists.

SPECIFICATIONS

- **Model Name:** A2 Pro
- **Front Camera Resolution:** 4K (3840x2160P)
- **Rear Camera Resolution:** 1080P
- **Front Lens Angle:** 160 degrees
- **Rear Lens Angle:** 155 degrees
- **Sensor:** Sony IMX 335 (Front)
- **Lens:** 6-Glass Lens, F1.6 Aperture
- **Connectivity:** Built-in WiFi (App Control)
- **Storage:** Supports Micro SD Card up to 256GB (Class 10, U3 required)
- **Special Features:** G-Sensor, Loop Recording, 24-Hour Parking Mode (requires hardwire kit), Super Night Vision (WDR Technology)
- **Product Dimensions:** 3 x 1 x 1 inches
- **Item Weight:** 0.212 ounces
- **Batteries:** 1 Lithium Polymer battery (included)
- **Color:** SilverGrey

WARRANTY AND SUPPORT

The Navycrest A2 Pro Dash Cam comes with a warranty card included in the package. For specific warranty terms and conditions, please refer to the provided warranty card or contact Navycrest customer support. For technical assistance, troubleshooting, or any product-related inquiries, please contact Navycrest customer service. They offer dedicated after-sales support and aim for quick responses during working days.

- **Customer Service:** Refer to the contact information provided on the warranty card or product packaging.
- **Online Resources:** Check the official Navycrest website for FAQs, updated user guides, and video tutorials.

Documents - navycrest – A2 Pro



[\[pdf\]](#) Guide

1111 User Guide Dash Cam Front and Rear 4K 1080P WiFi Camera for Cars with App 24 Hours Parking Mode G Sensor Loop Recording Support 256GB Max Electronics A1V93eZOoDL m media amazon images | |||

QUICK SET-UP CARD 1. Insert A Correct SD Card SD card is not included in the package, Please insert ... ear video from the dash cam screen or app. 4. Format the SD Card For the SD card inserted into the **A2 Pro** for the first time, the **A2 Pro** will ask to format the SD card after booting up. At this time,...

lang:en score:30 filesize: 1.47 M page_count: 4 document date: 2023-06-14