

YUNTX YUNTX Car Radio for Hyundai Grand i10

YUNTX Android 14 Car Radio with Navigation for Hyundai Grand i10 (2007-2013) User Manual

Model: YUNTX Car Radio for Hyundai Grand i10

1. INTRODUCTION

This manual provides comprehensive instructions for the installation, operation, and maintenance of your YUNTX Android 14 Car Radio. This unit is specifically designed for Hyundai Grand i10 models manufactured between 2007 and 2013. Please read this manual thoroughly before using the product to ensure correct operation and to prevent damage.

2. COMPATIBILITY

This car radio is compatible with Hyundai Grand i10 models from 2007, 2008, 2009, 2010, 2011, 2012, and 2013. If you are unsure about compatibility, please consult your vehicle's specifications or contact customer support.



**For Hyundai Grand i10
(2007-2013)**



✘ before installation

✔ after installation

Image: This image illustrates the visual difference in the car's dashboard before and after the installation of the YUNTX Android 14 Car Radio. The 'before' shows the original car radio, while the 'after' displays the new 9-inch touchscreen unit seamlessly integrated into the Hyundai Grand i10 dashboard.

3. FEATURES

3.1. Operating System and Hardware

- **Operating System:** Android 14

- **Processor:** Quad-Core
- **Memory:** 2GB RAM + 32GB ROM
- **Display:** 9-inch IPS 2.5D Digital Touchscreen with 1024 x 600 resolution
- **Audio Output:** 4 x 50W

3.2. Integrated CarPlay & Android Auto

This unit features built-in CarPlay and Android Auto, providing a smart and safe way to use your smartphone's functions while driving. Connect your phone to access navigation, make calls, send/receive messages, and play music directly from the car radio display. The system supports both wired (USB cable) and wireless (Bluetooth) connections. The start time is less than 2 seconds.

3.3. Internet Connectivity (4G/WiFi)

The car radio includes a built-in WiFi module for internet access. It also supports external 4G internet via an additional 4G modem (sold separately, e.g., B089KGJT61).

3.4. MirrorLink Functionality

Mirror your smartphone's screen onto the car radio display via a USB cable or WiFi connection. This allows you to view and control your phone's content directly on the unit's screen, compatible with both iPhone and Android phones.

3.5. GPS Navigation

The unit supports both online and offline GPS navigation applications, including 3D maps and voice guidance. You can listen to the radio, Bluetooth audio, or USB/SD media while navigation is active.

3.6. Bluetooth 5.0

Bluetooth 5.0 technology ensures faster data transmission and extended connection range. Features include quick contact search, phonebook synchronization, hands-free calling, and Bluetooth music streaming.

3.7. Radio Tuner

Equipped with an NXP TEF7708 radio IC for excellent radio reception. It includes an integrated AM/FM tuner (worldwide) and supports RDS (Radio Data System).

3.8. Steering Wheel Control

The unit supports your vehicle's existing steering wheel controls, allowing you to easily change tracks, adjust volume, answer calls, and more, minimizing distractions while driving.

3.9. OBD (On-Board Diagnostics) Support

The unit is compatible with most Bluetooth OBD2 and WiFi OBD scanners (optional, adapter must be purchased separately).

3.10. DAB+ Digital Radio (Optional)

For enhanced audio quality, the unit supports DAB+ digital radio. A separate DAB adapter (e.g., B07NRD4T9D) is required to enable this feature, providing near CD-quality sound and noise-free transmission.

3.11. Split Screen Mode

Utilize the split-screen feature to run two applications simultaneously. For example, you can have navigation on one side and a video player on the other.

3.12. Reversing Mode

The system automatically switches to the reversing camera view when the car is put into reverse gear. A 150° wide-angle rear camera is included in the package.

3.13. Multicolor Illumination

The unit supports up to 196 languages and offers customizable RGB color button lighting to match your vehicle's interior or personal preference.



4G/WiFi

Built-in WiFi module and comes with WiFi antenna for better signal reception, you can also access the internet with external 3G/4G dongle (B089KGJT61)



Bluetooth 5.0

Bluetooth 5.0 technology provides faster transmission speed and longer effective distance. Answer and make hands-free calls in seconds by pairing it with your smartphone, play music and sync phonebook.



Steering Wheel Control

You can easily control the car stereo like switch songs, switch channels, adjust volume, answer phone call and so on while driving, which helps you minimize distractions and keep eyes on the road.



Built-in CarPlay/Android Auto & Fastboot

Connect your smartphone to car stereo wirelessly through [Bluetooth](#) or wired through [USB](#) cable. The start time is less than 2 seconds.



Image: This composite image highlights several key features: 4G/WiFi connectivity for internet access, Bluetooth 5.0 for fast and stable connections, steering wheel control integration for safe operation, and the user interface for built-in CarPlay and Android Auto.



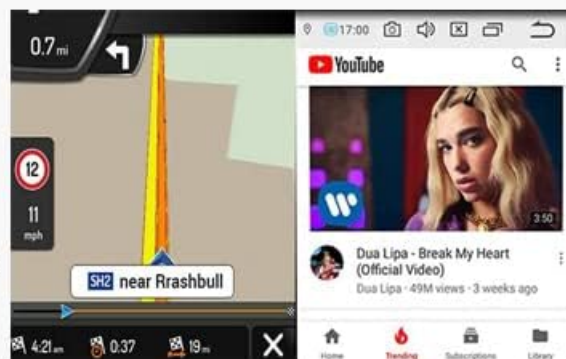
Support DAB+ (optional)

With the DAB+ antenna receiver, you can enjoy more of your favorite digital audio broadcasting radio channels. need to purchase DAB adapter separately (B07NRD4T9D)



Split Screen Mode

Run two apps side by side. For instance, you can open two windows to run navigation on the left while using the video app to play video on the right.



Mirror-Link Mode

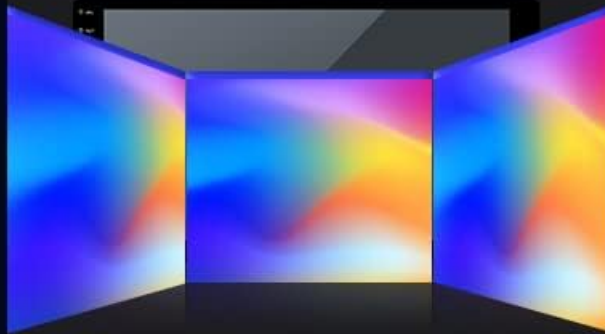


Mirror your smartphone via USB cable or WiFi connection. View and control your phone on the car stereo screen. work for iPhone and Android phone



IPS Screen

The display offers exceptional graphics with an excellent IPS Wide View Display



1080P Video Playback

2.5D
2.5D Large Screen

1280x600 Resolution

IPS Technology

Reversing Mode

Automatically switch to reverse image when the car is in reverse gear

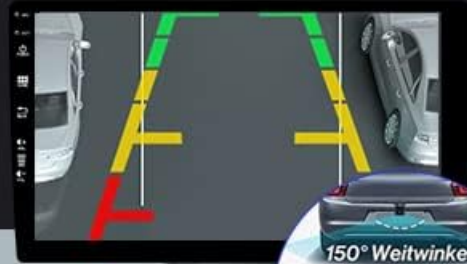


Image: This composite image displays features such as DAB+ digital radio support, the split-screen functionality, Mirror-Link mode for smartphone mirroring, the vibrant IPS screen, and the automatic reversing mode with a rear camera view.

Languages & Multicolor illumination

Support up to 196 languages, you can also customize the button light color you like

RGB color button light



Installation Tips

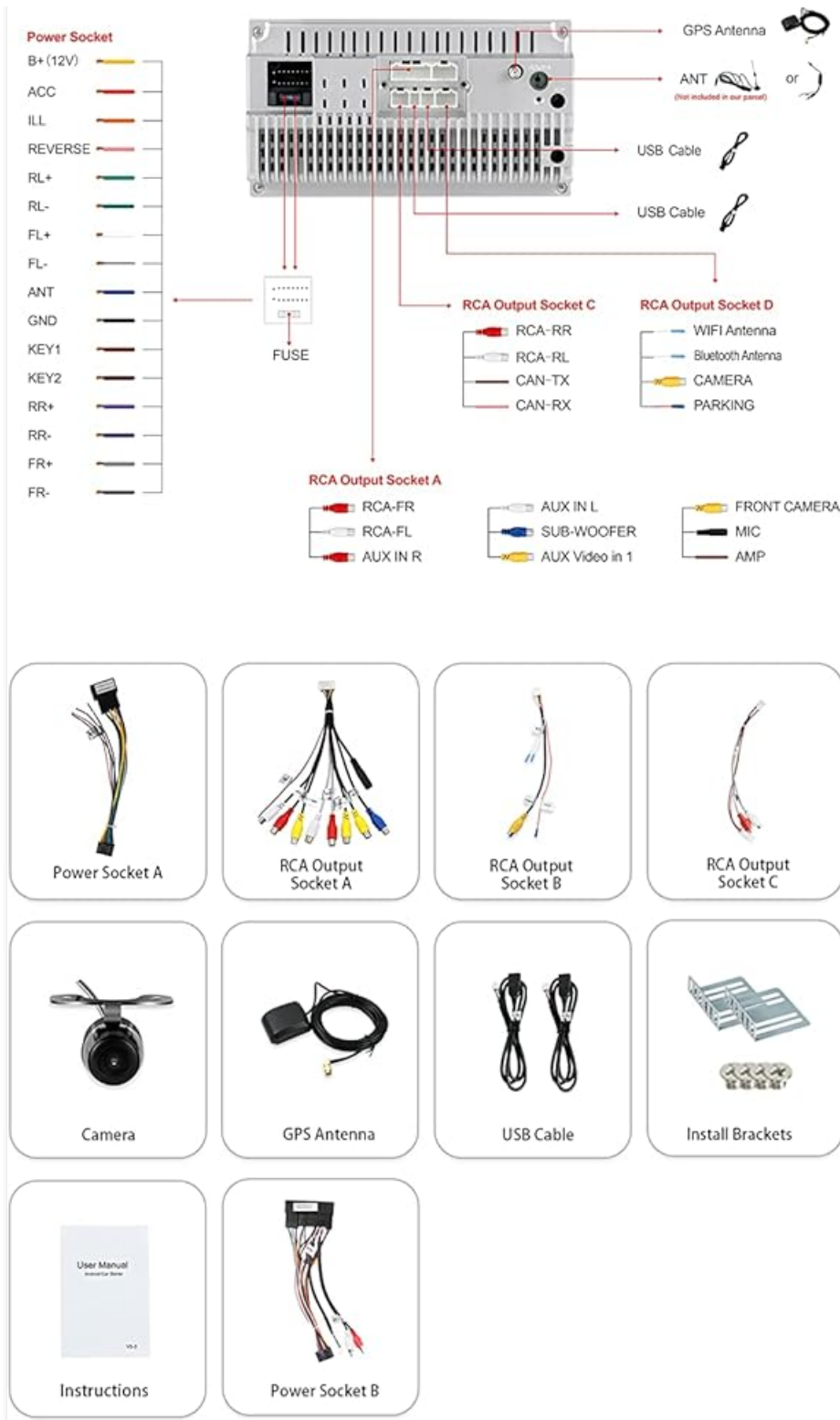


Image: This image illustrates the customizable RGB color button illumination feature, allowing users to personalize the unit's aesthetics. It also includes a detailed diagram of the wiring harness and a visual guide to the various components included for installation.

4. INSTALLATION TIPS

Proper installation is crucial for the optimal performance of your car radio. It is recommended that installation be performed by a qualified professional.

4.1. Wiring Diagram Overview

Refer to the detailed wiring diagram provided. Key connections include:

- **Power Socket:** Connects to the vehicle's power supply.
- **RCA Output Sockets (A, B, C, D):** For audio output (front, rear, subwoofer) and auxiliary input.
- **GPS Antenna:** Connect for navigation functionality.
- **WiFi Antenna:** Connect for wireless internet access.
- **USB Cables:** For data transfer, charging, and connecting external devices.
- **Camera Input:** For the rear view camera.
- **CAN-TX/CAN-RX:** For CAN bus communication (if applicable to your vehicle).
- **AMP Control:** For external amplifier control.

4.2. Included Components for Installation

The package includes various cables and accessories to facilitate installation:

- Power Cord
- RCA Output Cables (A, B)
- GPS Antenna
- USB Cables
- Wireless Antenna
- Rear Camera
- Installation Brackets

Ensure all connections are secure and correctly matched to avoid electrical issues or malfunction.

5. SETUP

5.1. Initial Power On

After installation, turn on your vehicle's ignition. The car radio should power on automatically. Follow any on-screen prompts for initial setup, such as language selection and time zone.

5.2. WiFi Connection

1. Go to **Settings > Network & Internet > Wi-Fi**.
2. Turn on Wi-Fi and select your desired network.
3. Enter the password if prompted and connect.

5.3. Bluetooth Pairing

1. On the car radio, go to **Settings > Connected devices > Bluetooth**.
2. Ensure Bluetooth is enabled and the device is discoverable.
3. On your smartphone, search for available Bluetooth devices and select the car radio (e.g., "YUNTX Car Radio").
4. Confirm the pairing code on both devices.

5.4. GPS Configuration

Ensure the GPS antenna is properly installed. The system will automatically detect GPS signals. For offline navigation, download maps using a Wi-Fi connection.

6. OPERATING INSTRUCTIONS

6.1. Using CarPlay / Android Auto

Connect your smartphone via USB or wirelessly via Bluetooth. The CarPlay or Android Auto interface will launch automatically. Follow the on-screen prompts to access navigation, music, calls, and messages.

6.2. Navigation

Tap the 'Navigation' icon on the home screen. Select your preferred navigation app (e.g., Google Maps, Waze) and enter your destination. The system will provide voice-guided directions.

6.3. Radio Operation

Tap the 'Radio' icon. You can scan for stations, save presets, and switch between AM and FM bands. If DAB+ is installed, select the DAB+ option for digital radio channels.

6.4. Media Playback

Access music and video files from USB drives, SD cards, or streaming apps. Use the 'Music' or 'Video' icons to manage playback. The unit supports 1080P video playback.

6.5. Steering Wheel Controls

Utilize your vehicle's steering wheel buttons to control volume, track skipping, and call management without taking your hands off the wheel.

6.6. Split Screen

To activate split screen, long-press the recent apps button or drag an app to one side of the screen. Select another app to occupy the other half.

7. MAINTENANCE

To ensure the longevity and optimal performance of your YUNTX car radio, follow these maintenance guidelines:

- **Screen Cleaning:** Use a soft, lint-free cloth to gently wipe the touchscreen. Avoid abrasive cleaners or harsh chemicals.
- **Software Updates:** Periodically check for available software updates through the system settings or the manufacturer's website to ensure you have the latest features and bug fixes.
- **Environmental Conditions:** Avoid exposing the unit to extreme temperatures, direct sunlight for prolonged periods, or excessive moisture.
- **Connection Checks:** Occasionally check that all cables and connections are secure, especially after driving on rough terrain.

8. TROUBLESHOOTING

If you encounter issues with your car radio, refer to the following common troubleshooting steps:

- **No Power:** Check all power connections and the vehicle's fuse box. Ensure the ignition is on.
- **No Sound:** Verify speaker connections, check volume levels, and ensure the mute function is not active. Check audio output settings.
- **GPS Signal Loss:** Ensure the GPS antenna is properly installed and has a clear view of the sky. Try restarting the unit.
- **Bluetooth Connection Issues:** Ensure Bluetooth is enabled on both the car radio and your smartphone. Try

unpairing and re-pairing the devices. Clear Bluetooth cache if possible.

- **Touchscreen Unresponsive:** Try restarting the unit. If the issue persists, a factory reset might be necessary (note: this will erase all user data).
- **CarPlay/Android Auto Not Connecting:** Ensure your phone's operating system is up to date. Try a different USB cable if using a wired connection. Check app permissions on your phone.

For persistent issues, please contact YUNTX customer support.

9. SPECIFICATIONS

Feature	Specification
Brand	YUNTX
Operating System	Android 14
Processor	Quad-Core
RAM	2 GB
ROM	32 GB
Screen Size	9 Inches
Screen Type	IPS 2.5D Touchscreen
Resolution	1024 x 600
Audio Output Power	4 x 50 Watts
Bluetooth Version	5.0
Connectivity Technology	Bluetooth, USB, Wi-Fi
Compatible Devices	Smartphone
USB Ports	2
Special Features	Built-in Bluetooth, Touchscreen, Integrated CarPlay/Android Auto, GPS, MirrorLink, Steering Wheel Control, DAB+ support (optional), OBD support (optional)

10. PACKAGE CONTENTS

The following items are included in your product package:

- 1 x YUNTX Car Radio Unit
- 1 x Power Cord
- 1 x RCA Output Cable A
- 1 x RCA Output Cable B

- 1 x GPS Antenna
- 1 x USB Cable
- 1 x Wireless Antenna
- 1 x Rear Camera
- 1 x User Manual (this document)

11. WARRANTY AND SUPPORT

Information regarding specific warranty details and software update guarantees is not available in the provided product description. For warranty claims, technical support, or inquiries about spare parts, please contact the seller or YUNTX customer service directly. Please retain your proof of purchase for any warranty-related requests.