



[Manuals.plus](#) /

> [AquaCare](#) /

> AquaCare Magneton High-Pressure Handheld Shower Head User Manual

## AquaCare 5253

# AquaCare Magneton High-Pressure Handheld Shower Head User Manual

Model: 5253 | Brand: AquaCare

## INTRODUCTION

---

This manual provides comprehensive instructions for the installation, operation, and maintenance of your AquaCare Magneton High-Pressure 8-mode Handheld Shower Head. Designed for superior performance and ease of use, this system features innovative magnetic docking and Stay-Clean nozzles for a hygienic and powerful showering experience.

## SAFETY INFORMATION

---

- Ensure all connections are secure to prevent leaks and water damage.
- Do not overtighten connections, as this may damage components.
- Use only as intended for showering and bathing.
- Keep out of reach of small children during installation to prevent choking hazards from small parts.

## PACKAGE CONTENTS

---

Please verify that all components are present before beginning installation:

- ORB Magnetic Handheld Shower Head
- Angle-adjustable Magnetic Docking Overhead Bracket
- Magnetic Docking Low-reach Wall Bracket
- 6 Ft Stainless Steel Shower Hose
- Teflon Tape
- Washers
- Installation Guide (this manual)
- Warranty Information



Figure 1: All components included in the AquaCare Magneton package.

## SETUP AND INSTALLATION

---

The AquaCare Magneton shower system is designed for quick and easy installation without the need for specialized tools. Follow these steps for a seamless setup:

1. **Prepare Your Shower Arm:** Remove your existing shower head by unscrewing it counter-clockwise. Clean any old sealant or debris from the shower arm threads.
2. **Apply Teflon Tape:** Wrap the provided Teflon tape clockwise around the threads of your shower arm 3-5 times. This helps create a watertight seal.
3. **Install Overhead Bracket:** Screw the angle-adjustable magnetic docking overhead bracket onto the shower arm by hand until snug. Do not overtighten. Ensure a washer is properly seated inside the bracket connection.
4. **Connect Shower Hose:** Attach the longer end of the 6 ft stainless steel shower hose to the overhead bracket. Hand-tighten until secure, ensuring a washer is in place.

5. **Attach Handheld Shower Head:** Connect the handheld shower head to the remaining end of the stainless steel hose. Hand-tighten until secure, ensuring a washer is in place.
6. **Install Low-Reach Wall Bracket (Optional):** The bonus low-reach wall bracket can be mounted instantly and securely on any smooth surface (tile, tub, shower doors) using its silicone adhesive back. Clean the desired surface thoroughly before application. For a more permanent installation, optional screws and anchors are included.



Figure 2: The magnetic docking system allows for easy and secure attachment of the handheld shower head.



Figure 3: The magnetic wall bracket provides instant reach and greater mobility with the 72-inch stainless steel hose.

7. **Test for Leaks:** Turn on the water supply and check all connections for leaks. If leaks occur, tighten connections slightly or reapply Teflon tape.

## OPERATING INSTRUCTIONS

---

Your AquaCare Magneton shower head offers a versatile showering experience with its 8 luxury flow settings and magnetic docking system.

### Magnetic Docking System

The unique Socket-lock Guidance System with a curved-surface design guides the connecting magnets to align automatically. Simply place the back of the Magneton shower head against either magnetic bracket, and it will securely dock itself. This allows for effortless docking even without visual guidance.



Figure 4: The Magnetan magnetic docking system ensures precise and secure attachment.

## Adjusting Flow Settings

Rotate the dial on the face of the shower head to cycle through the 8 distinct flow settings:

- **Power Rain:** A strong, drenching spray for full coverage.
- **Pulsating Massage:** Invigorating pulses for muscle relaxation.
- **Hydro-Mist:** A fine, gentle mist for a soothing experience.
- **Dual Jet:** Concentrated streams for targeted rinsing.
- **ON/OFF Pause Mode:** Temporarily reduces water flow to a trickle, conserving water without changing temperature settings.
- **Three Mixed Settings:** Combinations of the above modes for varied experiences.



Figure 5: The 8 luxury flow settings provide a customizable showering experience.

### Using the 5-inch Face

The extra-large 5-inch face ensures drenching shoulder-to-shoulder flow coverage, enhancing your showering comfort.



Figure 6: The 5-inch oversized face provides wide coverage and features anti-clog nozzles.

## MAINTENANCE

---

The AquaCare Magneton shower head is designed for low maintenance, primarily due to its revolutionary Stay-Clean nozzles.

### Stay-Clean Nozzles

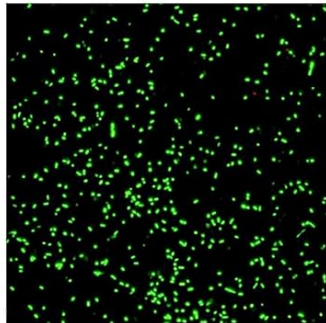
The nozzles are made with a special Stay-Clean material that works at a molecular level to protect them from grime and degradation. This ensures they remain clean and clog-free, maintaining optimal water pressure and performance over time. Regular wiping of the nozzles with a soft cloth can help remove any surface residue.

# Revolutionary Stay-Clean Anti-Clog Nozzles!



Special Stay-Clean material keeps nozzles cleaner for better shower hygiene

## 24/7 Lifetime Surface Protection



*Unprotected Surface after 24 hours.*



*Same Surface with Stay-Clean Protection*



# AquaCare®

Designed in USA Patent Pending

Figure 7: Stay-Clean Anti-Clog Nozzles provide 24/7 lifetime surface protection against grime.

## General Cleaning

To clean the exterior of the shower head and hose, use a soft cloth and mild soap. Avoid abrasive cleaners, solvents, or harsh chemicals, as these can damage the finish. Rinse thoroughly with water after cleaning.

## TROUBLESHOOTING

Problem	Possible Cause	Solution
Low Water Pressure	Clogged nozzles (unlikely with Stay-Clean), water restrictor, low household water pressure.	Ensure nozzles are clear by gently rubbing them. Check household water pressure. Ensure no water restrictor is installed (if applicable and removable per local codes).
Leaks at Connections	Loose connections, insufficient Teflon tape, missing or improperly seated washers.	Tighten connections by hand. Disassemble, reapply Teflon tape, and ensure washers are correctly seated before reassembling.

Problem	Possible Cause	Solution
Handheld Shower Head Does Not Dock Securely	Misalignment, debris on magnetic surfaces.	Ensure the shower head is aligned with the curved surface of the bracket. Clean any debris from the magnetic surfaces on both the shower head and the bracket.

## SPECIFICATIONS

Feature	Detail
Brand	AquaCare
Model Number	5253
Style	With Extra Wall Bracket
Shape	Round
Material	Acrylonitrile Butadiene Styrene, Stainless Steel
Finish Type	Oil Rubbed Bronze
Setting Type	Rain
Installation Type	Multi-mount
Flow Rate	2.5 Gallons Per Minute (GPM)
Product Dimensions	10"L x 5"W
Hose Length	6 Feet (72 inches)
Number of Settings	8
Number of Jets	1 (main shower head)
Item Weight	1.87 pounds
UPC	786696052539
Included Components	ORB Magnetic Handheld Shower Head, Angle-adjustable Magnetic Docking Overhead Bracket, Magnetic Docking Low-reach Wall Bracket, 6 Ft Stainless Steel Shower Hose, Teflon Tape, Washers and Installation Guide, Warranty

## WARRANTY AND SUPPORT

Your AquaCare Magneton High-Pressure Handheld Shower Head comes with a **Lifetime Warranty** directly from AquaCare, ensuring long-term performance and peace of mind.

For customer service and support, please contact AquaCare's American Customer Service team. Refer to the contact information provided on the product packaging or the official AquaCare website for the most current support details.

When contacting support, please have your product model number (5253) and purchase date available.

