



[Manuals.plus](#) /

› [AquaCare](#) /

› Magneton High-Pressure 8-mode Handheld Shower Head User Manual

AquaCare Magneton

Magneton High-Pressure 8-mode Handheld Shower Head User Manual

Model: Magneton | Brand: AquaCare

INTRODUCTION

Thank you for choosing the Magneton High-Pressure 8-mode Handheld Shower Head with Magnetic Guidance Docking System. This manual provides essential information for the safe and effective installation, operation, and maintenance of your new shower system. Please read it thoroughly before use and retain it for future reference.

SAFETY INFORMATION

- Ensure water supply is turned off before installation to prevent leaks or injury.
- Do not overtighten connections, as this may damage threads or components.
- Use only the provided components and tools where specified.
- Keep small parts away from children to prevent choking hazards.
- If you encounter any difficulties during installation or operation, consult a qualified plumber or contact AquaCare customer service.

PACKAGE CONTENTS

Verify that all components are present before beginning installation:

- Magneton Handheld Shower Head
- 72-inch Heavy-duty Stainless Steel Hose
- Angle-adjustable Overhead Magnetic Bracket
- Bonus Low-reach Wall Magnetic Bracket (with silicone adhesive back)
- Washers

- Plumber's Tape (PTFE Tape)
- Optional Screws and Anchors for Wall Bracket



Figure 1: Magneton Shower System Components

SETUP AND INSTALLATION

No tools are needed for standard installation. Follow these steps:

1. Prepare the Shower Arm:

Ensure your existing shower arm is clean and free of debris. Remove any old shower head if present.

2. Apply Plumber's Tape:

Wrap plumber's tape (PTFE tape) clockwise around the threads of your shower arm 3-5 times. This helps prevent leaks.

3. Install Overhead Magnetic Bracket:

Screw the angle-adjustable overhead magnetic bracket onto the shower arm by hand until snug. Do not overtighten. Ensure the magnetic docking surface faces downwards.



Figure 2: Magnetic Docking System

4. Connect Hose to Shower Head:

Attach one end of the 72-inch stainless steel hose to the handheld shower head. Ensure a washer is inside the hose connection. Hand-tighten securely.

5. Connect Hose to Overhead Bracket:

Attach the other end of the hose to the outlet on the overhead magnetic bracket. Ensure a washer is inside this hose connection. Hand-tighten securely.

6. Install Low-reach Wall Bracket (Optional):

For the bonus low-reach wall bracket, clean and dry the desired surface. Peel off the protective backing from the silicone adhesive. Press the bracket firmly onto the surface for 30 seconds. For added security, optional screws and anchors are included for permanent mounting.



Figure 3: Two Magnetic Brackets for Versatile Use

7. Test for Leaks:

Turn on the water supply slowly and check all connections for leaks. If leaks occur, tighten connections slightly or reapply plumber's tape.

OPERATING INSTRUCTIONS

Magnetic Docking System

The Magneton shower head features a unique Socket-lock Guidance System. To dock the shower head, simply bring the back of the shower head close to the magnetic bracket. The magnets will guide the shower head into place, securing it automatically and precisely.



Figure 4: Close-up of Magnetic Docking

Flow Settings

Your Magneton shower head offers 8 luxury flow settings. Rotate the dial on the face of the shower head to select your desired spray pattern:

- **Power Rain:** A strong, drenching spray for full coverage.
- **Pulsating Massage:** Invigorating pulses for muscle relief.
- **Hydro-Mist:** A fine, gentle mist for a soothing experience.
- **Dual Jet:** Concentrated streams for targeted rinsing.
- **ON/OFF Pause Mode:** Temporarily reduces water flow to a trickle, conserving water while lathering.
- Three mixed settings combining the above patterns.



Figure 5: 8 Luxury Flow Settings



5" Oversize
Face

Anti-Clog
RUB-CLEAN
Nozzles for
High Precision Flow

Figure 6: 5-inch Oversize Face and Anti-Clog Nozzles



Figure 7: Water-Saving Stay-Warm Gentle Mist Setting

MAINTENANCE

Stay-Clean Nozzles

The Magneton shower head features revolutionary Stay-Clean nozzles designed to resist grime and degradation. To maintain optimal performance and prevent mineral buildup, periodically rub the nozzles with your finger or a soft brush while water is flowing. This will dislodge any deposits and ensure consistent spray patterns.

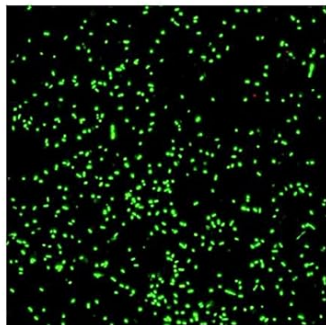
Revolutionary Stay-Clean Anti-Clog Nozzles!

AS SEEN ON
TV

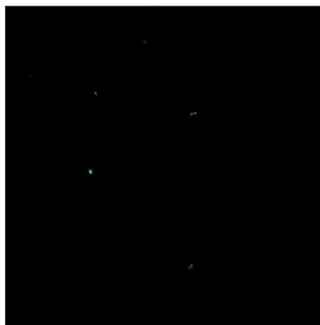


Special Stay-Clean material keeps nozzles cleaner for better shower hygiene

24/7 Lifetime Surface Protection



Unprotected Surface after 24 hours.



Same Surface with Stay-Clean Protection

AquaCare®

Designed in USA Patent Pending

Figure 8: Stay-Clean Anti-Clog Nozzles

General Cleaning

Clean the exterior of the shower head and hose with a soft cloth and mild soap or a non-abrasive bathroom cleaner. Avoid using harsh chemicals, abrasive cleaners, or scouring pads, as these can damage the chrome finish.

TROUBLESHOOTING

Problem	Possible Cause	Solution
Water leaks from connections.	Loose connections or insufficient plumber's tape.	Ensure connections are hand-tight. Disassemble, reapply plumber's tape, and reassemble. Check for presence of washers.
Low water pressure.	Clogged nozzles or mineral buildup.	Rub the Stay-Clean nozzles to dislodge deposits. Check for kinks in the hose.

Problem	Possible Cause	Solution
Shower head does not dock securely.	Obstruction on magnetic surface or improper alignment.	Ensure magnetic surfaces on both the shower head and bracket are clean. Align the shower head directly with the bracket.

SPECIFICATIONS

Brand: AquaCare

Model: Magneton

Face Diameter: 5 inches

Flow Settings: 8 (Power Rain, Pulsating Massage, Hydro-Mist, Dual Jet, ON/OFF Pause, and three mixed settings)

Hose Length: 72 inches (6 ft.)

Material: All Chrome Plated Premium ABS, Stainless Steel Shower Hose

Finish Type: Chrome

Nozzle Type: Stay-Clean Anti-Clog

Docking System: Magnetic Guidance (Socket-lock)

WARRANTY AND SUPPORT

AquaCare provides a Lifetime Warranty directly from the manufacturer for the Magneton High-Pressure 8-mode Handheld Shower Head. This warranty covers defects in materials and workmanship under normal use.

For customer service, technical support, or warranty claims, please contact AquaCare directly. Refer to the packaging or the AquaCare website for the most current contact information.

Note: Proof of purchase may be required for warranty claims.

