

EMKE ESFTR1340X1A

EMKE Electric Towel Warmer with Thermostat and Timer

Model: ESFTR1340X1A (Anthracite, 1320x400mm, 600W)

1. PRODUCT OVERVIEW

The EMKE Electric Towel Warmer is designed to provide warmth and dry towels efficiently. This model features a flat tube design for enhanced contact area, promoting faster drying and improved hygiene. It comes pre-filled with antifreeze and includes a thermostatic heating element for precise temperature control and timer functions.



Image 1.1: EMKE Electric Towel Warmer (Anthracite) installed in a modern bathroom setting.

Key Features:

- **Material:** High-quality mild steel, compliant with BS EN 442 standards.
- **Energy Type:** Electric heating.
- **Mounting:** Wall-mounted, vertical orientation.
- **Thermostatic Control:** Adjustable temperature range from 30°C to 70°C.
- **Timer Function:** Programmable settings for 2H, 4H, 6H, or 8H operation.
- **High Thermal Conductivity:** Efficiently heats the bathroom and dries towels.
- **Pre-installed:** Heating element and antifreeze are pre-installed for convenience.

Package Contents:

- EMKE Electric Towel Warmer
- Thermostatic control head for heating element
- Installation kit (wall brackets, screws, anchors)
- Instruction Manual

2. SAFETY INFORMATION

Please read all safety instructions carefully before installation and operation to prevent injury or damage. Keep this manual for future reference.

- Ensure the towel warmer is installed by a qualified electrician in accordance with local regulations.
- Do not cover the towel warmer with excessive items, as this may cause overheating.
- Keep children away from the appliance during operation, as surfaces can become hot.
- Do not immerse the appliance or its electrical components in water.
- Disconnect from power supply before cleaning or maintenance.
- The heating rod must always be mounted on the bottom edge of the radiator. Incorrect installation can lead to malfunction or damage.

3. SETUP AND INSTALLATION

The EMKE Electric Towel Warmer is designed for straightforward installation. The heating element and antifreeze are pre-installed. You only need to attach the thermostatic control head and mount the unit to the wall.

Installation Steps:

1. **Unpack and Inspect:** Carefully remove all components from the packaging. Inspect for any damage.
2. **Attach Thermostatic Head:** Locate the thermostatic control head and securely attach it to the pre-installed heating rod. Ensure it is firmly screwed into place. The heating rod is installed on the left side of the towel warmer.
3. **Mark Drilling Points:** Hold the towel warmer against the desired wall location. Use a pencil to mark the positions for the wall brackets. Ensure the heating rod is at the bottom.
4. **Drill Holes:** Drill holes at the marked positions using an appropriate drill bit for your wall type. Insert wall anchors if necessary.
5. **Mount Brackets:** Secure the wall brackets to the wall using the provided screws.
6. **Mount Towel Warmer:** Carefully lift the towel warmer and align it with the wall brackets. Secure it in place. The adjustable wall distance is between 99-115 mm (from the wall to the outer edge of the towel warmer).
7. **Connect to Power:** Plug the towel warmer into a suitable electrical outlet.

Installation facile

Avec le thermoplongeur et l'antigel préinstallés, il suffit de brancher le thermostat, de le fixer au mur et le tour est joué.



Image 3.1: Illustration of the easy installation process, highlighting the pre-installed heating element and simple thermostat connection.

Notes d'installation: La tige chauffante doit toujours être montée sur le bord inférieur du radiateur !

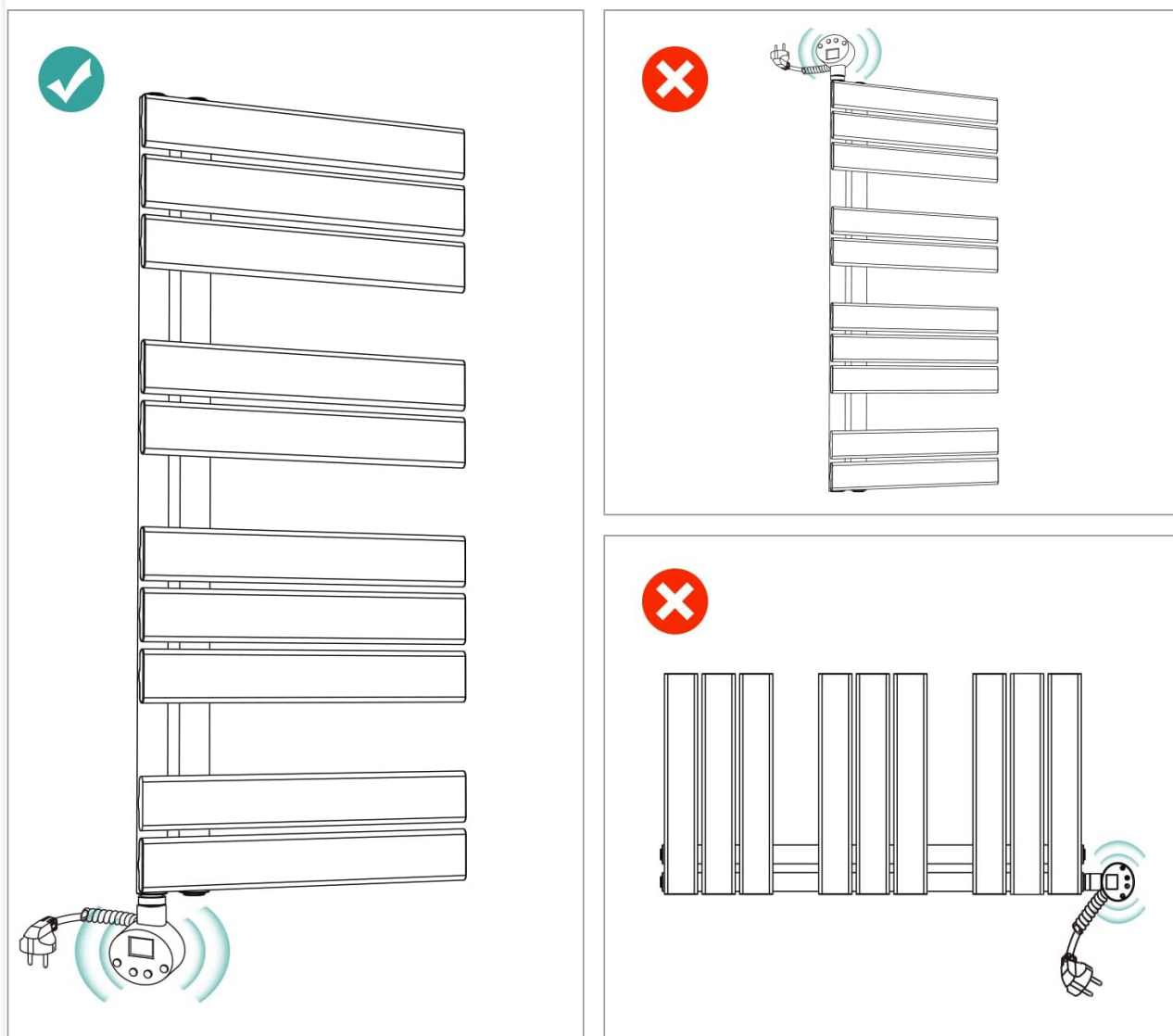
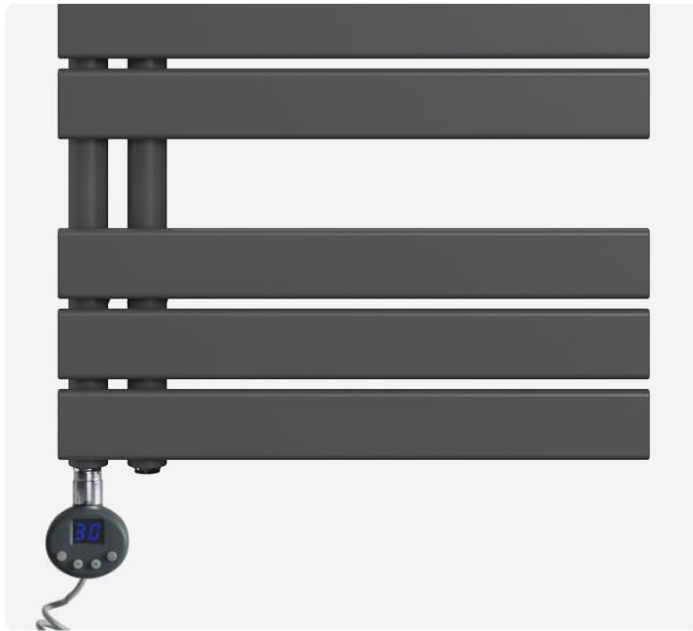


Image 3.2: Important installation note: The heating rod must always be mounted on the bottom edge of the radiator (indicated by a green checkmark for correct placement and red crosses for incorrect placements).

4. OPERATING INSTRUCTIONS

Your EMKE Electric Towel Warmer features a user-friendly control panel for temperature and timer settings.

Baguette chauffante électrique avec thermostat



Zone prédéterminée
Température constante: 30°C ~ 70°C



Paramètres de la minuterie:
2H/4H/6H/8H



Mode de chronométrage:
Dans ce mode, le radiateur
fonctionne à puissance maximale..
**Et maintenir la
température à 65°C**

Image 4.1: Digital thermostat control displaying temperature and timer options.

Temperature Control:

- Use the '+' and '-' buttons on the control panel to adjust the desired temperature.
- The thermostat range is from 30°C to 70°C.
- The display will show the set temperature.

Timer Function:

- Press the timer button to cycle through the available timer settings: 2 hours, 4 hours, 6 hours, or 8 hours.
- Once a timer is set, the towel warmer will operate for the selected duration and then automatically turn off.

Chronometer Mode:

- This mode allows the radiator to function at maximum power initially and then maintain a temperature of 65°C. Refer to the control panel for activation details.

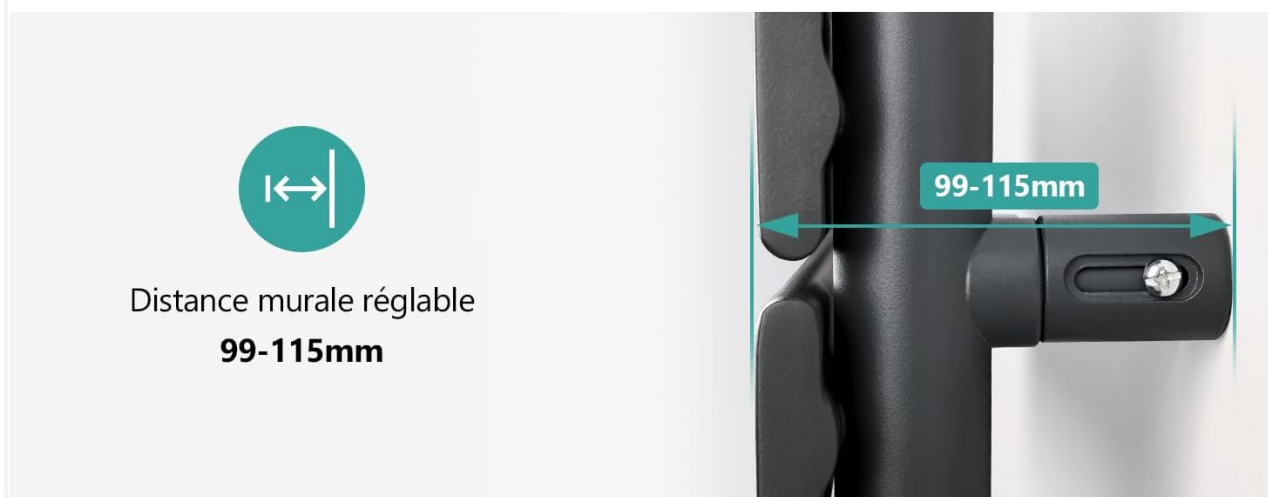
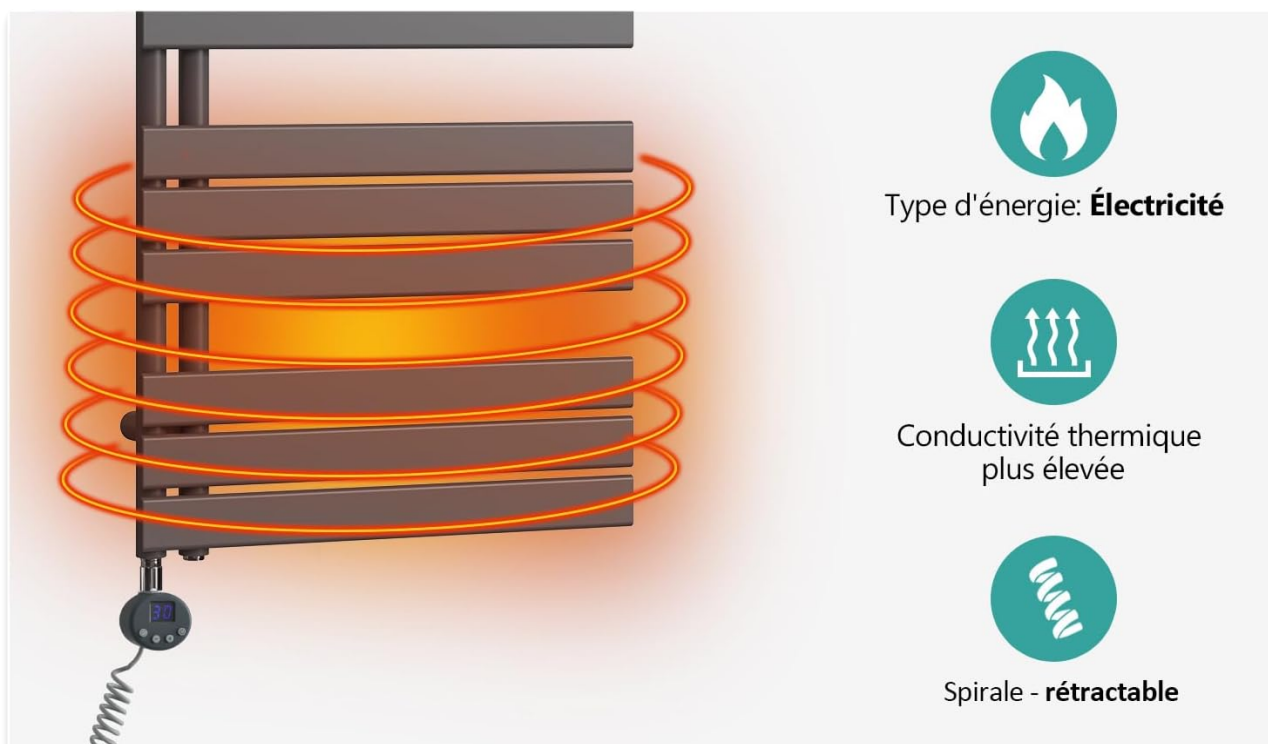


Image 4.2: Visual representation of the electric heating process and high thermal conductivity.

5. MAINTENANCE

Regular maintenance ensures the longevity and efficient operation of your EMKE Electric Towel Warmer.

- **Cleaning:** Disconnect the power before cleaning. Wipe the surface with a soft, damp cloth. Do not use abrasive cleaners or solvents.
- **Inspection:** Periodically check the power cord and plug for any signs of damage. Ensure all wall mounting screws are tight.
- **Antifreeze:** The unit is pre-filled with antifreeze. Do not attempt to open or refill the unit yourself. If you suspect a leak or issue, contact qualified service personnel.

6. TROUBLESHOOTING

If you encounter issues with your towel warmer, refer to the following common problems and solutions:

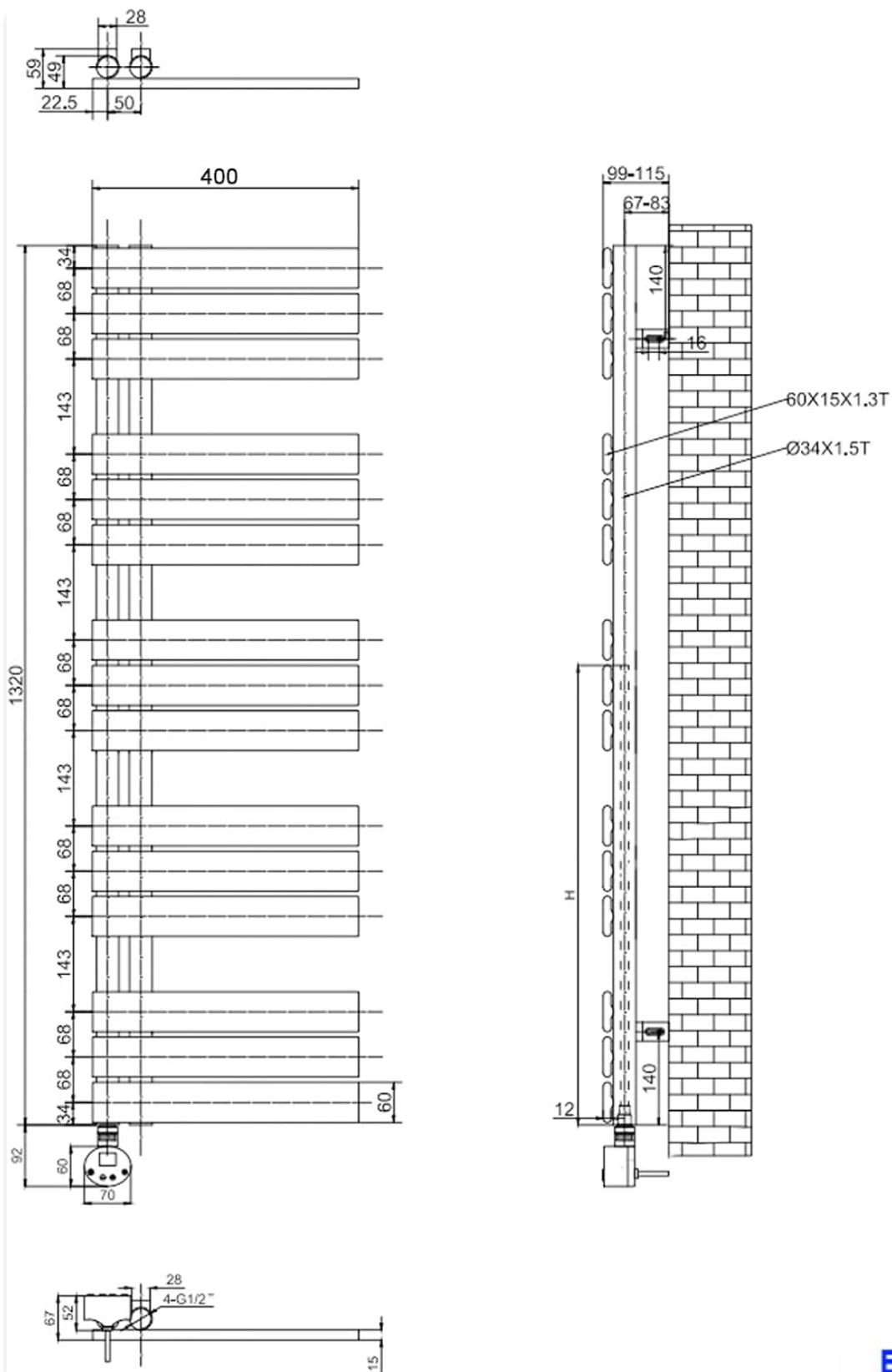
Problem	Possible Cause	Solution
---------	----------------	----------

Problem	Possible Cause	Solution
Towel warmer does not heat up.	No power supply; Thermostat set too low; Faulty heating element.	Check power connection and wall outlet; Increase thermostat setting; Contact customer support if issue persists.
Towel warmer is not drying towels effectively.	Too many towels; Room temperature too low; Incorrect thermostat setting.	Avoid overloading the warmer; Ensure bathroom is adequately heated; Adjust thermostat to a higher setting.
Unusual noises from the unit.	Air in the system (unlikely for pre-filled electric unit); Loose mounting.	Ensure unit is securely mounted; If noises persist, contact customer support.

If the problem cannot be resolved using the troubleshooting guide, please contact EMKE customer support.

7. SPECIFICATIONS

Detailed technical specifications for the EMKE Electric Towel Warmer (Model: ESFTR1340X1A).



Einheit: mm

Image 7.1: Technical drawing showing precise dimensions of the towel warmer.

Feature	Specification
Brand	EMKE
Model Number	ESFTR1340X1A
Color	Anthracite
Dimensions (L x W x H)	40 x 5.9 x 132 cm (1320x400mm)

Feature	Specification
Weight	23.53 Kilograms
Material	Mild Steel
Heating Element Power	600 W
Power Supply	AC 220-240 V / 50 Hz
Operating Temperature Range	0°C to 55°C
Thermostat Adjustment Range	30°C to 70°C
Timer Settings	2H / 4H / 6H / 8H
Wall Distance (adjustable)	99-115 mm
Pressure Resistance	4 bars

Référence taille:

Veuillez faire attention à la taille du produit avant d'acheter, choisissez la bonne taille!



Image 7.2: Reference for various EMKE towel warmer sizes. Please ensure you have the correct model for your needs.


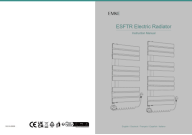


8. WARRANTY AND SUPPORT

EMKE products are manufactured to high-quality standards. For warranty information, technical support, or spare parts availability, please refer to your purchase documentation or contact EMKE customer service directly.

Please have your model number (ESFTR1340X1A) and purchase date ready when contacting support.

© 2025 EMKE. All rights reserved.

Related Documents - ESFTR1340X1A

	<p>EMKE PTR PCTR Electric Towel Rail Installation and User Manual</p> <p>Comprehensive installation and user guide for the EMKE PTR PCTR electric towel rail. Learn about setup, operation modes, app connectivity, and troubleshooting for your heated towel rail.</p>
	<p>EMKE ESFTR Electric Radiator Instruction Manual</p> <p>Comprehensive instruction manual for the EMKE ESFTR Electric Radiator, covering installation, operation, technical specifications, app connectivity, and safety guidelines.</p>
	<p>EMKE ERG200W Electric Glass Panel Heater - Instruction Manual</p> <p>Comprehensive instruction manual for the EMKE ERG200W Electric Glass Panel Heater. Covers safety warnings, technical specifications, installation (freestanding and wall-mount), control panel functions, WiFi connectivity and app usage via the Smart Life app, cleaning, maintenance, and disposal instructions.</p>
	<p>EMKE ERG200W Electric Glass Panel Heater: Instruction Manual & User Guide</p> <p>This EMKE ERG200W Electric Glass Panel Heater instruction manual provides essential guidance on safety, technical specifications, installation (freestanding and wall-mount), control panel operation, WiFi connectivity via the Smart Life app, cleaning, maintenance, and disposal. Ensure safe and optimal use of your EMKE heater.</p>