

Brigii H5-Wall mount

Brigii H5 Pet Hair Vacuum User Manual

Model: H5-Wall Mount

1. INTRODUCTION

Thank you for choosing the Brigii H5 Pet Hair Vacuum. This cordless handheld vacuum is designed for efficient cleaning of pet hair and dust from various surfaces in your home and car. With its powerful brushless DC motor, triple filtration system, and versatile attachments, the Brigii H5 provides a convenient and effective cleaning solution.



Figure 1.1: Brigii H5 Pet Hair Vacuum and Included Accessories

2. PRODUCT FEATURES

- **Anti-tangle Hair Tool:** Enables efficient removal of pet hair from surfaces such as blankets, sofas, furniture, stairs, and upholstery.
- **Triple Filtration System:** Effectively filters pet hair and dust, expelling clean air.
- **Powerful Suction:** Equipped with a high-performance DC brushless motor, offering up to 14,000Pa of powerful suction with two modes (strong and standard).
- **Reliable Lithium Battery:** Features a safe power lithium battery with a Type-C charging cable. Fully charges within 4 hours and provides up to 22 minutes of powerful suction in standard mode.
- **Quiet Operation:** Designed for low noise levels during use.



Anti-Tangle Hair Tool (Multi-surface tool)

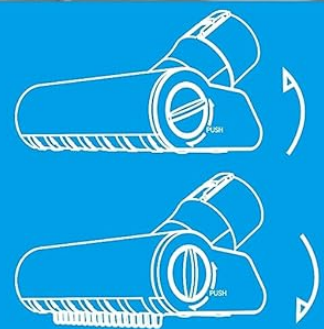


Figure 2.1: Anti-Tangle Hair Tool Design for Effortless Cleaning

3. PACKAGE CONTENTS

Ensure all items are present in the package:

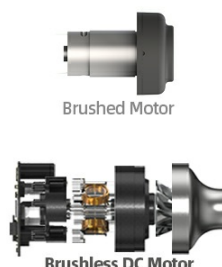
- Brigii H5 Pet Hair Vacuum Unit
- Anti-tangle Hair Tool (Multi-surface tool)
- 2-in-1 Brush Nozzle

- Crevice Tool
- USB-C Charging Cable
- Wall Mount Base (with two fixing methods: screw fixation and mounting tape fixation)

WHY ?

choose a handheld vacuum with BLDC motor

REDUCE CARBON EMISSIONS



A comparison based on the motors rated power of 65W

ENERGY LOSS

66% less

CO₂ Emissions

Figure 3.1: Contents of the Brigii H5 Package

4. SETUP

4.1 Charging the Vacuum

Before first use, fully charge the vacuum. Connect the provided USB-C charging cable to the vacuum's charging port and plug the other end into a compatible USB power adapter (not included). The battery indicator lights will show charging progress. A full charge takes approximately 4 hours.

4.2 Attaching Accessories

The Brigii H5 comes with several attachments for different cleaning needs:

- **Anti-tangle Hair Tool:** Ideal for pet hair on upholstery, carpets, and stairs. Simply push it onto the vacuum's suction opening until it clicks into place.
- **2-in-1 Brush Nozzle:** Can be used as a brush for delicate surfaces or extended as a narrow nozzle for tight spaces. Attach by pushing onto the suction opening.
- **Crevice Tool:** Perfect for reaching into narrow gaps, corners, and edges. Attach by pushing onto the suction opening.



Figure 4.1: Attaching the Anti-Tangle Hair Tool

4.3 Wall Mount Installation

The included wall mount base provides convenient storage and charging. Choose a suitable location near a power outlet. The mount can be fixed using screws or the provided mounting tape. Ensure the surface is clean and dry before applying tape or drilling for screws. Once installed, the vacuum and its accessories can be neatly stored.



High-Efficiency Brushless DC Motor

Up to 14,000Pa

Figure 4.2: Wall Mount for Convenient Storage

5. OPERATING INSTRUCTIONS

5.1 Powering On/Off and Suction Modes

Press the power button to turn on the vacuum. It will start in standard suction mode (9,000Pa). Press the power button again to switch to strong suction mode (14,000Pa). Press a third time to turn off the vacuum.

5.2 Using the Anti-tangle Hair Tool

This tool is specifically designed to pick up pet hair without tangling. Use it on upholstered furniture, pet beds, carpets, and stairs. Glide the tool over the surface, applying gentle pressure for optimal hair removal.



Figure 5.1: Effective Pet Hair Removal

5.3 Using the Crevice Tool

The crevice tool is ideal for cleaning tight spaces, such as between couch cushions, car seats, along baseboards, and in corners. Its narrow design allows for precise cleaning in hard-to-reach areas.



2 in 1 Brush nozzle



Figure 5.2: Cleaning with the Crevice Tool

5.4 Using the 2-in-1 Brush Nozzle

This versatile tool can be used in two ways: as a soft brush for delicate surfaces like keyboards or car dashboards, or with the brush retracted for general vacuuming of crumbs and debris on flat surfaces.



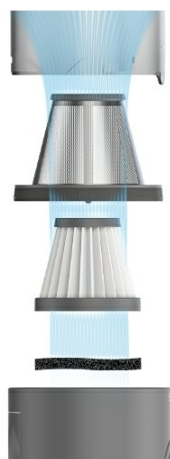
Crevice tool

Figure 5.3: Versatile 2-in-1 Brush Nozzle

6. MAINTENANCE

6.1 Emptying the Dust Cup

For optimal performance, empty the 0.4-liter dust cup regularly, especially after each significant use. To empty, twist the dust cup counter-clockwise to detach it from the main unit. Dispose of the collected debris and reattach the dust cup by twisting clockwise until secure.



Triple filtration system

Effectively filters pet hair and dust, expelling clean air.

Figure 6.1: Emptying the Dust Cup

6.2 Cleaning the Triple Filtration System

The triple filtration system includes a pre-filter, HEPA filter, and a sponge filter. These should be cleaned periodically to maintain suction power and air quality. Detach the dust cup and carefully remove the filter components. Tap off loose dust or rinse them with water if heavily soiled. Ensure all filter components are completely dry before reassembling them into the vacuum.



Figure 6.2: Triple Filtration System Components

6.3 General Cleaning

Wipe the exterior of the vacuum with a soft, damp cloth. Do not use harsh chemicals or abrasive cleaners. Ensure the charging port is free of dust and debris.

7. TROUBLESHOOTING

Problem	Possible Cause	Solution
Vacuum does not turn on	Battery is depleted	Charge the vacuum fully (approx. 4 hours).

Problem	Possible Cause	Solution
Low suction power	Dust cup is full	Empty the dust cup.
	Filters are clogged	Clean or replace the filters. Ensure they are completely dry before reinstallation.
	Nozzle/hose is blocked	Check for and remove any blockages in the nozzle or suction path.
Vacuum stops unexpectedly	Battery is low	Recharge the vacuum.
	Overheating protection activated	Turn off the vacuum and let it cool down for at least 30 minutes before resuming use.

8. SPECIFICATIONS

Feature	Specification
Model Name	Brigii Pet Hair Vacuum H5-Wall Mount
Suction Power	Up to 14,000Pa (Strong Mode) / 9,000Pa (Standard Mode)
Motor Type	Brushless DC Motor
Battery Type	Rechargeable Lithium-ion (2000mAh)
Charging Time	Approx. 4 hours
Runtime	Up to 22 minutes (Standard Mode)
Dust Cup Capacity	0.4 Liters
Filtration System	Triple Filtration (HEPA Filter)
Noise Level	65 dB
Product Dimensions	12.99"L x 3.27"W x 3.27"H
Item Weight	1.34 pounds

9. WARRANTY & SUPPORT

9.1 Warranty Information

The Brigii H5 Pet Hair Vacuum comes with a **one-year limited warranty** from the date of purchase. This warranty covers manufacturing defects and issues arising from normal use. Please retain your proof of purchase for warranty claims.

9.2 Customer Support

If you encounter any issues with your Brigii H5 vacuum or have questions not covered in this manual, please do not hesitate to contact our customer support team. We are committed to resolving your concerns and ensuring your satisfaction.

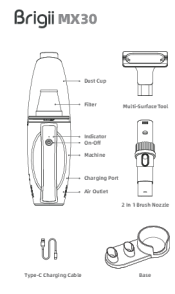
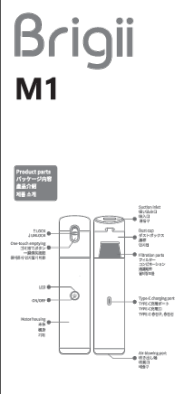

Contact Information:

Email: support@brigii.com

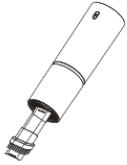
Website: [Visit the Brigii Store on Amazon](#)

© 2024 Brigii. All rights reserved.

Related Documents - H5-Wall mount

	<p>Brigii MX30 Cordless Handheld Vacuum Cleaner User Manual</p> <p>Official user manual for the Brigii MX30 cordless handheld vacuum cleaner. Includes operation, display status, troubleshooting, and cleaning and maintenance instructions for optimal performance.</p>
	<p>Brigii M1 Handheld Vacuum Cleaner User Manual</p> <p>User manual for the Brigii M1 handheld vacuum cleaner. This guide covers product parts, charging, operation, LED status indicators, included accessories, usage for suction, blowing, and vacuum compression bags, as well as cleaning and maintenance instructions.</p>
	<p>Brigii M2 Handheld Vacuum Cleaner User Guide</p> <p>User guide for the Brigii M2 Handheld Vacuum Cleaner, covering important safety instructions, product diagrams, specifications, and troubleshooting.</p>

Brigii
Mini Vacuum
User Guide
Y120 Pro



Before using the product, please read the user guide carefully, and strictly follow the requirements of the user guide after reading. Please keep it properly for future reference.

Brigii

Important safety instructions

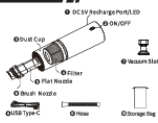
TO AVOID SAFETY ACCIDENTS OR MACHINE FAILURE, BASIC SAFETY PRECAUTIONS SHOULD ALWAYS BE FOLLOWED BEFORE USING YOUR BRIGII CORELESS VACUUM CLEANER, INCLUDING THE FOLLOWING:

1. Please use this product as a toy. Be sure to pay attention when it runs up or stops. It. Please not after the children and make sure they follow your supervision as they.
2. Keep your hair, loose clothing, fingers and body parts away from moving parts such as the cordless or motor and make sure to not get in the way of the cordless or motor. Do not touch the motor or plug in the mouth.
3. Do not put hands in the machine or inside. Never use the machine when the plug is plugged, remove dust, cotton, hair, or other items that may get in the way.
4. Turn off the vacuum cleaner before removal or installation of the filter.
5. The filter should be changed at least once a month, and should be changed in a time when there is no dust on the filter.
6. The vacuum cleaner shall not be operated when the filter is not installed properly.
7. Before use, check the filter for proper installation or damage.
8. Avoid use, approaching high temperature objects, and disassemble the unit.
9. Do not use with any liquids or particles.
10. It is forbidden to smoke, charge objects, burning or spray objects (such as guns, other PVC, sprayers, or metal paint, etc.).
11. Please do not tamper with the internal wiring.

2

Brigii

Product Diagram



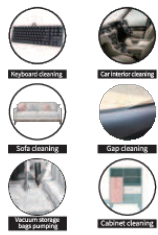
Product Specifications

Product Name	Mini Vacuum	Model Number	Y120 Pro
Charging Voltage	DC 5V	Battery Capacity	2500mAh
Charging Current	100mA	Product Weight	0.4kg
Rated Power	20W	Dimensions	240x120x120mm

2

Brigii

Main Usage



3

Function Description

1. Power switch: Press and hold to turn on, and press it again to turn off.
2. Nozzle: Three nozzles are available for replacement.
3. Positive maintenance: Nozzle to open the dust cap and take out the dust which will cause the dust.
4. When it is working or charging, it will play a red light. When it is fully charged, it will play a green light.

Troubleshooting

(Turn off the power before troubleshooting)

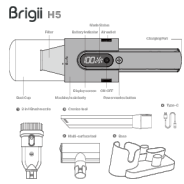
1. If the unit does not start, please check if the battery is fully charged. If the battery is fully charged, please check if the power switch is turned on. If the power switch is turned on, please check if the power switch is turned on.
2. In case of reduced suction, check if the suction port or filter is clogged.
3. If the motor fails to operate, check if the switch is pressed or there is no power.

4

Brigii
Website: www.brigii.com
Email: support@brigii.com

[Brigii Y120 Pro Mini Vacuum, Air Duster & Hand Pump User Guide](#)

User guide for the Brigii Y120 Pro, a 3-in-1 Mini Vacuum, Air Duster, and Hand Pump. Details safety, features, specifications, usage, maintenance, and troubleshooting.



[Brigii H5 Handheld Vacuum Cleaner User Manual and Maintenance Guide](#)

This document provides a comprehensive guide to operating and maintaining the Brigii H5 handheld vacuum cleaner. It covers features, operation modes, charging, cleaning, and filter maintenance.

Brigii

Cordless Vacuum Cleaner

User Guide

Y120



Before using the product, please read this user guide carefully, and strictly follow the instructions of the user guide after reading. Please read it properly for future reference.

Important safety instructions

TO AVOID SAFETY ACCIDENTS OR MACHINE FAILURE, BASIC SAFETY PRECAUTIONS SHOULD ALWAYS BE FOLLOWED WHEN USING YOUR BRIGII CORDLESS VACUUM CLEANER, INCLUDING THE FOLLOWING:

- 1 Never use this product as a toy. Be aware of any children when children are around it. Please take care after the children and inform them they will not use this product as a toy.
- 2 Never use wet hand, loose clothing, bagged and loose parts, keep them from coming loose as well as the risk of the air intake and brush rolls. Do not touch the brush rolls and do not touch the side of the motor body.
- 3 Do not put items in the mouth of the motor. Never use the machine to clean the mouth of a baby or animal, or clean the face of a child.
- 4 Turn off the vacuum cleaner before removal or installation of the filter.
- 5 The filter should be cleaned at least once a month, and should be changed up to three times when there is a strong odor on the filter.
- 6 The vacuum cleaner shall not be connected when the filter is not installed properly.
- 7 Before using, check the filter for proper installation or damage.
- 8 Do not use the vacuum cleaner to clean hot or sharp objects, and do not expose it to light.
- 9 Contact with any liquid is prohibited.
- 10 Do not use the vacuum cleaner to clean or spray objects such as glass, or hot liquids, or sharp objects, or overheat objects.
- 11 These other three precautions are prohibited from opening it for repair or making the machine.

Product Diagram



Product Specifications

Product Name	Cordless Vacuum Cleaner	Model Number	Y120
Charging Voltage	21.6V	Motor Capacity	2000W/1.2A
Charging Current	1.20A	Product Net Weight	1.0kg/2.2lb
Rated Power	200W	Dimensions	350x150x200mm

Main Usage



Function Descriptions

- 1 Power switch: Press and hold to turn on, and press to turn off.
- 2 Motor: Three modes are available for replacement.
- 3 Dust cup: Motor body: Rotate to open the dust cup and take out the dust, wash with water and dry it.
- 4 Charging indicator light: When the battery is used up, the red light flashes twice. When charging, the red light flashes twice. The red light will flash continuously when the battery is in a charging state. (Red light will flash twice when the battery is in a charging state.)

Troubleshooting

- (Turn off the power before troubleshooting)
- 1 If during use, the power is turned off, the filter may not be placed, causing the motor to stop. Immediately turn off the power, remove the filter, and replace the filter.
 - 2 In case of red light, check if the suction port or filter is clogged.
 - 3 If the motor has stopped, check if the switch is pressed or there is no power.

Brigii
Website: www.brigii.com
Email: support@brigii.com

[Brigii Y120 Cordless Vacuum Cleaner User Guide](#)

User guide for the Brigii Y120 Cordless Vacuum Cleaner, detailing important safety instructions, product diagram, specifications, main usage scenarios, function descriptions, and troubleshooting tips.