

Bear ZDH-C17V3

Bear 1.7L Stainless Steel Kettle User Manual

Model: ZDH-C17V3

1. INTRODUCTION

Thank you for purchasing the Bear 1.7L Stainless Steel Kettle. This appliance is designed for efficient water heating with precise temperature control and safety features. Please read this manual thoroughly before first use to ensure proper operation and maintenance.

2. IMPORTANT SAFETY INSTRUCTIONS

When using electrical appliances, basic safety precautions should always be followed, including the following:

- Read all instructions before use.
- Do not touch hot surfaces. Use handles or knobs.
- To protect against fire, electric shock, and injury to persons, do not immerse cord, plugs, or the kettle base in water or other liquid.
- Close supervision is necessary when any appliance is used by or near children.
- Unplug from outlet when not in use and before cleaning. Allow to cool before putting on or taking off parts, and before cleaning the appliance.
- Do not operate any appliance with a damaged cord or plug, or after the appliance malfunctions or has been damaged in any manner.
- The use of accessory attachments not recommended by the appliance manufacturer may result in fire, electric shock, or injury to persons.
- Do not use outdoors.
- Do not let cord hang over edge of table or counter, or touch hot surfaces.
- Do not place on or near a hot gas or electric burner, or in a heated oven.
- Always attach plug to appliance first, then plug cord into the wall outlet. To disconnect, turn any control to 'off', then remove plug from wall outlet.
- Do not use appliance for other than intended use.
- Always ensure the lid is securely closed during operation.
- Do not fill above the 'MAX' line or below the 'MIN' line indicated inside the kettle.
- This appliance is for household use only.

3. PRODUCT OVERVIEW

Familiarize yourself with the components of your Bear kettle.



Image 1: The Bear 1.7L Stainless Steel Kettle, showing its sleek black design, handle, digital display, and power cord. The display shows '100' and buttons for 'Keep Warm' and 'Boil Water'.

- **Kettle Body:** Double-layered 304 stainless steel interior for safety and anti-scald exterior.
- **Lid:** One-touch opening mechanism.
- **Handle:** Ergonomically designed for comfortable pouring.
- **Digital Display:** High-resolution LED display showing current temperature and settings.
- **Control Buttons:** 'Keep Warm' and 'Boil Water' buttons for function selection.
- **Power Base:** 360-degree swivel base with integrated cord storage.



Image 2: Close-up view of the kettle's interior, highlighting the one-piece seamless stainless steel lining. A 'BPA Free' label is visible, indicating the absence of harmful plastics in contact with water.

4. SETUP

1. **Unpack:** Carefully remove the kettle and all accessories from the packaging.
2. **Clean:** Before first use, fill the kettle with clean water to the maximum level, boil it, and then discard the water. Repeat this process 2-3 times to remove any manufacturing residues.
3. **Placement:** Place the power base on a stable, flat, heat-resistant surface, away from the edge of the counter.
4. **Connect Power:** Plug the power cord into a grounded electrical outlet. Ensure the voltage matches your local power supply (220V).

5. OPERATING INSTRUCTIONS

The Bear kettle offers versatile heating options for various needs.



Image 3: A user pouring hot water from the Bear kettle into a white mug, demonstrating its ease of use for beverages.

5.1 Filling the Kettle

- Press the lid release button to open the lid.
- Fill the kettle with fresh water. Do not fill below the MIN mark or above the MAX mark.
- Close the lid securely until it clicks.
- Place the kettle firmly on its power base.

5.2 Boiling Water (100°C)

- With the kettle on the base, press the '**Boil Water**' button.
- The digital display will show '100' and the kettle will begin heating the water to 100°C.
- Once 100°C is reached, the kettle will automatically shut off.

5.3 Keep Warm Function (40°C - 90°C)

The kettle offers 11 temperature options for keeping water warm.

11 Temperatures Keeping + 100°C Boiling points

40-90°C range to meet your different temperature needs



Image 4: The Bear kettle displaying a temperature scale ranging from 40°C to 100°C, illustrating the 11 available temperature settings for precise heating.



Image 5: A detailed view of the kettle's control panel, explaining three modes: Mode 1 (Keep Warm only), Mode 2 (Boil Water only), and Mode 3 (Boil to 100°C then Keep Warm).

- **Mode 1: Heat and Keep Warm (Specific Temperature)**

Press the '**Keep Warm**' button repeatedly to cycle through the desired temperature (40°C, 45°C, 50°C, 55°C, 60°C, 65°C, 70°C, 75°C, 80°C, 85°C, 90°C). The kettle will heat the water to the selected temperature and maintain it for up to 12 hours.

- **Mode 2: Boil Water Only**

Press the '**Boil Water**' button. The kettle will boil water to 100°C and then automatically shut off without engaging the keep-warm function.

- **Mode 3: Boil to 100°C then Keep Warm**

First, press the '**Boil Water**' button. Once the water reaches 100°C, immediately press the '**Keep Warm**' button and select your desired temperature. The kettle will cool down to the selected temperature and then maintain it for up to 12 hours.

5.4 Additional Features

- **90-Second Memory:** If you lift the kettle from its base during the keep-warm function, it will remember the setting for 90 seconds. When placed back on the base within this time, it will resume the keep-warm function without needing to re-adjust.
- **One-Touch Lid Opening:** The lid opens with a single touch, preventing direct contact with steam and protecting your hands.

- **Cord Storage:** The power base features integrated cord storage for a tidy countertop.

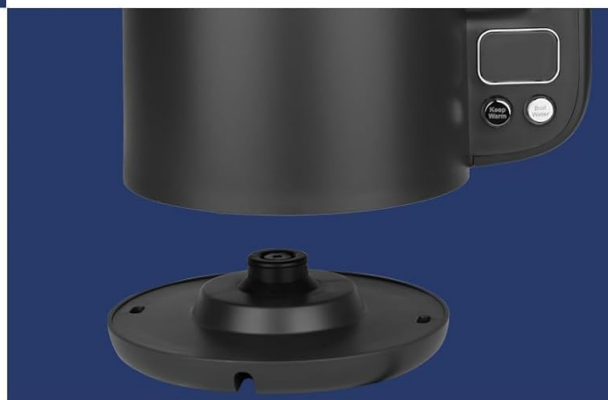


Storing the power cord

Space saving and easy to store

90-second memory for pot lifting

Pick up and set down when keeping warm, no need to re-adjust adjustment necessary



Opening the lid with one touch

Prevents burns and protects your hands

Image 6: Visual representation of key features: power cord storage under the base, the 90-second memory function when lifting the pot, and the one-touch lid opening mechanism for safety and convenience.

6. MAINTENANCE AND CLEANING

Regular cleaning ensures optimal performance and extends the life of your kettle.

- **Always unplug** the kettle from the power outlet and allow it to cool completely before cleaning.
- **Exterior Cleaning:** Wipe the exterior of the kettle with a soft, damp cloth. Do not use abrasive cleaners or scouring pads, as they may scratch the surface.
- **Interior Cleaning (Descaling):** Over time, mineral deposits (limescale) may build up inside the kettle, especially in hard water areas. To descale:
 - a. Fill the kettle with a mixture of one part white vinegar and two parts water.
 - b. Boil the mixture and let it stand for at least 30 minutes, or longer for heavy scale.
 - c. Pour out the mixture and rinse the kettle thoroughly with fresh water several times.
 - d. For stubborn deposits, a non-abrasive descaling solution designed for kettles can be used following the product's instructions.

- **Do not immerse** the kettle body or power base in water or any other liquid.

7. TROUBLESHOOTING

If you encounter any issues, please refer to the following common problems and solutions:

Problem	Possible Cause	Solution
Kettle does not turn on.	No power supply; Kettle not properly seated on base.	Check if the power cord is plugged in; Ensure the kettle is correctly placed on the power base.
Water not heating.	Insufficient water; Kettle has automatically shut off.	Ensure water level is above MIN mark; Restart the heating cycle.
Kettle shuts off too soon.	Limescale buildup; Overheating protection activated.	Descale the kettle; Ensure proper ventilation around the base.
Water has an unusual taste.	First-time use residues; Limescale buildup.	Perform initial cleaning (boil and discard water); Descale the kettle.

If the problem persists after trying these solutions, please contact customer support.

8. SPECIFICATIONS





Feature	Detail
Brand	Bear
Model Number	ZDH-C17V3
Capacity	1.7 Liters
Power	1800 Watts
Voltage	220 Volts
Material	Stainless Steel
Color	Dark Grey
Dimensions (L x W x H)	21.5 x 15.5 x 26 cm
Weight	1.14 Kilograms
Special Features	Digital Control, Double Wall, Automatic Shut-off, Strix Thermostat Technology

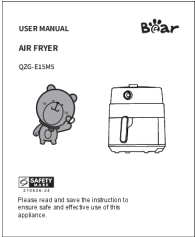

9. WARRANTY AND SUPPORT

This product comes with a standard manufacturer's warranty. For detailed warranty information, please refer to the warranty card included in the product packaging or contact your retailer.

For technical support, troubleshooting assistance, or spare parts inquiries, please contact Bear customer service through the contact information provided with your purchase or on the official Bear website.

Related Documents - ZDH-C17V3

	<p>Bear Electric Health Multi-Function Kettle 1.5L YSH-A15W6 User Manual and Guide</p> <p>Comprehensive user manual for the Bear Electric Health Multi-Function Kettle (Model YSH-A15W6). Learn about its features, parts, safe operation, cleaning, descaling, specifications, and warranty. This 1.5L kettle offers 20 preset functions for various beverages and food preparations.</p>
	<p>Bear Electric Health Multi-Function Kettle 1.8L YSH-B18A6 User Manual, Operation Guide, and Specifications</p> <p>Detailed user manual for the Bear Electric Health Multi-Function Kettle 1.8L (Model YSH-B18A6). Includes safety warnings, operating instructions, cleaning and descaling guides, a list of functions, technical specifications, and warranty information from PowerPac Electrical Pte Ltd.</p>
	<p>Bear Yogurt Maker SNJ-C10T1: Instructions for Use and Guide</p> <p>Detailed instructions and guide for the Bear SNJ-C10T1 Yogurt Maker. Learn how to make homemade yogurt, Greek yogurt, and more with this automatic digital appliance. Includes component breakdown, step-by-step usage, helpful tips, safety precautions, troubleshooting, and warranty information.</p>
	<p>Bear Food Chopper QSJ-D03Q1 User Manual</p> <p>User manual for the Bear Food Chopper, model QSJ-D03Q1. Provides instructions, safety precautions, operating guidelines, cleaning, and troubleshooting for this kitchen appliance.</p>

	<p>Bear Air Fryer QZG-E15M5 User Manual</p> <p>User manual for the Bear Air Fryer model QZG-E15M5, providing instructions on safe operation, preparation, usage, cleaning, storage, and troubleshooting for this household appliance.</p>
	<p>Bear JSQ-F60A4 Humidifier: User Manual, Safety, and Operation Guide</p> <p>Get detailed instructions for your Bear JSQ-F60A4 humidifier. Learn about safe operation, assembly, cleaning, maintenance, and troubleshooting tips. This manual covers important safety precautions and technical specifications for optimal use.</p>