

Manuals+

[Q & A](#) | [Deep Search](#) | [Upload](#)

manuals.plus /

› [SMALLRIG](#) /

› [SMALLRIG Handheld Cage Kit for Sony FX30 FX3 User Manual](#)

SMALLRIG 4184

SMALLRIG Handheld Cage Kit for Sony FX30 FX3 User Manual

Model: 4184

1. PRODUCT OVERVIEW

The SMALLRIG Handheld Cage Kit for Sony FX30 / FX3 (Model 4184) is a modular accessory designed to enhance the functionality and protection of your camera. It features a robust U-shaped cage module and a top slider module, providing multiple mounting points for various accessories while maintaining access to camera controls and ports.

This kit includes essential components such as an XLR handle extension, a dedicated HDMI cable clamp, and a hand strap, all designed to improve handling stability and protect critical connections during professional video production.

Key Features:

- **Modular Design:** Composed of a top slider module and a U-shaped cage module for flexible configuration.
- **Enhanced Grip:** XLR handle extension improves comfort and provides additional mounting points.
- **Cable Protection:** Dedicated HDMI cable clamp secures the cable and prevents accidental disconnection.
- **Multiple Mounting Points:** Features 1/4"-20 threaded holes, ARRI locating holes, NATO rail, and cold shoe mounts for extensive accessory compatibility.
- **Quick Release Compatibility:** Integrated Arca-Swiss compatible plate for fast transitions between tripod and stabilizer setups.
- **Ergonomic and Protective:** Designed with an opening/closing key for the battery compartment and protective gaskets to prevent camera scratches.

2. PACKAGE CONTENTS

Please verify that all items listed below are included in your package:

- 1 x Cage
- 2 x NATO Rail
- 1 x HDMI Cable Clamp
- 1 x XLR Handle Extension Rig
- 1 x Hand Strap
- 2 x 1/4"-20 Screw
- 1 x Allen Wrench

Package Includes

- Cage × 1
- NATO Rail × 2
- HDMI Cable Clamp × 1
- XLR Handle Extension Rig × 1
- Hand Strap × 1
- 1/4"-20 Screw × 2
- Allen Wrench × 1



Specifications

Brand

SmallRig

ID

4184

Net Weight

318 ± 5g

Compatibility

For Sony FX30 / FX3

Product Dimensions

159.0 × 118.0 × 165.0mm

Package Dimensions

180.0 × 129.5 × 78.0mm

Figure 2.1: All components included in the SMALLRIG Handheld Cage Kit (Model 4184).

3. SETUP AND INSTALLATION

Follow these steps to properly install the cage kit onto your Sony FX30 or FX3 camera.

3.1 Attaching the Cage Module

1. Align the U-shaped cage module with your Sony FX30/FX3 camera body.
2. Secure the cage module using the 1/4"-20 screws on both sides and the bottom of the camera. Ensure the screws are tightened firmly with the provided Allen wrench to prevent deflection.
3. Verify that the battery compartment opening/closing key on the cage aligns with the camera's battery door for easy access.



Figure 3.1: The SmallRig cage kit securely mounted on a Sony FX30/FX3 camera, showing the overall setup.

3.2 Installing the Top Slider Module and XLR Handle Extension

1. Attach the top slider module to the camera's top plate using the two 1/4"-20 screws.
2. If using the original Sony XLR handle, first remove the top slider module. The XLR handle extension rig can then be attached to the original XLR handle, extending it by 30mm for improved grip and additional mounting points.
3. The NATO rail can be attached to the top slider module for flexible application of accessories like monitor mounts or top handles.

NATO Rail Module for Flexible Application

* The NATO rail is fully aligned at the cameras' holes, making it directly mounted onto the top of FX30 / FX3



Available to attach the monitor mount, top handles, etc. after installation



Compatible for Sony XLR Audio Handle after removing the NATO rail

Figure 3.2: Illustration of the NATO Rail Module, demonstrating its use for attaching accessories and compatibility with the Sony XLR Audio Handle.

Included Accessories for Added Versatility



Extension Rig for Sony XLR Audio Handle

Built for comfortable grip and equipped with accessories mounts

Dedicated HDMI Cable Clamp

Protects the cables and ensures stable signal transmission

Hand Strap

Increase stability and safety

Figure 3.3: Overview of included accessories such as the XLR handle extension, dedicated HDMI cable clamp, and hand strap, highlighting their functions.

3.3 Attaching the HDMI Cable Clamp

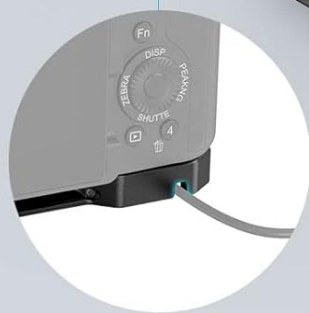
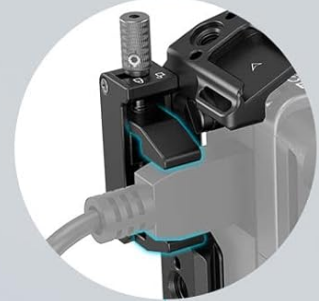
Secure the HDMI cable clamp to the cage to protect the camera's HDMI port and ensure stable signal transmission. This clamp prevents accidental disconnections during shooting.

Precise Holes & Accurate Calibration

Hinge Arm



Included HDMI Cable Clamp



Cutouts for Power Cable



Figure 3.4: Detailed view of the HDMI cable clamp, hinge arm, and power cable cutouts, illustrating the precise design for camera integration.

3.4 Attaching the Hand Strap

Thread the hand strap through the reserved holes on the side of the cage. This strap enhances stability during handheld shooting and helps prevent accidental drops.

4. OPERATING INSTRUCTIONS

The SMALLRIG Handheld Cage Kit is designed to provide versatile mounting options and improved handling for your camera setup.

4.1 Utilizing Mounting Points

The cage features various mounting points for attaching additional accessories:

- **1/4"-20 Threaded Holes:** Use these for attaching accessories such as the SmallRig Magic Arm 3873.

- **ARRI Locating Hole:** Compatible with accessories like the SmallRig Top Handle 3765/2165C or Monitor Mount 2903B.
- **NATO Rail:** Located on the side, this rail allows for quick attachment and detachment of accessories like the SmallRig Side Handle 3813.
- **Cold Shoe:** Integrated cold shoe mount for microphones, LED video lights, or other cold shoe compatible accessories.
- **1/4"-20 Positioning Holes:** On the top left corner and left side, these can secure a rod clamp (e.g., SmallRig 3598) for follow focus systems.
- **Vertical Shooting:** Two 1/4"-20 holes on the side allow attachment of a quick release plate to prevent deflection during vertical shooting.



Figure 4.1: Detailed diagram illustrating the multiple mounting points available on the cage, including threaded holes, cold shoe, ARRI locating hole, and NATO rail.

4.2 Quick Release System

The bottom QR plate is compatible with Arca-Swiss systems, including DJI RS 2, RSC 2, RS 3, RS 3 Pro, and SmallRig

Arca Plate 3154. This allows for rapid transitions between tripod and handheld or stabilizer setups.



Figure 4.2: Visual representation of the quick release system, enabling seamless transitions between tripod and stabilizer shooting modes.

5. MAINTENANCE AND CARE

To ensure the longevity and optimal performance of your SMALLRIG Handheld Cage Kit, follow these maintenance guidelines:

- **Cleaning:** Wipe the cage and accessories with a soft, dry cloth after each use to remove dust and fingerprints. For stubborn dirt, use a slightly damp cloth and then dry thoroughly. Avoid abrasive cleaners or solvents.
- **Storage:** Store the kit in a dry, cool place away from direct sunlight and extreme temperatures. If disassembling, keep all screws and small parts organized to prevent loss.
- **Inspection:** Periodically check all screws and connections for tightness. Re-tighten as necessary to maintain stability. Inspect for any signs of wear or damage, especially on moving parts or threaded areas.
- **Surface Finish:** Due to the manual grinding technology used in manufacturing, slight wear marks on the surface are normal and do not affect product functionality.

6. TROUBLESHOOTING

This section addresses common issues you might encounter with your SMALLRIG Handheld Cage Kit.

6.1 Compatibility Issues with Top Slider Accessories

Problem: Accessories do not fit the 1/4"-20 holes on the top slider module.

Solution: The spacing between the 1/4"-20 holes on the top slider is 27mm. This module is not compatible with accessories that have an 18mm spacing. Ensure your accessories match the 27mm spacing for proper fitment.



Figure 6.1: Important note regarding the 27mm spacing of the 1/4"-20 holes on the top slider, indicating incompatibility with 18mm spaced accessories.

6.2 Difficulty Attaching Original Sony XLR Handle

Problem: The original Sony XLR handle cannot be attached to the camera with the cage kit installed.

Solution: If you intend to use the original Sony XLR handle, you must first remove the top slider module from the cage. The XLR handle extension rig included in this kit is designed to work with the original XLR handle after the top slider is removed.

6.3 Loose Cold Shoe Mount

Problem: Accessories attached to the cold shoe mount feel loose or fall out.

Solution: The cold shoe on the cage is a standard fit. Some accessories, like the DJI Mic 2 RX, may require a cold shoe mount that has a locking mechanism or can be tightened down to secure the accessory. Ensure your accessory has a secure fitting mechanism or consider adding a cold shoe adapter with a locking feature.

7. SPECIFICATIONS

Attribute	Value
Brand	SMALLRIG
Model Number	4184
Compatibility	Sony FX30 / FX3
Color	Black
Item Weight	195 Grams
Product Dimensions (L x W x H)	15.9 x 10.1 x 6.6 cm
Package Dimensions (L x W x H)	18.2 x 13.4 x 7.9 cm
Maximum Weight Recommendation	318 Grams

8. WARRANTY AND SUPPORT

SMALLRIG products are designed for durability and performance. For warranty information, technical support, or service inquiries, please visit the official SMALLRIG website or contact their customer service directly.


Official Website: www.smallrig.com






Please retain your proof of purchase for any warranty claims.

© 2024 SMALLRIG. All rights reserved.

This manual is for informational purposes only. Specifications are subject to change without notice.

Related Documents - 4184

	<p>SmallRig NATO Top Handle (Lite) Operating Instructions Operating instructions for the SmallRig NATO Top Handle (Lite), detailing its features, compatibility, safety guidelines, and specifications for the Sony FX30/FX3 XLR Handle.</p>
---	--

	<p>SmallRig Universal Tripod Dolly CCP2646 Camera Cage - Operating Instructions Operating instructions and specifications for the SmallRig Universal Tripod Dolly CCP2646 camera cage, designed for Panasonic Lumix GH5, GH5 II, and GH5S cameras. Features include protection, accessory mounting, and safety guidelines.</p>
	<p>SmallRig HawkLock Quick Release Cage Kit for Sony FX3/FX30 - Operating Instructions and Specifications Detailed operating instructions, specifications, and compatibility information for the SmallRig HawkLock Quick Release Cage Kit designed for Sony FX3 and FX30 cameras. Includes parts lists and installation guides.</p>
	<p>SmallRig USB-C & MULTI Cable Clamp for Sony FX2 Cages - Operating Instructions Official operating instructions for the SmallRig USB-C & MULTI Cable Clamp designed for cages compatible with the Sony FX2 camera. This guide details installation steps, safety precautions, product specifications, and manufacturer information.</p>
	<p>SmallRig HDMI & USB-C Cable Clamp for Canon EOS R50 V Cage - Operating Instructions Operating instructions for the SmallRig HDMI & USB-C Cable Clamp designed for the Canon EOS R50 V Cage. Includes installation steps, specifications, and manufacturer details.</p>
	<p>SmallRig 3764 Top Handle with Cold Shoe (Lite) - Operating Instructions and Specifications Get detailed operating instructions and specifications for the SmallRig 3764 Top Handle with Cold Shoe (Lite). Learn about its ergonomic design, multiple mounting points (cold shoe, ARRI, 1/4-20), safety guidelines, and compatibility for professional camera setups.</p>