

Manuals+

[Q & A](#) | [Deep Search](#) | [Upload](#)

Manuals.plus /

› [LUDOMIDE](#) /

› LUDOMIDE Ceiling Fan with Lights User Manual

LUDOMIDE CFL-1105-01

LUDOMIDE Flush Mount Ceiling Fan with Lights User Manual

Model: CFL-1105-01

Brand: LUDOMIDE

1. INTRODUCTION

Thank you for choosing the LUDOMIDE Flush Mount Ceiling Fan with Lights. This modern and versatile ceiling fan is designed to provide optimal air circulation and adjustable lighting for various rooms, including bedrooms, kids' rooms, and living rooms. Featuring 6 wind speeds, timing functions, reversible wind direction, and a dimmable LED light, this fan offers comfort and convenience year-round. Please read this manual thoroughly before installation and operation to ensure safe and efficient use.



Figure 1: LUDOMIDE Flush Mount Ceiling Fan with Lights.

2. SAFETY INFORMATION

- Always turn off the power at the circuit breaker before installation, cleaning, or maintenance.
- Installation should be performed by a qualified electrician to ensure proper wiring and safety.
- Ensure the mounting structure can support the weight of the fan.
- Do not insert objects into the fan blades while the fan is operating.
- Keep children away from the fan during operation and maintenance.
- This product is for indoor use only and is not water resistant.

3. INCLUDED COMPONENTS

The LUDOMIDE Ceiling Fan package includes the following items:

- 1 x Ceiling Fan with Lights
- 1 x Remote Control
- Mounting Hardware
- Instruction Manual (this document)

4. SPECIFICATIONS

Feature	Detail
Brand	LUDOMIDE
Model Name	Ceiling Fan
Model Number	CFL-1105-01
Color	Black-1105
Material	Iron
Product Dimensions	20"L x 20"W x 6"H
Wattage	52 watts (Fan), 37W LED (Light)
Voltage	120 Volts
Control Method	Remote Control / APP
Light Type	Dimmable LED (3000K-6000K, 10%-100% brightness)
Fan Speeds	6 Speeds
Special Features	Reversible Wind, Timing Function, Memory Function
Noise Level	Less than 35 decibels



PARAMETER

WATTAGE :	52W	DIMMABLE :	Yes
FAN BLADE :	5 Blades	LIGHT :	37W LED
ROOM SIZE :	95 -218 sqft	CONTROL :	Remote/App/Wall

Figure 2: Product dimensions and key specifications.



DC 100% COPPER MOTOR

POWERFUL & ENERGY SAVING

Ultra Quiet < **35**dB



Figure 3: DC 100% Copper Motor ensures powerful and quiet operation (less than 35dB).

5. SETUP AND INSTALLATION

Installation of the LUDOMIDE Ceiling Fan requires electrical wiring knowledge. It is highly recommended to consult a qualified electrician for proper installation to ensure safety and compliance with local electrical codes.

For detailed step-by-step installation instructions, please refer to the official Installation Manual (PDF) provided with your product or download it from the following link:

[Download Installation Manual \(PDF\)](#)

Key installation features include a lightweight fixture and a design that simplifies the process compared to traditional ceiling fans. An S-hook is provided to assist with wiring connections during installation.

6. OPERATING INSTRUCTIONS

The LUDOMIDE Ceiling Fan can be controlled using the included remote control or a dedicated mobile application. Both methods offer comprehensive control over the fan and light functions.

6.1 Remote Control Functions



Figure 4: Overview of fan features controlled by remote and app.

- **Power On/Off:** Turn the fan and light on or off.
- **Light Control:**
 - **Dimmable LED:** Adjust brightness from 10% to 100%.
 - **Color Temperature:** Cycle through Warm (3000K), Neutral (4500K), and Cool White (6000K) lighting modes.
 - **Night Mode:** Activates a dim light setting.
 - **Memory Function:** The fan memorizes the last light setting when turned off with the remote, eliminating the need to reset it.

CEILING FAN WITH LED LIGHT

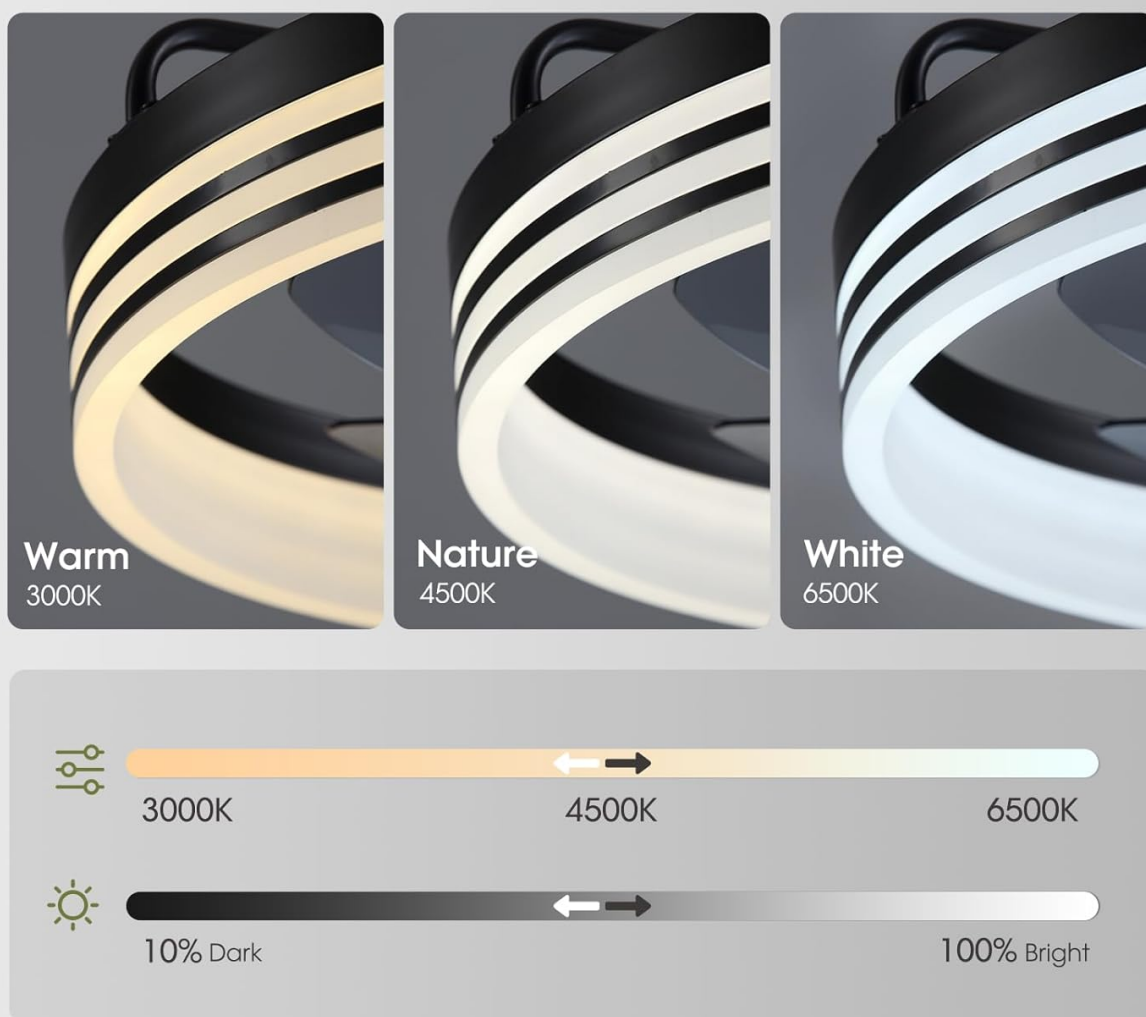


Figure 5: Dimmable LED light with adjustable color temperatures.

- **Fan Speed:** Select from 6 wind speeds (1-2: Soft Wind, 3-4: Natural Wind, 5-6: Cool Wind).
- **Reversible Wind:** Change the direction of airflow for year-round comfort. Downward airflow for cooling in summer, upward airflow for circulating warm air in winter.



Figure 6: Fan reverse function for seasonal use.

- **Timing Function:** Set a timer for 2 hours using the remote.

6.2 Mobile App Control

The fan can also be controlled via a mobile application, offering additional timing options and convenient control from your smartphone.

- **App Pairing:** Refer to the app's instructions for initial pairing with your fan.
- **Timing Function:** Set a timer for 1, 2, 4, or 8 hours via the app.
- All other functions (light, speed, reverse) are also available through the app interface.

Your browser does not support the video tag.

Video 1: Demonstration of the LUDOMIDE Ceiling Fan with Lights, showcasing its features and control options.

7. MAINTENANCE

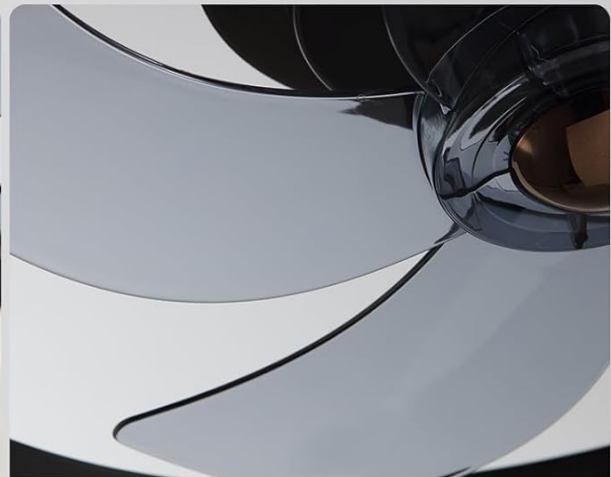
Regular maintenance ensures the longevity and optimal performance of your LUDOMIDE Ceiling Fan.

- **Cleaning:** Dust the fan and light fixture regularly with a soft, dry cloth. Do not use abrasive cleaners or solvents.
- **Blade Cleaning:** The PC fan blades can be gently wiped with a damp cloth if necessary. Ensure the fan is completely off and stationary before cleaning the blades.
- **Connections:** Periodically check all electrical connections and mounting hardware to ensure they are secure.
- **LED Light:** The integrated LED light is designed for long-term use and typically does not require replacement.

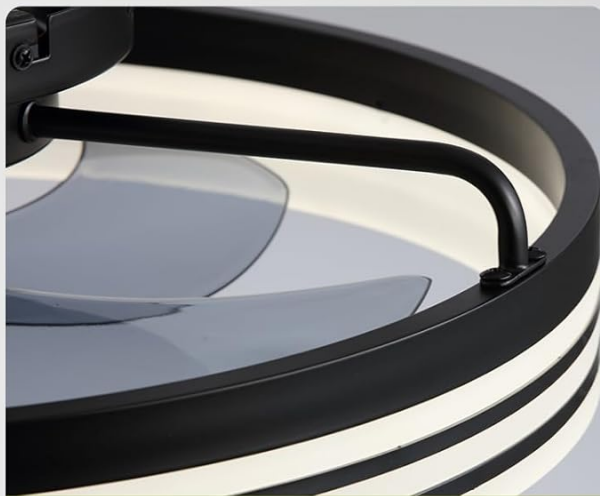
MODERN CEILING FAN DESIGN



Acrylic Lampshade



PC Fan Blades



Iron Frame



DC 100% Copper Motor

Figure 7: Close-up of fan components, highlighting durable materials.

8. TROUBLESHOOTING

If you encounter any issues with your LUDOMIDE Ceiling Fan, please refer to the following common troubleshooting steps:

Problem	Possible Cause	Solution
---------	----------------	----------

Fan does not operate.	No power, loose wiring, remote battery dead.	Check circuit breaker. Ensure all connections are secure. Replace remote battery.
Light does not turn on.	No power, loose wiring, LED malfunction.	Check power. Verify wiring. If LED is faulty, contact customer support.
Fan makes unusual noise.	Loose screws, unbalanced blades, motor issue.	Tighten all screws. Ensure blades are balanced. If noise persists, contact support.
Remote control not working.	Dead battery, remote not paired.	Replace battery. Refer to remote pairing instructions in the full manual.
Light color changes unexpectedly.	Power cycling from wall switch.	The light cycles through presets when turned off/on via a wall switch. Use the remote for consistent control.

If the problem persists after attempting these solutions, please contact LUDOMIDE customer support for assistance.

9. WARRANTY AND SUPPORT

The LUDOMIDE Ceiling Fan with Lights comes with a **1-year manufacturer's warranty**. This warranty covers defects in materials and workmanship under normal use.

For any questions, technical support, or warranty claims, please contact LUDOMIDE customer service through Amazon's messaging system. Our team is dedicated to providing satisfactory replies and assistance.

We value your feedback and are committed to providing the best quality products and service.