

## SECRUI D7

# SECRUI Wireless Door Chime System (Model D7)

Instruction Manual

### INTRODUCTION

Thank you for choosing the SECRUI Wireless Door Chime System. This system provides a reliable alert when a door or window is opened, suitable for various applications including homes, businesses, offices, and stores. It features easy installation, a wide operating range, and customizable chime options to enhance your security and convenience.

### PRODUCT OVERVIEW

#### Components

- Receiver (Plug-in unit)
- Door/Window Sensors (Battery-powered units)
- Mounting accessories (Double-sided adhesive tape, screws, screwdriver)

#### Key Features

- **Wireless Operation:** No wiring required for installation.
- **Extended Range:** Up to 500 feet (150 meters) in open areas.
- **Customizable Alerts:** 32 selectable ringtones and 5 adjustable volume levels (0-110dB).
- **Visual Indicator:** LED indicator on the receiver for visual alerts.
- **Memory Function:** Retains selected chime and volume settings after power loss.
- **Versatile Use:** Ideal for monitoring entry points, child safety, and intruder alerts.

# Product Size

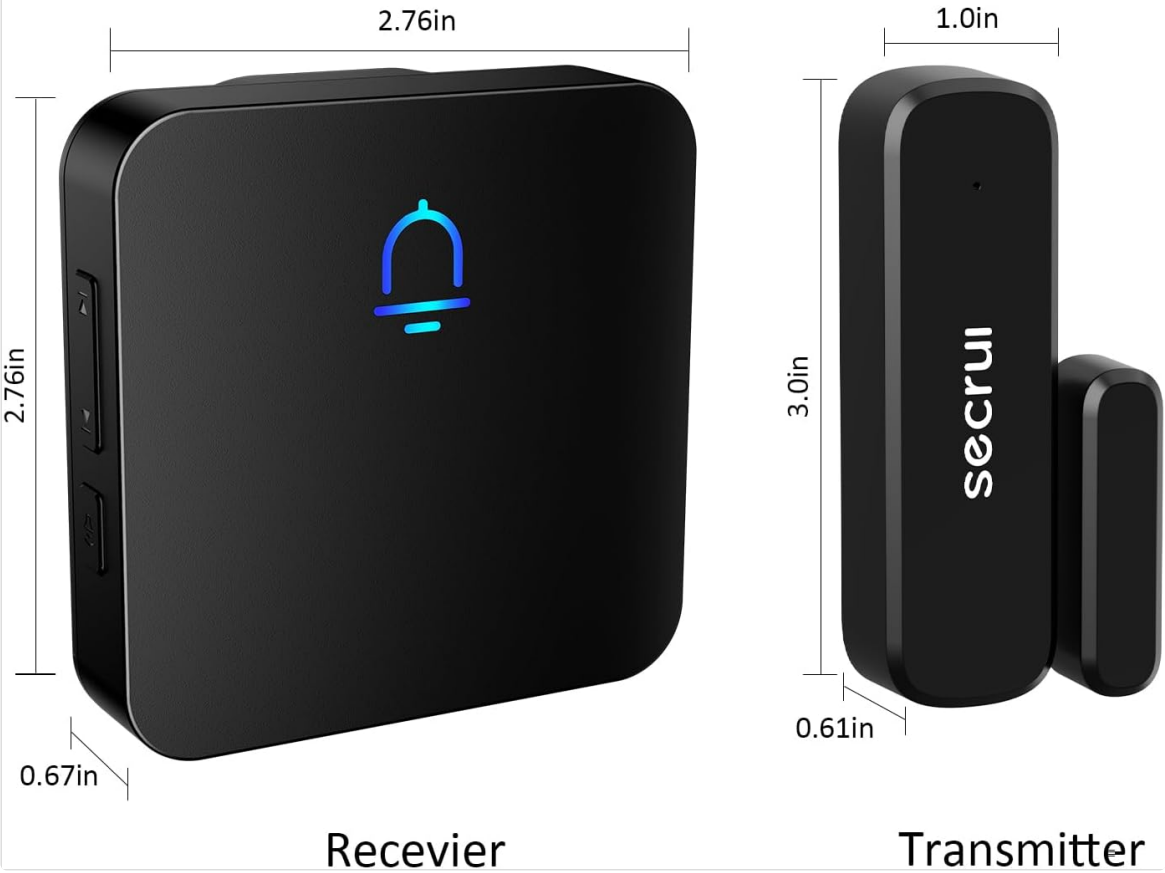


Figure 1: Included components of the SECRUI Wireless Door Chime System.



Figure 2: Product dimensions for the receiver and sensor units.

## SETUP INSTRUCTIONS

### 1. Sensor Installation

The door/window sensors consist of two parts: a main unit and a magnetic strip. These two parts must be aligned and placed within 10mm of each other on the door/window and its frame. When the door/window opens, separating the two parts, the sensor triggers the chime.

1. **Choose Location:** Select a clean, dry surface on your door/window and its frame where the two sensor parts can be mounted in close proximity when closed.
2. **Prepare Surface:** Clean the mounting area thoroughly to ensure optimal adhesion.
3. **Apply Adhesive:** Peel the backing from the double-sided adhesive tape and apply it to the back of both the main sensor unit and the magnetic strip.
4. **Mount Sensor:** Attach the larger main sensor unit to the door/window frame and the smaller magnetic strip to the moving part of the door/window. Ensure they are aligned and close enough (within 10mm) when the door/window is closed. Alternatively, use the provided screws for a more permanent installation.

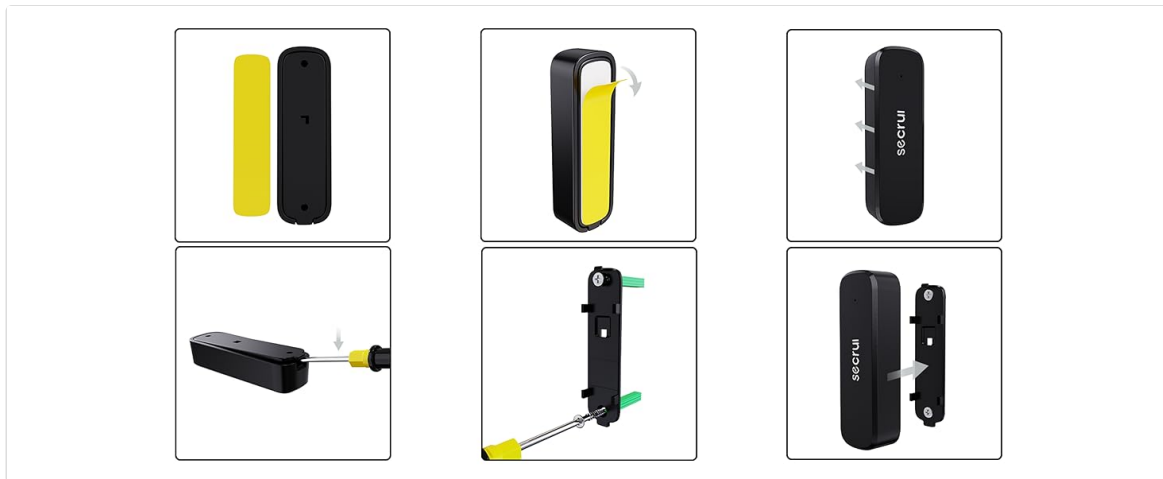


Figure 3: Detailed steps for sensor installation using adhesive or screws.

## 2. Receiver Placement

Plug the receiver into a standard electrical outlet in a central location within your home or business. Ensure it is within the 500ft operating range of the sensors.

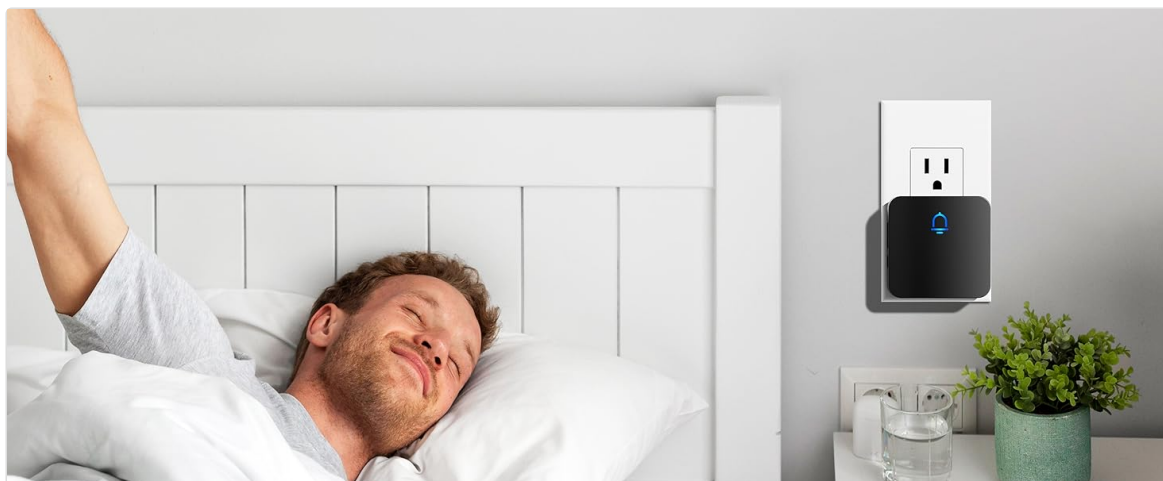


Figure 4: Receiver plugged into a wall outlet.

## 3. Pairing Sensors with Receiver

The sensors and receiver are typically pre-paired from the factory. If re-pairing is needed or if you add new sensors, follow these steps:

1. **Step 1:** Plug in the receiver. Press the volume button to adjust the volume.
2. **Step 2:** Change the tune. Press the up or down arrow buttons to loop through tones and select your desired music.
3. **Step 3:** Connect a door sensor. Long press the volume button for 5 seconds until the LED indicator light on the receiver turns blue.
4. **Step 4:** Move the magnetic strip (part B) away from the main sensor unit (part A). The receiver will beep twice with the LED indicator flashing once.
5. **Step 5:** Move the magnetic strip (part B) away from the main sensor unit (part A) again. The receiver will beep twice with the LED indicator flashing once, indicating successful pairing.

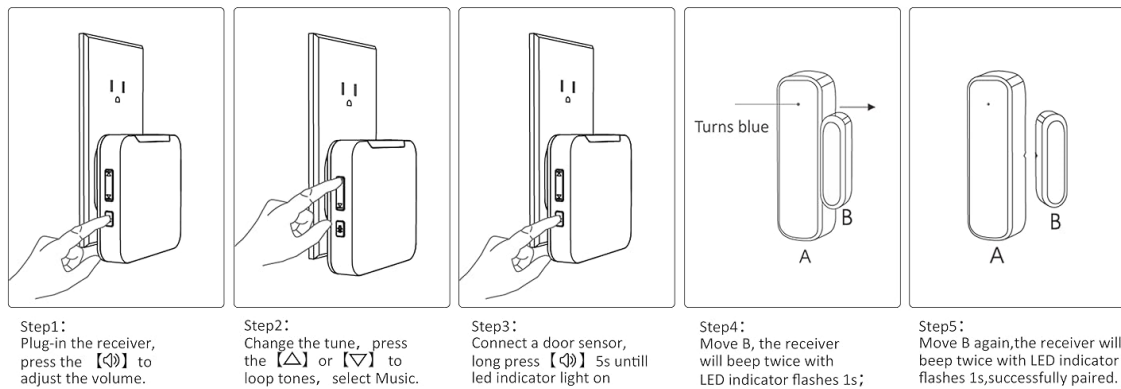


Figure 5: Pairing process for the sensor and receiver.

## OPERATING INSTRUCTIONS

### 1. Adjusting Volume

The receiver offers 5 levels of adjustable volume. Press the volume button on the side of the receiver to cycle through the volume settings until you reach your desired loudness. The maximum volume is 110dB, ensuring it can be heard in various environments.

### 2. Changing Ringtones

The system includes 32 distinct ringtones. Use the up and down arrow buttons on the receiver to browse and select your preferred chime. The receiver will play a preview of each tone as you cycle through them.

### 3. Usage Scenarios

Once installed and paired, the system will alert you whenever a monitored door or window is opened. This is useful for:

- **Home Security:** Notifying you of unauthorized entry.
- **Child Safety:** Alerting you if children open restricted doors or windows.
- **Business Entry:** Welcoming customers or alerting staff to new arrivals.
- **Pet Monitoring:** Knowing when pets might be exiting or entering certain areas.



Figure 6: Diverse applications of the SECURI Door Chime System.

Your browser does not support the video tag.

Video 1: An official product video demonstrating the SECURI Wireless Door Chime in action, showing how it alerts when a door is opened.

## MAINTENANCE

### Battery Replacement

The door sensors are powered by 1 AAA battery (included). When the sensor's LED indicator no longer flashes or the chime system fails to trigger upon opening, it is time to replace the battery.

1. **Open Sensor Casing:** Carefully open the sensor casing. This may require a small screwdriver or prying tool.
2. **Remove Old Battery:** Remove the exhausted AAA battery.
3. **Insert New Battery:** Insert a new AAA alkaline battery, ensuring correct polarity (+/-).
4. **Close Casing:** Securely close the sensor casing.
5. **Test Functionality:** Test the sensor by opening and closing the monitored door/window to ensure it triggers the receiver.



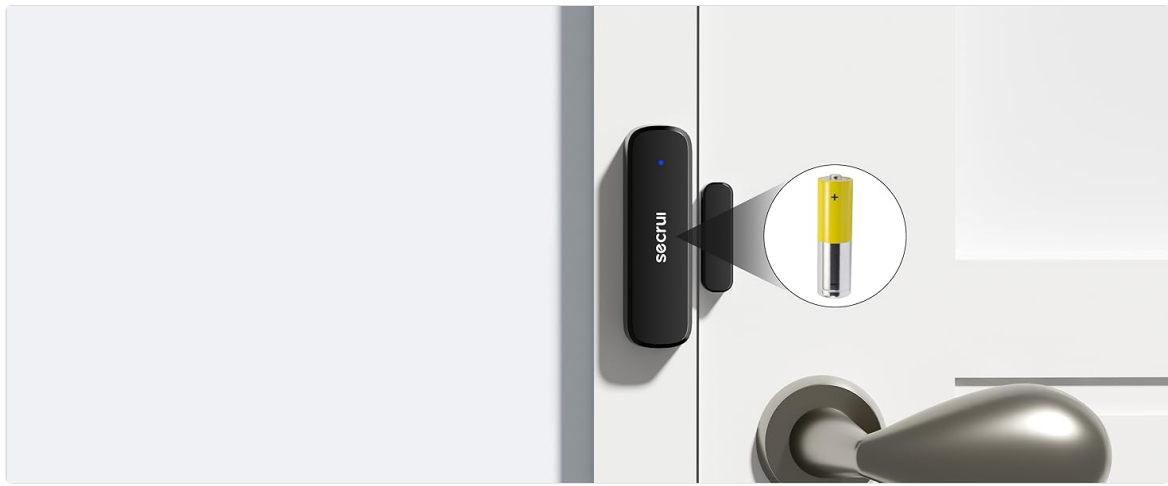


Figure 7: Battery compartment of the sensor unit.

## TROUBLESHOOTING

### • No Chime Sound:

- Ensure the receiver is plugged into a working power outlet.
- Check the sensor battery and replace if necessary.
- Verify that the sensor and receiver are properly paired (refer to Pairing Instructions).
- Ensure the sensor's two parts are aligned and within 10mm when the door/window is closed.
- Confirm the receiver volume is not set to silent (0dB).

### • Short Operating Range:

- Relocate the receiver to a more central position.
- Avoid placing the receiver or sensors near large metal objects or thick walls that may interfere with the wireless signal.
- Ensure there are no other strong wireless interference sources nearby.

### • False Alarms:

- Check the sensor alignment; ensure the two parts are securely mounted and do not shift.
- Verify that the gap between the sensor parts is not too wide when the door/window is closed.

## SPECIFICATIONS

Model Number	D7
Part Number	M5373+D037
Voltage	12 Volts (Receiver)
Power Source	Battery Powered (Sensor), AC Plug-in (Receiver)

<b>Sensor Battery Type</b>	1 AAA Alkaline battery (included)
<b>Control Method</b>	Touch buttons
<b>Mounting Type</b>	Door Mount (Sensor)
<b>Installation Method</b>	Self-Adhesive or Screws
<b>Maximum Range</b>	500 Feet (150 meters)
<b>Sensor Technology</b>	Contact Sensor
<b>Number of Ringtones</b>	32
<b>Volume Levels</b>	5 (0-110dB)
<b>Item Weight</b>	6.7 ounces (total package)
<b>Package Dimensions</b>	4.41 x 3.31 x 2.4 inches
<b>Color</b>	Black

## WARRANTY AND SUPPORT

### Warranty Information

Specific warranty details are not provided in the product information. Please refer to the product packaging or contact SECRUI customer service for warranty terms and conditions.

### Customer Support

For any questions, technical assistance, or support regarding your SECRUI Wireless Door Chime System, please contact SECRUI customer service through the retailer where the product was purchased or visit the official SECRUI website for contact information.