



Manuals.plus /

› **Monster** /

› Monster Platinum XP 16 AWG Speaker Wire - 50ft Instruction Manual

## Monster Platinum XP 16 AWG 50 FT

# Monster Platinum XP 16 AWG Speaker Wire - 50ft Instruction Manual

## 1. PRODUCT OVERVIEW

---

The Monster Platinum XP 16 AWG Speaker Wire is a high-performance audio cable designed to deliver clear, dynamic sound for your home theater or car audio system. This 50-foot spool features Oxygen-Free Copper (OFC) construction, a Magnetic Flux Tube design, and LPE Insulation to ensure optimal signal transfer and minimize interference.



Image 1.1: The Monster Platinum XP 16 AWG Speaker Wire on a 50ft spool.

Key features include:

- **16 Gauge Oxygen-Free Copper (OFC):** Enhances electrical conductivity for high-quality signal transmission.
- **Magnetic Flux Tube Design:** Contributes to more natural, crisp, and clear audio.
- **LPE Insulation:** Reduces dielectric signal loss for greater clarity and shields against interference.
- **Polarity Marks:** Facilitate correct connection for proper audio phasing.
- **Durable Plastic Jacket:** Provides resistance to overheating and physical wear.

## 2. SETUP AND INSTALLATION

---

Proper installation of your Monster Platinum XP speaker wire is crucial for achieving the best audio performance. Follow these steps for a secure and effective setup:

### 2.1 Preparing the Wire

1. **Measure and Cut:** Determine the required length of speaker wire for each speaker, ensuring enough slack for flexible placement without excessive length. Cut the wire using a wire cutter.
2. **Strip the Insulation:** Carefully strip approximately 1/2 inch (1.25 cm) of the outer plastic jacket from

both ends of the wire. **Important:** This speaker wire has two layers of insulation. Ensure both the outer jacket and the inner insulation around the copper strands are removed to expose the bare copper wire. Failure to remove both layers will prevent sound transmission.

3. **Twist Strands:** Gently twist the exposed copper strands of each conductor tightly to prevent stray wires.



Image 2.1: Preparing the speaker wire by stripping the insulation and twisting the copper strands.

## 2.2 Connecting to Components

Connect the prepared wire ends to your audio components (amplifier/receiver and speakers) using the appropriate terminals. The wire is marked with polarity (e.g., a stripe or text on one conductor) to ensure correct phasing.

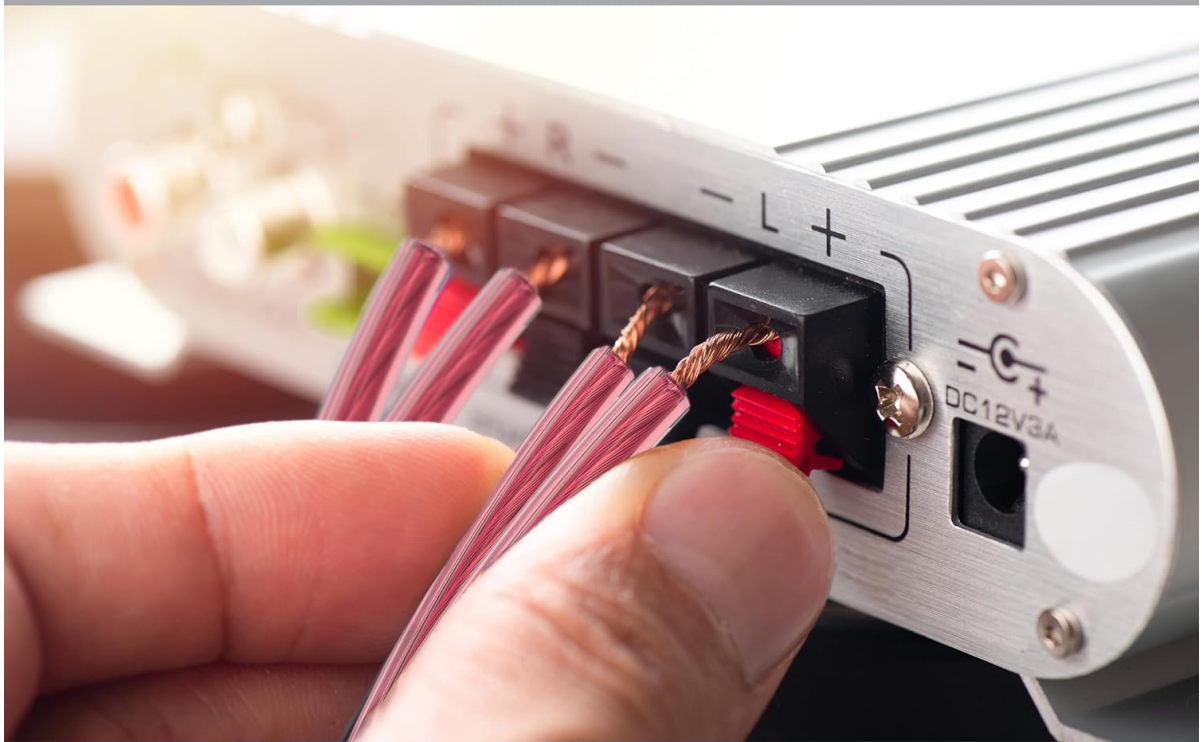
1. **Identify Polarity:** Match the marked conductor (positive, typically red or striped) to the positive (+) terminal on both your amplifier/receiver and speaker. Connect the unmarked conductor (negative, typically black or plain) to the negative (-) terminal on both components. Consistent polarity is essential for proper sound reproduction.
2. **Terminal Types:**
  - **Spring Clip Terminals:** Press the clip, insert the bare wire, and release the clip to secure.

- **Binding Post Terminals:** Unscrew the cap, insert the bare wire into the hole, and tighten the cap to secure.
  - **Banana Plugs (Sold Separately):** If using banana plugs, attach them to the stripped wire ends according to the plug's instructions, then insert the banana plugs into the corresponding binding posts.
3. **Secure Connections:** Ensure all connections are firm and that no stray copper strands are touching other terminals, which could cause a short circuit.

 **MONSTER**<sup>®</sup>

## PLATINUM XP 16AWG SPEAKER WIRE – 50FT

MAINTAINS STABLE AND SECURE SIGNAL QUALITY ACROSS  
THE ENTIRE LENGTH OF THE CABLE



**CONSISTENT AUDIO PERFORMANCE**

Image 2.2: A hand connecting the stripped speaker wire to an amplifier's binding post terminal.



## PLATINUM XP 16AWG SPEAKER WIRE – 50FT

COMPATIBLE WITH BANANA PLUGS  
(SOLD SEPERATELY)



**DURABLE  
PLASTIC JACKET** —  
Strong resistance to  
overheating

**PREMIUM AUDIO QUALITY**

Image 2.3: Speaker terminals connected using optional banana plugs.

### 3. OPERATING CONSIDERATIONS

Once installed, the Monster Platinum XP speaker wire works passively to transmit audio signals. Optimal operation is achieved through correct installation and proper system configuration.

- **Signal Integrity:** The Oxygen-Free Copper and LPE Insulation are designed to maintain signal integrity, providing a clean audio path from your amplifier to your speakers.
- **Audio Quality:** The Magnetic Flux Tube construction contributes to enhanced audio quality, allowing for cleaner highs, deeper bass, and overall greater sound clarity.
- **System Compatibility:** This speaker wire is compatible with a wide range of audio systems, including home theater setups, stereo systems, and car audio installations.



## PLATINUM XP 16AWG SPEAKER WIRE – 50FT

PREMIUM AUDIO QUALITY AND DELIVERY FOR CLEANER HIGHS, DEEPER BASS, AND GREATER SOUND CLARITY



**SUPERIOR SOUND QUALITY**

Image 3.1: Example of a home stereo system connected with Monster speaker wire.



## PLATINUM XP 16AWG SPEAKER WIRE – 50FT

CLEANER AND MORE ACCURATE SIGNAL  
TRANSMISSION



### ENHANCED CONDUCTIVITY

Image 3.2: Example of a home theater system connected with Monster speaker wire.

## 4. MAINTENANCE

The Monster Platinum XP speaker wire is designed for durability and requires minimal maintenance. Adhering to these guidelines will help ensure its longevity and continued performance:

- **Avoid Physical Damage:** Do not kink, sharply bend, or place heavy objects on the speaker wire. This can damage the internal conductors and insulation, affecting performance.
- **Keep Connections Secure:** Periodically check that all connections to your amplifier/receiver and speakers remain tight and free of corrosion. Loose connections can degrade sound quality.
- **Cleanliness:** Keep the wire and its connections free from dust and debris. A soft, dry cloth can be used for cleaning.
- **Environmental Conditions:** While the durable plastic jacket offers protection, avoid exposing the wire to extreme temperatures, direct sunlight for prolonged periods, or excessive moisture, which can degrade the insulation over time.

## 5. TROUBLESHOOTING

If you experience issues with your audio system after installing the Monster Platinum XP speaker wire,

consider the following troubleshooting steps:

- **No Sound or Intermittent Sound:**
  - **Check Insulation Removal:** Ensure that both layers of insulation (outer jacket and inner conductor insulation) have been completely stripped from the wire ends before connection. A common issue is not fully exposing the copper conductors.
  - **Verify Connections:** Confirm that all speaker wire connections at both the amplifier/receiver and speaker terminals are secure and tight.
  - **Inspect for Shorts:** Check for any stray copper strands that might be touching other terminals or exposed metal, which can cause a short circuit and prevent sound.
- **Poor Sound Quality (e.g., weak bass, distorted audio):**
  - **Check Polarity:** Ensure that the positive (+) and negative (-) terminals are consistently connected across all components. Incorrect polarity (out-of-phase speakers) can lead to weak bass and a diffused soundstage.
  - **Examine Wire Condition:** Inspect the wire for any visible damage, kinks, or cuts that could be affecting signal transmission.
- **One Speaker Not Working:**
  - **Swap Wires:** Temporarily swap the speaker wires between the working and non-working speaker at the amplifier/receiver end. If the problem moves to the other speaker, the issue is with the wire. If the same speaker remains silent, the issue is likely with the speaker itself or the amplifier channel.

## 6. SPECIFICATIONS

---

Feature	Detail
Model	Platinum XP
Wire Gauge	16 AWG
Length	50 Feet (15.24 meters)
Conductor Material	Oxygen-Free Copper (OFC)
Insulation	LPE (Low-Density Polyethylene)
Design	Magnetic Flux Tube
Number of Conductors	2
Color	Platinum (Clear/Reddish-Brown Jacket)
UPC	741835115254
ASIN	B091BFWTJK



## PLATINUM XP 16AWG SPEAKER WIRE – 50FT

### OXYGEN-FREE COPPER WIRE

Enhances the electrical conductivity for high-quality signal transmission

### MAGNETIC FLUX TUBE

Construction for more natural, crisp, and clear audio

### LPE INSULATION

To reduce dielectric signal loss for greater clarity

## HIGH PERFORMANCE SPEAKER CABLE

Image 6.1: Detailed view of the speaker wire's internal construction.

## 7. WARRANTY INFORMATION

---

Monster offers a limited lifetime warranty for the Platinum XP 16 AWG Speaker Wire. This warranty covers manufacturing defects and ensures a replacement in case of any damaged Monster speaker cable. Please retain your proof of purchase for warranty claims.

## 8. SUPPORT

---

For further assistance, technical support, or warranty inquiries, please visit the official Monster website or contact their customer service department. Refer to the packaging or the Monster website for the most current contact information.