

**DXQ S108B**

# WOWGO S108B Replacement Battery User Manual

Model: S108B | Brand: DXQ

## 1. INTRODUCTION

---

Thank you for choosing the WOWGO S108B Replacement Battery. This high-performance Lithium-ion battery is specifically designed to provide reliable and long-lasting power for your WOWGO S108B cordless vacuum cleaner. Please read this manual carefully before installation and use to ensure optimal performance and safety.

This battery features 6 high-performance 2500 mAh Li-ion cells, ensuring extended runtime and consistent power for your cleaning tasks.

## 2. PRODUCT OVERVIEW

---



**Figure 2.1:** Front view of the WOWGO S108B Replacement Battery. It features a black casing with a light blue release button and three green LED indicators for charge status.



**Figure 2.2:** Dimensions of the WOWGO S108B Replacement Battery. The battery measures 140mm in length, 77mm in width, and 42mm in height. Key specifications like Lithium-ion, 2500mAh capacity, and dimensions are highlighted.

# Compatible with S108B

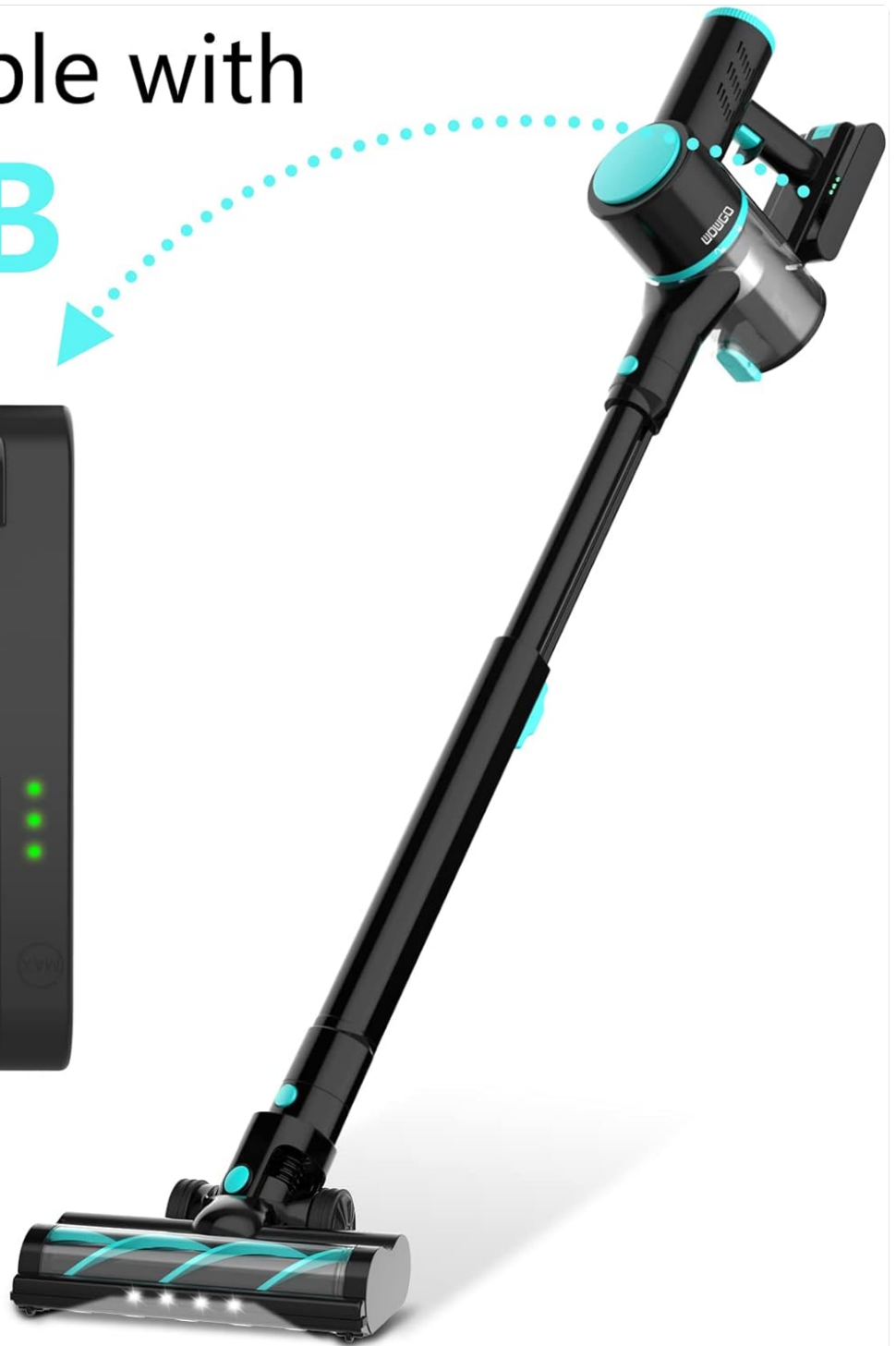


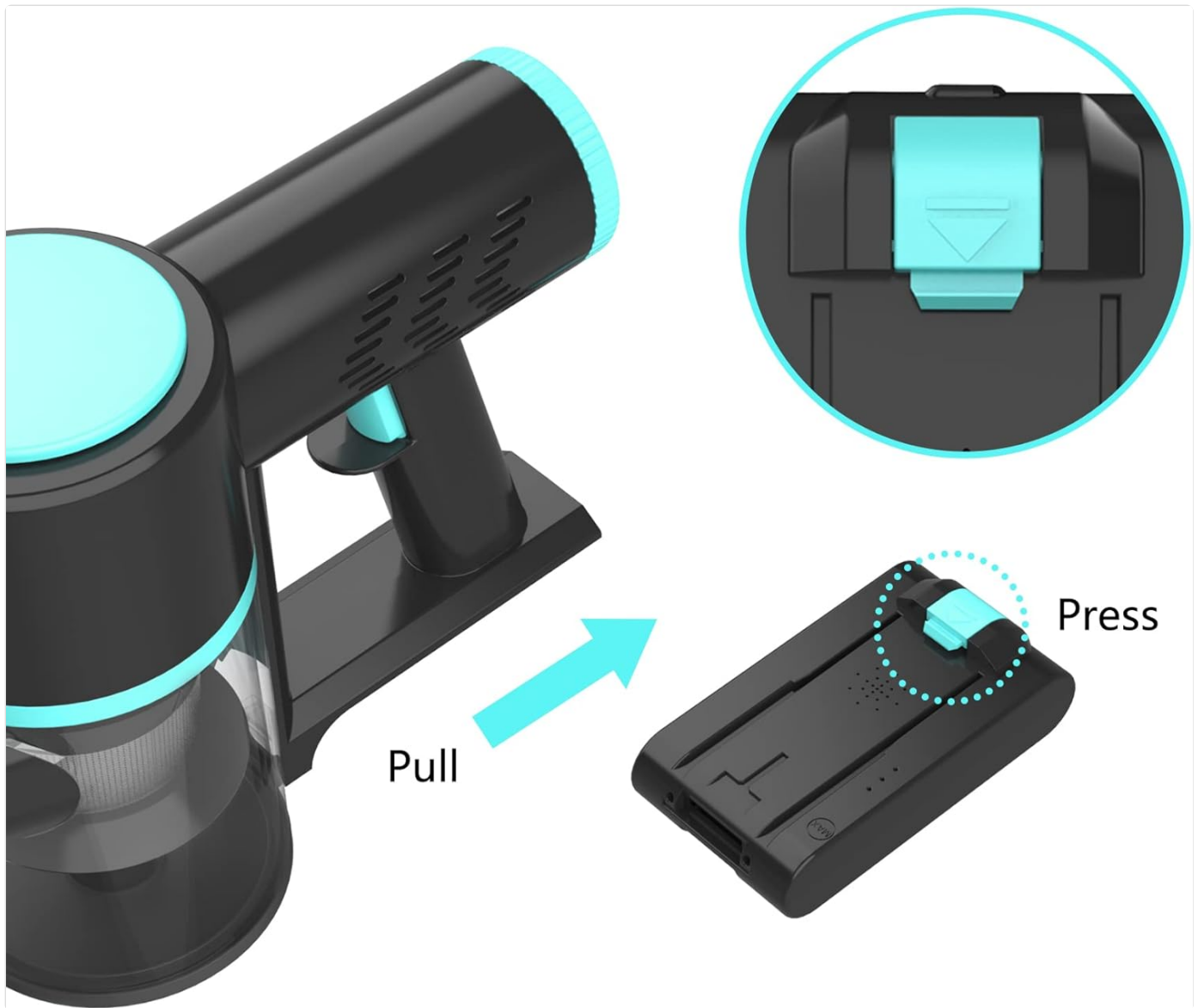
Figure 2.3: The WOWGO S108B Replacement Battery is specifically compatible with the WOWGO S108B cordless vacuum cleaner, shown alongside the battery.

## 3. SETUP AND INSTALLATION

Follow these steps to properly install the replacement battery into your WOWGO S108B vacuum cleaner:

1. **Ensure Safety:** Before beginning, ensure the vacuum cleaner is turned off and unplugged from any charging source.
2. **Locate Battery Compartment:** Identify the battery compartment on your WOWGO S108B vacuum cleaner. This is typically located near the handle or main body.
3. **Remove Old Battery (if applicable):** If replacing an existing battery, press the release button (often light blue) on the battery pack and gently pull the battery out of its slot.
4. **Insert New Battery:** Align the new WOWGO S108B Replacement Battery with the battery slot. Gently push the battery into the compartment until you hear a click, indicating it is securely locked in place. Ensure the release button is fully

engaged.



**Figure 3.1:** Illustration demonstrating the battery removal and installation process. To remove, pull the battery while pressing the light blue release button. To install, align and push firmly until it clicks into place.

After installation, you may need to charge the battery fully before first use. Refer to your vacuum cleaner's original manual for charging instructions.

## 4. OPERATING INSTRUCTIONS

---

The WOWGO S108B Replacement Battery operates seamlessly with your WOWGO S108B cordless vacuum cleaner. Here are general guidelines for optimal use:

- **Initial Charge:** For best performance, fully charge the battery before its first use.
- **Charging:** Connect your vacuum cleaner to its original charging adapter. The battery's LED indicators will typically show charging progress. A full charge usually takes several hours.
- **Usage:** Once fully charged, the battery provides power for your vacuum cleaner's operation. The 2500mAh capacity ensures a substantial runtime for typical cleaning tasks.
- **Battery Indicators:** Observe the LED indicators on the battery or your vacuum cleaner to monitor the remaining charge.

## 5. MAINTENANCE AND CARE

Proper maintenance will extend the life of your WOWGO S108B Replacement Battery:

- **Regular Charging:** Avoid completely draining the battery before recharging. Frequent partial charges are generally better for Lithium-ion batteries than full discharge cycles.
- **Storage:** If storing the battery for an extended period, charge it to approximately 50-60% and store it in a cool, dry place away from direct sunlight and extreme temperatures. Recharge it every 3-6 months to prevent deep discharge.
- **Cleaning:** Keep the battery contacts clean and free of dust or debris. Use a dry cloth to wipe them if necessary.
- **Avoid Extreme Temperatures:** Do not expose the battery to temperatures below 0°C (32°F) or above 45°C (113°F) during operation or storage.
- **Disposal:** Dispose of old or damaged batteries responsibly according to local regulations. Do not dispose of batteries in household waste.

## 6. TROUBLESHOOTING

If you encounter issues with your WOWGO S108B Replacement Battery, consider the following:

Problem	Possible Cause	Solution
Battery not charging.	<ul style="list-style-type: none"><li>• Charger not connected properly.</li><li>• Faulty charger or power outlet.</li><li>• Battery contacts are dirty.</li></ul>	<ul style="list-style-type: none"><li>• Ensure charger is securely plugged into both the vacuum and the power outlet.</li><li>• Try a different power outlet or charger (if available).</li><li>• Clean battery contacts with a dry cloth.</li></ul>
Battery not holding charge / Short runtime.	<ul style="list-style-type: none"><li>• Battery not fully charged.</li><li>• Battery is old or worn out.</li><li>• Vacuum cleaner motor issues.</li></ul>	<ul style="list-style-type: none"><li>• Ensure battery is fully charged before use.</li><li>• If the battery is old, it may need replacement.</li><li>• Consult your vacuum cleaner's manual for troubleshooting motor issues.</li></ul>
Battery not fitting into vacuum.	<ul style="list-style-type: none"><li>• Incorrect battery model.</li><li>• Improper alignment during installation.</li></ul>	<ul style="list-style-type: none"><li>• Verify that you have the correct WOWGO S108B replacement battery.</li><li>• Ensure proper alignment and push firmly until it clicks into place (refer to Section 3).</li></ul>

If the problem persists, please contact customer support.

## 7. SPECIFICATIONS

Feature	Specification
Brand	DXQ (WOWGO)
Model Compatibility	WOWGO S108B Cordless Vacuum Cleaner

Feature	Specification
Battery Type	Lithium-ion
Battery Capacity	2500 mAh
Voltage	22.2 Volts
Number of Cells	6 (high performance)
Dimensions (L x W x H)	140 x 77 x 42 mm
Battery Weight	80 Grams

## 8. WARRANTY AND SUPPORT

This WOWGO S108B Replacement Battery is manufactured to high-quality standards. For information regarding warranty coverage and terms, please refer to the original purchase documentation or contact the seller directly.

If you require technical assistance or have questions not covered in this manual, please contact WOWGO customer support through the retailer's platform or the official brand website (if available).

Please retain your proof of purchase for any warranty claims.