

## Makeid Q1

# Makeid Q1 Bluetooth Label Maker Instruction Manual

MODEL: Q1

Brand: Makeid

## 1. PRODUCT OVERVIEW

---

The Makeid Q1 is a high-definition (300dpi) Bluetooth label maker designed for home and office organization. Its retro typewriter-inspired design combines aesthetic appeal with modern convenience, offering one-click printing for dates and custom content.

# MakeID Q1 Bluetooth Label Maker

APP · MakeID Life



Download from  
the App Store



Get it on  
Google Play



Image: Makeid Q1 Bluetooth Label Maker shown with its companion smartphone application interface.

## Key Features:

- **High-Definition Prints:** 300 dpi resolution for sharp, clear text and images.
- **One-Click Printing:** Dedicated 'D' button for current date and 'C' button for frequently used custom designs.
- **Bluetooth Connectivity:** Compatible with iOS and Android devices via the MakeID-Life app.
- **Compact & Portable:** Small, lightweight design for easy use anywhere.

- **Versatile App:** Offers multiple templates, fonts, stickers, QR codes, and barcode printing options.

Your browser does not support the video tag.

Video: An overview of the Makeid Q1 Label Maker highlighting its features and ease of use for a refined life.

## 2. SETUP AND CONNECTION

### 2.1 Unboxing and Initial Inspection

Upon receiving your Makeid Q1 Label Maker, carefully unbox all components. Ensure the device is free from any visible damage. The package typically includes the label maker, a USB-C charging cable, and a starter roll of label tape.

Your browser does not support the video tag.

Video: A quick unboxing of the Makeid Q1 Label Maker, showing its contents and initial appearance.

### 2.2 Charging the Device

The Makeid Q1 Label Maker is equipped with a rechargeable Lithium Polymer battery. Use the provided USB-C cable to charge the device. Connect the USB-C end to the label maker and the USB-A end to a compatible power adapter (not included) or a computer USB port. The indicator light will show charging status.

### 2.3 Downloading the MakeID-Life App

The Makeid Q1 operates via a dedicated smartphone application. Search for "MakeID-Life" in your device's app store (available for iOS and Android). Download and install the application.



Image: Instructions for downloading the MakeID-Life app from the App Store or Google Play.

### 2.4 Connecting via Bluetooth

1. Turn on your Makeid Q1 Label Maker by long-pressing the power button.
2. Enable Bluetooth on your smartphone.
3. Open the MakeID-Life app. The app will automatically search for nearby devices.
4. Select "Q1" from the list of available devices to pair. You may be prompted to grant location permissions on Android devices due to Bluetooth communication protocols; simply click 'PAIR' without checking additional boxes.

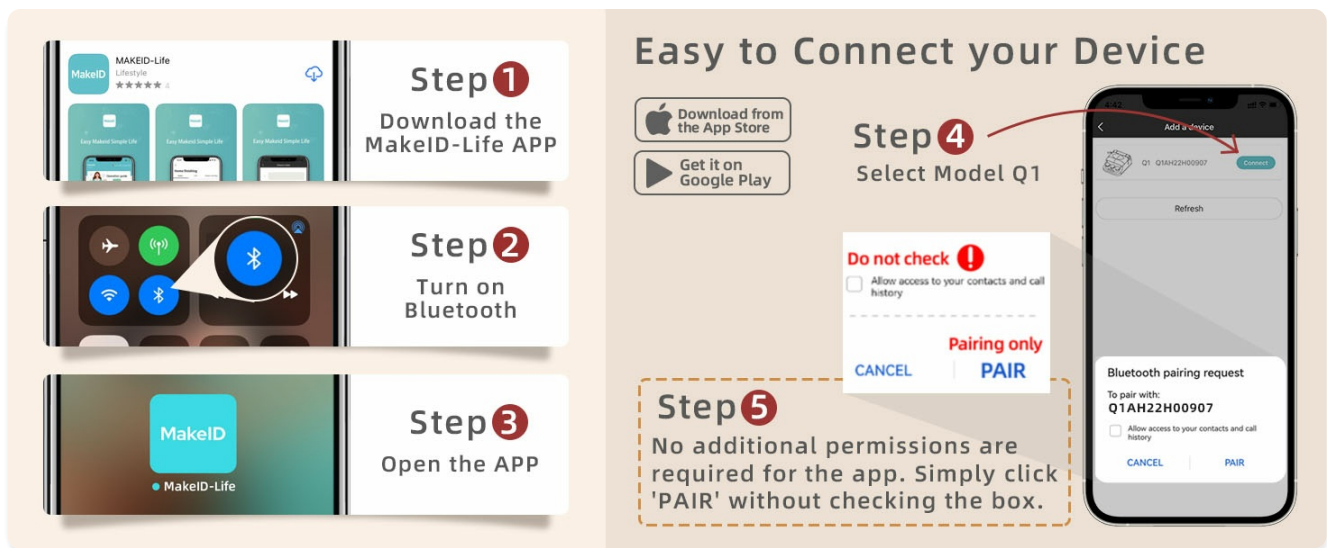


Image: Visual guide demonstrating the Bluetooth connection process between the Makeid Q1 and a smartphone.

### 3. OPERATING INSTRUCTIONS

#### 3.1 Loading Label Tape

To load or replace the label tape:

1. Open the top cover of the label maker.
2. Remove the existing paper roll holder.
3. Place a new label tape roll onto the holder, ensuring the arrow on the paper protector faces up.
4. Insert the loaded holder back into the printer's paper compartment.
5. Extend the label paper slightly out above the paper outlet.
6. Close the top cover firmly.

Your browser does not support the video tag.

Video: Demonstrates how to change the label paper roll in a compatible label maker.

#### 3.2 Using the MakeID-Life App for Printing

The app provides extensive customization options:

- **Text & Fonts:** Choose from over 40 fonts and various text styles.
- **Stickers & Frames:** Access over 300 stickers and 26+ frames to enhance your labels.
- **QR Codes & Barcodes:** Generate and print QR codes and barcodes directly from the app.
- **Templates:** Utilize monthly updated templates for various organizational needs.

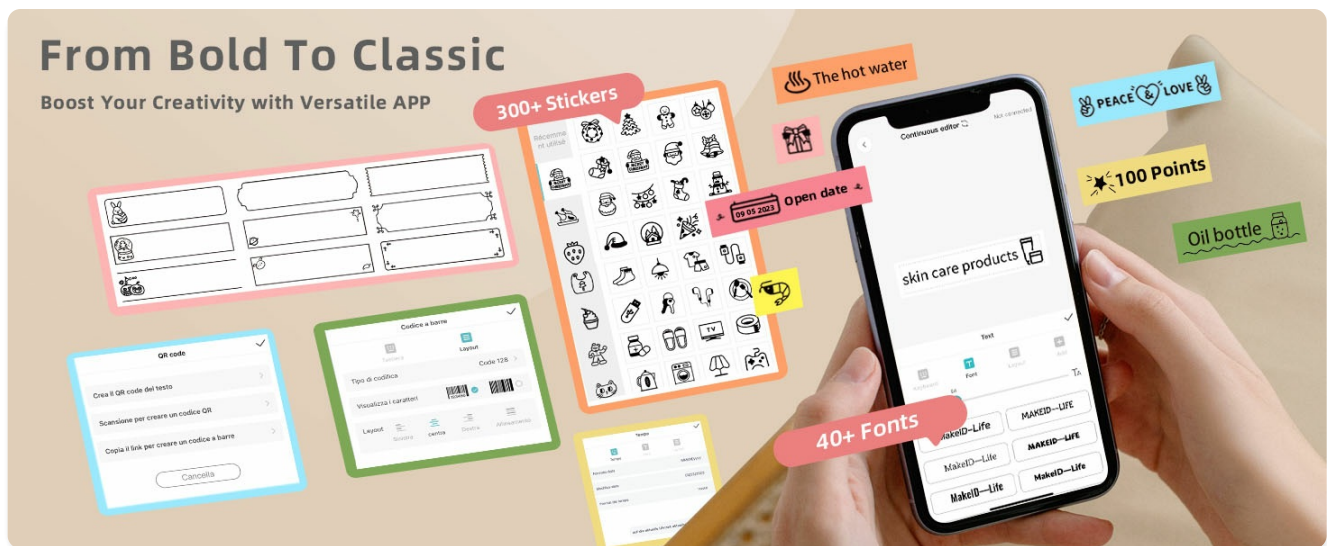


Image: The MakeID-Life app interface showcasing diverse fonts, stickers, and QR code generation for label customization.

### 3.3 One-Click Printing with Physical Buttons

The Makeid Q1 features three shortcut keys for quick printing:

- **'P' (Power) Button:** Turns the device on/off.
- **'D' (Date) Button:** Press to automatically print the current date. This is ideal for marking food items or documents.
- **'C' (Custom) Button:** Program this button via the app to print a frequently used custom design or text without needing to open the app.

# Date Button

## One-Click Print Current Date



Image: The 'D' (Date) button on the Makeid Q1, demonstrating its use for printing dates on various items.

# Custom Button

## Print Frequently Used Text Anytime!



Image: The 'C' (Custom) button on the Makeid Q1, showing how it can be used for personalized labels.



Image: The Makeid Q1 printing a custom label, illustrating the convenience of the pre-saved content feature.

## 4. MAINTENANCE

### 4.1 Cleaning the Print Head

To ensure optimal print quality, regularly clean the print head:

1. Turn off the label maker.
2. Open the top cover and remove the label tape roll.
3. Gently wipe the print head surface with a cotton swab lightly dampened with 75% ethyl alcohol.
4. Allow the alcohol to fully evaporate (approximately 10 minutes) before reinserting the label tape and closing the cover.

### 4.2 General Care

- Keep the device in a clean, dry environment.
- Avoid exposing the label maker to extreme temperatures or direct sunlight.
- Use only official Makeid label tapes for best performance and to prevent damage.

## 5. TROUBLESHOOTING

### 5.1 Common Issues and Solutions

Issue	Possible Cause	Solution
Device won't turn on	Low battery; Power button not pressed long enough	Charge the device; Long-press the power button for 3 seconds.
Unable to connect via Bluetooth	Bluetooth off; App not open; Device too far; Permissions denied	Ensure Bluetooth is on; Open app; Move closer; Grant necessary permissions.
Poor print quality	Dirty print head; Incorrect label tape; Low battery	Clean print head; Use official Makeid tape; Charge device.

Issue	Possible Cause	Solution
Label tape not feeding	Improperly loaded tape; Tape jam	Re-load tape correctly; Clear any obstructions.

## 6. SPECIFICATIONS

Feature	Detail
Model Name	Q1
Brand	Makeid
Printing Technology	Thermal
Print Resolution	300 dpi
Connectivity Technology	Bluetooth
Compatible Devices	Smartphones (iOS & Android)
Control Method	App
Item Weight	1.04 pounds
Product Dimensions	4.13"D x 4.33"W x 1.89"H
Batteries	1 Lithium Polymer batteries required (included)
Special Feature	Portable & Vintage Design

## 7. WARRANTY AND SUPPORT

For warranty information and customer support, please refer to the documentation included with your product or visit the official Makeid website. Keep your purchase receipt as proof of purchase for any warranty claims.