

[Manuals.plus](#) /

> [luxceo](#) /

> LUXCEO P400 RGB LED Video Light Wand User Manual

luxceo P400S

LUXCEO P400 RGB LED Video Light Wand User Manual

Model: P400S

INTRODUCTION

Thank you for purchasing the LUXCEO P400 RGB LED Video Light Wand. This versatile lighting tool is designed for various photography and videography applications, offering a wide range of color and brightness adjustments. Please read this manual carefully before use to ensure proper operation and maintenance.

SAFETY INFORMATION

- Do not expose the device to water or excessive humidity.
- Avoid dropping or subjecting the device to strong impacts.
- Do not attempt to disassemble or repair the device yourself. Refer to qualified personnel for service.
- Keep out of reach of children.
- Use only the specified charging cable and adapter.
- Operating temperature: 0°C to 40°C. Storage environment: -10°C to 50°C.

PRODUCT OVERVIEW

The LUXCEO P400 LED Video Light Wand features an intuitive design for ease of use. Below are the key components and controls.



Image: Product Details and Controls

This image illustrates the physical dimensions of the light wand (40cm length, 4.5cm width) and highlights key features such as the lanyard strap, 1/4" screw hole for mounting, and the control panel. The control panel includes a display, mode button, up button, IR receiver, power button, down button, and arrow button.

Components:

- LED Light Wand (P400S)
- Remote Control
- USB Charging Cable
- Lanyard
- Handbag (carrying case)
- User Manual (this document)

Control Panel:

- **Display:** Shows current settings (CCT, HSI, Scene mode, battery level).

- **Power Button:** Turns the device on/off.
- **Mode Button:** Cycles through different lighting modes (CCT, HSI, Scene).
- **Up/Down Buttons:** Adjust values (brightness, color temperature, hue, saturation).
- **Arrow Button:** Navigation or selection within menus.
- **IR Receiver:** For remote control signals.
- **1/4" Screw Hole:** Located at the bottom for mounting on tripods or light stands.

SETUP

1. Initial Charging

Before first use, fully charge the light wand. The built-in 2500mAh battery provides approximately 1.7 hours of runtime at full power.

- Connect the provided USB charging cable to the light wand's charging port.
- Connect the other end of the USB cable to a compatible USB power source (e.g., charger, power bank, laptop, computer).
- The display will indicate charging status. A full charge takes approximately 1.7 hours.

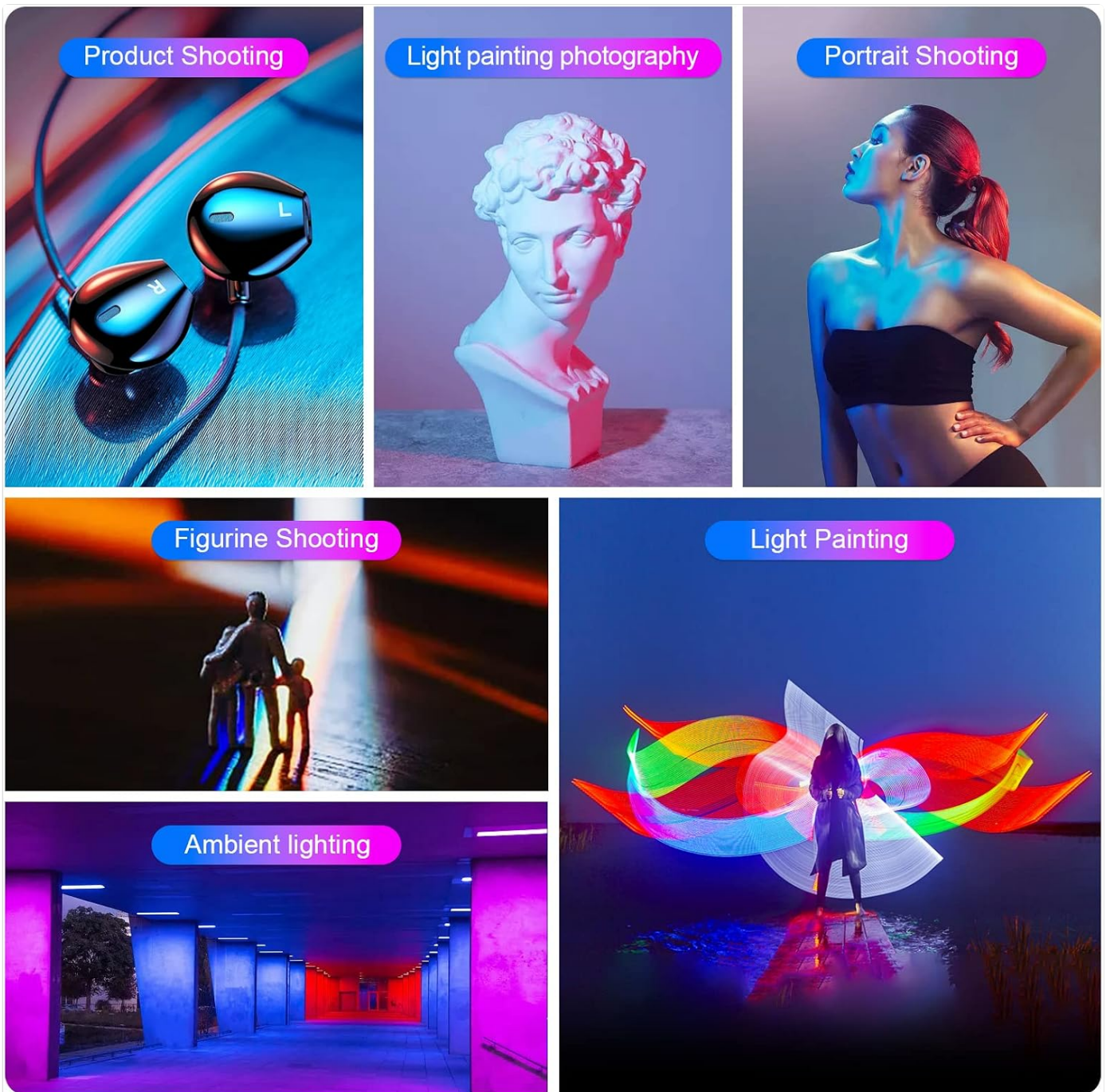


Image: Battery and Charging

This image highlights the 2500mAh 7.4V built-in battery and shows various charging methods including a wall charger, power bank, laptop, and desktop computer. It also indicates a charging time of around 2 hours and a working time of 1.6-75 hours depending on brightness settings.

2. Mounting the Light Wand

The light wand features a 1/4" screw hole at its base, allowing it to be mounted on standard tripods, light stands, or other compatible accessories.

- Align the 1/4" screw of your tripod or stand with the screw hole on the light wand.
- Rotate the light wand clockwise until it is securely fastened. Do not overtighten.

OPERATING INSTRUCTIONS

1. Power On/Off

- Press and hold the **Power Button** for a few seconds to turn the light wand on or off.

- The LCD display will illuminate upon power-on.

2. Mode Selection

Press the **Mode Button** to cycle through the available lighting modes: CCT Mode, HSI Mode, and Scene Mode.



Image: Lighting Modes Overview

This image visually demonstrates the CCT (Color Correlated Temperature) mode on the left, showing warm to cool white light. On the right, it shows the RGB mode with various vibrant colors. Below, it displays examples of the 12 different scene effects available, such as lightning, police car, fire truck, and candlelight.

CCT Mode (Color Temperature)

In CCT mode, you can adjust the color temperature from 2500K (warm light) to 6500K (cool light) and control the brightness.

HSI-Full color mode

In HIS mode, to select from 360 colors with saturation control that produces a myriad of color combinations There is always a color that you need.



HUE
0°-360°

SAT
0%-100%

INT
0%-100%



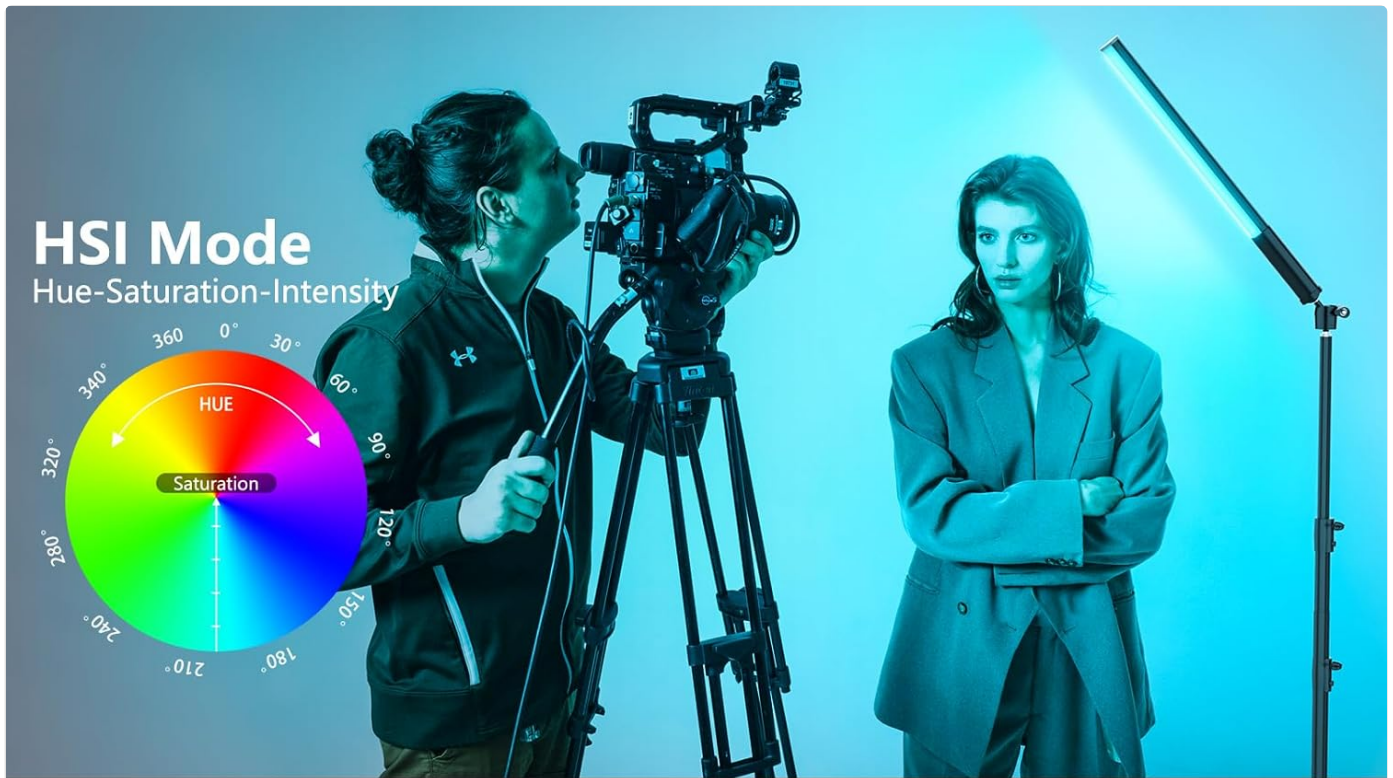
Image: CCT Mode Details

This image explains the CCT (Color Temperature Range) mode, showing a slider from 2500K to 6500K. It also illustrates accurate brightness adjustment from 0% to 100%. Two portraits demonstrate the visual difference between 2500K (warmer tone) and 6500K (cooler tone) lighting.

- Use the **Up/Down Buttons** to adjust the color temperature.
- Use the **Arrow Button** to switch between adjusting color temperature and brightness.
- Adjust brightness from 0% to 100% using the **Up/Down Buttons**.

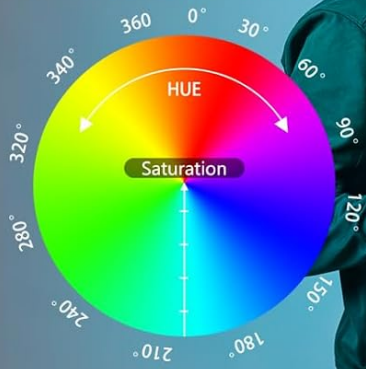
HSI Mode (Hue, Saturation, Intensity)

HSI mode allows for full control over color, offering 36,000 selectable colors by adjusting Hue (0-360°), Saturation (0-100%), and Intensity (0-100%).



HSI Mode

Hue-Saturation-Intensity



CCT Mode



Color Temperature Range

2500K

6500K



Accurate Brightness Adjustment

0%

100%



2500k

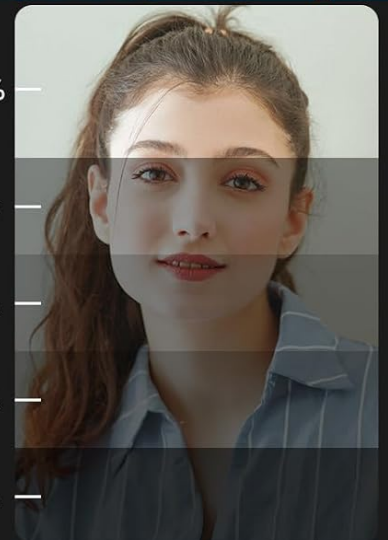
100%

80%

60%

40%

20%



6500k

Image: HSI Mode Details

This image details the HSI (Hue-Saturation-Intensity) mode, featuring a color wheel that illustrates the range of hues (0-360°) and saturation levels. It shows how to select colors and adjust their intensity for precise lighting control.

PRODUCT DETAILS

Lightweight and convenient

4.5cm

27.4cm

40cm

 350g

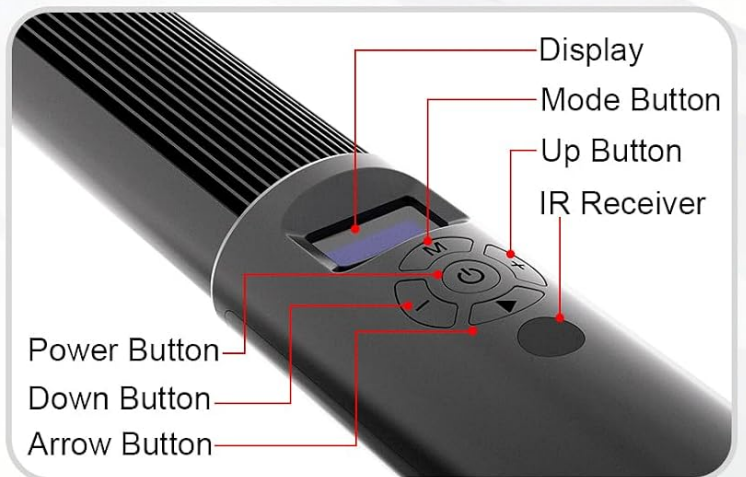


Image: HSI Full Color Mode

This image demonstrates the HSI Full Color mode, showcasing a wide spectrum of 360 colors with saturation control. It highlights the ability to select specific hues (0°-360°), saturation (0%-100%), and intensity (0%-100%), and includes an example of light painting photography using the varied colors.

- Use the **Arrow Button** to switch between adjusting Hue, Saturation, and Intensity.
- Use the **Up/Down Buttons** to adjust the selected parameter.

Scene Mode

The light wand offers 12 pre-programmed lighting effects to simulate various scenarios.

- Use the **Up/Down Buttons** to cycle through the 12 scene effects.
- Effects include: Lightning, Police Car, Fire Truck, Candlelight, and more.

3. Remote Control Operation

The included remote control allows for convenient adjustment of settings from a distance of up to 7 meters.



Image: Light Wand with Remote Control

This image displays the LUXCEO P400 light wand alongside its remote control. The left side of the image shows a grid of various color outputs achievable with the light, demonstrating its RGB capabilities. The remote control allows for easy adjustment of these settings.

- Ensure the remote control is pointed towards the IR receiver on the light wand.
- The remote control buttons correspond to the functions on the light wand's control panel (e.g., power, mode, brightness/color adjustment).

MAINTENANCE

- **Cleaning:** Use a soft, dry cloth to clean the surface of the light wand. Do not use abrasive cleaners or solvents.
- **Storage:** When not in use for extended periods, store the light wand in a cool, dry place, away from direct sunlight

and extreme temperatures. It is recommended to charge the battery to about 50% before long-term storage.

- **Battery Care:** To prolong battery life, avoid fully discharging the battery frequently. Recharge the battery regularly, even if the device is not in use.

TROUBLESHOOTING

Problem	Possible Cause	Solution
Light does not turn on.	Battery is depleted.	Charge the light wand fully.
Remote control not working.	Remote battery low or line of sight blocked.	Replace remote battery. Ensure remote is pointed at the IR receiver without obstruction.
Light output is dim.	Brightness setting is low or battery is low.	Increase brightness setting. Charge the light wand.
Display is not working.	Device malfunction.	Try restarting the device. If issue persists, contact customer support.

SPECIFICATIONS

Feature	Detail
Model	P400S
Color Temperature (CCT)	2500K - 6500K
Hue Range (HSI)	0 - 360°
Color Rendering Index (CRI)	≥ 95
TLCI	≥ 97
Battery Capacity	7.4V, 2500mAh / 18.5Wh Lithium-ion
Battery Life (Full Power)	> 1.7 hours
Charging Time	Approx. 1.7 hours
Operating Temperature	0°C ~ 40°C
Storage Temperature	-10°C ~ 50°C
Dimensions (L x W x H)	400 x 44.5 x 36.5 mm (15.75 x 1.75 x 1.44 inches)
Weight	360 g (0.79 lbs)
Mounting	1/4" Screw Hole
Connectivity	Infrared (for remote control)
UPC	787996886978

WARRANTY AND SUPPORT

Specific warranty details are not provided within this manual. Please refer to your purchase documentation, retailer, or the official LUXCEO website for information regarding warranty coverage and customer support.

For technical assistance or inquiries, please contact the seller or manufacturer directly using the contact information provided at the time of purchase.