

## Hisense WD5S1045BW

# Hisense 5S Series WD5S1045BW Washer Dryer User Manual

Model: WD5S1045BW

## 1. IMPORTANT SAFETY INFORMATION

---

Please read this manual carefully before using your appliance and keep it for future reference. It contains important information regarding the safe installation, use, and maintenance of the appliance.

### 1.1 General Safety

- Ensure the appliance is properly earthed.
- Do not allow children to play with the appliance.
- Keep packaging materials out of reach of children.
- Do not install the appliance in a damp place or where it may be exposed to water.
- Always unplug the appliance before cleaning or maintenance.

### 1.2 Electrical Safety

- Check that the voltage and frequency indicated on the rating plate correspond to your household electricity supply.
- Do not use multiple adapters or extension cords.
- If the power cord is damaged, it must be replaced by the manufacturer, its service agent, or similarly qualified persons.

### 1.3 Water Safety

- Ensure water inlet hoses are securely connected to prevent leaks.
- Only connect to a cold water supply.
- Do not operate the appliance if there is a visible water leak.

## 2. PRODUCT OVERVIEW

---

The Hisense 5S Series WD5S1045BW is a freestanding inverter washer dryer designed for efficient and convenient laundry care. It combines washing and drying functions in a single appliance, saving space and effort.



Front view of the Hisense WD5S1045BW Washer Dryer, showcasing its modern design and control panel.

## 2.1 Key Features

- **10.5kg Wash & 6kg Dry Load:** Ideal for large households, offering a 2-in-1 solution for washing and drying.
- **Improved A/D Energy Efficiency:** Designed for outstanding efficiency, reducing electricity consumption.

- **Auto Dosing:** Automatically dispenses the precise amount of detergent and softener for up to 24 loads.
- **Hygiene Guard:** Features drum clean, soapbox clean, and Pure Jet function for enhanced hygiene, with a sterile bellow material.
- **Steam Wash:** High-temperature steam removes 99.9% of bacteria from laundry.
- **Quick Wash+:** Offers 15-minute and 49-minute programs for quick laundry needs.
- **ConnectLife App:** Enables smart control and energy monitoring from your smartphone.



Diagram showing the dimensions of the Hisense WD5S1045BW Washer Dryer (845mm H x 595mm W x 660mm D) and icons representing key features like Auto Dosing, Connect Life, Steam Wash, Quick Wash+, Washer Dryer, and Energy Monitoring.

### 3. SETUP AND INSTALLATION

Proper installation is crucial for the safe and efficient operation of your washer dryer. It is recommended to have the appliance installed by a qualified technician.

#### 3.1 Unpacking

- Remove all packaging materials, including the polystyrene base and any protective film.
- Carefully remove the transport bolts from the rear of the appliance. Keep these bolts for future transport if needed.
- Insert the plastic covers provided into the holes left by the transport bolts.

### 3.2 Placement and Leveling

- Place the appliance on a firm, level floor. Avoid placing it on carpets or soft flooring that could obstruct ventilation.
- Adjust the adjustable leveling legs at the bottom of the appliance until it is perfectly level and stable. Use a spirit level to verify.

### 3.3 Water Connection

- Connect the supplied cold water inlet hose to the cold water tap and the corresponding inlet valve on the back of the appliance.
- Ensure all connections are tight to prevent leaks. Do not overtighten.

### 3.4 Drainage Connection

- Position the drain hose into a standpipe or over the edge of a sink, ensuring it is securely fixed to prevent displacement during operation.
- The drain hose should be at a height between 60 cm and 100 cm from the floor.

### 3.5 Power Connection

- Plug the power cord into a grounded electrical outlet.
- Ensure the outlet is easily accessible after installation.

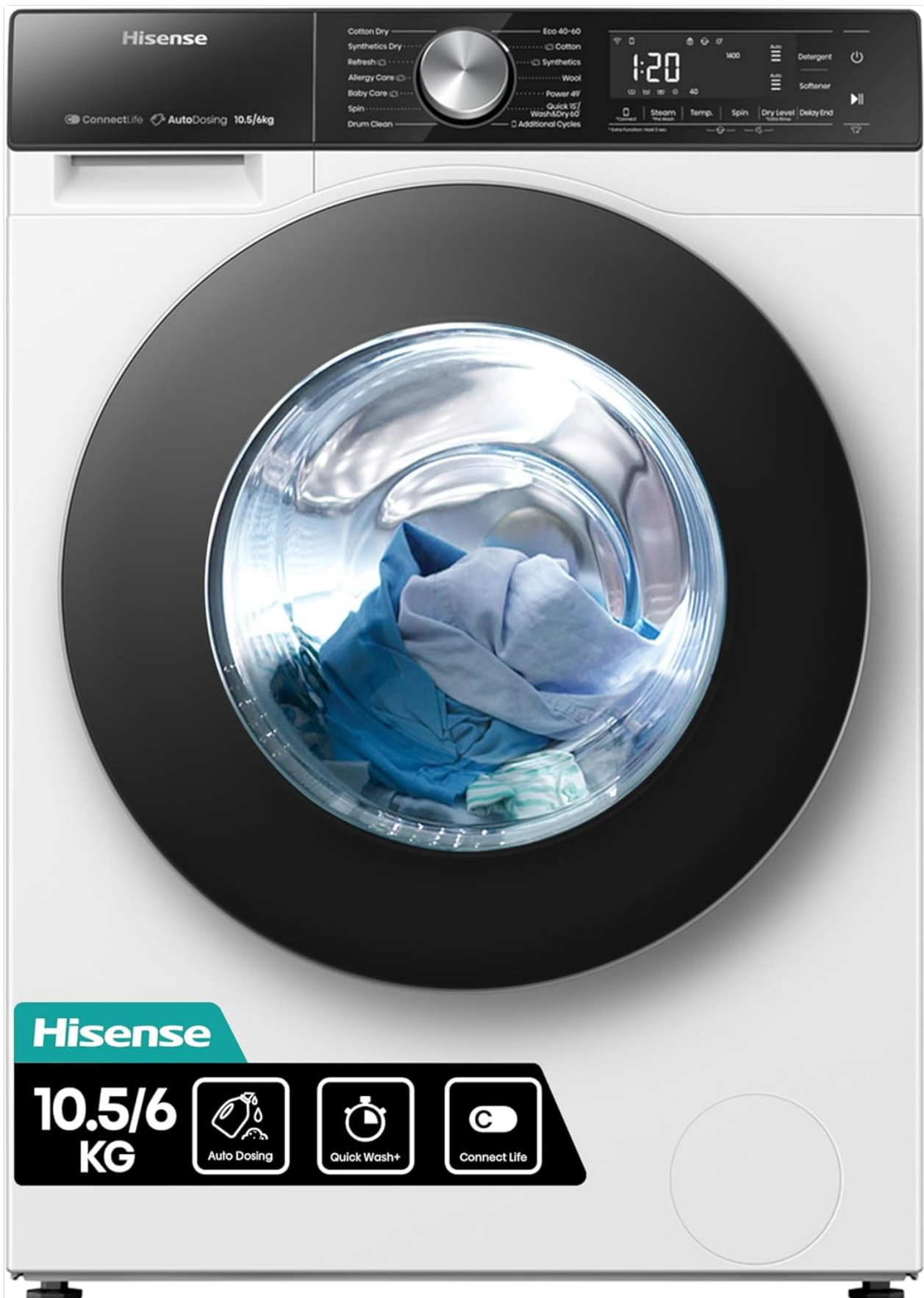
## 4. OPERATING INSTRUCTIONS

---

This section guides you through the daily use of your Hisense washer dryer.

### 4.1 Control Panel Overview

The control panel features a central program selector knob, a digital display, and touch-sensitive buttons for various functions and settings.



The control panel of the Hisense WD5S1045BW, showing the program selector, digital display, and function buttons.

## 4.2 Loading Laundry

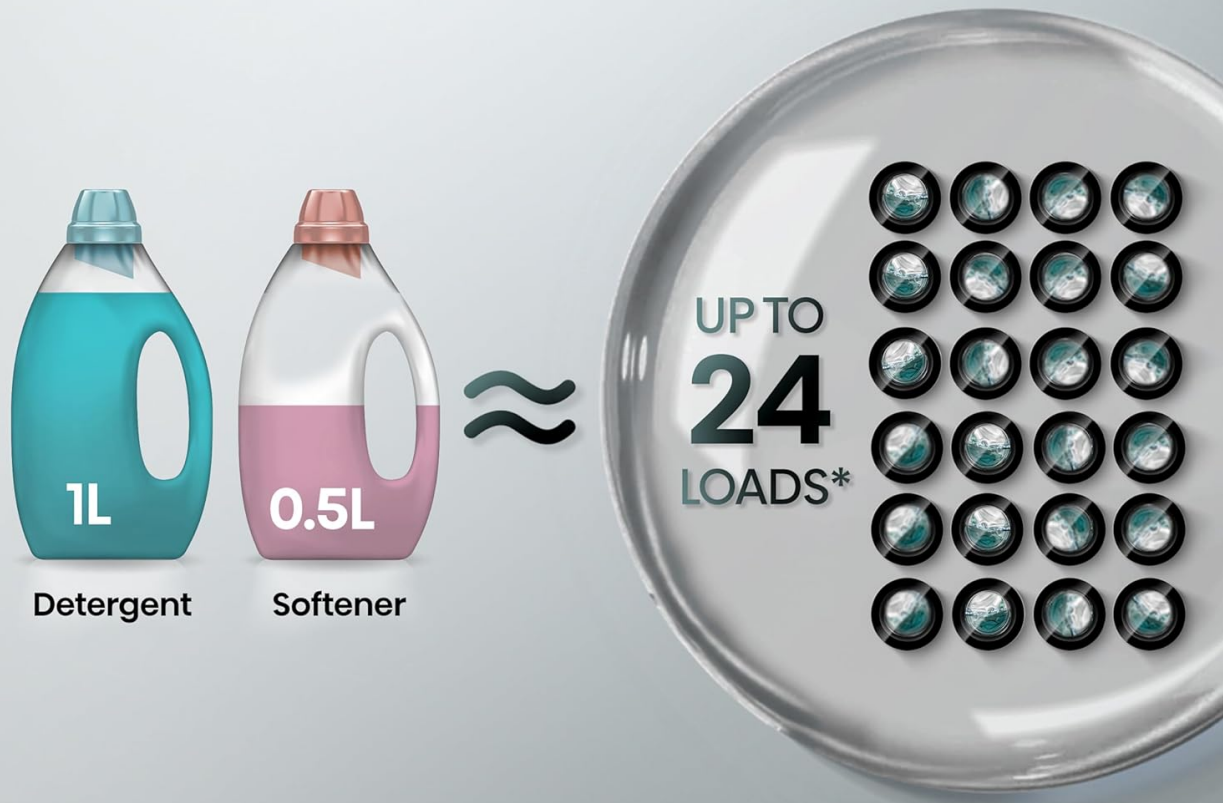
- Open the door and load laundry into the drum. Do not overload the machine.
- For optimal washing and drying, ensure there is enough space for clothes to tumble freely.

## 4.3 Adding Detergent and Softener (Auto Dosing)

The Auto Dosing system automatically dispenses the correct amount of detergent and softener.

# Auto Dosing

Fill once. Wash for a month



\*Actual results may vary depending on individual use, the washing load and settings.

Illustration of the Auto Dosing system, showing separate compartments for 1L detergent and 0.5L softener, capable of providing up to 24 loads from a single fill.

- Fill the detergent and softener compartments in the dispenser drawer. The machine can store up to 24 loads worth of liquid.
- The machine will automatically choose the precise dosage based on the weight of the clothes.

## 4.4 Program Selection

Turn the program selector knob to choose from 19 available programs, including:

- Cotton
- Synthetics
- Wool
- Quick Wash+ (15 min for 5 shirts, 49 min for 25 shirts)
- Steam Wash
- Eco 40-60
- Allergy Care

- Baby Care
- Drum Clean



Visual representation of the Quick Wash+ feature, highlighting the 15-minute cycle for 5 shirts and the 49-minute cycle for 25 shirts.

#### 4.5 Starting a Cycle

- After selecting the program, press the 'Start/Pause' button to begin the cycle.
- The display will show the remaining time.

#### 4.6 Using Smart Connectivity (ConnectLife App)

The ConnectLife app allows you to control your washer dryer remotely and monitor its performance.

# Smart Wizard

Never worry about stains



A smartphone displaying the ConnectLife app interface, showing options for selecting laundry types and managing wash cycles, with the washer dryer in the background.

- Download the ConnectLife app from your smartphone's app store.
- Follow the in-app instructions to pair your appliance.
- Use the app to select programs, start/pause cycles, and monitor energy consumption.

# Energy Monitoring

Know your energy cost at all time



A graphic illustrating the Energy Monitoring feature, showing graphs of energy and water usage over time, accessible through the ConnectLife app on a smartphone.

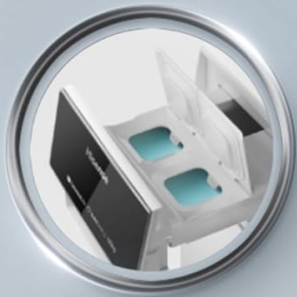
## 4.7 Washer Dryer Function

The appliance automatically transitions from washing to drying.



# Hygiene Guard

Stay sterile laundry



Sterile Soapbox + Auto Clean



Sterile Rubber Seal



Detailed view of Hygiene Guard features, including sterile soapbox with auto clean, sterile rubber seal, and the drum being cleaned by water jets.

- Run the 'Drum Clean' program periodically, especially if you notice odors or residue.
- The Pure Jet function washes away stains on the door and bellow.

## 5.2 Cleaning the Detergent Dispenser

- Pull out the detergent dispenser drawer completely.
- Rinse the compartments under running water to remove any detergent or softener residue.
- Wipe the drawer and its housing dry before reinserting.

## 5.3 Cleaning the Filter

- Locate the filter cover at the bottom front of the appliance.
- Place a shallow container underneath to catch any residual water.
- Twist the filter counter-clockwise to remove it.
- Clean any lint or debris from the filter and rinse it under running water.
- Reinsert the filter and twist clockwise to secure it.

## 5.4 Exterior Care

- Wipe the exterior surfaces with a soft, damp cloth.
- Avoid using abrasive cleaners or solvents that could damage the finish.

## 6. TROUBLESHOOTING

Before contacting customer service, please refer to the following common issues and solutions.

Problem	Possible Cause	Solution
Appliance does not start	No power supply; Door not closed properly; Program not selected.	Check power plug and fuse; Ensure door is firmly closed; Select a program and press Start.
Excessive vibration during spin	Transport bolts not removed; Appliance not level; Uneven load.	Remove transport bolts; Adjust leveling feet; Redistribute laundry inside the drum.
Water leakage	Hoses not connected tightly; Drain hose blocked or improperly positioned.	Check and tighten hose connections; Clear any blockages in the drain hose.
Clothes not drying properly	Overloaded dryer; Lint filter blocked; Incorrect drying program.	Reduce load size; Clean the lint filter; Select an appropriate drying program for the fabric type.
Detergent residue in dispenser	Low water pressure; Dispenser blocked.	Check water supply pressure; Clean the detergent dispenser drawer.

If the problem persists after trying these solutions, please contact Hisense customer support.


## 7. SPECIFICATIONS

Detailed technical specifications for the Hisense WD5S1045BW Washer Dryer.

Specification	Value
Model Number	WD5S1045BW
Wash Capacity	10.5 kg
Dry Capacity	6 kg
Dimensions (H x W x D)	84.5 x 59.5 x 59 cm
Item Weight	70 kg

Specification	Value
Energy Efficiency Class (Wash)	A
Energy Efficiency Class (Dry)	D
Maximum Rotational Speed	1400 RPM
Number of Washing Cycles	19
Control Type	Knob, Touch
Drum Material	Stainless Steel
Special Features	Inverter, Auto Dose, Hygiene Steam, Adjustable Leveling Legs, Smart Connectivity

For detailed energy information, please refer to the official EU Energy Label and Product Information Sheet:



**ENERG**

**HISENSE** WD5S1045BW

A

B

C

D

E

F

G

A

B

C

D

E

F

G

D

A

  **305** kWh/100

 **52** kWh/100

**6.0** kg



**10.5** kg

**89** L



**41** L

**7:59**



**3:59**



**A**BCDEFG



**A**BCD

2019/2014

UK Energy Label for Hisense WD5S1045BW, showing energy consumption and efficiency ratings.

Product Information Sheet					
COMMISSION DELEGATED REGULATION (EU) 2019/2014 with regard to energy labelling of household washing machines and household washer-dryers					
Supplier's name or trade mark: HISENSE					
Supplier's address: Gorenje gospodinjski aparati, d.o.o., Partizanska cesta 12, 3320 Velenje, SI					
Model identifier: WD5S1045BW/PL					
General product parameters:					
Parameter	Value		Parameter	Value	
Rated capacity (kg)	Rated capacity <sup>(b)</sup>	6,0	Dimensions in cm	Height	85
	Rated washing capacity <sup>(a)</sup>	10,5		Width	60
				Depth	59
Energy Efficiency Index	EEI <sub>W</sub> <sup>(a)</sup>	51,7	Energy efficiency class	EEI <sub>W</sub> <sup>(a)</sup>	A
	EEI <sub>WD</sub> <sup>(b)</sup>	66,4		EEI <sub>WD</sub> <sup>(b)</sup>	D
Washing efficiency index	I <sub>W</sub> <sup>(a)</sup>	1,031	Rinsing effectiveness (g/kg dry textile)	I <sub>R</sub> <sup>(a)</sup>	5,0
	J <sub>W</sub> <sup>(b)</sup>	1,031		J <sub>R</sub> <sup>(b)</sup>	5,0
Energy consumption in kWh per cycle, for the washing cycle of the household washer-dryer, using the eco 40-60 programme at a combination of full and partial loads. Actual energy consumption will depend on how the		0,520	Energy consumption in kWh per cycle, for the wash and dry cycle of the household washer-dryer at a combination of full and half loads. Actual energy consumption will depend on how the appliance is used		3,048

appliance is used					
Water consumption in litre per cycle, for the eco 40-60 programme at a combination of full and partial loads. Actual water consumption will depend on how the appliance is used and on the hardness of the water		41	Water consumption in litre per cycle, for the wash and dry cycle of the household washer-dryer at a combination of full and half loads. Actual water consumption will depend on how the appliance is used and on the hardness of the water		89
Maximum temperature inside the treated textile (°C) for the washing cycle of the household washer-dryer, using the eco 40-60 programme	Rated washing capacity	41	Maximum temperature inside the treated textile (°C) for the washing cycle of the household washer-dryer, using the wash and dry cycle.	Rated capacity	28
	Half	30		Half	24
	Quarter	24			
Spin speed (rpm) <sup>(a)</sup>	Rated washing capacity	1 400	Weighted remaining moisture content (%) <sup>(a)</sup>	52,5	
	Half	1 400			
	Quarter	1 400			
Eco 40-60 programme duration (h:min)	Rated washing capacity	3:59	Spin-drying efficiency class <sup>(a)</sup>	B	
	Half	3:00			
	Quarter	2:40			
Airborne acoustical noise emissions during the spinning phase for the eco 40-60 washing cycle at rated washing capacity (dB(A) re 1 pW)	72		wash and dry cycle duration (h:min)	Rated capacity	7:59
				Half	5:09
Type	Free-standing		Airborne acoustical noise emission class for the spinning phase for the eco 40-60 programme at rated washing capacity	A	
Off-mode (W) (if applicable)		0,49	Standby mode (W) (if applicable)	-	
Delay start (W) (if applicable)		3,95	Networked standby (W) (if applicable)	1,95	
<b>Minimum duration of the guarantee offered by the supplier: 24 months</b>					
<b>This product has been designed to release silver ions during the washing cycle</b>		<b>NO</b>			
<b>Additional information:</b>					
Weblink to the supplier's website, where the information in point 9 of Annex II to Regulation (EU) 2019/2023 is found: <a href="https://global.hisense.com/laundry">https://global.hisense.com/laundry</a>					
<sup>(a)</sup> for the eco 40-60 programme.					
<sup>(b)</sup> for the wash and dry cycle.					

Product Information Sheet for Hisense WD5S1045BW, providing detailed specifications and energy data.

You can find more information on the EPREL database: <https://eprel.ec.europa.eu/qr/1465669>

## 8. WARRANTY AND SUPPORT

Your Hisense WD5S1045BW Washer Dryer comes with a manufacturer's warranty.

### 8.1 Warranty Information

- The minimum duration of the guarantee offered by the supplier is 24 months.
- Please retain your proof of purchase for warranty claims.

## 8.2 Customer Support

For technical assistance, spare parts, or warranty claims, please contact Hisense customer support through their official website or the contact details provided in your warranty card.

For more information about Hisense products and support, visit the official Hisense store: [Hisense Store on Amazon.co.uk](#)