



[Manuals.plus](#) /

> [CARabc](#) /

> CARabc Wireless CarPlay Android Auto Adapter for Toyota Entune 2.0 (2014-2019) - User Manual

## CARabc BZ01

# CARabc Wireless CarPlay Android Auto Adapter (Model BZ01)

User Manual for Toyota Entune 2.0 / Touch2 Systems (2014-2019)

## 1. INTRODUCTION

---

This CARabc wireless adapter is designed to integrate Apple CarPlay and Android Auto functionalities into compatible Toyota vehicles manufactured between 2014 and 2019, specifically those equipped with the Entune 2.0 or Touch2 infotainment systems. The adapter allows you to access navigation, phone contacts, music, and other smartphone features directly on your car's display, utilizing voice commands (Siri or Google Assistant) and original vehicle controls for a safer and more convenient driving experience.

## 2. COMPATIBILITY

---

The CARabc adapter is compatible with specific Toyota models from 2014-2019 that feature the Entune 2.0 or Touch2 host system. It is crucial to verify your vehicle's infotainment system before installation.

### Important Compatibility Notes:

- Not compatible with Corolla 86140-02540 Fujitsu with a 7-inch screen.
- Not compatible with 4Runner models equipped with a Pioneer host system.
- Not compatible with Prius models equipped with an 11.6-inch screen.
- Not compatible with RAV4 models with 86100-42241 system.

### Compatible Toyota Models (2014-2019) with Touch2 & Entune 2.0 System (Must be Panasonic/Fujitsu/Pioneer):

Tundra

Highlander

RAV4

Tacoma

Camry

Corolla

Avalon

Prius

CH-R  
 Sienna  
 Yaris  
 Alphard  
 Avensis  
 Fortuner  
 Auris

# Compatible Model List

Brand: Toyota      System: Touch2 & Entune2.0      Screen: 6"/7"/8"

Model	Our product is compatible with the following TOYOTA cars(System:Touch 2/Entune 2.0) that <b>WITHOUT 360 camera/bird's eye view system</b> 2014–2019 Toyota Corolla (Not Compatible with 86140–02540 Fujitsu with 7" display) 2014–2019 Toyota 4Runner (Only fits Panasonic & Fujitsu, Pioneer is not support) 2016–2019 Toyota Prius (Not compatible with Prius w/ 11.6" screen equipped models) 2014–2018 Toyota RAV4 (Not compatible with 86100–42241)	
	2014–2019 Toyota Highlander 2016–2019 Toyota Prius c 2016–2017 Toyota Prius v 2015–2017 Toyota Sienna 2014–2019 Toyota Tacoma 2014–2018 Toyota Yaris 2016–2019 Toyota CH–R 2015–2017 Toyota Alphard 2014–2019 Toyota Avensis 2015–2019 Toyota Hilux	2015–2018 Toyota Avalon 2014–2019 Toyota Sequoia 2014–2019 Toyota Tundra 2017–2019 Toyota 86 2014–2019 Toyota Verso 2014–2019 Toyota Land Cruiser 2014–2017 Toyota Camry 2014–2019 Toyota Auris 2015–2019 Toyota Fortuner

## Compatible With Touch2 & Entune2.0 System

(Must be Panasonic/Fujitsu/Pioneer)



Entune 2.0 System



Touch 2 System

Image: Detailed list of compatible Toyota models and system requirements for the CARabc adapter.

### 3. PACKAGE CONTENTS

Please check the box for the following items:

- CARABC Adapter (x1)
- WiFi Antenna (x1)
- CUSB Line (x1)

- Power Cable (x1)

# Product Information

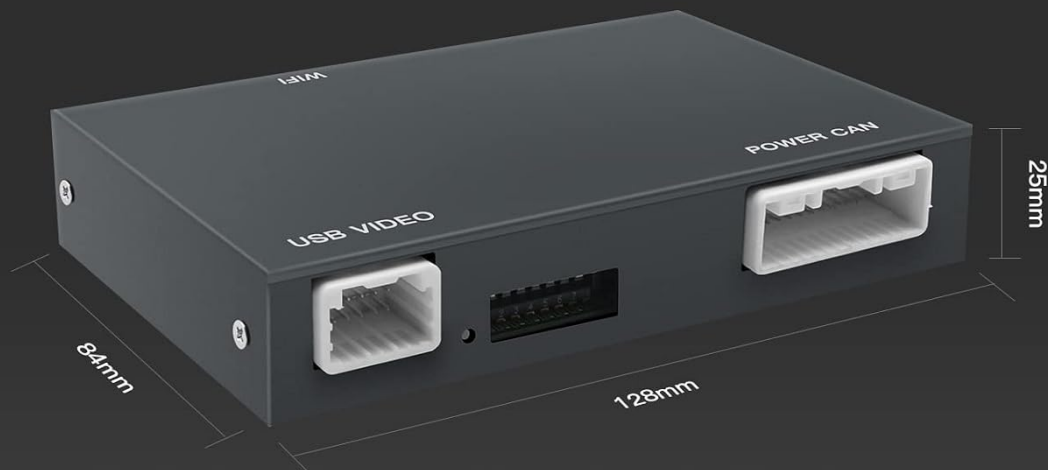
Brand: CARABC

Product Size: 128\*84\*25mm

Applicable Model: For Toyota

Main Function: CarPlay & Android Auto

Phone OS System Suitable: IOS & Android



USB Video Cable



Power cable

Image: The CARabc adapter unit with its dimensions, along with the USB Video Cable and Power Cable.

## 4. SETUP AND INSTALLATION

Installation of the CARabc adapter involves connecting it to your vehicle's existing infotainment system. It is recommended to consult a professional if you are unsure about any steps.

### Installation Steps:

1. **Prepare the Vehicle:** Ensure the vehicle's ignition is off and the battery is disconnected before beginning installation to prevent electrical damage.
2. **Access the Head Unit:** Carefully remove the necessary trim panels to access the rear of your car's main head unit (radio/infotainment system).
3. **Connect the Main Unit Cables:** Connect the provided 24-PIN, 10-PIN, and 28-PIN connectors from the CARabc wiring harness to the corresponding ports on your original car's main unit.
4. **Connect the Car's Plugs:** Connect the original car's 28-PIN, 10-PIN, and 24-PIN plugs to the designated ports on the

CARabc wiring harness.

5. **Connect USB Cable:** Attach the CUSB Line (USB Cable) to the adapter and route it to an accessible location, such as the glove compartment.
6. **Connect WiFi Antenna:** Connect the WiFi antenna to the adapter. Position the antenna in a location that ensures good signal reception, avoiding metal obstructions.
7. **Optional Connections:** If installing a forward-looking camera, connect it to the 'Forward Looking Input' port. Ensure GND (Ground) is properly connected.
8. **Secure the Adapter:** Find a secure and dry location to mount the CARabc adapter unit, ensuring it does not interfere with any moving parts or vehicle operation.
9. **Reconnect Battery:** Once all connections are secure, reconnect the vehicle's battery.
10. **Test Functionality:** Turn on the ignition and test the adapter's functionality as described in the Operating Instructions section.

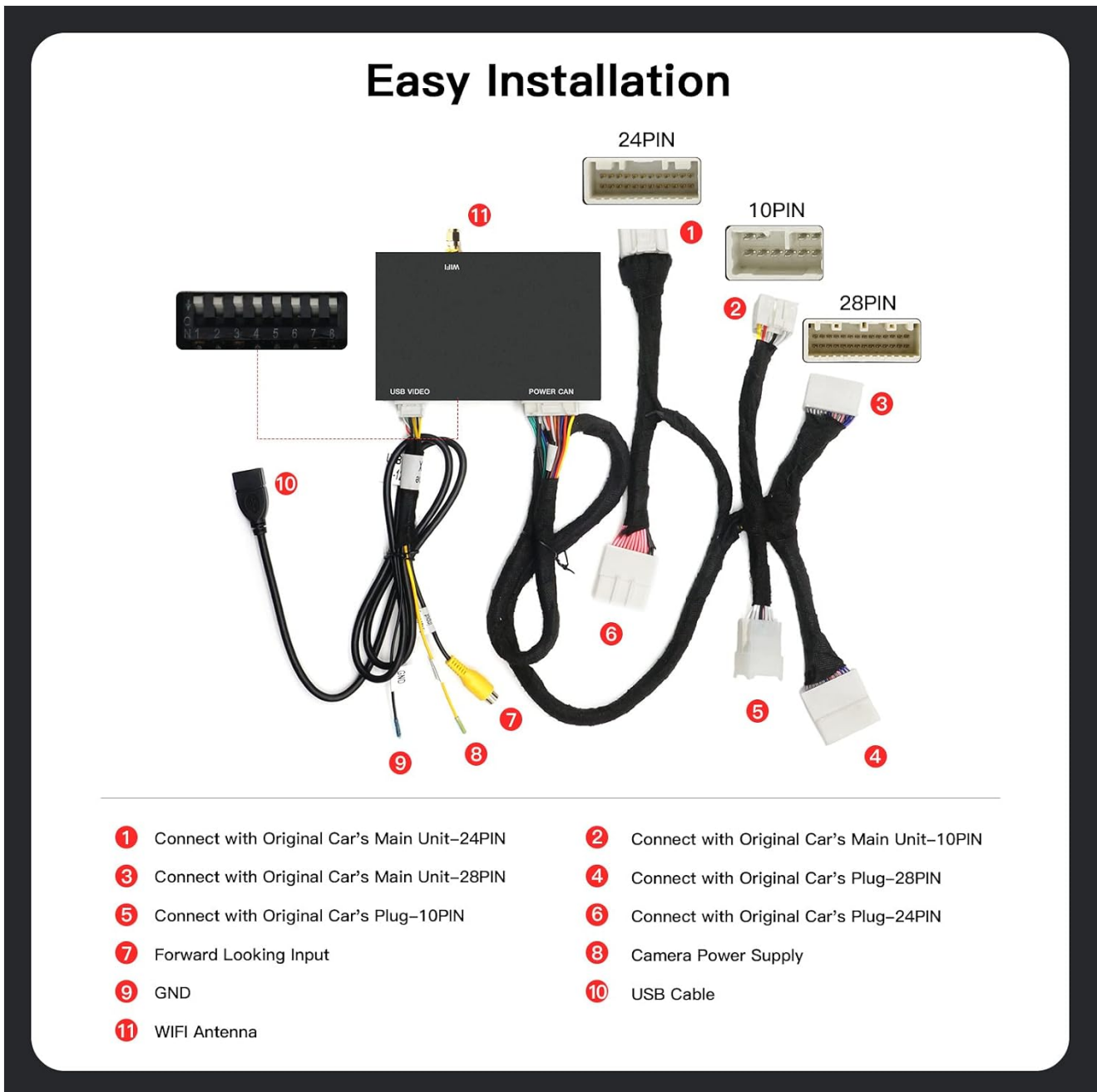


Image: Detailed wiring diagram illustrating the connections for the CARabc adapter to the car's main unit and plugs.

Your browser does not support the video tag.

Video: An official seller video demonstrating the installation and operation of a compatible CarPlay adapter for Toyota Touch2 & Entune 2.0 systems. This video shows the connection process and how the wireless CarPlay feature functions on the car's screen.

## 5. OPERATING INSTRUCTIONS

---

Once installed, the CARabc adapter allows you to use Apple CarPlay or Android Auto wirelessly.

### Connecting Your Smartphone:

1. **Power On:** Start your vehicle. The adapter should power on automatically.
2. **Activate CarPlay/Android Auto:** On your car's infotainment screen, select the AUX input or the designated CarPlay/Android Auto icon (if available after installation).
3. **Pair via Bluetooth:** On your smartphone, enable Bluetooth and search for the adapter's Bluetooth name (refer to the adapter's packaging or on-screen instructions for the exact name). Pair your phone with the adapter.
4. **Confirm Connection:** Once paired, your phone will prompt you to enable CarPlay or Android Auto. Confirm the connection. The CarPlay or Android Auto interface should now appear on your car's screen.

### Using CarPlay/Android Auto:

- **Navigation:** Use your preferred navigation apps (e.g., Apple Maps, Google Maps, Waze) directly on the car's screen.
- **Music & Media:** Play music, podcasts, and audiobooks from your smartphone apps.
- **Calls & Messages:** Make and receive calls, and send/receive messages using voice commands or the on-screen interface.
- **Voice Control:** Activate Siri (for Apple CarPlay) or Google Assistant (for Android Auto) by pressing the voice command button on your steering wheel or by saying the wake phrase.
- **Original Car Controls:** The adapter supports operation via your car's original steering wheel buttons, rotary knob, and touch screen (if applicable).

# WIRELESS CARPLAY & ANDROID AUTO

Suitable for iPhone and Android phones. Just connect to a compatible smartphone with USB to enjoy CarPlay or Android Auto function. Let you use siri or Google Assistant and have fun while focusing on the road.



Image: The car's infotainment screen displaying the wireless CarPlay interface, showing various app icons like Phone, Music, Maps, and Messages.

# SUPPORT ORIGINAL CAR BUTTON CONTROL

Please note that this adapter is only suitable for Toyota Entune 2.0&Touch 2 system.  
If your car does not have a Entune 2.0&Touch 2 connection, it will not work.



1.Support Original Car Button Control

2.Support Original Car Touch Screen Control

Image: Demonstrates how the CarPlay interface can be controlled using both the original car's steering wheel buttons and the touchscreen.

# Call Siri Anytime & Anywhere

Play music, telling jokes, call phone, ask questions  
Accompany you to pass the leisure in the car.



Image: Illustrates the use of Siri voice commands within the CarPlay environment for tasks like navigation, playing music, and making calls.

## 6. MAINTENANCE

---

To ensure the longevity and optimal performance of your CARabc adapter, follow these maintenance guidelines:

- **Keep Dry:** Avoid exposing the adapter to moisture or liquids.
- **Temperature Control:** Do not expose the device to extreme temperatures (hot or cold).
- **Cleaning:** Clean the adapter's exterior with a soft, dry cloth. Do not use harsh chemicals or abrasive cleaners.
- **Cable Integrity:** Periodically check all connected cables for any signs of wear or damage.

## 7. TROUBLESHOOTING

---

If you encounter issues with your CARabc adapter, refer to the following common troubleshooting steps:

- **No Display/Adapter Not Activating:**

- Ensure all power and video cables are securely connected.
- Verify the vehicle's battery was reconnected after installation.
- Try switching between the car's original Radio and AUX input modes multiple times.
- In some cases, a full vehicle restart (turning off and on the ignition) may resolve the issue.

- **Poor Image Quality:**

- The adapter utilizes the car's original screen resolution, which may be lower than modern smartphone displays. This is a limitation of the vehicle's hardware.
- Check if your car's display settings allow for adjustments to brightness, contrast, or color that might improve perceived quality.

- **Audio Quality Issues/Distortion:**

- Ensure your phone's volume and the car's volume are adjusted appropriately.
- Verify that the audio output from the adapter is correctly routed through the car's AUX input.
- Some users report slight differences in audio quality compared to direct Bluetooth connections. This can be influenced by the car's audio system and the adapter's processing.

- **Frequent Connection Loss (CarPlay/Android Auto):**

- Ensure the WiFi antenna is properly connected and positioned in an area with minimal obstruction for optimal signal.
- Confirm your smartphone's Bluetooth and Wi-Fi are enabled and functioning correctly.
- Try forgetting the device in your phone's Bluetooth settings and re-pairing.

- **Reverse Camera Not Activating:**

- Double-check all connections related to the reverse camera input on the adapter and the car's system.
- Ensure the adapter is receiving the correct signal to switch to the reverse camera view.

- **Cannot Use Car Radio and Navigation Simultaneously:**

- The adapter typically uses the car's AUX audio input. When the AUX input is active for CarPlay/Android Auto, the car's original radio tuner may be muted or inaccessible. This is a common characteristic of such integration systems.

## 8. SPECIFICATIONS

<b>Brand</b>	CARabc
<b>Model Number</b>	BZ01
<b>Product Dimensions</b>	15 x 15 x 4 cm
<b>Item Weight</b>	740 g
<b>Compatible Devices</b>	Smartphones with Android (6.0 or higher) or iOS (9 or higher) operating systems
<b>Specific Product Uses</b>	Car audio and video integration
<b>Connector Type</b>	USB Type A
<b>Color</b>	Silver
<b>UPC</b>	718519930342

## 9. WARRANTY AND SUPPORT

---

CARabc is committed to providing professional technical support for its products. If you have any questions regarding the installation, operation, or troubleshooting of your adapter after reviewing this manual and any available video instructions, please do not hesitate to contact CARabc customer support. Technical assistance is typically provided within 24 hours. For support, please refer to the contact information provided with your product or visit the official CARabc website.