

LEQISMART D12 Harmony

LEQISMART D12 Harmony Electric Scooter User Manual

Model: D12 Harmony

1. INTRODUCTION

Thank you for choosing the LEQISMART D12 Harmony Electric Scooter. This manual provides essential information for the safe operation, assembly, maintenance, and troubleshooting of your scooter. Please read this manual thoroughly before your first ride to ensure proper use and to maximize your riding experience.

2. SAFETY INFORMATION

Your safety is paramount. Always wear a helmet and appropriate protective gear when riding. Adhere to local traffic laws and regulations. Avoid riding in adverse weather conditions or on slippery surfaces.

- Always wear a helmet and other protective gear (knee pads, elbow pads).
- Do not ride under the influence of alcohol or drugs.
- Observe all local traffic laws and regulations.
- Maintain a safe speed and distance from other vehicles and pedestrians.
- Avoid sudden braking, especially at high speeds. The scooter features reliable brakes and ultra-bright headlights for visibility.
- Do not allow children under the recommended age or individuals exceeding the weight limit (100 kg) to operate the scooter.
- The D12 is built to withstand various weather conditions, but extreme conditions should be avoided.

3. PACKAGE CONTENTS

Please check the contents of your package carefully. If any items are missing or damaged, contact your retailer.

- LEQISMART D12 Harmony Electric Scooter (with integrated battery)

- Power Adapter/Charger
- User Manual
- Necessary assembly tools (if applicable)

4. PRODUCT OVERVIEW

The LEQISMART D12 Harmony Electric Scooter is designed for urban commuting, combining modern aesthetics with advanced technology. It features a robust motor, a 40 km range, and smart connectivity.



Figure 4.1: Side view of the LEQISMART D12 Harmony Electric Scooter. This image shows the overall design, including the handlebars, deck, and wheels.

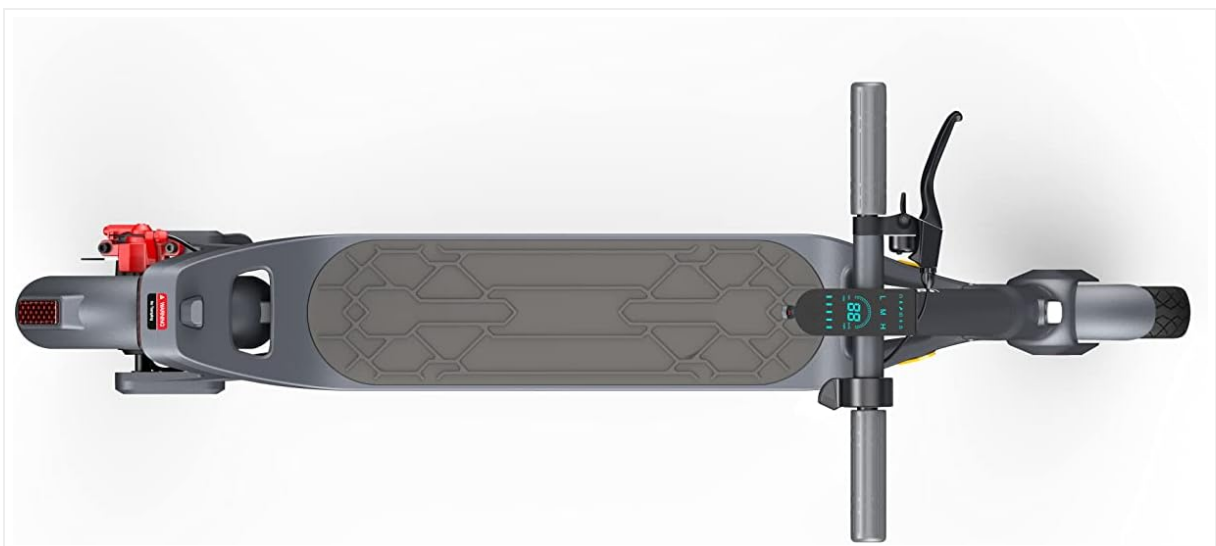


Figure 4.2: Top-down view of the LEQISMART D12 Harmony Electric Scooter. This perspective highlights the handlebar

Car Level Aluminum Body

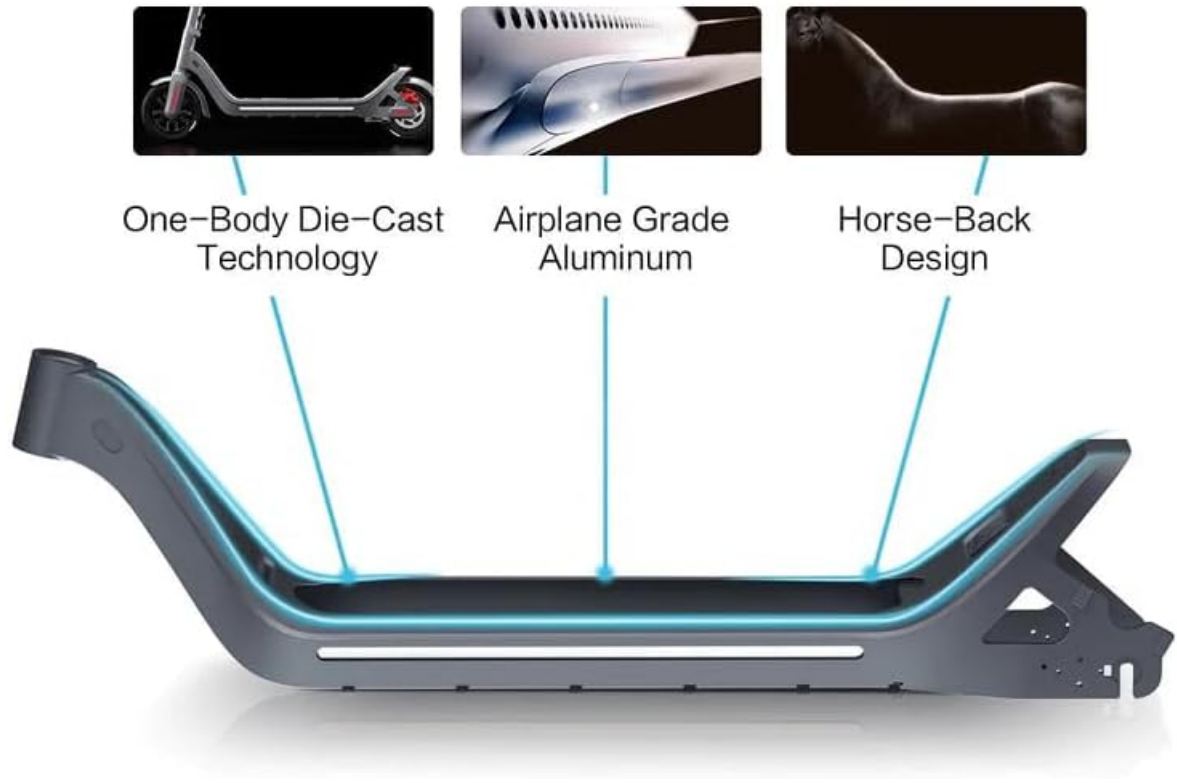


Figure 4.3: Illustration of the scooter's 'Car Level Aluminum Body' construction. This image details the one-body die-cast technology and airplane-grade aluminum used in the frame for durability and strength.

Key Features:

- **Impressive Range:** A robust battery capacity provides a range of 40 km on a single charge.
- **Powerful Motor:** Equipped with a robust motor capable of handling inclines and uneven terrain.
- **Easy Portability:** Foldable design for convenient transport and storage.
- **Safety Features:** Reliable brakes, ultra-bright headlights, and reflective stickers for rider safety and visibility.
- **All-Weather Performance:** Built to withstand various weather conditions.
- **Smart Connectivity:** Bluetooth pairing with the LEQISMART app for smartphone control.

5. SETUP

5.1 Unfolding the Scooter

Carefully remove the scooter from its packaging. Locate the folding mechanism, typically near the base of the handlebar stem. Release the latch and lift the handlebar stem until it locks securely into place. Ensure all locking mechanisms are engaged before use.



Figure 5.1: The LEQISMART D12 Harmony Electric Scooter in its folded state, demonstrating its portability.

5.2 Initial Charging

Before your first ride, fully charge the scooter's battery. Connect the power adapter to the charging port on the scooter and then plug it into a power outlet. The charging indicator on the scooter or charger will show the charging status. Disconnect the charger once the battery is full.

6. OPERATING INSTRUCTIONS

6.1 Power On/Off

Press and hold the power button on the handlebar display to turn the scooter on or off.



Figure 6.1: Close-up of the LEQISMART D12 Harmony Electric Scooter's handlebar display, showing speed, battery level, and riding mode indicators.

6.2 Riding Modes

The D12 Harmony Electric Scooter offers three distinct riding modes:

- **L (Energy-saving mode):** 0-6 km/h (0-3.7 mph) - Ideal for beginners or crowded areas.

- **M (Standard mode):** 6-15 km/h (3.7-9.3 mph) - Suitable for general commuting.
- **H (Motion mode):** 15-20 km/h (9.3-12.4 mph) - For experienced riders seeking higher speeds.

Switch between modes using the designated button on the handlebar display.

6.3 Starting Your Ride

To start, place one foot on the deck and push off with the other foot a few times to gain initial momentum. Once moving, gently press the accelerator lever. The motor will engage, and the scooter will accelerate.

6.4 Braking

To slow down or stop, use the brake lever on the handlebar. The scooter is equipped with a rear brake for effective stopping power.

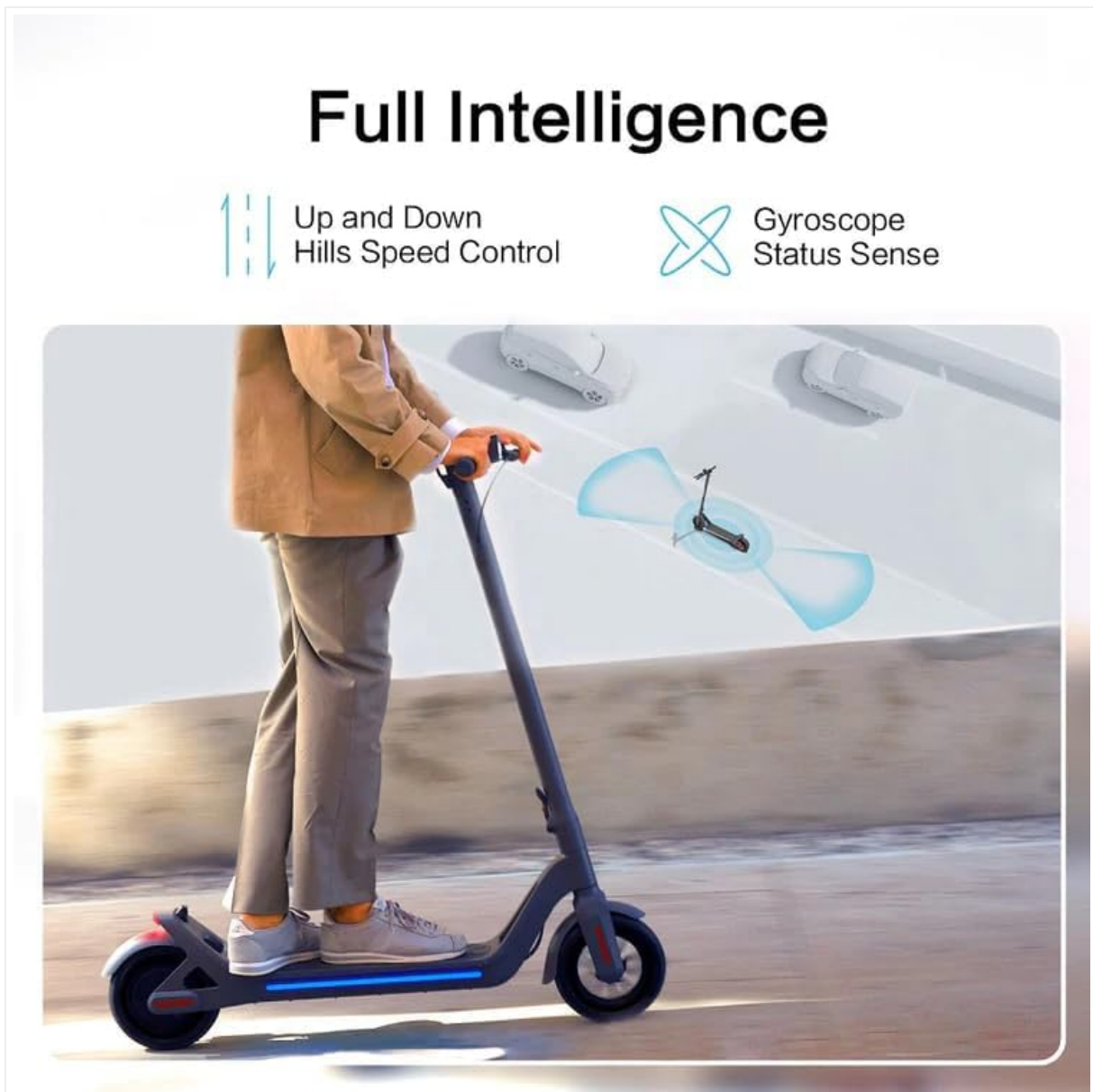


Figure 6.2: A rider demonstrating the LEQISMART D12 Harmony Electric Scooter's intelligent features, including speed control on hills and gyroscope status sensing.

6.5 Lighting System

The scooter features a 'Car Level Light System' for enhanced visibility and safety. This includes auto welcome lights, turn lights (L/R), and an auto 2.5m headlight that activates in the dark.



Figure 6.3: The LEQISMART D12 Harmony Electric Scooter showcasing its advanced lighting system, including front headlight and under-deck lights.

7. LEQISMART APP CONNECTION

Enhance your riding experience by connecting your LEQISMART D12 Harmony Electric Scooter to your smartphone via the LEQISMART app (HarmonyOS app).

7.1 Pairing Your Scooter

1. Download the LEQISMART app from your smartphone's app store.
2. Ensure Bluetooth is enabled on your smartphone.
3. Turn on your LEQISMART D12 scooter.
4. Open the LEQISMART app and follow the on-screen instructions to search for and pair with your scooter.

7.2 App Features

The LEQISMART app provides real-time access to key functions:

- **Speed Control:** Adjust and monitor your speed.

- **Navigation:** Access navigation features directly through the app.
- **Security:** Lock or unlock your scooter with a single tap when within 5 meters.
- **Startup Self-Check:** Perform diagnostic checks.
- **Remaining Range Display:** View estimated remaining battery range.
- **Riding Records Memory:** Track your riding history and mileage.

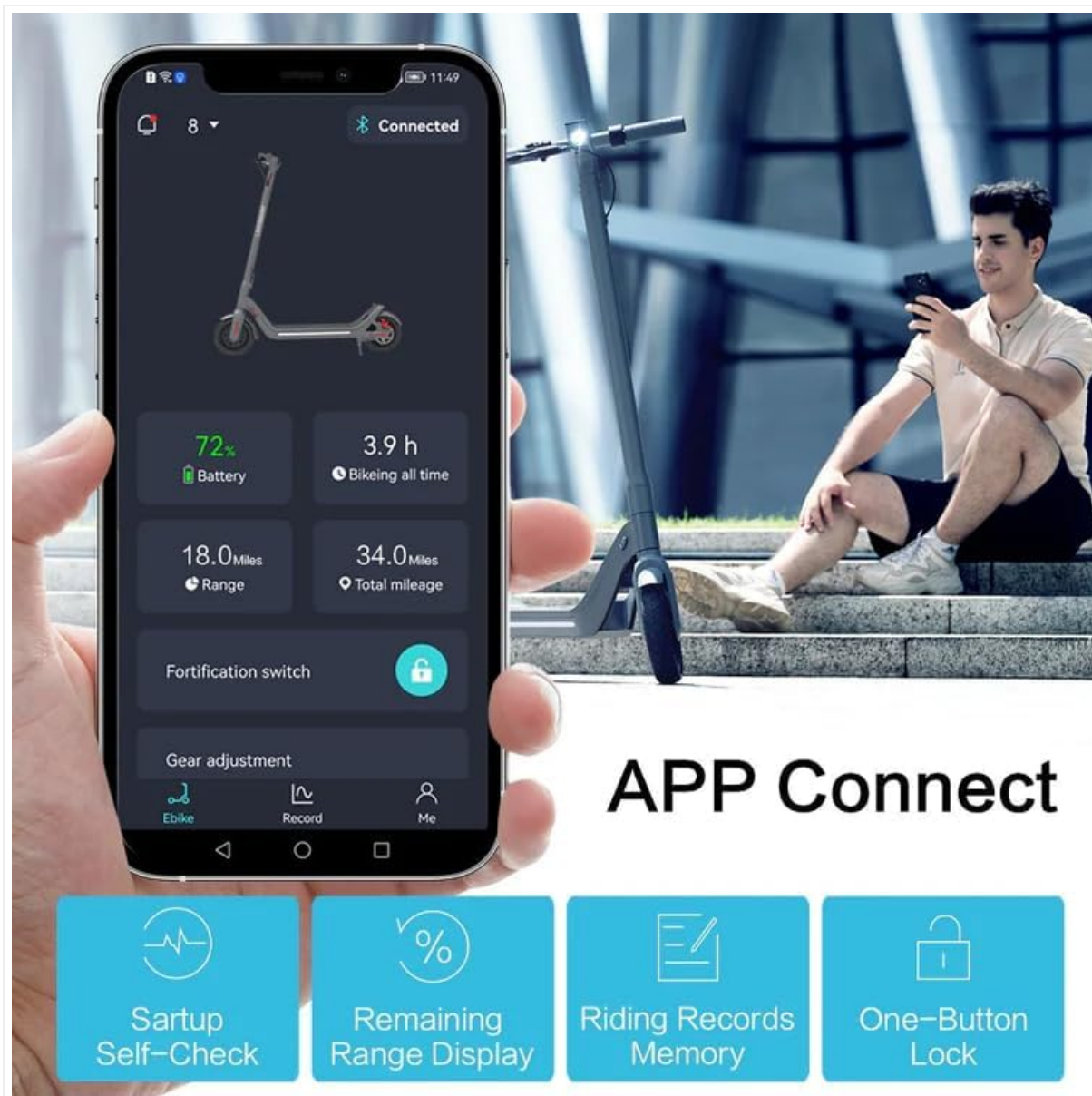


Figure 7.1: Screenshot of the LEQISMART app interface on a smartphone, showing battery status, range, total mileage, and control options like one-button lock.

8. MAINTENANCE

Regular maintenance ensures the longevity and optimal performance of your LEQISMART D12 Harmony Electric Scooter.

- **Cleaning:** Wipe the scooter with a damp cloth. Do not use high-pressure water or immerse the scooter in water.
- **Tires:** Check tire pressure regularly. The D12 uses pneumatic wheels.
- **Brakes:** Inspect brake functionality periodically. Ensure the rear brake is responsive.
- **Battery:** Charge the battery regularly, even if not in use, to maintain its health. Avoid completely draining the battery.

- **Fasteners:** Periodically check all screws and bolts to ensure they are tight.
- **Storage:** Store the scooter in a dry, cool place away from direct sunlight and extreme temperatures.

9. TROUBLESHOOTING

If you encounter issues with your scooter, refer to the following common problems and solutions:

Problem	Possible Cause	Solution
Scooter does not power on	Low battery; Loose connections	Charge the battery; Check all cable connections.
Reduced range	Under-inflated tires; Overloading; Cold weather	Inflate tires to recommended pressure; Reduce load; Battery performance decreases in cold.
Motor not engaging	Scooter not pushed off to gain momentum; Faulty accelerator	Ensure you push off to gain initial speed; Contact support if accelerator is unresponsive.
Brakes feel weak	Brake cable adjustment needed; Worn brake pads	Adjust brake cable tension; Inspect and replace brake pads if worn.
App connectivity issues	Bluetooth off; App not updated; Scooter not powered on	Ensure Bluetooth is on and scooter is powered; Update app; Restart scooter and phone.

For issues not listed here, please contact LEQISMART customer support.

10. SPECIFICATIONS

Detailed technical specifications for the LEQISMART D12 Harmony Electric Scooter:

Specification	Value
Model Name	HARMONY intelligente elektrische scooter (D12)
Brand	LEQISMART
Item Weight	19 Kilogram
Maximum Weight Capacity	100 Kilogram
Maximum Range	40 Kilometers
Number of Wheels	2
Wheel Size	9 Inch
Wheel Material	Polyurethane
Wheel Type	Pneumatic
Frame Material	Alloy Steel

Specification	Value
Handlebar Type	Adjustable
Grip Type	Non-slip
Brakes	Rear Brake
Suspension Type	Dual Suspension
Special Features	3 Riding Modes (L: 0-6km/h, M: 6-15km/h, H: 15-20km/h), Bluetooth App Connectivity (HarmonyOS app), 40 km Range
Recommended Use	Urban Transport, Daily Commute
Included Components	Battery (integrated)

11. WARRANTY AND SUPPORT

11.1 Warranty Information

The LEQISMART D12 Harmony Electric Scooter comes with a Lifetime Warranty. Please retain your proof of purchase for warranty claims. The warranty covers manufacturing defects under normal use conditions. It does not cover damage caused by misuse, accidents, unauthorized modifications, or normal wear and tear.

11.2 Customer Support

For technical assistance, warranty claims, or any questions regarding your LEQISMART D12 Harmony Electric Scooter, please contact your retailer or visit the official LEQISMART website for support contact information.