

Manuals+

[Q & A](#) | [Deep Search](#) | [Upload](#)

[manuals.plus](#) /

› [NICE DIGI](#) /

› [Tuya Smart Hub Bluetooth Gateway User Manual](#)

NICE DIGI Tuya Hub

Tuya Smart Hub Bluetooth Gateway User Manual

Model: Tuya Hub | Brand: NICE DIGI

INTRODUCTION

This manual provides comprehensive instructions for the installation, operation, and maintenance of your NICE DIGI Tuya Smart Hub Bluetooth Gateway. This device acts as a bridge, enabling remote control and voice control of your NICE DIGI smart door locks and other Tuya Bluetooth devices via Wi-Fi, Alexa, and Google Assistant. Please read this manual thoroughly before use to ensure proper functionality and safety.



Image: The Tuya Smart Hub Bluetooth Gateway, a compact white device, shown alongside a smartphone displaying its control application. This illustrates the hub's primary function of connecting smart devices to a mobile interface.

PACKAGE CONTENTS

Please verify that all items listed below are included in your package. If any items are missing or damaged, please contact customer support.

- Smart Gateway x 1
- User Guide x 1
- Micro USB Cable x 1

Note: The Micro USB Power Adapter is NOT included and must be supplied separately.

What's in the Box?

The Micro USB Power Adapter
(NOT INCLUDED)



The User Manual*1



The Micro USB Cable*1



The Gateway*1

Image: A visual representation of the items included in the product box: the Smart Gateway unit, a user manual, and a Micro USB charging cable. This confirms the components users should expect to find.

PRODUCT DETAILS AND COMPONENTS

The Tuya Smart Hub Bluetooth Gateway is designed for ease of use and integration into your smart home system. Familiarize yourself with its physical features:

- **Bluetooth Status Indicator:** Blue LED, indicates Bluetooth connection status.
- **Wi-Fi Status Indicator:** Red LED, indicates Wi-Fi connection status.
- **Power Jack:** Micro USB port for power input.
- **Reset Key:** Button for resetting the device to factory settings.

Product Details

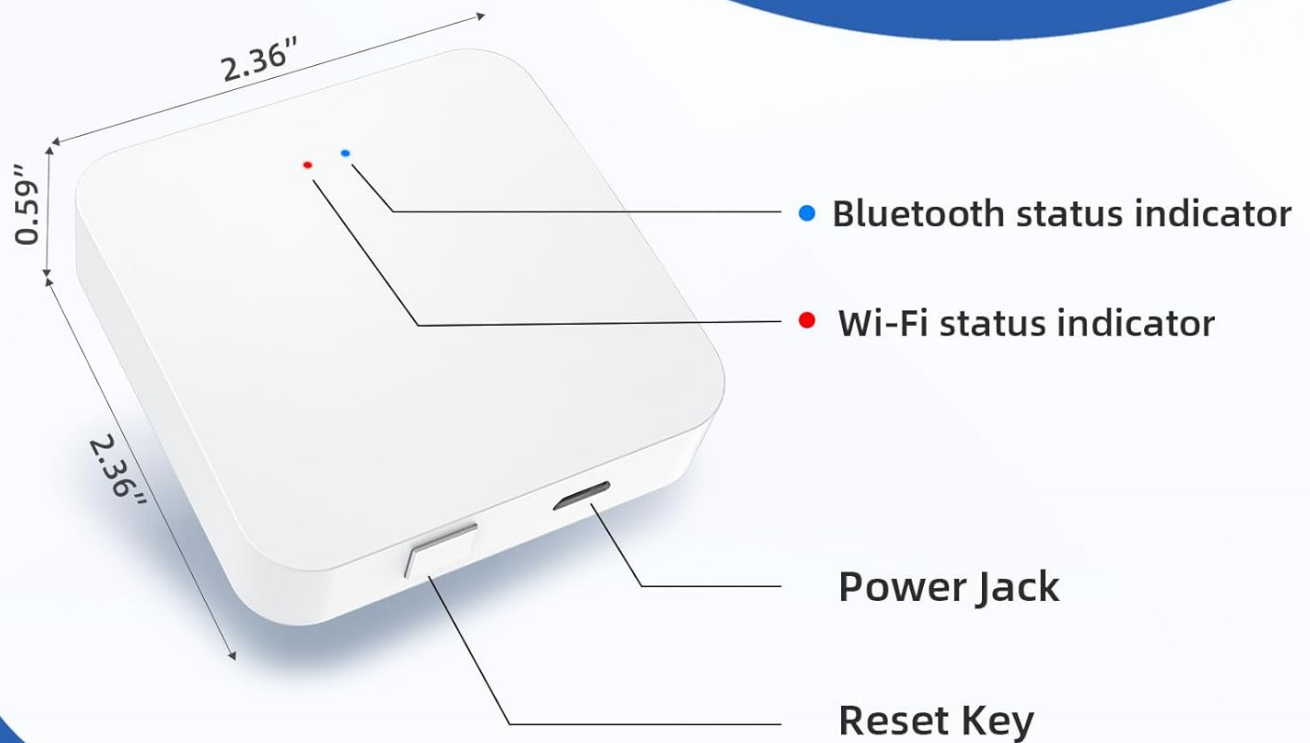


Image: A detailed diagram of the Smart Gateway, highlighting its dimensions (2.36" x 2.36" x 0.59") and labeling key components such as the Bluetooth status indicator, Wi-Fi status indicator, power jack, and reset key.

SETUP INSTRUCTIONS

Follow these steps to set up your Tuya Smart Hub Bluetooth Gateway:

1. Step 1: Download NICE DIGI App

Download the NICE DIGI App from your smartphone's app store. This app is compatible with Smart Life or Tuya Smart App.

2. Step 2: Connect Wi-Fi and Bluetooth

Ensure your smartphone's Bluetooth is enabled. Power on the gateway by connecting it to a power source using the Micro USB cable.

3. Step 3: Click "+" for Automatic Search

Open the NICE DIGI App. The gateway should be automatically detected. Click on the "+" icon to initiate the search for new devices.

4. Step 4: Add Existing Device

Once detected, select the gateway and enter your 2.4GHz Wi-Fi network credentials. The connection should be completed within approximately one minute.

Important Note: The smart gateway operates exclusively on a 2.4GHz network (Not 5GHz). Please ensure your Wi-Fi router is configured for 2.4GHz. The smart hub is only compatible with Tuya devices.

Easy Setup



STEP 1

Download NICE DIGI App



STEP 2

Connect Wi-Fi and Bluetooth



STEP 3

Click "+" for Automatic Search



STEP 4

Add Existing Device

Image: A visual guide illustrating the four easy steps for setting up the Smart Gateway: downloading the app, connecting Wi-Fi and Bluetooth, using the automatic search function, and adding the device.

OPERATING INSTRUCTIONS

App Remote Control

After successfully pairing the WiFi gateway, you can remotely control your smart door lock and other connected Tuya devices through the NICE DIGI App from any location. This allows you to monitor unlocking activities in real-time, enhancing your home security even when you are away.

Remote Control Anywhere



Image: A smartphone screen showing the "unlock" function for a smart door lock, demonstrating the remote control capability of the gateway via the mobile application.

Voice Control via Alexa & Google Assistant

Once your smart Bluetooth gateway is connected, you can conveniently control your NICE DIGI smart lock and other Tuya smart devices using voice commands through Amazon Alexa or Google Home assistant. Enjoy the ease of a smart lifestyle with simple verbal instructions.

Voice Control with Alexa

Alexa,
Lock the Front Door

OK



Image: A woman interacting with an Alexa device, demonstrating how voice commands like "Alexa, Lock the Front Door" can be used to control smart devices connected through the gateway.

Smart Home Linkage

The Tuya Smart Hub facilitates seamless integration with various Tuya-compatible smart home devices. This allows for the creation of automated routines and scenarios, linking your smart lock with other devices like lighting, doorbell cameras, and smart cameras for a comprehensive smart home experience.



Image: An illustration depicting the concept of smart home linkage, showing how the gateway connects a smart lock, light source, doorbell camera, and smart camera to create an integrated smart home system.

MAINTENANCE

To ensure optimal performance and longevity of your Tuya Smart Hub Bluetooth Gateway, consider the following maintenance guidelines:

- Keep the device in a dry environment, away from excessive moisture or humidity.
- Clean the exterior with a soft, dry cloth. Avoid using abrasive cleaners or solvents.
- Ensure proper ventilation around the device to prevent overheating.
- Regularly check for firmware updates through the NICE DIGI App to ensure the best performance and security.

TROUBLESHOOTING

If you encounter issues with your Tuya Smart Hub, refer to the following common troubleshooting steps:

- **Device Not Connecting to Wi-Fi:**

- Ensure your Wi-Fi network is 2.4GHz. The gateway does not support 5GHz networks.
- Check your Wi-Fi password for accuracy.
- Move the gateway closer to your Wi-Fi router.
- Restart your Wi-Fi router and the gateway.

- **Bluetooth Devices Not Pairing:**

- Ensure Bluetooth is enabled on your smartphone and the gateway.
- Verify that the Bluetooth device you are trying to pair is a Tuya-compatible device.
- Restart the gateway and try pairing again.

- **Voice Control Not Working:**

- Confirm that the gateway is properly linked to your Alexa or Google Home account.
- Check your internet connection.
- Ensure the voice commands are clear and match the device's recognized commands.

- **Gateway Unresponsive:**

- Unplug the power cable, wait 10 seconds, and plug it back in.
- If issues persist, perform a factory reset using the Reset Key (refer to Product Details section). Note that a factory reset will erase all settings and require re-setup.

For further assistance, please contact NICE DIGI customer support.

SPECIFICATIONS

Feature	Detail
Brand	NICE DIGI
Model Name	Tuya Hub
Connectivity Protocol	Bluetooth, Wi-Fi (2.4GHz only)
Control Method	App, Voice (Alexa, Google Assistant)
Special Features	APP Remote Control, Smart Home Linkage, Voice Control
Dimensions (L x W x H)	2 x 0.3 x 0.2 inches (approx. 5.08 x 0.76 x 0.51 cm)
Item Weight	2.08 ounces (approx. 59 grams)
Material	Plastic
Color	White
Power Input	Micro USB (Adapter not included)
Compatibility	Tuya devices only

WARRANTY AND SUPPORT

NICE DIGI is committed to providing reliable security and style. Your purchase is protected by the following:

- **30-Day Money-Back Guarantee:** If you are not satisfied with your product, you may return it within 30 days for a full refund.
- **1-Year Product Coverage:** The product is covered against manufacturing defects for one year from the date of purchase.
- **Lifetime After-Sales Support:** NICE DIGI provides ongoing support for the lifetime of the product.

For any inquiries, technical assistance, or warranty claims, please contact NICE DIGI customer service through the contact information provided on their official website or within the NICE DIGI App.

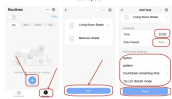


© 2023 NICE DIGI. All rights reserved.

Related Documents - Tuya Hub

	<p>NICE DIGI Smart Gateway User Manual and Setup Guide</p> <p>Comprehensive user manual for the NICE DIGI Smart Gateway, detailing product features, installation, connection to the NICE DIGI app, and integration with Alexa for smart home control.</p>
	<p>Nice Digi Smart Lever X1 User Manual</p> <p>Comprehensive user manual for the Nice Digi Smart Lever X1, covering installation, setup, app usage, features, and troubleshooting for this keyless entry smart lock.</p>
	<p>NICE DIGI Smart Lever X1 User Manual and Installation Guide</p> <p>Comprehensive user manual and installation guide for the NICE DIGI Smart Lever X1, covering setup, product features, app integration, and troubleshooting. Learn how to install and operate your smart lock.</p>
	<p>NICE DIGI Smart Knob Y1 User Manual and Installation Guide</p> <p>Comprehensive user manual and installation guide for the NICE DIGI Smart Knob Y1, covering setup, app pairing, and usage instructions for smart home security.</p>
	<p>NICE DIGI Smart Lever Z1A User Manual and Installation Guide</p> <p>This user manual provides comprehensive installation and programming instructions for the NICE DIGI Smart Lever Model Z1A. Learn how to install, set up, and operate your smart lock for enhanced home security.</p>

Set cycle



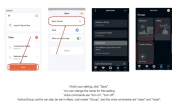
Click "Tutorial", and then click  and device settings cycle count. (Set security questions here, as well, and the time to return.)

Set group control on TUFVA app



10

Set group control on TUYA app



IndicaDrug-portal provides the following information:

DIY scene on TUYA app – weather



10. *How many people are there in your family?*

Off score on TUVA app – weather



10

he on TUYA app – change of home location



DIY scene on TUYA app – timing



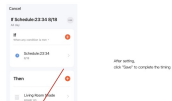
about the number of days you work to report results that the setting is a
school after work

Off score on TUYA app – timing



Fig. 4. Δ vs. Δ for Δ vs. Δ .

1 score on TGA app - 1111g



Livingston Trade

on graffiti app – when device status changes



© 2000 Blackwell Science Ltd