

[Manuals.plus](#) /

- › [Trust](#) /
- › Trust Lyra Multidevice Bluetooth Keyboard User Manual

Trust Lyra (Model 24708)

Trust Lyra Multidevice Bluetooth Keyboard User Manual

Model: 24708

INTRODUCTION

The Trust Lyra Multidevice Bluetooth Keyboard is a compact, rechargeable wireless keyboard designed for versatile use across multiple operating systems and devices. Made with 85% recycled plastics, it offers a sustainable and efficient typing experience. This manual provides detailed instructions for setting up, operating, maintaining, and troubleshooting your keyboard.



The Trust Lyra keyboard is constructed with 85% recycled plastics, contributing to environmental sustainability.

WHAT'S IN THE BOX

Please check the package contents to ensure all items are present:

- Trust Lyra Multidevice Bluetooth Keyboard
- USB Micro Receiver
- USB-C Charging Cable
- User Manual



The Trust Lyra keyboard and its included accessories are packaged securely.

SETUP

1. Initial Charging

Before first use, fully charge the keyboard using the provided USB-C charging cable. Connect the USB-C end to the keyboard's charging port and the USB-A end to a power source (e.g., computer USB port, USB wall adapter).



Connect the USB-C cable to the keyboard for charging. A full charge can last up to 6 months.

2. Power On/Off

Locate the power switch on the keyboard. Slide it to the 'ON' position to power on the keyboard. Slide it to 'OFF' when not in use to conserve battery.

3. Connecting to Devices

The Trust Lyra keyboard supports connection to up to three devices simultaneously via a USB receiver and two Bluetooth channels.

a. USB Receiver Connection (2.4 GHz Wireless)

1. Locate the USB micro receiver, usually stored in a compartment on the keyboard.
2. Plug the USB receiver into an available USB port on your computer or device.
3. The keyboard should automatically connect to the device. The indicator light for the USB channel (often labeled '1' or 'USB') will illuminate briefly.

b. Bluetooth Connection (Channels 2 & 3)

1. Ensure the keyboard is powered on.
2. Press and hold the **Fn** key and then press either the **Bluetooth 2** or **Bluetooth 3** key (usually F2 or F3 with a Bluetooth icon) for 3-5 seconds until the corresponding indicator light starts blinking rapidly. This indicates pairing mode.
3. On your device (laptop, tablet, smartphone), go to Bluetooth settings and enable Bluetooth.
4. Search for new devices. You should see "Trust Lyra" or a similar name appear in the list.
5. Select "Trust Lyra" to pair. If prompted, enter the pairing code displayed on your screen.
6. Once paired, the indicator light will stop blinking and remain solid for a few seconds, then turn off.



Connect your keyboard to up to three devices simultaneously using the USB receiver and two Bluetooth channels.

OPERATING INSTRUCTIONS

1. Switching Between Connected Devices

To switch between your connected devices, simply press the corresponding channel key:

- Press **Fn + F1** for the USB receiver connected device.
- Press **Fn + F2** for the first Bluetooth connected device.
- Press **Fn + F3** for the second Bluetooth connected device.

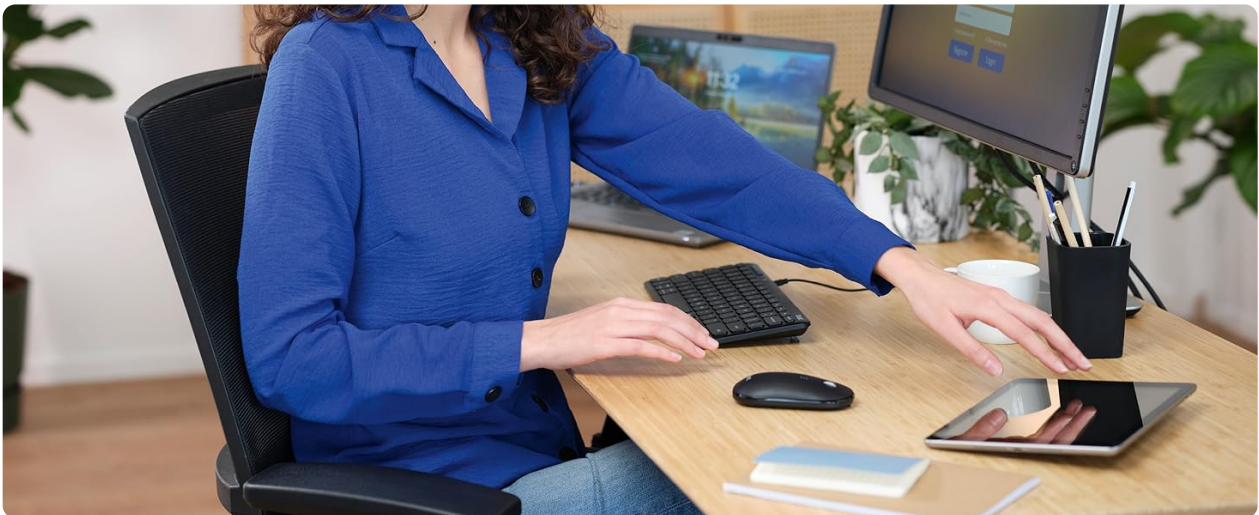


Easily switch between your connected devices using the dedicated function keys.

2. Operating System Compatibility

The Trust Lyra keyboard is compatible with multiple operating systems. To optimize key functions for your specific OS, use the following combinations:

- **Fn + Q** for iOS / iPadOS
- **Fn + W** for Windows
- **Fn + E** for Android
- **Fn + R** for macOS / Chrome OS



The keyboard supports multiple operating systems including Windows, iOS, iPadOS, macOS, Android, and Chrome OS.

3. Multimedia and Function Keys

The keyboard features 12 multimedia keys for quick access to common functions. These keys are typically activated by pressing the **Fn** key in combination with the F-keys (F1-F12).

- **Fn + F4:** Mute
- **Fn + F5:** Volume Down
- **Fn + F6:** Volume Up
- **Fn + F7:** Previous Track
- **Fn + F8:** Play/Pause
- **Fn + F9:** Next Track
- *Other F-keys may have system-specific functions.*



The compact design features low-profile scissor keys and dedicated multimedia functions for enhanced productivity.

MAINTENANCE

1. Cleaning

To clean your keyboard, power it off and disconnect any cables. Use a soft, lint-free cloth slightly dampened with water or a mild cleaning solution. Avoid harsh chemicals, abrasive materials, or excessive moisture. Do not spray cleaners directly onto the keyboard.

2. Battery Care

- Recharge the keyboard when the battery indicator light shows low power.
- Avoid fully discharging the battery frequently.
- If storing the keyboard for an extended period, charge it to about 50% and store it in a cool, dry place.

TROUBLESHOOTING

1. Keyboard Not Connecting

- **Check Power:** Ensure the keyboard is powered on and has sufficient battery charge.
- **USB Receiver:** For 2.4 GHz connection, ensure the USB receiver is securely plugged into the device and the keyboard is set to the correct channel (Fn + F1). Try a different USB port.
- **Bluetooth:** For Bluetooth connection, ensure Bluetooth is enabled on your device. Put the keyboard into pairing mode (Fn + F2/F3 for 3-5 seconds) and re-pair it. Ensure the keyboard is set to the correct Bluetooth channel.

- **Interference:** Move the keyboard closer to your device and away from other wireless devices that might cause interference.

2. Keys Not Responding or Typing Incorrectly

- **Battery Level:** Low battery can affect key responsiveness. Recharge the keyboard.
- **OS Mode:** Ensure the keyboard is set to the correct operating system mode (Fn + Q/W/E/R).
- **Cleaning:** Dust or debris under the keys can cause issues. Clean the keyboard as described in the Maintenance section.
- **Reconnection:** Try disconnecting and reconnecting the keyboard to your device.

3. Battery Not Charging

- **Cable Check:** Ensure the USB-C charging cable is properly connected to both the keyboard and the power source.
- **Power Source:** Try a different USB port or wall adapter.
- **Cable Damage:** Inspect the charging cable for any visible damage. Use a different USB-C cable if available.

SPECIFICATIONS

Feature	Specification
Brand	Trust
Model Name	Lyra
Model Number	24708
Connectivity Technology	Bluetooth, RF (2.4 GHz via USB receiver)
Compatible Devices	Laptop, Mac, PC, Smartphone, Tablet
Keyboard Description	Multifunction
Recommended Uses	Business, Multimedia, Daily Use
Special Features	Rechargeable Battery, Compact Size, Sustainable (85% recycled plastic), Multi-OS Support, Triple Connection (1x USB receiver & 2x Bluetooth)
Color	Black
Product Dimensions	28.6L x 12.6W x 1.7H cm
Material	Plastic
Power Source	Battery Powered
Switch Type	Scissor Switch

Feature	Specification
Keyboard Layout	QWERTY (Italian Layout)
Hand Orientation	Ambidextrous
Number of Keys	81
Minimum OS Requirement	Android 10.0
Item Weight	301 Grams

WARRANTY AND SUPPORT

1. Warranty Information

The Trust Lyra Multidevice Bluetooth Keyboard comes with a **2-year manufacturer's warranty** from the date of purchase. This warranty covers defects in materials and workmanship under normal use. It does not cover damage caused by misuse, accidents, unauthorized modifications, or normal wear and tear.

Please retain your proof of purchase for warranty claims.

2. Customer Support

For further assistance, technical support, or warranty inquiries, please visit the official Trust website:

www.trust.com/support

You may also refer to the digital user manual (PDF) and safety information available on the product page or Trust's support section.