



Manuals.plus /

› sixcow /

› User Manual for sixcow 1006801R Control Board

sixcow 1006801R

User Manual for sixcow 1006801R Control Board

Model: **1006801R** | Brand: **sixcow**

PRODUCT OVERVIEW

The sixcow 1006801R Control Board is a high-quality replacement printed circuit board designed for various electric furnace and air handler models. It serves as a direct replacement for OE Part # 1006801R and 1006800/1, ensuring efficient and reliable operation of your heating system.

Key Features

- **Wide Compatibility:** Perfect replacement for Nordyne, Gibson, Frigidaire, Westinghouse, Philco, Tappan, Intertherm, and Miller brand furnaces.
- **Advanced Programming:** Outfitted with advanced programming capabilities to ensure efficient temperature changes in your home.
- **Durable Construction:** Constructed of premium-grade PCB material, offering excellent moisture resistance for stable performance and reliable durability.
- **Easy Installation:** Designed for simple and hassle-free installation, working well with both original and updated wiring.

Compatibility

This single-stage circuit board is compatible with a wide range of furnace and air handler models, including:

- **E7 Series Electric Furnaces:** Models -010, -012, -015, -017, -020, -023. This includes E7EB, E7EM, E7ED, and E7EU series (e.g., E7EBE-010H, E7EM-010H1, E7ED-010H1, E7EU-010H1, and subsequent models).
- **FSHE Air Handlers:** Compatible with 12kW / 15kW / 17kW / 20kW / 23kW Electric Furnaces with FSHE ECM (240VAC 1Ph/60Hz).
- **B6 Series Air Handlers:** Suitable for B6BMM0 Series (e.g., B6BMM060K-C), B6BMMX Series (e.g., B6BMMX60K-C), and B6EMMX Series (e.g., B6EMMX24K-A through B6EMMX60K-C). *Note: For B6BMMX Series Air Handlers, use on units produced on or before 12/31/2017.*



1006801R Control Board

Perfect Replacement for Furnace & Air Handler Models E7 & FSHE.

Replace OE Part Number: 1006801R



E7EB Series

E7EBE-010H
E7EBE-012H
E7EBE-015H
E7EBE-017H
E7EBE-020H
E7EBE-023H

E7ED Series

E7ED-010H1
E7ED-012H1
E7ED-015H1
E7ED-017H1
E7ED-020H1
E7ED-023H1

E7EM Series

E7EM-010H1
E7EM-012H1
E7EM-015H1
E7EM-017H1
E7EM-020H1
E7EM-023H1

E7EU Series

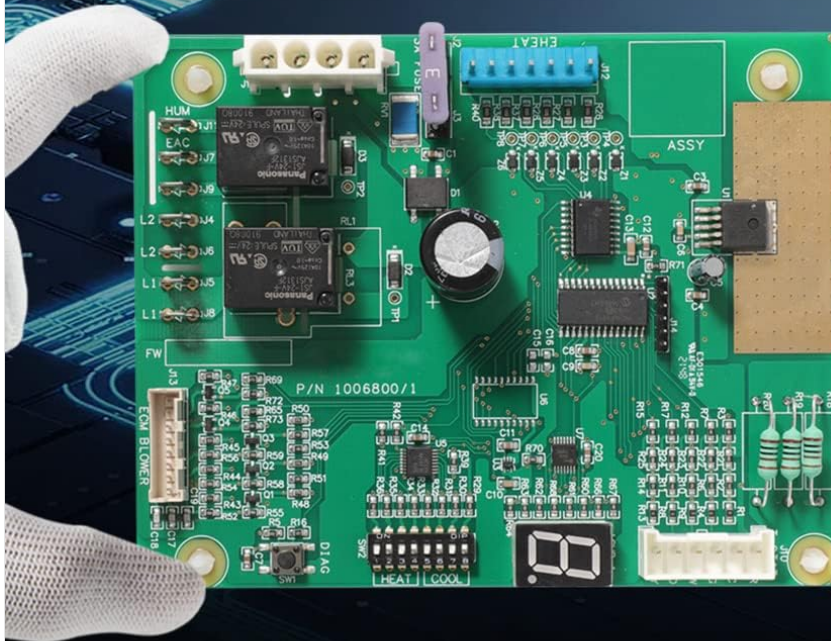
E7EU-010H1
E7EU-012H1
E7EU-015H1
E7EU-017H1
E7EU-020H1
E7EU-023H1

Image: The 1006801R Control Board, illustrating its compatibility with various E7 series furnace models.



Control Board Upgrade

Effectively improve furnace blower running efficiency.



Control Board

Moisture Resistance
Safe and secure



Back

Dustproof & Robust
Great Protection

Compatible with **12kW / 15kW / 17kW / 20kW / 23kW** Electric Furnace
with **FSHE ECM (240VAC 1Ph/60Hz)**.

Image: Features of the control board, including moisture resistance and a robust, dustproof back for enhanced protection.



Perfect Design

Outfitted with advanced programming capabilities to ensure efficient temperature changes in your home.

Compatible with: E7 Series electric furnace

Models: -010, -012, -015, -017, -020, -023

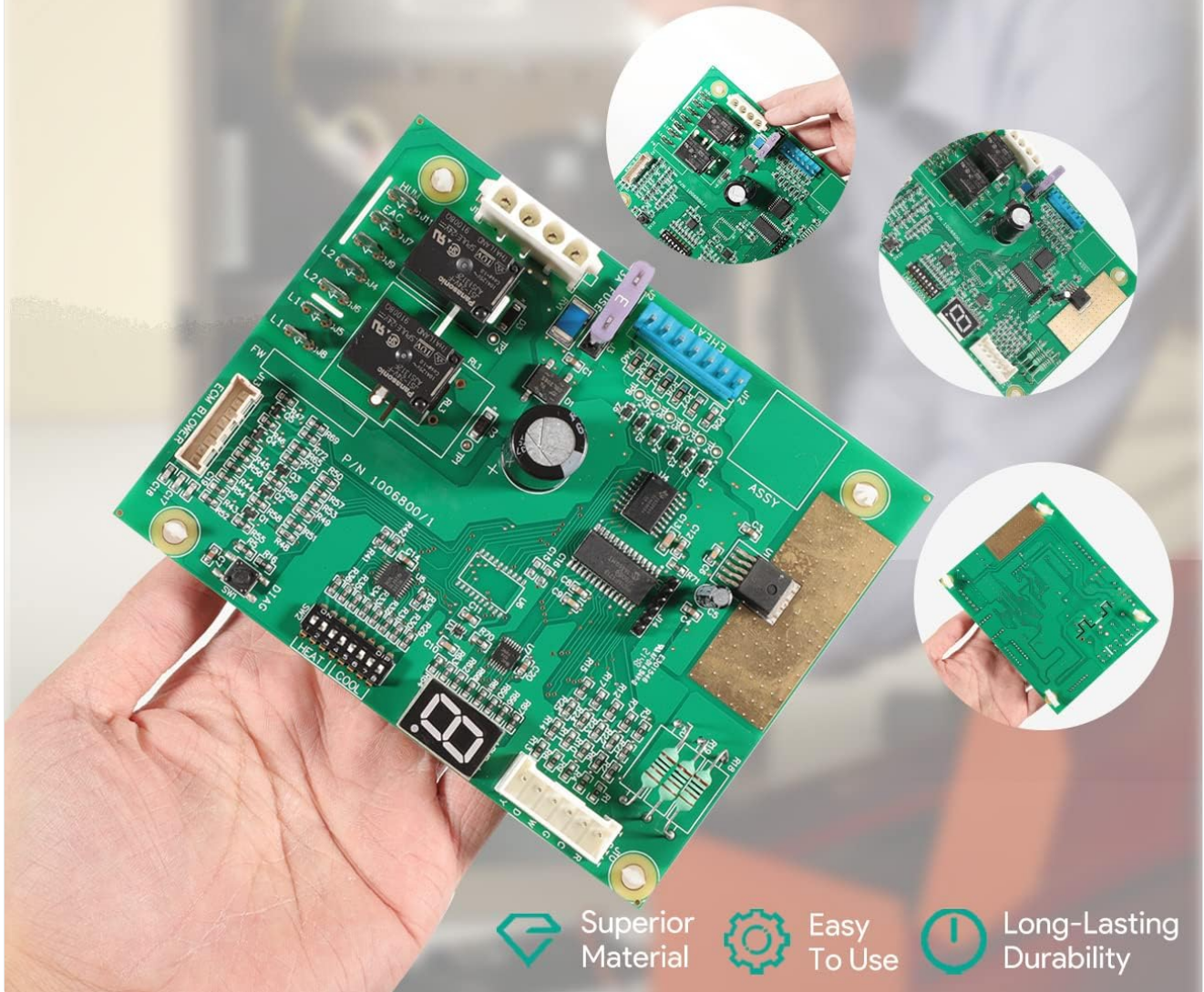


Image: Demonstrating the compact and user-friendly design of the control board, highlighting its superior material and long-lasting durability.

INSTALLATION GUIDE

The 1006801R Control Board is designed for direct replacement and easy installation. Follow these steps carefully to ensure proper and safe setup.

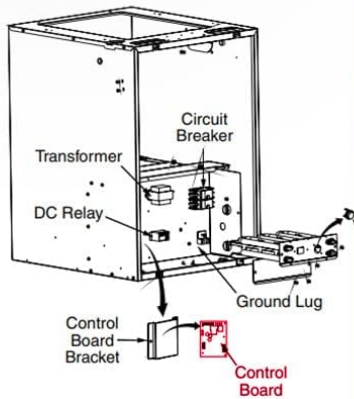
General Installation Steps



Easy Installation

No any complicated setup.

Wiring Diagram



Easy to Install

STEP 1

Remove wires and old control board.

STEP 2

Install new board and connect wires.



Technique Details

Describe:

Compatible with : E7 SERIES ELECTRIC FURNACE

MODELS : -010, -012, -015, -017, -020, -023

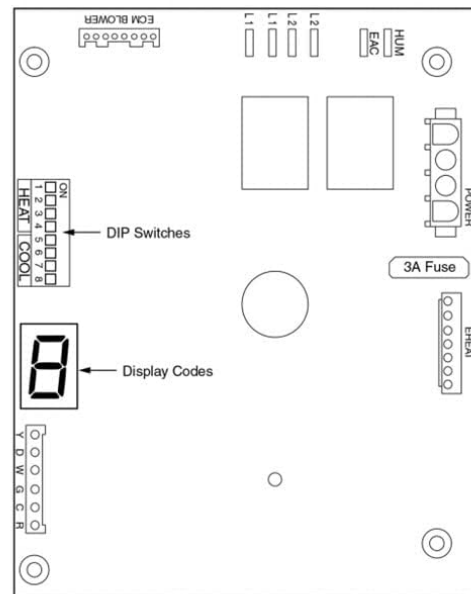
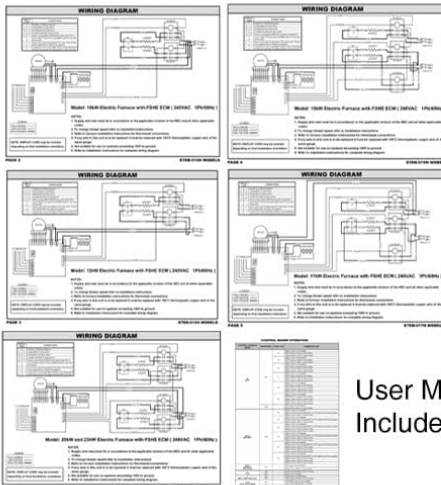


Image: Simplified installation diagram showing the wiring and the two primary steps for replacing the control board.

- Step 1: Remove Wires and Old Control Board.** Before beginning, ensure the power to the furnace is completely shut off at the circuit breaker. Carefully disconnect all wires from the existing control board and then remove the old board.
- Step 2: Install New Board and Connect Wires.** Position the new 1006801R control board in place. Reconnect all wires to their corresponding terminals on the new board, ensuring a secure fit. Refer to your furnace's specific wiring diagram if needed.

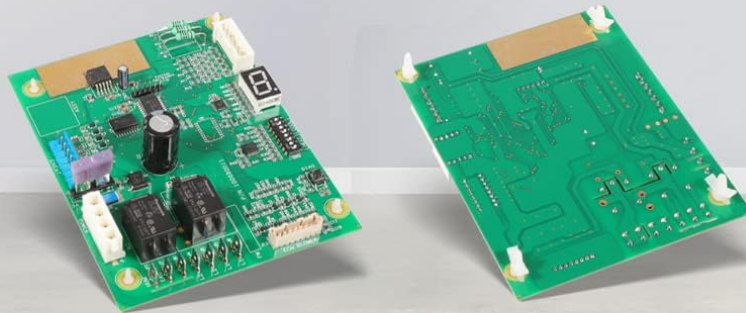
Detailed Installation Process

For a more detailed visual guide, refer to the following steps:



Hassle-Free Installation

Work well with the original wiring as with the updated wiring.



STEP 1
Locate your furnace.



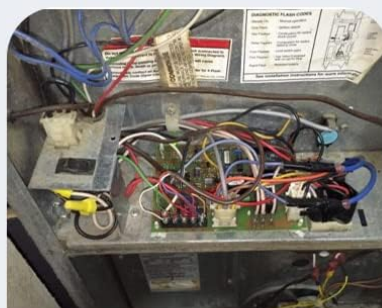
STEP 2
Shut off power to furnace.



STEP 3
Location the control box.



STEP 4
Remove the box cover.



STEP 5
Disconnect to take off the board.



STEP 6
Plugged into new circuit board.

Image: A step-by-step visual guide for replacing the furnace control board, from locating the furnace to connecting the new board.

1. **Step 1: Locate your furnace.** Identify the furnace unit in your home.
2. **Step 2: Shut off power to furnace.** Crucially, turn off the main power supply to the furnace at your home's electrical panel to prevent electrical shock.
3. **Step 3: Location the control box.** Open the furnace access panel and locate the control box where the existing circuit board is housed.
4. **Step 4: Remove the box cover.** Carefully remove the cover of the control box to expose the circuit board.
5. **Step 5: Disconnect to take off the board.** Take a photo of the existing wiring for reference. Disconnect all wires and mounting screws holding the old board in place.
6. **Step 6: Plugged into new circuit board.** Install the new 1006801R control board, ensuring it is securely mounted. Reconnect all wires according to your reference photo or the furnace's wiring diagram.

After installation, close all covers and restore power to the furnace. Test the system to ensure proper operation.

OPERATING INSTRUCTIONS

Once the 1006801R Control Board is correctly installed, the furnace will operate according to its standard programming and thermostat settings. This control board is designed to manage the furnace's functions, including blower operation and temperature regulation, based on the signals it receives.

- **Normal Operation:** The board will automatically manage the furnace's heating cycles based on your thermostat's demands.
- **Blower Efficiency:** The advanced programming capabilities of this board contribute to improved furnace blower running efficiency.
- **Temperature Control:** It ensures efficient temperature changes and maintains desired indoor climate.

For specific operational details, always refer to the user manual provided with your furnace or air handler unit, as the control board integrates with the existing system.

MAINTENANCE

The sixcow 1006801R Control Board is a sealed electronic component and generally requires no user maintenance. However, to ensure its longevity and the overall health of your furnace system, consider the following:

- **Regular Furnace Maintenance:** Ensure your furnace undergoes regular professional maintenance as recommended by the furnace manufacturer. This includes cleaning filters, checking electrical connections, and inspecting other components.
- **Keep Area Clean:** Keep the area around the furnace and control board clean and free from dust and debris, which can accumulate and potentially affect electronic components over time.
- **Moisture Protection:** While the board offers excellent moisture resistance, avoid exposing the furnace area to excessive humidity or direct water contact.

If you suspect any issues with the control board, it is recommended to consult a qualified HVAC technician.

TROUBLESHOOTING

If your furnace is not operating as expected after installing the 1006801R Control Board, consider the following general troubleshooting steps. Always prioritize safety and consult a professional if you are unsure.

- **No Power:**
 - Check if the circuit breaker for the furnace is tripped.
 - Ensure all electrical connections to the control board are secure.

- **Furnace Not Starting:**

- Verify that the thermostat is set to the correct mode (Heat) and temperature.
- Check for any error codes displayed on the furnace or the control board (if applicable).
- Ensure all wiring connections are correct and tight.

- **Intermittent Operation:**

- Inspect for loose connections or signs of corrosion on terminals.
- Ensure proper airflow and that filters are clean.

For complex issues or if the problem persists, it is highly recommended to contact a certified HVAC technician. Do not attempt repairs beyond your skill level, as it can be dangerous and may void warranties.

PRODUCT SPECIFICATIONS



PRODUCT SIZE

Direct Replacement. Meeting or exceeding OEM Standard.

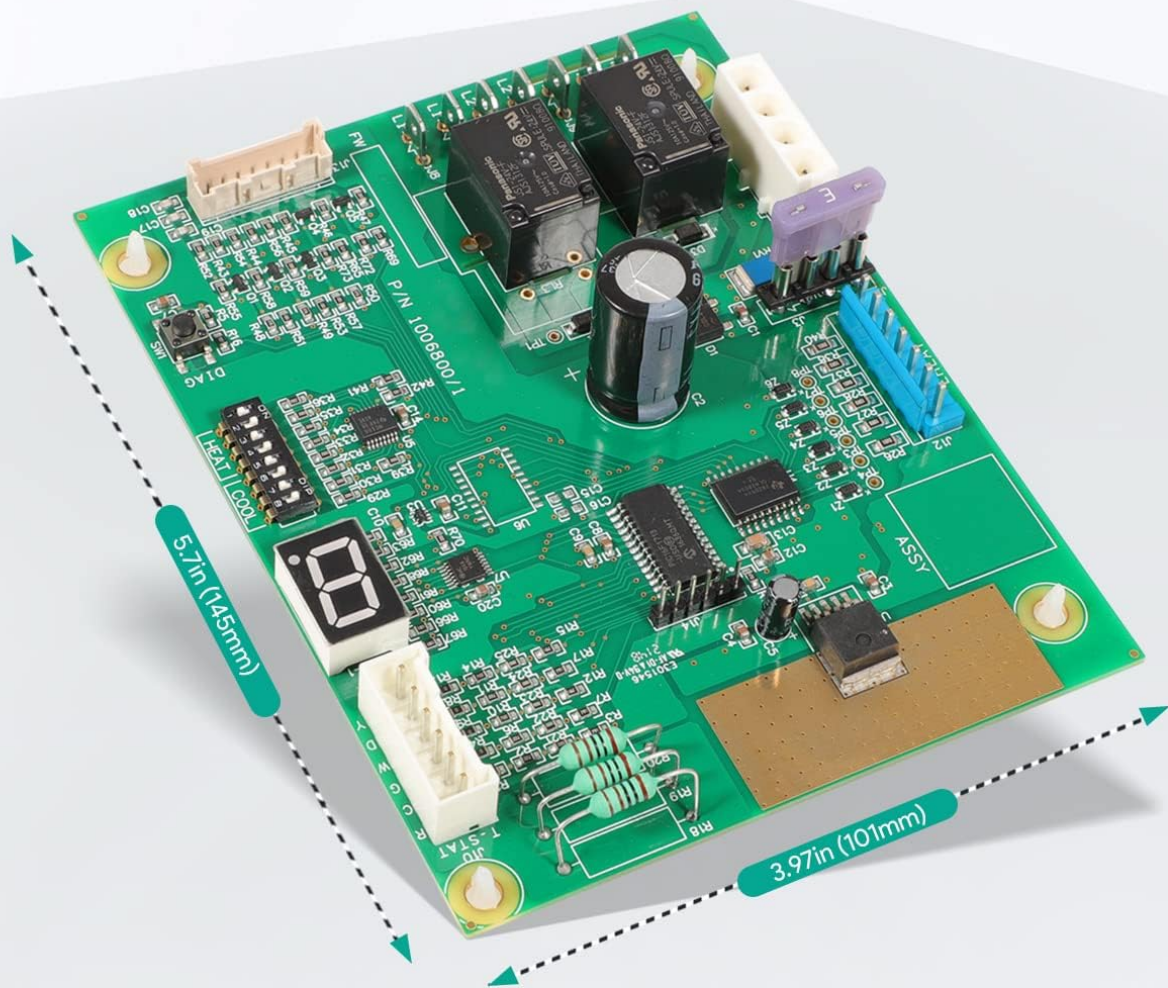


Image: Dimensions of the 1006801R Control Board, showing its compact size for direct replacement.

Model Number	1006801R
Part Number	1006801RKZB-US-1
Manufacturer	sixcow
Material	PCB (Printed Circuit Board)
Item Weight	6.4 ounces
Product Dimensions	6.6 x 6.6 x 1.57 inches (16.76 x 16.76 x 3.99 cm)
Installation Method	Direct Replacement
Included Components	Qty-1 1006801 Control Board
Usage	Fits furnace & air handler models E7 and FSHE.

WARRANTY AND SUPPORT

The sixcow 1006801R Control Board comes with a comprehensive warranty to ensure your satisfaction and peace of mind.

- **30-Day Money-Back Guarantee:** If you are not completely satisfied with your purchase, you may return it within 30 days for a full refund.
- **12-Month Warranty:** The product is covered by a 12-month warranty for any quality-related issues.

For warranty claims, technical support, or any inquiries, please contact sixcow customer service through the retailer's platform where the product was purchased. Please have your purchase details and model number ready for faster assistance.