



[Manuals.plus](#) /

> [LAWOHO](#) /

> LAWOHO 377LM Wireless Keypad Instruction Manual

LAWOHO 377LM

LAWOHO 377LM Wireless Keypad Instruction Manual

Model: 377LM Wireless Keypad

1. PRODUCT OVERVIEW

The LAWOHO 377LM Wireless Keypad provides keyless entry for compatible garage door openers. It features a backlit keypad for visibility in low light conditions and a durable, weather-resistant housing.

Key Features:

- **Wireless Keypad:** Offers convenient keyless access to your garage.
- **Backlit Keypad:** Red lights illuminate the buttons for clear visibility at night.
- **Durable Design:** Features a tough and waterproof housing for outdoor use.
- **Security+ Technology:** Utilizes 315 MHz rolling code technology for enhanced security.
- **Easy Installation:** Designed for straightforward setup and programming.



Image 1.1: The LAWOHO 377LM Wireless Keypad with its protective cover open, displaying the numeric buttons.

2. COMPATIBILITY

This 377LM Wireless Keypad is an aftermarket replacement designed for garage door openers that operate on a **315 MHz frequency** and have a **purple "learn" button** on the motor unit. It is crucial to verify your garage door opener's learn button color and frequency before attempting to program the keypad.

Compatible Models Include:

- **LiftMaster:** 355LM, 365LM, 370LM, 371LM, 371LMC, 372LM, 372LMC, 373LM, 373LMC, 373P, 373W, 374LM, 374LMC, 376LM, 377LM, 377LMC, 378LM, 398LM, 41A6127-1
- **Chamberlain:** 41A6318, 940D, 940CD, 950D, 950CD, 953D, 953CD, 956D, 956CD
- **Sears Craftsman:** 139.18191, 139.18192, 139.53752, 139.53753, 139.53754
- **AccessMaster:** 371AC, 373AC, 377LG
- **Do It:** 940DID, 953DID

PURPLE LEARN BUTTON Security+ 315MHZ

Only compatible with Purple Learn Button on the motor unit.



315 MHz Frequency
Purple learn button only

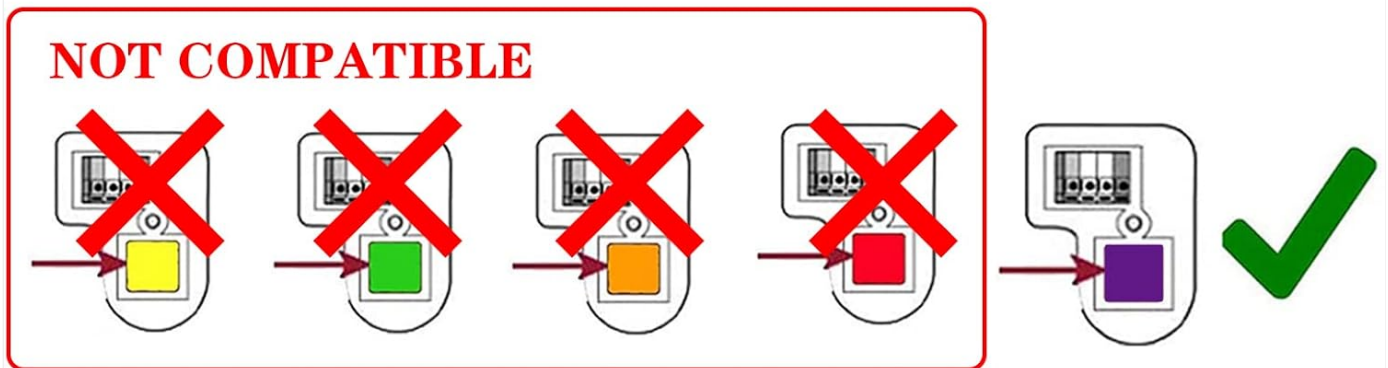


Image 2.1: Illustration showing a garage door opener motor unit with the purple learn button, indicating compatibility. Other learn button colors are shown as incompatible.

3. SETUP AND PROGRAMMING

Follow these steps to program your LAWOHO 377LM Wireless Keypad to your compatible garage door opener.

- Step 1:** Press and hold the * and the # buttons simultaneously on the keypad until you hear a beep sound. The keypad lights will illuminate.
- Step 2:** Enter a 4-digit Personal Identification Number (PIN) of your choice. Then, press the # button.
- Step 3:** Press and release the **ENTER** button two times. This action prepares the keypad for programming with a purple learn button opener.
- Step 4:** To exit programming mode, press the **0** button.
- Step 5:** On your garage door opener motor unit, locate and press the **purple learn button**. The LED light on the motor unit will light up. You have approximately 30 seconds to complete the next step.

6. **Step 6:** Within 30 seconds of pressing the learn button, enter your 4-digit PIN on the keypad, then press and release the **ENTER** button. Continue pressing and releasing the **ENTER** button until the garage door opener indicator light flashes or you hear two clicks.
7. **Step 7:** To test, press your 4-digit PIN, then press the **ENTER** button. The garage door opener should activate.

Your browser does not support the video tag.

Video 3.1: An instructional video demonstrating the step-by-step programming process for the LAWOHO 377LM Wireless Keypad.

4. OPERATING INSTRUCTIONS

Once programmed, operating the LAWOHO 377LM Wireless Keypad is straightforward:

- To open or close your garage door, simply enter your 4-digit PIN and then press the **ENTER** button.
- The keypad features a backlight that activates when buttons are pressed, making it easy to use at night.
- The keypad will emit audio beeps when buttons are pressed, confirming input.



Image 4.1: The LAWOHO 377LM Wireless Keypad with its red backlight illuminated, demonstrating its usability in dark conditions.

5. MAINTENANCE

Battery Replacement:

The keypad is powered by one 9V alkaline battery (included). When the keypad's performance degrades or it stops responding, it may be time to replace the battery.

1. **Step 1:** Slide the battery cover located at the bottom of the keypad downwards to open the battery compartment.
2. **Step 2:** Carefully disconnect the old 9V battery from its terminals and remove it.
3. **Step 3:** Connect the new 9V alkaline battery to the terminals, ensuring correct polarity.
4. **Step 4:** Place the new battery into the compartment and slide the cover back into place until it clicks securely.

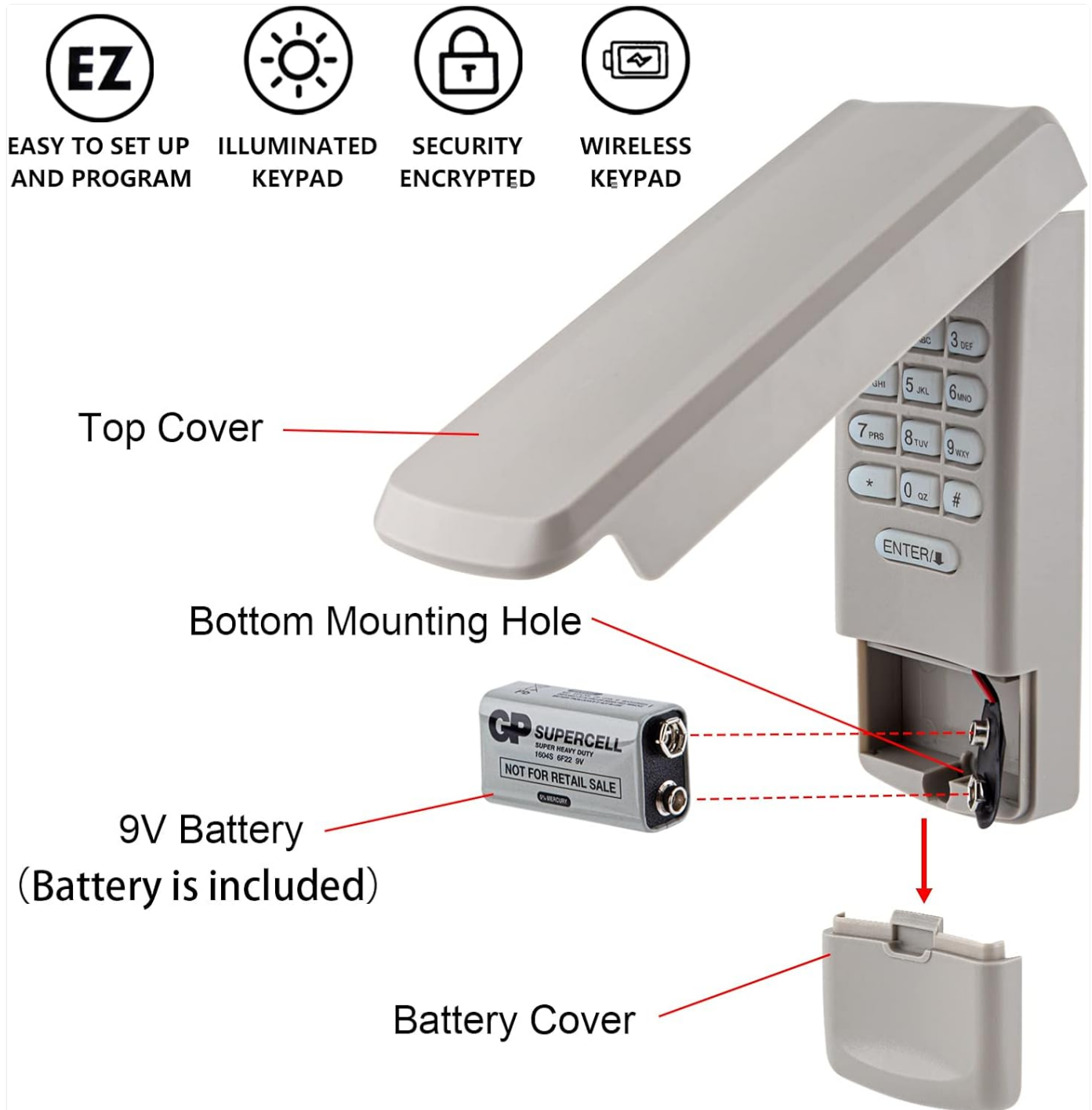


Image 5.1: Diagram illustrating the location of the battery compartment, the 9V battery, and the bottom mounting hole on the LAWOHO 377LM Wireless Keypad.

6. TROUBLESHOOTING

- **Keypad Not Responding:** Ensure the battery is correctly installed and has sufficient charge. Replace the 9V battery if necessary.
- **Garage Door Not Activating:**
 - Verify that your garage door opener has a **purple learn button** and operates on a **315 MHz frequency**. This keypad is not compatible with other learn button colors (e.g., yellow, green, orange, red).
 - Re-attempt the programming steps carefully, ensuring all steps are followed in sequence.
 - Ensure you are within range of the garage door opener when attempting to activate it. The maximum range is approximately 150 feet.
- **No "One-Touch Close" Feature:** This keypad requires you to enter your PIN followed by the ENTER button to close the garage door, unlike some original units that may offer a single-button close. This is a design feature for enhanced security.

7. SPECIFICATIONS

Brand	LAWOHO
Model Name	377LM Wireless Garage Door Keypad
Model Number	377LM Wireless Keypad
Special Feature	Backlit
Color	377LM Keypad (Grey/Tan)
Compatible Devices	LiftMaster, Chamberlain, Sears Craftsman, AccessMaster, Do It, Raynor garage door openers with purple learn button (315 MHz)
Connectivity Technology	Radio Frequency (315 MHz Security+)
Button Quantity	5 (Numeric 0-9, *, #, ENTER)
Maximum Range	150 Feet
Battery Type	1 x 9V Alkaline battery (included)

8. WARRANTY AND SUPPORT

The LAWOHO 377LM Wireless Keypad comes with a **1 Year Manufacturer Warranty**.

For any issues or further assistance, please contact LAWOHO customer service. Professional customer service is available to address any problems you may encounter with the 377LM Wireless Keypad.

