

IS 595e7094-a339-453a-ba7b-a68b5d7a19b1

ICSTATION DIY Radio Kit User Manual

Model: 595e7094-a339-453a-ba7b-a68b5d7a19b1 | Brand: IS

INTRODUCTION

This user manual provides detailed instructions for assembling, operating, and maintaining your ICSTATION DIY Radio Kit. This kit is designed for easy assembly without soldering, making it an ideal project for beginners in electronics. It features FM, MW, and SW frequency bands, a time display, and rechargeable capabilities.

WHAT'S INCLUDED

Your ICSTATION DIY Radio Kit includes all necessary components for assembly:

- Pre-soldered FM module with display
- Battery (1 Lithium Polymer, 1000mAh)
- Telescopic antenna
- Speaker
- Buttons
- Clear acrylic case components
- Small screwdriver
- Other assembly hardware (screws, standoffs, wires)

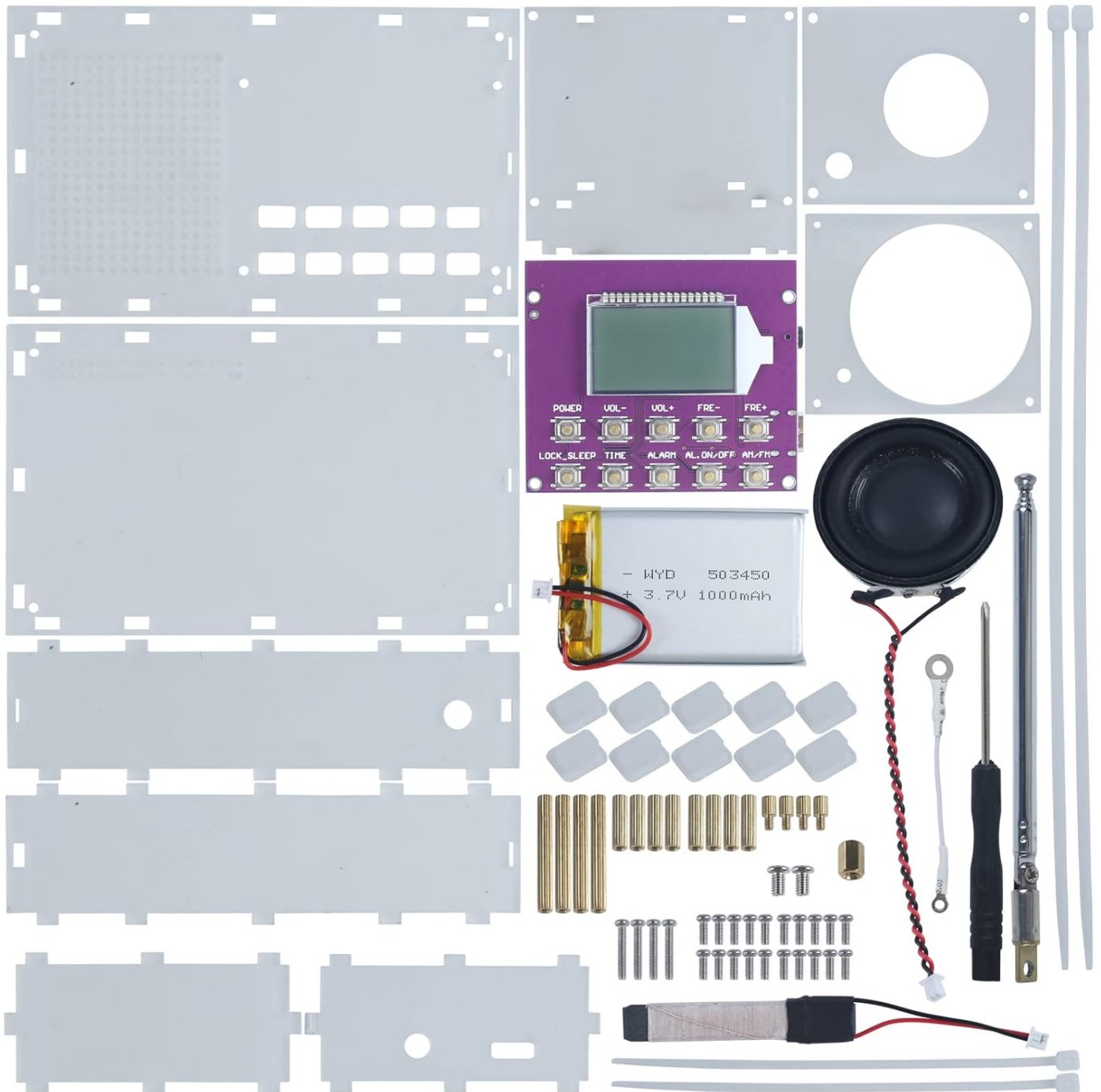


Image: All components of the ICSTATION DIY Radio Kit, including the pre-soldered module, battery, speaker, antenna, and acrylic case parts.

ASSEMBLY INSTRUCTIONS

The ICSTATION radio kit is designed for easy, solder-free assembly. The FM module comes pre-soldered. Follow these steps to assemble your radio:

1. **Prepare Components:** Unpack all components and identify them.
2. **Assemble Main Module:** Secure the pre-soldered FM module within the acrylic case using the provided screws and standoffs.
3. **Connect Battery:** Connect the battery to the designated port on the FM module. Ensure correct polarity.
4. **Install Speaker:** Place the speaker into its designated slot in the case and secure it.
5. **Attach Antenna:** Mount the telescopic antenna to the case.
6. **Install Buttons:** Insert the control buttons into their respective slots on the front panel of the case.
7. **Close Case:** Carefully assemble the acrylic case panels around the internal components, securing them with the

remaining screws.

EASY TO BUILD

FM modules have been precision soldered to make it easier for you to build it.

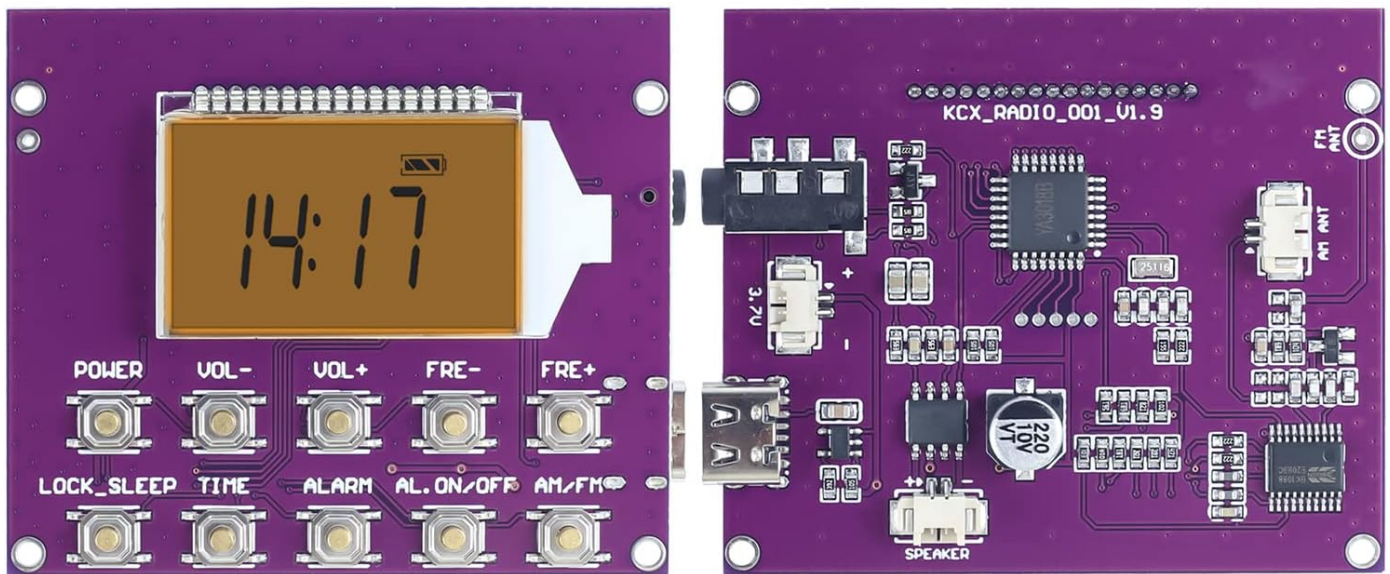


Image: The pre-soldered FM module, ready for integration into the radio kit.



RECHARGEABLE FM RADIO KIT

USB cable and charger are not included



Image: The fully assembled ICSTATION DIY Radio Kit, showcasing its transparent casing and internal electronics.

OPERATING INSTRUCTIONS

Power On/Off and Clock/Radio Switch

Press the "POWER" button to turn the radio on or off. To switch between clock display and radio mode, press the "TIME" button.

Your browser does not support the video tag.

Video: Demonstrates how to switch between clock and radio modes on the device.

Adjusting Frequency and Volume

- **Frequency Adjustment:** In radio mode, use the "FRE+" and "FRE-" buttons to adjust the frequency.
- **Volume Adjustment:** Use the "VOL+" and "VOL-" buttons to control the volume level.



3 BANDS TO CHOOSE STATION

1

FM: Frequency Modulation Broadcast

2

SW: Shortwave

3

MW: Medium Wave



FM: 87-108MHz



MW: 522-1620KHz



SW: 4.75-21.85MHz



Image: The radio's display showing the current FM frequency and the control buttons.

FM/MW/SW Frequency Bands

Press the "AM/FM" button to cycle through the available frequency bands:

- **FM:** 87-108MHz
- **MW (Medium Wave):** 522-1620KHz
- **SW (Shortwave):** 4.75-21.85MHz

For optimal reception, adjust the angle of the telescopic antenna for FM and SW bands. For MW, the radio relies on its internal magnetic rod coil, so rotating the device may improve signal.



SEARCH AND STORE PROGRAMS

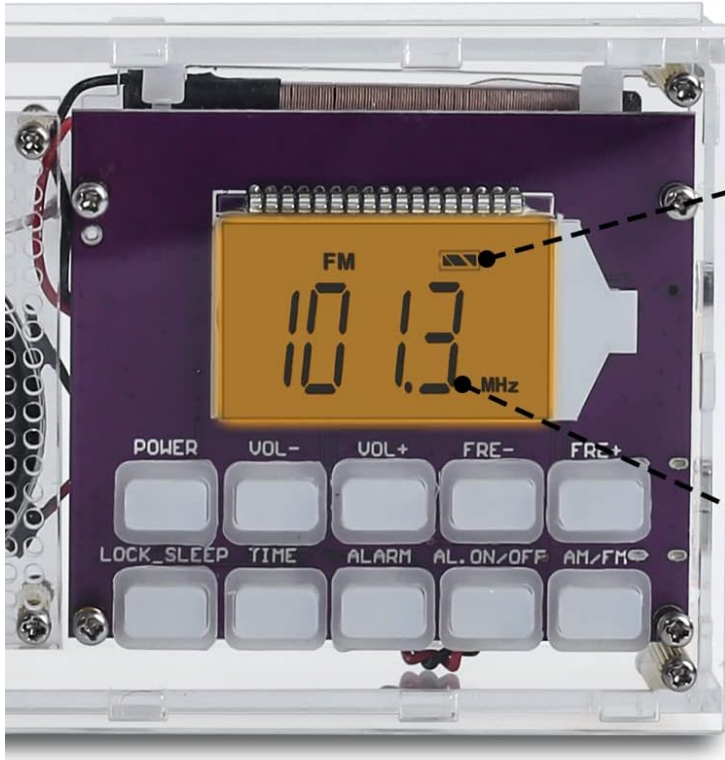
When it finds a program, it automatically saves it for you to find quickly next time, and when it saves multiple stations, you can follow the steps to quickly switch to your favorite programs.



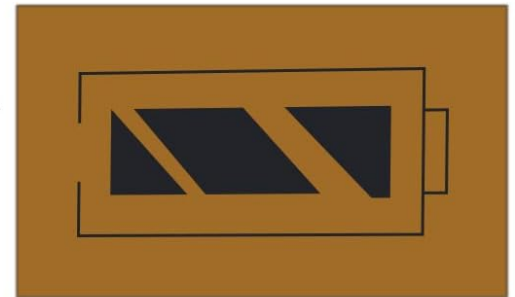
Image: Visual representation of the radio's multi-band capabilities (FM, MW, SW).

Search and Store Programs

In radio state, you can automatically search and store stations. Long press the "ALARM" button for the M- function (previous stored station) and long press "ALARM_ON/OFF" for the M+ function (next stored station). You can quickly change programs by pressing the "M+" or "M-" buttons.



Time Function



Battery Power



FM Radio

Image: The radio actively searching for and storing programs.

Sleep Timer Function

The radio features a sleep timer. Press the "SLEEP TIME" button to cycle through various shutdown times (e.g., 90min, 60min, 45min, 30min, 15min, 10min, OFF). The radio will automatically turn off after the selected duration.

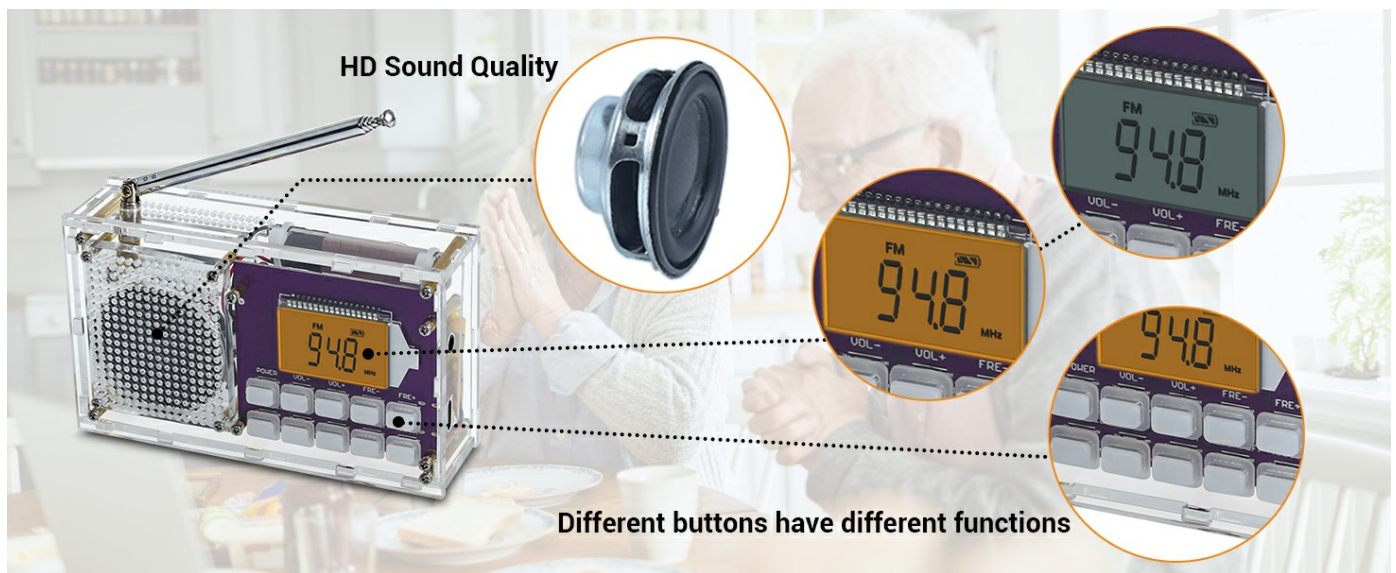


Image: The radio's sleep timer function with various time settings.

Setting the Time

To set the correct time:

1. Long press the "TIME" button until the display changes.
2. Press "FRE+" to switch between 12-hour and 24-hour time systems.
3. Short press "TIME" to set the correct hour using "FRE+" or "FRE-".
4. Short press "TIME" again to set the correct minute using "FRE+" or "FRE-".
5. Press "TIME" one more time to save the settings.



CLEAR SOUND QUALITY



5W speaker,
stereo and clear sound

Equipped with a 3.5mm
headphone jack
(headphone is not
included)

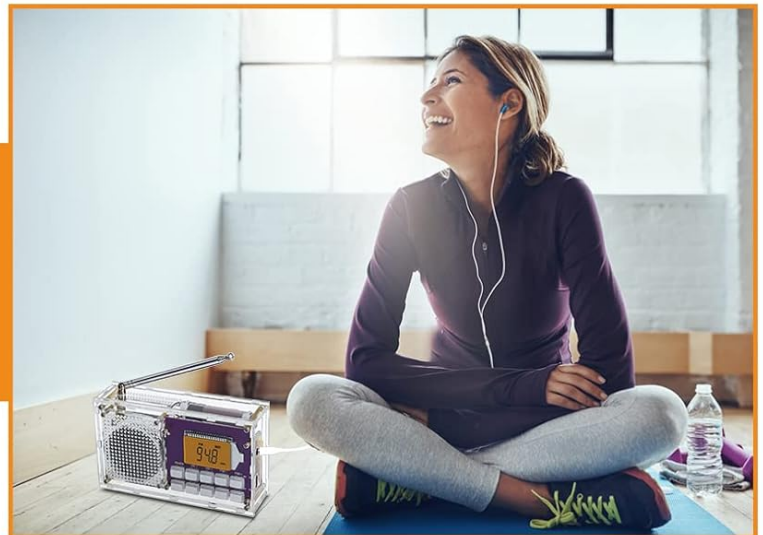


Image: The radio's display showing time, battery, and FM radio information.

MAINTENANCE

Charging the Battery

The radio is equipped with a rechargeable battery. The battery icon on the display indicates the current power level. When the icon shows 0, the battery is low and requires charging.

- Connect a 5V mobile phone charger (Type-C interface) to the radio's charging port.
- The battery icon will flash during charging.
- Once fully charged, the battery icon will be full and stop flashing.
- **Note:** A USB cable and charger are not included with the kit.



Image: The radio connected to a Type-C charger, illustrating the charging process.

Cleaning

To clean the radio, gently wipe the exterior with a soft, dry cloth. Avoid using abrasive cleaners or solvents.

TROUBLESHOOTING

- **Radio not turning on:** Ensure the battery is properly connected and charged.
- **Poor reception:** Extend the telescopic antenna fully. For FM/SW, adjust the antenna's angle. For MW, try rotating the radio itself. Ensure you are not in an area with significant interference.
- **Display issues:** Check battery level. If the display is blank or flickering, try recharging the battery.
- **Buttons unresponsive:** Ensure all connections are secure and the buttons are correctly seated in the case.
- **No sound:** Check volume level. Ensure the speaker is properly connected.

SPECIFICATIONS

Product Dimensions	4.25"L x 1.18"W x 2.55"H (108mm x 30mm x 65mm)
Item Weight	7.8 ounces
Battery	1 Lithium Polymer battery (included), 3.7V 1000mAh
Tuner Technology	FM, MW, SW
FM Frequency Range	87-108MHz
MW Frequency Range	522-1620KHz
SW Frequency Range	4.75-21.85MHz
Connectivity	USB (Type-C for charging)
Special Features	Rechargeable, Time Display, Power Off Memory Function, Sleep Timer



Image: Product dimensions of the assembled radio.

WARRANTY AND SUPPORT

For any product inquiries, technical support, or warranty information, please contact ICSTATION customer service. You may also refer to the official [User Manual \(PDF\)](#) for additional details.