

Thermaltake CL-F143-PL12SW-A

Thermaltake SWAFAN EX 12 RGB PC Cooling Fan (3-Pack) - Instruction Manual

Brand: Thermaltake | **Model:** CL-F143-PL12SW-A

INTRODUCTION

The Thermaltake SWAFAN EX 12 RGB PC Cooling Fan is designed to provide efficient cooling and vibrant RGB lighting for your desktop PC. This 3-pack features an innovative magnetic connection system for streamlined installation and cable management, along with swappable fan blades to optimize airflow direction. This manual will guide you through the setup, operation, and maintenance of your SWAFAN EX 12 RGB fans.

WHAT'S IN THE BOX

The SWAFAN EX 12 RGB 3-Pack includes the following components:

- 3 x SWAFAN EX 12 RGB Fan Frames
- 3 x Standard Fan Blades (Pre-installed)
- 3 x Reverse Fan Blades
- 1 x Fan Controller
- 3 x Magnetic Connection Cables (Mag-cables)
- Mounting Screws and Accessories



Image: Overview of the Thermaltake SWAFAN EX 12 RGB PC Cooling Fan 3-Pack.

SETUP AND INSTALLATION

Follow these steps to install your Thermaltake SWAFAN EX 12 RGB fans:

1. Magnetic Fan Connection

The SWAFAN EX fans feature a magnetic force design for easy connection. Align the fans side-by-side, and they will snap together securely, forming a daisy-chain. This reduces the number of cables needed for multiple fans.

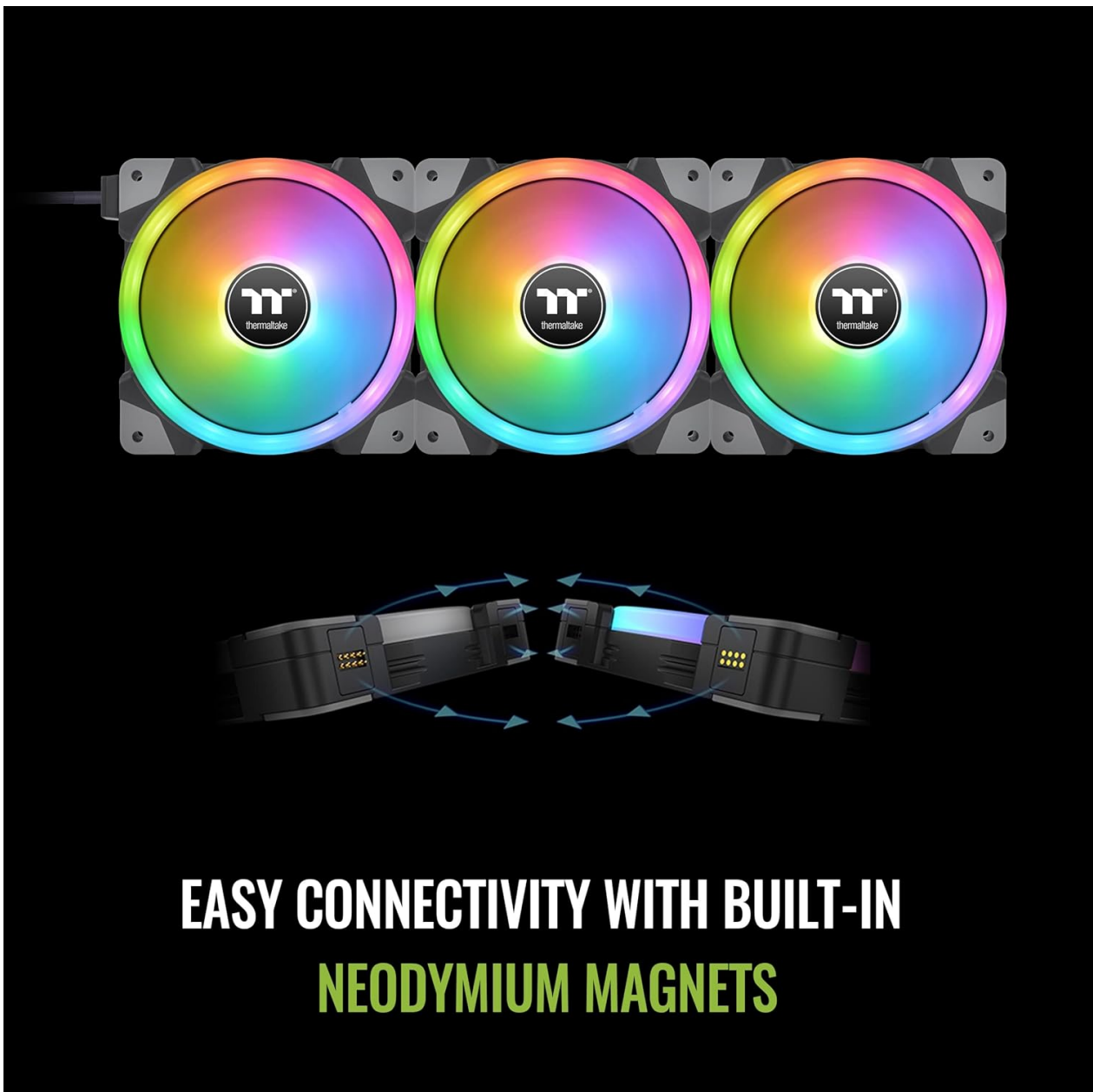
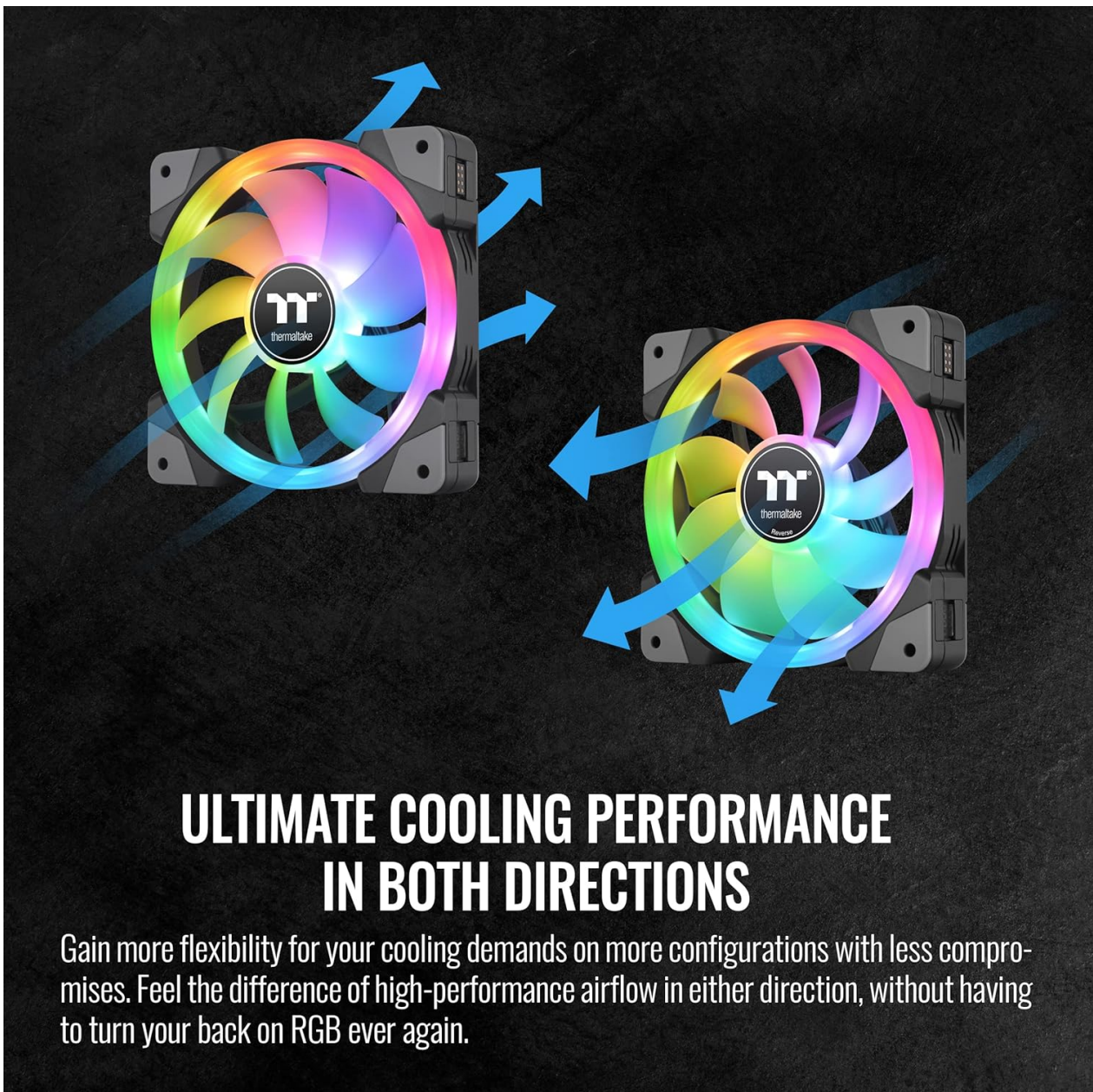


Image: Demonstrates the magnetic connection between multiple SWAFAN EX fans.

2. Swapping Fan Blades

The SWAFAN EX fans come with swappable fan blades, allowing you to easily change the airflow direction (push or pull) without reorienting the entire fan. To swap blades:

1. Gently twist and pull the pre-installed standard fan blade from the fan frame.
2. Align the desired reverse fan blade with the motor hub and push it firmly until it clicks into place.



ULTIMATE COOLING PERFORMANCE IN BOTH DIRECTIONS

Gain more flexibility for your cooling demands on more configurations with less compromises. Feel the difference of high-performance airflow in either direction, without having to turn your back on RGB ever again.

Image: Illustration of airflow direction for standard (push) and reverse (pull) fan blades.

3. Connecting the Controller and Cables

Connect the magnetic connection cable to the last fan in your daisy chain. Ensure the cable is securely attached. The controller requires a USB 2.0 header (9-pin) on your motherboard for data communication and a SATA power connector from your power supply for power.

- Connect the magnetic cable from the fan chain to the controller.
- Connect the USB 2.0 cable from the controller to an available USB 2.0 header on your motherboard.
- Connect the SATA power cable from your power supply to the controller.



SWAFAN EX12 RGB PC COOLING FAN

Snap into a better way to cool your RGB with the SWAFAN EX 12 RGB Series. With built-in Neodymium magnets on each fan, it's a snap to build and even better to manage with reduced cables in your case. Swap to reversible fan blades included to support better push or pull configurations and unlock the full potential of both cooling performance and RGB lighting.

Image: A single SWAFAN EX 12 RGB fan, highlighting its design and connectivity.

4. Mounting the Fans

Mount the assembled fan units into your PC case or onto your radiator using the provided screws. Ensure proper alignment and secure fastening.

Your browser does not support the video tag.

Video: Official Thermaltake guide on installing SWAFAN EX fans, demonstrating magnetic connections and cable routing.

OPERATING INSTRUCTIONS

The SWAFAN EX 12 RGB fans offer versatile control options for both fan speed and RGB lighting.

1. TT RGB PLUS 2.0 Software

Download and install the FREE TT RGB PLUS 2.0 Software from the Thermaltake website. This software allows for comprehensive control over fan speeds, RGB lighting effects, and customization of individual LED profiles. The software supports dual-zone RGB control, with 14 LEDs on the outer ring and 6 LEDs on the inner ring.

2. Fan Controller (Included)

The included controller provides basic control over RGB lighting effects. Refer to the software for advanced customization.

Your browser does not support the video tag.

Video: Official Thermaltake overview of the Swafan EX RGB PC Cooling Fan, showcasing its features and RGB lighting.

MAINTENANCE

Regular cleaning of your SWAFAN EX fans is recommended to maintain optimal performance and aesthetics.

Cleaning Fan Blades

The swappable fan blade design makes cleaning easy. You can remove the fan blades and rinse them with water. Ensure they are thoroughly dried before reattaching them to the fan frame. Apply bearing lubricant if needed (not included).



CLEANING FANS ARE NOW EASY AND FUN!

If you want, you can even rinse the fan blades with water, just make sure you dry them thoroughly and apply bearing lubricant that is include in the package if needed.

Image: A hand rinsing a SWAFAN EX fan blade under running water, demonstrating ease of cleaning.

TROUBLESHOOTING

If you encounter issues with your SWAFAN EX 12 RGB fans, consider the following:

- **Fans Not Spinning or Lighting Up:** Check all magnetic connections between fans and ensure the main magnetic cable is firmly connected to the controller. Verify that the controller has proper SATA power and USB 2.0 connections to the motherboard.
- **RGB Malfunction:** Ensure the TT RGB PLUS 2.0 software is installed and updated. Check the 5V ARGB connection from the controller to the motherboard. Re-seat all connections if necessary.
- **Fan Speed Issues:** Confirm that the fan cable is correctly connected to the controller and the controller to the motherboard's USB 2.0 header. Adjust fan curves within the TT RGB PLUS 2.0 software.
- **Loose Connections:** If fans feel loose or connections are intermittent, ensure the magnetic connections are fully engaged and the mounting screws are tightened appropriately.

SPECIFICATIONS


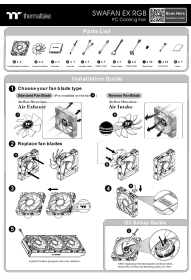
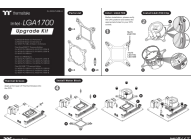
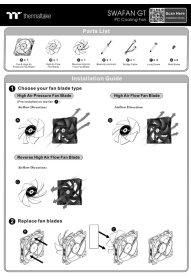
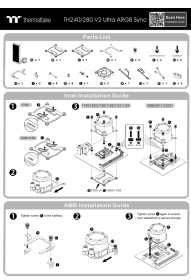
Feature	Specification
P/N	CL-F143-PL12SW-A
Fan Dimension	120 x 120 x 25 mm
Interface	USB 2.0 connectors (9 Pin)
System Compatibility	Windows 10 / 11
Fan Started Voltage	9.0 V
Fan Rated Voltage	12 V & 5V
Rated Current (one fan)	12 V - 0.23 A, 5 V - 0.72 A
Power Input (one fan)	12 V - 2.76 W, 5 V - 3.6 W
Fan Speed	500 ~ 2000 R.P.M
Max. Air Pressure (Standard Fan Blade)	2.39 mm-H ₂ O
Max. Air Pressure (Reverse Fan Blade)	2.02 mm-H ₂ O
Max Air Flow (Standard Fan Blade)	57.11 CFM
Max Air Flow (Reverse Fan Blade)	56.26 CFM
Noise Level (Standard Fan Blade)	30.6 dB-A
Noise Level (Reverse Fan Blade)	32.5 dB-A
Bearing Type	Hydraulic Bearing
Life Expectation	40,000 hrs, 25°C

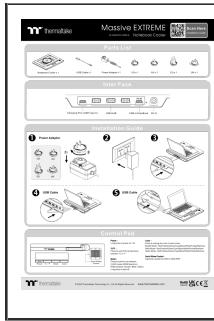
WARRANTY AND SUPPORT

Thermaltake products are designed for reliability and performance. For warranty information and technical support, please visit the official Thermaltake website or contact their customer service. Keep your proof of purchase for warranty claims.

For further assistance, please refer to the [Thermaltake Official Website](#).

Related Documents - CL-F143-PL12SW-A

	<p>Thermaltake SWAFAN EX RGB PC Cooling Fan Software Guide</p> <p>A guide to the TT RGB Plus software interface for controlling Thermaltake SWAFAN EX RGB PC Cooling Fans, covering connection, fan speed, and lighting effects.</p>
	<p>Thermaltake SWAFAN EX RGB PC Cooling Fan Installation Guide</p> <p>This guide provides step-by-step instructions for installing and setting up the Thermaltake SWAFAN EX RGB PC Cooling Fan, including fan blade selection, blade replacement, oil setup, and controller installation.</p>
	<p>Thermaltake LGA1700 Upgrade Kit Installation Guide</p> <p>Step-by-step instructions for installing the Thermaltake LGA1700 Upgrade Kit, compatible with Water 3.0 and Floe series CPU coolers. Includes parts list and compatibility information.</p>
	<p>Thermaltake SWAFAN GT PC Cooling Fan Installation Guide</p> <p>Detailed installation guide for the Thermaltake SWAFAN GT PC Cooling Fan, covering parts identification, fan blade selection, blade replacement, multi-fan connection, and lubricant setup.</p>
	<p>Thermaltake TH240/280 V2 Ultra ARGB Sync Installation Guide</p> <p>A comprehensive installation guide for the Thermaltake TH240/280 V2 Ultra ARGB Sync All-In-One Liquid Cooler, detailing parts, Intel and AMD CPU cooler installation, and RGB synchronization setup.</p>



[Thermaltake Massive EXTREME Notebook Cooler Installation Guide](#)

Comprehensive guide for setting up and using the Thermaltake Massive EXTREME Notebook Cooler (CL-N023-PL12SW-A), covering parts, interface, installation steps, and control pad features.