

Yaheetech YA-00120480

Instruction Manual for Yaheetech Metal Double Bed Frame

Model: YA-00120480

PRODUCT OVERVIEW

The Yaheetech Metal Double Bed Frame (Model YA-00120480) is designed to provide a sturdy and stylish foundation for your mattress. Featuring a minimalist design with curved lines and a thick tubular frame, it complements various interior styles from modern to rustic. This bed frame offers practical features such as under-bed storage space and a high headboard for comfortable lounging.



Image: Fully assembled Yaheetech Metal Double Bed Frame, white, in a bedroom with nightstands and decor.

IMPORTANT SAFETY INFORMATION

Please read and understand all safety warnings before assembly and use. Failure to follow these instructions may result in injury or damage to the product.

- **Maximum Weight Capacity:** The bed frame is designed to support a maximum weight of **272 kg (approximately 600 lbs)**, including the mattress and occupants. Do not exceed this limit.
- **Small Parts Warning:** This product contains small parts during assembly. Keep all components and hardware out of reach of children and pets to prevent choking hazards.
- **Assembly Stability:** Ensure all connections are securely fastened according to the assembly instructions to guarantee proper stability and prevent collapse risks. Regularly check and tighten all bolts and screws.
- **Even Weight Distribution:** Distribute weight evenly across the bed frame. Avoid concentrating heavy loads on a single point.
- **Floor Protection:** The bed frame is equipped with protective footpads. Ensure these are properly installed to

prevent scratches or damage to your flooring.

FEATURES

The Yaheetech Metal Double Bed Frame incorporates several design elements for comfort, safety, and practicality:

- **Minimalist and Elegant Design:** Features clean lines and a thick tubular metal frame, offering a subtle balance of modern and traditional aesthetics. The white powder-coated finish provides a sleek look.



Simple Fashion Style

Image: The full metal bed frame structure, highlighting its simple and fashionable design.

- **High Headboard:** The elevated headboard allows for comfortable seating in bed, ideal for reading or watching television.



Bottom Storage Space



Protective Footpads



Metal Slat



Elegant Headboard

Image: A composite image showing details of the bed frame, including the elegant headboard, bottom storage space, protective footpads, and metal slats.

- **Secure Design:** Carefully designed with rounded corners to prevent accidental injuries. Raised bed ends help keep bedding securely in place during sleep.
- **Ample Under-Bed Storage:** With 32 cm (approximately 12.6 inches) of clearance, the space beneath the bed provides convenient storage for boxes, bins, or other items, helping to keep your room tidy.



Image: A close-up showing the height of the under-bed clearance, measured at 32.5 cm.

- **Protective Footpads:** Each leg is fitted with protective footpads to minimize noise when moving the bed and to prevent scratches on your floor.
- **Integrated Metal Slats:** The bed frame features built-in metal slats that provide robust support for your mattress and prevent it from sliding.



Image: A detailed view of the bed frame's built-in slats, illustrating how they secure the mattress in place.

SPECIFICATIONS

Attribute	Detail
Brand	Yaheetech
Model Number	YA-00120480
Color	White
Overall Dimensions (L x W x H)	207.5 cm x 145.5 cm x 83.5 cm (81.7" x 57.3" x 32.9")
Applicable Mattress Size	140 cm x 200 cm (Double)
Under-Bed Clearance	32 cm (12.6")
Maximum Weight Capacity	272 kg (600 lbs)

Attribute	Detail
Item Weight	19.7 kg (43.4 lbs)
Material	Metal with Powder Coating Finish
Special Features	Squeak-resistant, Fade-resistant

Max. weight capacity:272kg
Applicable Mattress Size:140 x 200 cm

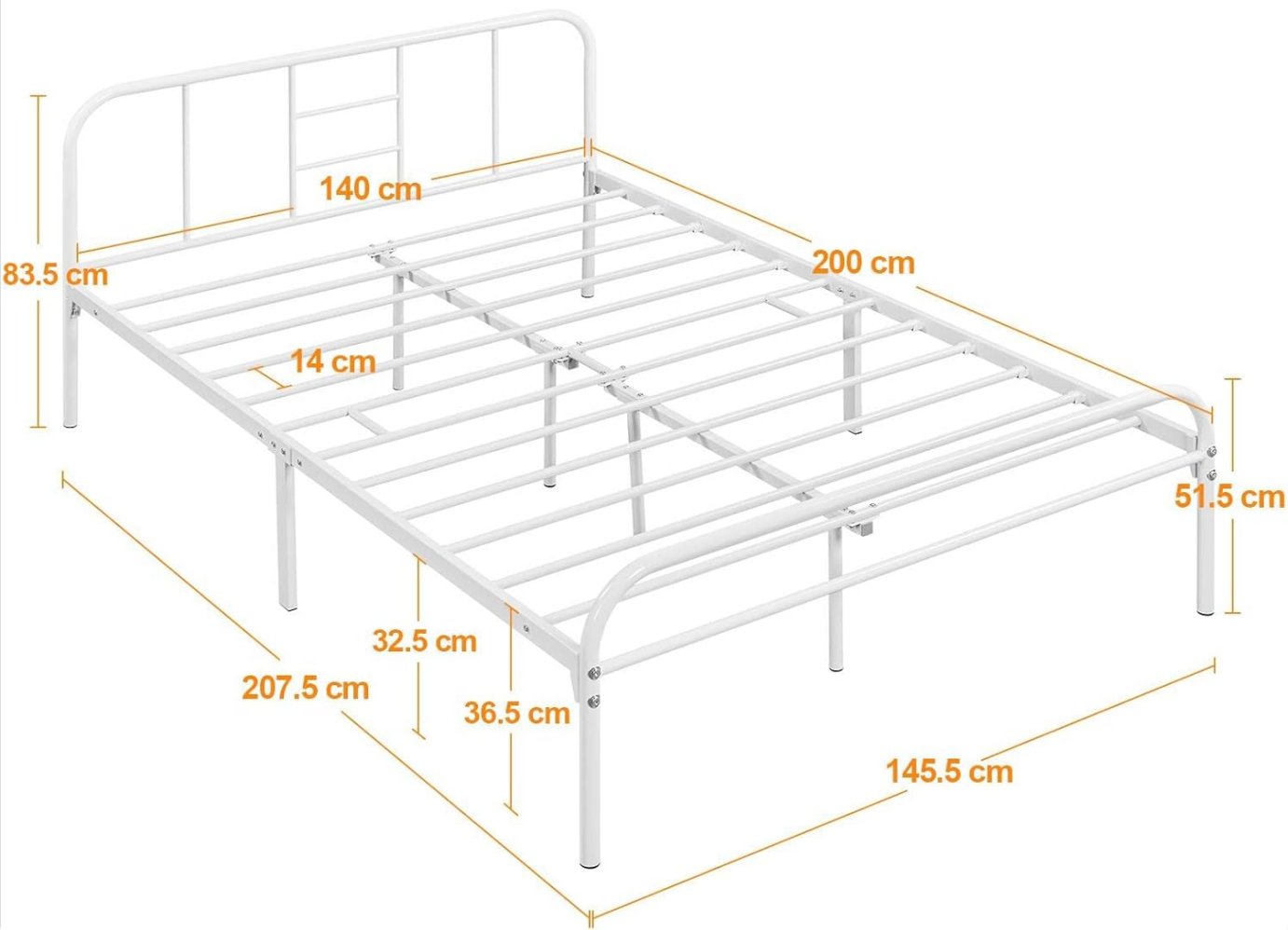


Image: Technical drawing illustrating all key dimensions of the bed frame, including length, width, height, and under-bed clearance.

SETUP AND ASSEMBLY

Assembly of the Yaheetech Metal Double Bed Frame is designed to be straightforward. Follow these steps carefully:

- 1. Unpack Components:** Carefully unpack all parts from the box and lay them out on a clean, soft surface (e.g., a carpet or blanket) to prevent scratches. Verify all parts are present against the included parts list (not provided in input, so general instruction).
- 2. Assemble Frame Sections:** Begin by connecting the main frame sections. Align the iron pipes with the corresponding notches and press firmly to secure them.

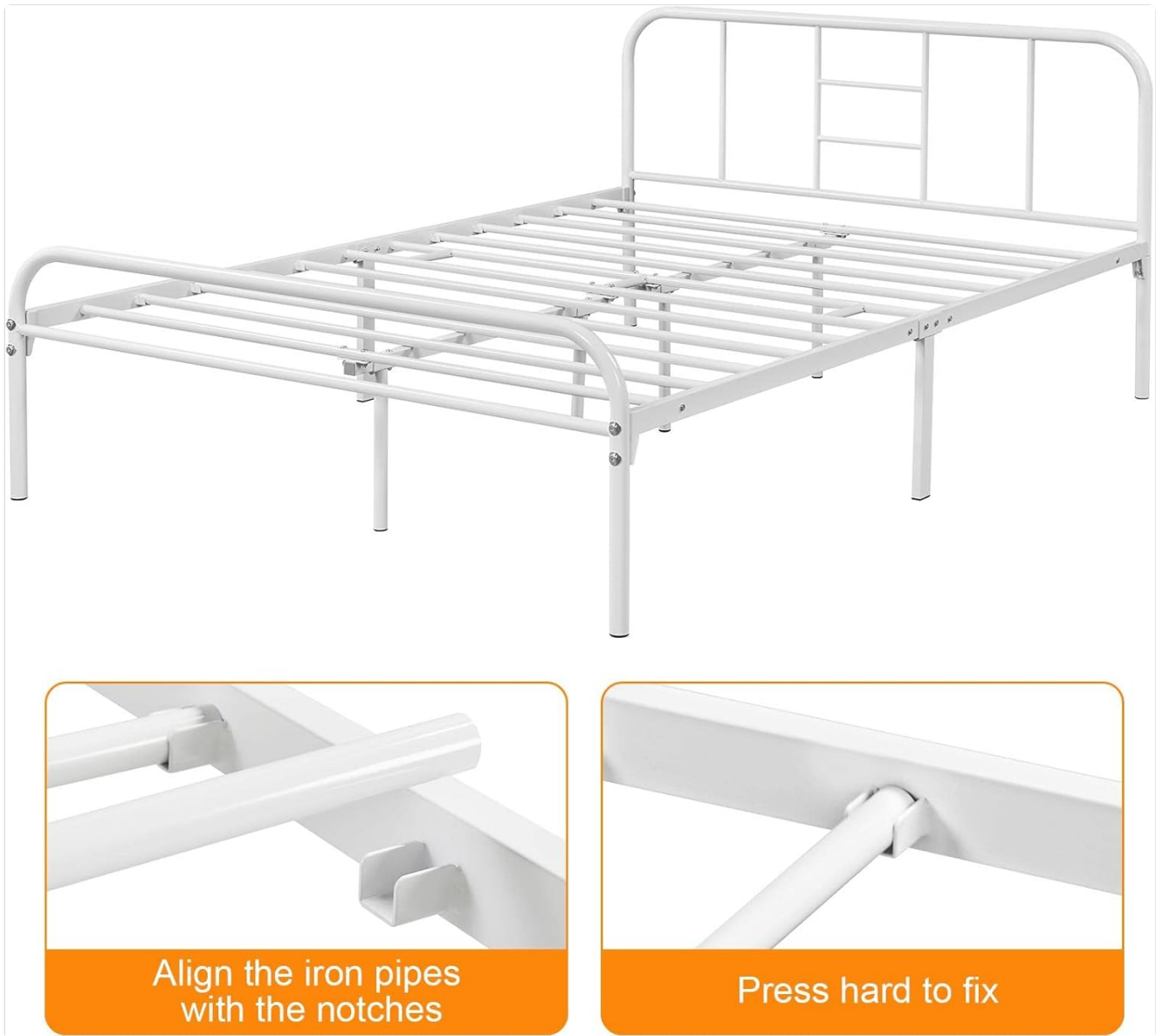


Image: Visual guide for connecting frame components, showing the alignment of pipes with notches and the action of pressing to secure.

- 3. Secure Connections with L-shaped Plates:** For additional stability, attach the L-shaped plates at designated connection points using the provided hardware (bolts and nuts). Ensure these are tightened securely.



Image: A detailed view of the L-shaped plates and their attachment points, demonstrating how they enhance the frame's stability.

4. **Install Slats:** Insert the metal slats into their designated slots or attach them to the frame as per the specific design. Ensure each slat is firmly in place to provide proper mattress support.

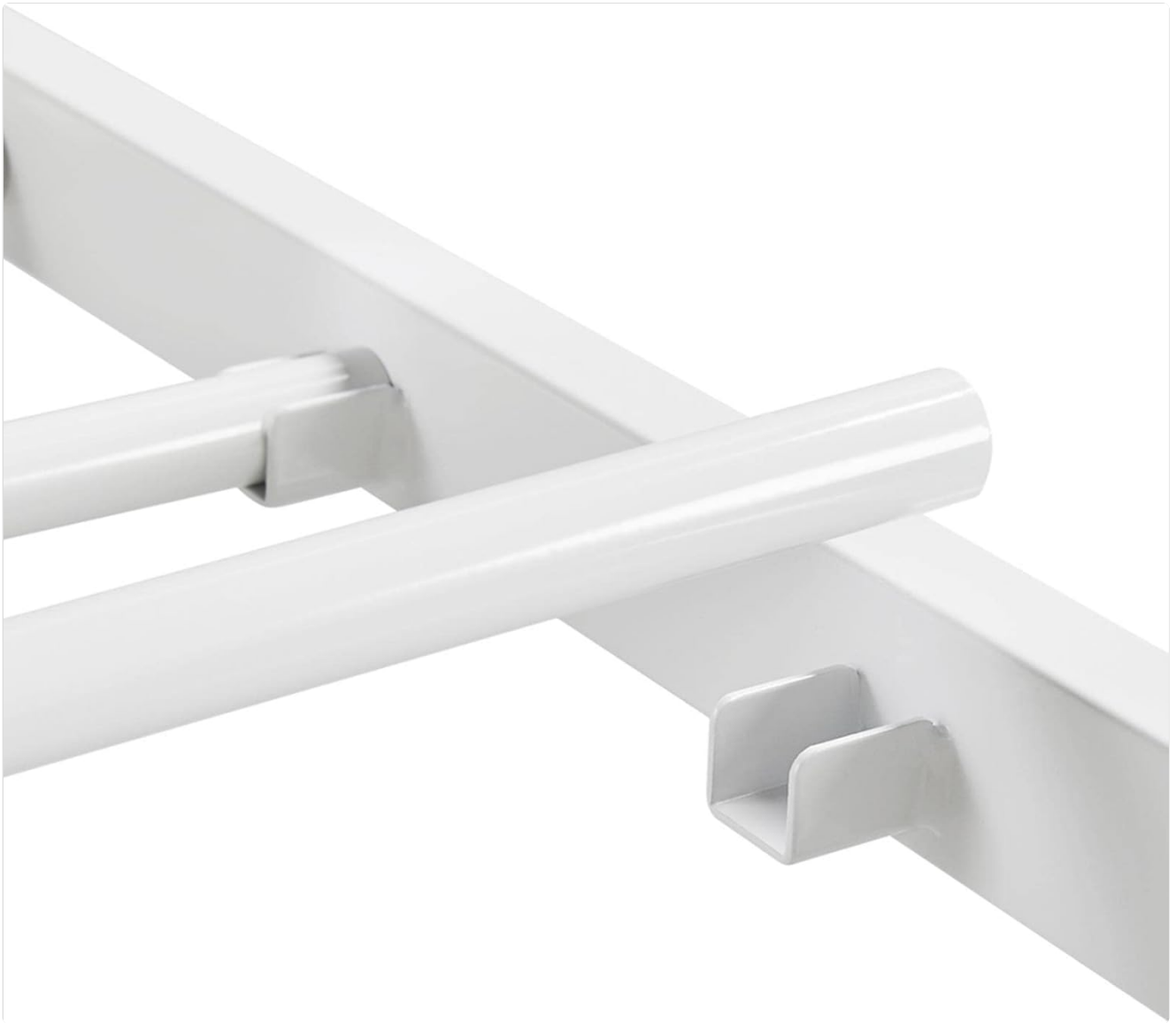


Image: A close-up showing the connection mechanism for the metal slats within the bed frame.

5. **Attach Headboard and Footboard:** Connect the headboard and footboard to the assembled frame. Ensure all bolts are tightened.
6. **Final Tightening:** Once all components are assembled, go back and re-tighten all bolts and screws to ensure maximum stability. Do not overtighten.
7. **Place Mattress:** Carefully place your 140x200 cm mattress onto the assembled bed frame.

Note: For detailed visual instructions, refer to the assembly manual included with your product packaging.

OPERATING AND USAGE

Using your Yaheetech Metal Double Bed Frame is straightforward:

- **Mattress Compatibility:** This bed frame is designed for a 140 cm x 200 cm (Double) mattress. Using a mattress of a different size may affect stability and support.
- **Weight Distribution:** Always distribute weight evenly across the bed surface. Avoid standing or jumping on the bed frame, as this can cause damage or injury.
- **Under-Bed Storage:** Utilize the 32 cm under-bed clearance for storage. Ensure any storage containers or items do not obstruct the bed frame's legs or stability.
- **Movement:** When moving the bed frame, lift it rather than dragging it to prevent damage to the frame or your floor, despite the protective footpads.

MAINTENANCE

Regular maintenance will help prolong the life and appearance of your bed frame:

- **Cleaning:** Wipe the metal frame with a soft, damp cloth. For stubborn marks, a mild soap solution can be used, followed by wiping with a clean, dry cloth. Avoid abrasive cleaners or harsh chemicals, as these can damage the powder coating finish.
- **Hardware Check:** Periodically (e.g., every 3-6 months) check all bolts and screws to ensure they remain tight. Retighten if necessary, but do not overtighten. Loose connections can lead to squeaking or instability.
- **Environmental Conditions:** Avoid exposing the bed frame to excessive moisture or extreme temperature changes, which could affect the metal and finish.

TROUBLESHOOTING

Here are solutions to common issues you might encounter:



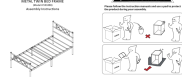
Problem	Possible Cause	Solution
Bed frame squeaks	Loose bolts or connections.	Check and tighten all bolts and screws. Ensure all parts are properly aligned.
Bed frame feels unstable/wobbly	Incomplete or incorrect assembly; loose connections.	Review the assembly instructions to ensure all steps were followed correctly. Tighten all bolts. Ensure the bed is on a flat, even surface.
Mattress slides on the frame	Incorrect mattress size; slats not properly installed.	Ensure your mattress is the correct size (140x200 cm). Verify that all metal slats are securely in their designated positions.
Damage to floor	Missing or damaged protective footpads; dragging the bed.	Ensure all protective footpads are securely attached to the bottom of each leg. Always lift the bed frame when moving it, rather than dragging.

WARRANTY AND SUPPORT

Specific warranty details for the Yaheetech Metal Double Bed Frame (Model YA-00120480) are not provided in this manual. For information regarding warranty coverage, claims, or technical support, please contact Yaheetech customer service directly or refer to the documentation included with your purchase.

[Visit Yaheetech Store on Amazon](#)

Related Documents

<p>Yaheetech</p> <p>615255(135x190cm)&(160x200cm)&(150x200cm)&(140x200cm)</p>  <p>1. Please read the instruction manual carefully before assembling the bed. 2. Please read the safety warnings carefully and follow the safety instructions. 3. Please read the instruction manual carefully and follow the safety instructions. 4. Please read the instruction manual carefully and follow the safety instructions. 5. Please read the instruction manual carefully and follow the safety instructions.</p> <p>100</p>	<p>Yaheetech 615255 Bed Frame Assembly Instructions</p> <p>Comprehensive assembly instructions for the Yaheetech 615255 bed frame, covering all sizes (135x190cm, 160x200cm, 150x200cm, 140x200cm). Includes a detailed parts list, step-by-step visual guidance translated into English, care instructions, and contact information.</p>
<p>IMPORTANT!WICHTIG!ATENCIÓN IMPORTANT!IMPORTANTE</p> <p>⚠️</p> <p>1. Please read the instruction manual carefully before assembling the bed. 2. Please read the safety warnings carefully and follow the safety instructions. 3. Please read the instruction manual carefully and follow the safety instructions. 4. Please read the instruction manual carefully and follow the safety instructions. 5. Please read the instruction manual carefully and follow the safety instructions.</p> <p>⌚</p> <p>1. Please read the instruction manual carefully before assembling the bed. 2. Please read the safety warnings carefully and follow the safety instructions. 3. Please read the instruction manual carefully and follow the safety instructions. 4. Please read the instruction manual carefully and follow the safety instructions. 5. Please read the instruction manual carefully and follow the safety instructions.</p> <p>⚠️</p> <p>1. Please read the instruction manual carefully before assembling the bed. 2. Please read the safety warnings carefully and follow the safety instructions. 3. Please read the instruction manual carefully and follow the safety instructions. 4. Please read the instruction manual carefully and follow the safety instructions. 5. Please read the instruction manual carefully and follow the safety instructions.</p> <p>⚠️</p> <p>1. Please read the instruction manual carefully before assembling the bed. 2. Please read the safety warnings carefully and follow the safety instructions. 3. Please read the instruction manual carefully and follow the safety instructions. 4. Please read the instruction manual carefully and follow the safety instructions. 5. Please read the instruction manual carefully and follow the safety instructions.</p> <p>⚠️</p> <p>1. Please read the instruction manual carefully before assembling the bed. 2. Please read the safety warnings carefully and follow the safety instructions. 3. Please read the instruction manual carefully and follow the safety instructions. 4. Please read the instruction manual carefully and follow the safety instructions. 5. Please read the instruction manual carefully and follow the safety instructions.</p> <p>100</p>	<p>Yaheetech Minimalist Metal Platform Bed Assembly Instructions</p> <p>Step-by-step assembly guide for the Yaheetech Minimalist Metal Platform Bed, featuring a detailed parts list, safety warnings, and clear instructions for putting together your bed frame.</p>
<p>Yaheetech</p> <p>611840</p>  <p>1. Please read the instruction manual carefully before assembling the bed. 2. Please read the safety warnings carefully and follow the safety instructions. 3. Please read the instruction manual carefully and follow the safety instructions. 4. Please read the instruction manual carefully and follow the safety instructions. 5. Please read the instruction manual carefully and follow the safety instructions.</p> <p>100</p>	<p>Yaheetech 611840 Queen Bed Frame Assembly Instructions</p> <p>Detailed assembly guide for the Yaheetech 611840 Queen Velvet Upholstered Platform Bed Frame. Includes parts list, step-by-step instructions, and support contact information.</p>
<p>Yaheetech</p> <p>IMPORTANT!</p>  <p>1. Please read the instruction manual carefully before assembling the bed. 2. Please read the safety warnings carefully and follow the safety instructions. 3. Please read the instruction manual carefully and follow the safety instructions. 4. Please read the instruction manual carefully and follow the safety instructions. 5. Please read the instruction manual carefully and follow the safety instructions.</p> <p>100</p>	<p>Yaheetech Metal Twin Bed Frame (Model #591898) Assembly Instructions</p> <p>This document provides assembly instructions for the Yaheetech Metal Twin Bed Frame, Model #591898. It includes a parts list, step-by-step assembly diagrams with textual descriptions, and important safety warnings.</p>