

Aune X7s Pro

Aune X7s Pro Class-A Headphone Amplifier

INSTRUCTION MANUAL

Introduction

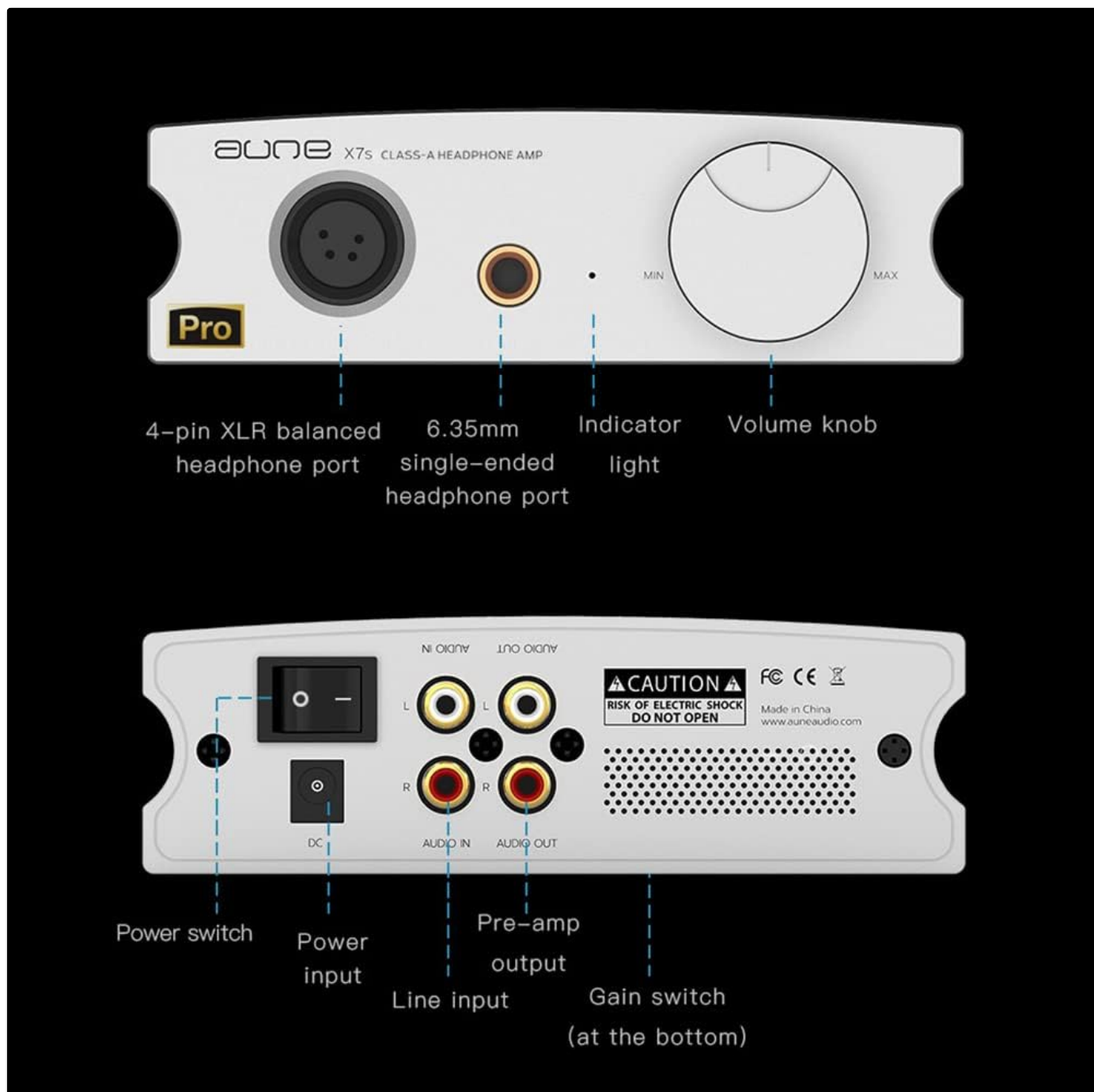
Thank you for choosing the Aune X7s Pro Class-A Headphone Amplifier. This high-performance amplifier is designed to deliver exceptional audio quality with its Class-A biasing design, offering both single-ended and balanced outputs. With three selectable gain levels, it provides versatile compatibility for a wide range of headphones, earphones, IEMs, active speakers, and power amplifiers. Its compact size allows for flexible placement in various listening environments.



Front view of the Aune X7s Pro Class-A Headphone Amplifier.

Product Overview and Components

Familiarize yourself with the various ports and controls of your Aune X7s Pro amplifier.



Detailed diagram of the Aune X7s Pro's front and rear panels, indicating all ports and controls.

Front Panel:

- **4-pin XLR Balanced Headphone Port:** For connecting headphones with a balanced XLR connector.
- **6.35mm Single-Ended Headphone Port:** For connecting headphones with a standard 6.35mm (1/4 inch) stereo plug.
- **Indicator Light:** Displays the operational status of the amplifier.
- **Volume Knob:** Adjusts the output volume level.

Rear Panel:

- **Power Switch:** Turns the amplifier on or off.
- **Power Input:** Connects to the external power adapter.
- **Line Input (RCA):** For connecting audio sources (e.g., DAC, CD player) via RCA cables.
- **Pre-amp Output (RCA):** For connecting to active speakers or a power amplifier.
- **Gain Switch (at the bottom):** A physical switch located on the underside of the unit to select between three gain levels.

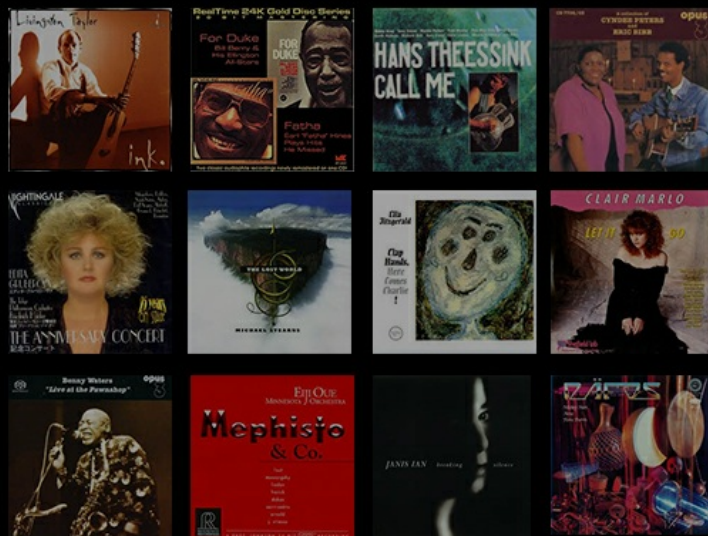
Setup

Follow these steps for initial setup of your Aune X7s Pro:

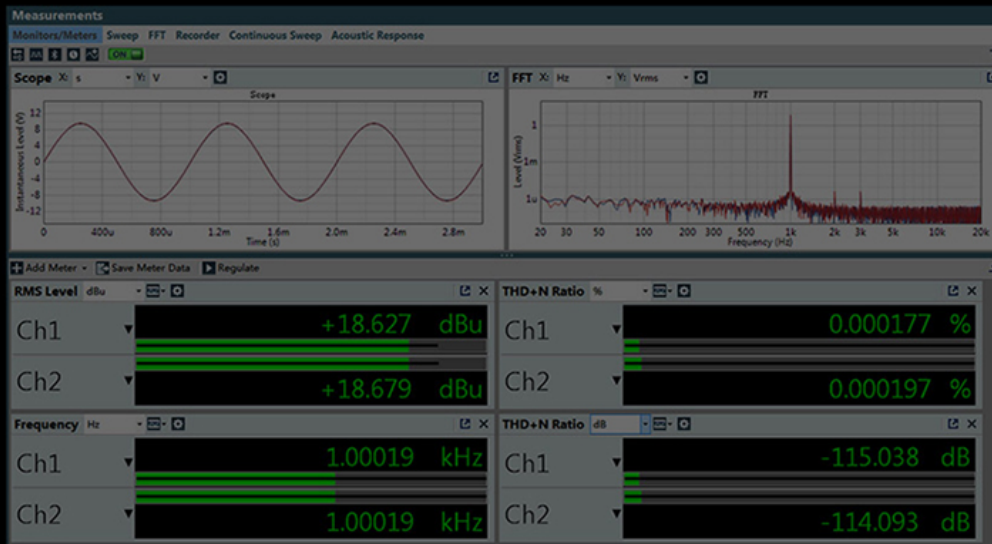
1. **Power Connection:** Connect the provided power adapter to the Power Input port on the rear panel of the X7s Pro, then plug the adapter into a suitable power outlet. Ensure the device operates on 110V as indicated by the manufacturer.
2. **Audio Source Connection:** Connect your audio source (e.g., DAC, music player) to the Line Input (RCA) ports on the rear panel using high-quality RCA cables. Ensure left and right channels are correctly matched.
3. **Headphone Connection:** Connect your headphones to either the 4-pin XLR Balanced Headphone Port or the 6.35mm Single-Ended Headphone Port on the front panel. Choose the appropriate connection type for your headphones.
4. **Optional Pre-amp Connection:** If using the X7s Pro as a pre-amplifier, connect the Pre-amp Output (RCA) ports on the rear panel to your active speakers or power amplifier.
5. **Set Gain Level:** Before powering on, locate the gain switch on the bottom of the unit. Select the appropriate gain level (0dB, 12dB, or 20dB) based on the sensitivity of your headphones. Start with a lower gain setting for sensitive headphones/IEMs and increase if more power is needed.

Professional Tuning

The tuning is based on real instrument sounds and music pieces referencing, leading to the signature that is natural and full of musicality.



Visual representation of key features including RCA Line Out, Balanced XLR, 6.35mm Headphone Out, 3 Gain Levels, Class-A, Dual Voltage, RCA Line-In, and Analog Potentiometer.



High-Spec

After four PCBA optimizations, the actual measurement of frequency response (20-80k) reaches +0.3dB, THD+N reaches 0.0002%. Wide soundstage, dark background, abundant details.

Important caution: This device operates on 110V. Please verify local voltage compatibility before use.

Operating Instructions

Once set up, operating the Aune X7s Pro is straightforward:

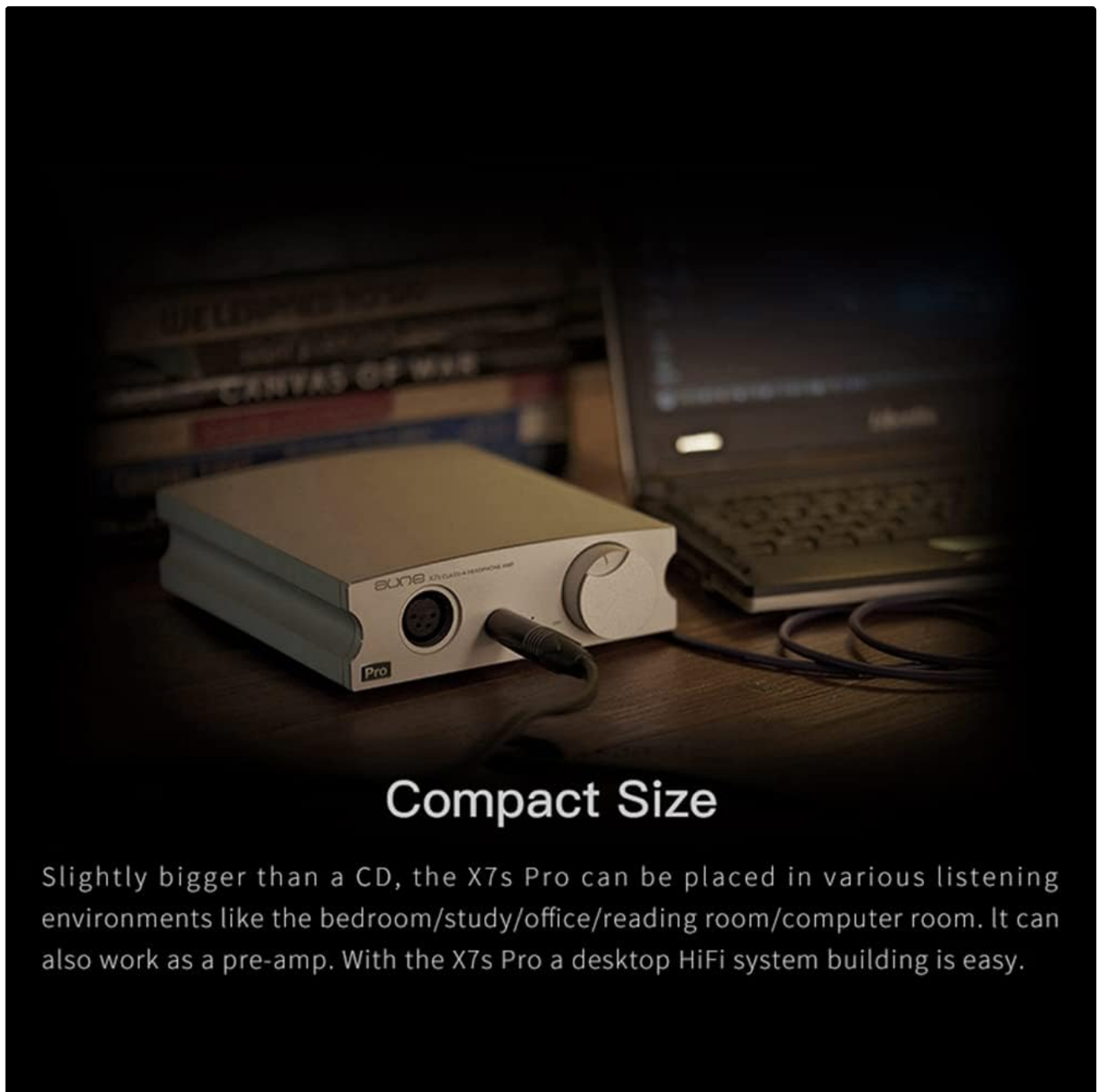
- Power On:** Flip the Power Switch on the rear panel to the 'On' position. The indicator light on the front panel will illuminate.
- Adjust Volume:** Slowly turn the Volume Knob clockwise to increase the volume to a comfortable listening level. Always start with the volume at its minimum before playing audio to prevent sudden loud sounds.
- Gain Level Selection:** The X7s Pro features three gain levels (0dB, 12dB, 20dB) to match various headphone sensitivities. Adjust the gain switch on the bottom of the unit as needed. Lower gain is suitable for highly sensitive IEMs and headphones, while higher gain provides more power for demanding headphones.
- Balanced vs. Single-Ended Output:** Use the 4-pin XLR output for balanced headphones to take advantage of the amplifier's balanced architecture, which can offer improved noise rejection and power delivery. The 6.35mm output is for standard single-ended headphones.
- Using as a Pre-amplifier:** When connected to active speakers or a power amplifier via the RCA Pre-amp Output, the X7s Pro acts as a volume control and signal buffer for your audio system.



Single-Ended & Balanced

The X7s Pro has headphone output of both single-ended 6.35mm and balanced XLR, giving you two different tastes.

The X7s Pro offers both single-ended 6.35mm and balanced XLR headphone outputs for different audio preferences.



Compact Size

Slightly bigger than a CD, the X7s Pro can be placed in various listening environments like the bedroom/study/office/reading room/computer room. It can also work as a pre-amp. With the X7s Pro a desktop HiFi system building is easy.

Despite its powerful performance, the X7s Pro maintains a compact size, making it suitable for various listening environments.

Official product video showcasing the Aune X7s Pro Headphone Amplifier's features and design. This video highlights the Class-A amplification, compact size, and balanced/single-ended outputs, demonstrating its capability to bring out the full potential of headphones.

Maintenance

To ensure the longevity and optimal performance of your Aune X7s Pro, follow these maintenance guidelines:

- **Cleaning:** Use a soft, dry cloth to wipe the exterior of the unit. Avoid using liquid cleaners or abrasive materials, as they may damage the finish.
- **Ventilation:** Ensure the amplifier is placed in a well-ventilated area. Do not block the ventilation holes, as proper airflow is crucial for heat dissipation, especially for a Class-A amplifier.
- **Environment:** Keep the unit away from direct sunlight, heat sources, excessive dust, and moisture.
- **Power Off When Not in Use:** If the amplifier will not be used for an extended period, it is advisable to power it off and unplug it from the wall outlet.

Troubleshooting

If you encounter any issues with your Aune X7s Pro, please refer to the following common problems and solutions:

- **No Sound:**
 - Check if the power adapter is securely connected and the unit is powered on.
 - Verify that the audio source is properly connected to the Line Input (RCA) and is playing.
 - Ensure your headphones are fully plugged into the correct output port (XLR or 6.35mm).
 - Increase the volume slowly using the Volume Knob.
 - Check the gain switch setting; a very low gain might result in inaudible sound with certain headphones.
- **Distorted Sound:**
 - Reduce the volume level.
 - Ensure the gain setting is appropriate for your headphones; too high a gain for sensitive headphones can cause distortion.
 - Check audio cables for damage or loose connections.
 - Test with a different audio source or headphones to isolate the issue.
- **Unit Does Not Power On:**
 - Confirm the power adapter is correctly plugged into both the unit and a working wall outlet.
 - Ensure the power switch on the rear panel is in the 'On' position.

If the problem persists after trying these solutions, please contact Aune customer support for further assistance.

Specifications

Key technical specifications for the Aune X7s Pro Class-A Headphone Amplifier:

Feature	Specification
Frequency Response	20~80 kHz (± 0.3 dB)
THD+N	0.0002%
Headphone Outputs	4-pin XLR Balanced, 6.35mm Single-Ended
Gain Levels	3 (0dB, 12dB, 20dB)
Pre-amp Output	RCA
Line Input	RCA
Package Dimensions	9.72 x 7.24 x 4.33 inches
Item Weight	3.94 pounds
Power Requirement	110V (Please check local voltage)



Rigorous Component Selection

Measurement results demonstrating the high specifications of the Aune X7s Pro, including frequency response and THD+N.



The tuning of the Aune X7s Pro is based on real instrument sounds and music pieces, aiming for a natural and musical sound signature.

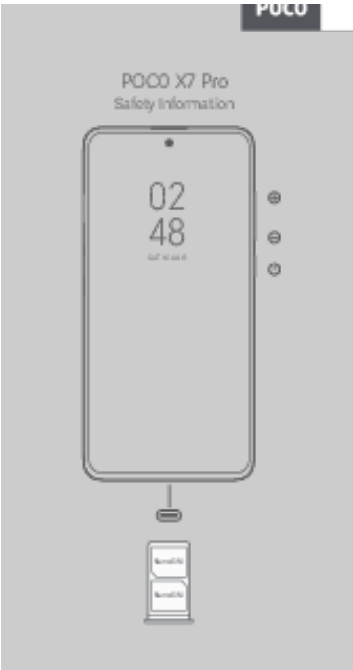
Warranty and Support

Aune is committed to providing excellent customer service and product support.

- **Warranty:** All Aune products come with a 2-year after-sales service. This covers manufacturing defects and ensures your product performs as expected.
- **Customer Service:** If you encounter any issues with your product during use, or if you receive a product with traces of use (which may be due to logistics), please contact the seller directly. They will assist you promptly to resolve the problem.
- **Authenticity:** All items are new and delicately packaged.

For more information or to explore other Aune products, please visit the [Aune Store on Amazon](#).

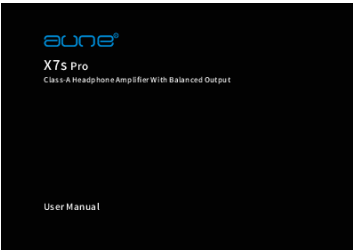
Documents - Aune – X7s Pro



[POCO X7 Pro Safety Information](#)

This document provides safety information for the POCO X7 Pro smartphone, covering EU and FCC regulations, RF exposure (SAR) information, frequency bands, power, safety precautions, and legal information. It details compliance with directives, SAR limits, and safe usage guidelines.

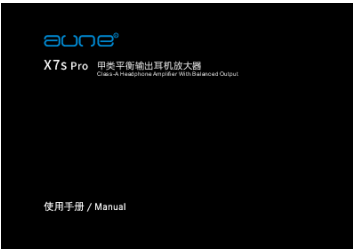
lang:en score:35 filesize: 463.56 K page_count: 33 document date: 2025-07-17



[\[pdf\] User Manual](#)

X7s Pro 20221203 cdr qk X7sProSMSen aune hifidiy net en X7sPro |||
R X7sPro Class-AHeadphoneAmplifierWithBalancedOutput UserManual Preface
Dear Customers, Thanksfor ... tput 3 View of bottom panel and name of each part 3.1
3.1Gaincontrolsoftheheadphoneoutput 4 The **X7s Pro** is the latest class-A balanced
output headphone amplifier of aune with eight T0220 transisto...

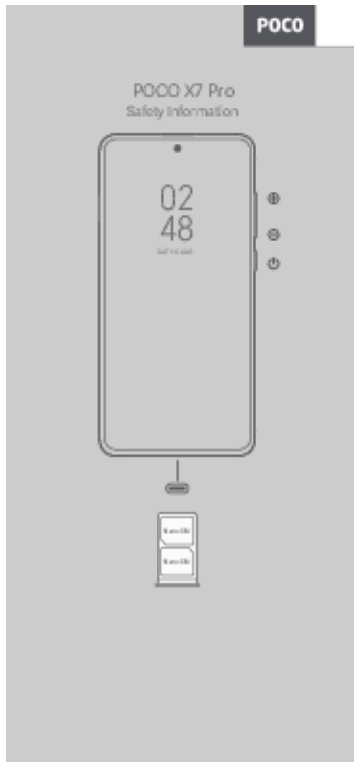
lang:en score:24 filesize: 1.08 M page_count: 14 document date: 2022-12-26



[\[pdf\]](#)

X7s Pro 20221203 cdr qk X7sProSMS aune hifidiy net X7sPro |||
R X7sPro Class-A Headphone Amplifier With Balanced Output XX7sPro X7sPro 1 1.1
1.2 1.3 1.4 2 2.1 2.2 2.3 2.4 3 3.1 3.1 4 **X7s Pro** aune 8T0220 RCA 1 RCA 1 6.35mm
Frequency response20Hz-200kHz 0.3dB TYP THD n 0.00014 1kHz 300 TYP THD n
0.00013 1kHz 300 XLR T...

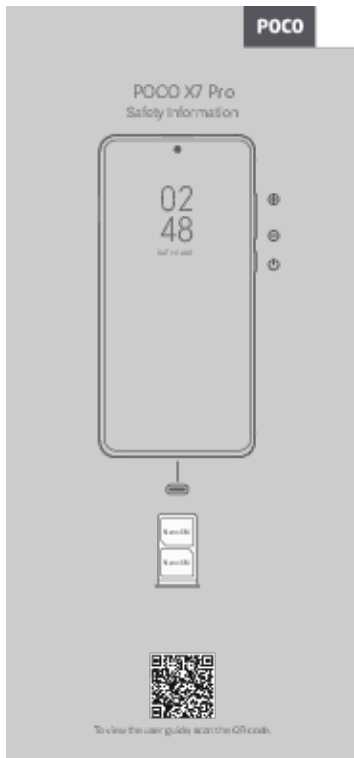
lang:fr score:23 filesize: 1.58 M page_count: 14 document date: 2022-12-07



[\[pdf\]](#) Guide Declaration of Conformity SAR Rating

User Guide Xiaomi Malaysia O10 SI 14 gl123 alsgp0 mi fds POCO X7 Pro |||

POCO X7 Pro Safety Information 02 48 SAT. 16 AUG. Nano-SIM Nano-SIM English
EU Regulations RED Declaration of Conformity Xiaomi Communications Co., Ltd.
hereby declares that this GSM / GPRS / EDGE / UMTS / LTE / 5G NR Digital Mobile
Phone with Bluetooth and Wi-Fi 2412DPC0AG is in compliance with...
lang:en score:20 filesize: 1.68 M page_count: 32 document date: 2025-01-08



[\[pdf\]](#) Decleration of Conformity SAR Rating

POCO X7 Pro Safety Information mobilplus sk EU Regulations RED Declaration of Conformity Xiaomi
Communications Co Ltd hereby declares that this GSM GPRS EDGE UMTS LTE 5G NR Digital Mobile
Phone with Bluetooth and Wi Fi 2412DPC0AG is in compliance the poco x7 pro cz n vod a bezp list user
related files |||

POCO X7 Pro Safety Information 02 48 SAT. 16 AUG. Nano-SIM Nano-SIM To view
the user guide, scan the QR code. English EU Regulations RED Declaration of
Conformity Xiaomi Communications Co., Ltd. hereby declares that this GSM / GPRS /
EDGE / UMTS / LTE / 5G NR Digital Mobile Phone with Bluetooth ...
lang:en score:13 filesize: 2.07 M page_count: 33 document date: 2024-11-20

POCO

POCO X7 Pro
Safety Information



[\[pdf\]](#) Decleration of Conformity SAR Rating

Xiaomi Deutschland O10 SI 14 gl123 alsqp0 mi fds POCO X7 Pro |||

POCO X7 Pro Safety Information 02 48 SAT. 16 AUG. Nano-SIM Nano-SIM English
EU Regulations RED Declaration of Conformity Xiaomi Communications Co., Ltd.

hereby declares that this GSM / GPRS / EDGE / UMTS / LTE / 5G NR Digital Mobile
Phone with Bluetooth and Wi-Fi 2412DPC0AG is in compliance with...

lang:en score:13 filesize: 1.82 M page_count: 32 document date: 2025-01-08