

[Manuals.plus](#) /

> [Bosch](#) /

> Bosch Series 6 BGC41XHYG Bagless Vacuum Cleaner User Manual

Bosch BGC41XHYG

Bosch Series 6 BGC41XHYG Bagless Vacuum Cleaner User Manual

Model: BGC41XHYG | Brand: Bosch

1. INTRODUCTION

This manual provides essential information for the safe and efficient operation of your Bosch Series 6 BGC41XHYG bagless vacuum cleaner. Please read these instructions carefully before using the appliance for the first time and keep them for future reference.



Image: The Bosch Series 6 BGC41XHYG bagless vacuum cleaner, a powerful and quiet appliance for thorough home cleaning.

The Bosch Series 6 BGC41XHYG is a powerful and quiet bagless vacuum cleaner designed for thorough cleaning. It features a ProHygienic system, SmartSensor Control for optimal performance, and an UltraAllergy filter, making it ideal for allergy sufferers. This model was recognized as a test winner by Stiftung Warentest (9/2024).

TESTSIEGER

Stiftung
Warentest

test

1

GUT (2,2)

Bosch Serie 6
Beutelloser Staubsauger
BGC41XHYG

Im Test:
5 Bodenstaubsauger
ohne Beutel

Ausgabe 9/2024

www.test.de

24IG03

Image: The official test winner badge from Stiftung Warentest (Issue 9/2024) for the Bosch Series 6 BGC41XHYG.



Effiziente Reinigung dank sensorischer Leistungsüberwachung

Image: An illustration demonstrating the efficient cleaning process and sensor-controlled performance monitoring of the vacuum cleaner.

2. SAFETY INSTRUCTIONS

- Always ensure the voltage indicated on the rating plate matches your mains voltage.
- Do not vacuum up water, liquids, or damp dirt.
- Do not vacuum up hot ashes, burning cigarette butts, or sharp objects.
- Keep the appliance away from children.
- Never operate the vacuum cleaner without the dust container and filters correctly installed.
- If the power cord is damaged, it must be replaced by the manufacturer, its service agent, or similarly qualified persons to avoid a hazard.
- Unplug the appliance from the mains before cleaning or maintenance.

3. PACKAGE CONTENTS

Your Bosch Series 6 BGC41XHYG vacuum cleaner package includes the following components:

- Bosch Series 6 BGC41XHYG Bagless Vacuum Cleaner unit
- Switchable roller brush (main floor nozzle)
- Hard floor brush
- XXL Upholstery nozzle
- XXL Crevice nozzle
- Furniture brush
- Accessory clip for suction tube
- Suction hose
- Telescopic tube



XXL-Polsterdüse inklusive



XXL-Fugendüse inklusive

Image: Included XXL Upholstery Nozzle and XXL Crevice Nozzle for versatile cleaning.



Möbelpinsel inklusive

Image: The furniture brush is included for gentle cleaning of delicate surfaces.

4. SETUP

1. **Unpacking:** Carefully remove all components from the packaging.
2. **Attach the Hose:** Insert the hose into the suction opening on the main unit until it clicks into place.
3. **Assemble the Telescopic Tube:** Connect the telescopic tube to the hose handle. Adjust the length of the telescopic tube to a comfortable working height.
4. **Attach the Floor Nozzle:** Connect the desired floor nozzle (e.g., switchable roller brush or hard floor brush) to the end of the telescopic tube.
5. **Attach Accessories:** If desired, attach the accessory clip to the telescopic tube to keep the crevice nozzle and upholstery nozzle readily available.
6. **Power Connection:** Extend the power cord and plug it into a suitable mains socket.



Einfach in der Handhabung

Image: The ergonomic design allows for easy handling and transport, such as carrying the vacuum cleaner up stairs.

5. OPERATING INSTRUCTIONS

5.1 Powering On/Off

- To switch on the vacuum cleaner, press the On/Off foot pedal.
- To switch off, press the On/Off foot pedal again.

5.2 Suction Power Adjustment

The vacuum cleaner features SmartSensor Control, which monitors performance to ensure optimal cleaning. You can also manually adjust the suction power using the control dial on the main unit for different surfaces.

- **Minimum Power:** For delicate fabrics, curtains, or light dusting.
- **Medium Power:** For general cleaning of upholstery and carpets.
- **Maximum Power:** For hard floors and heavily soiled areas.

5.3 Using Attachments

- **Switchable Roller Brush:** Suitable for both carpets and hard floors. Use the foot switch on the nozzle to retract or extend the bristles.
- **Hard Floor Brush:** Specifically designed for thorough cleaning of hard floors with joints and crevices, such as tiles or wooden floors.



Hartbodendüse inklusive

Image: The hard floor nozzle effectively cleans dirt from tiled surfaces.

- **XXL Upholstery Nozzle:** Ideal for quick cleaning of upholstered furniture, mattresses, and cushions.
- **XXL Crevice Nozzle:** Perfect for reaching narrow gaps, corners, and edges.
- **Furniture Brush:** Use for gentle cleaning of delicate surfaces like furniture, shelves, and blinds.

6. MAINTENANCE

Regular maintenance ensures optimal performance and extends the lifespan of your vacuum cleaner.

6.1 Emptying the Dust Container

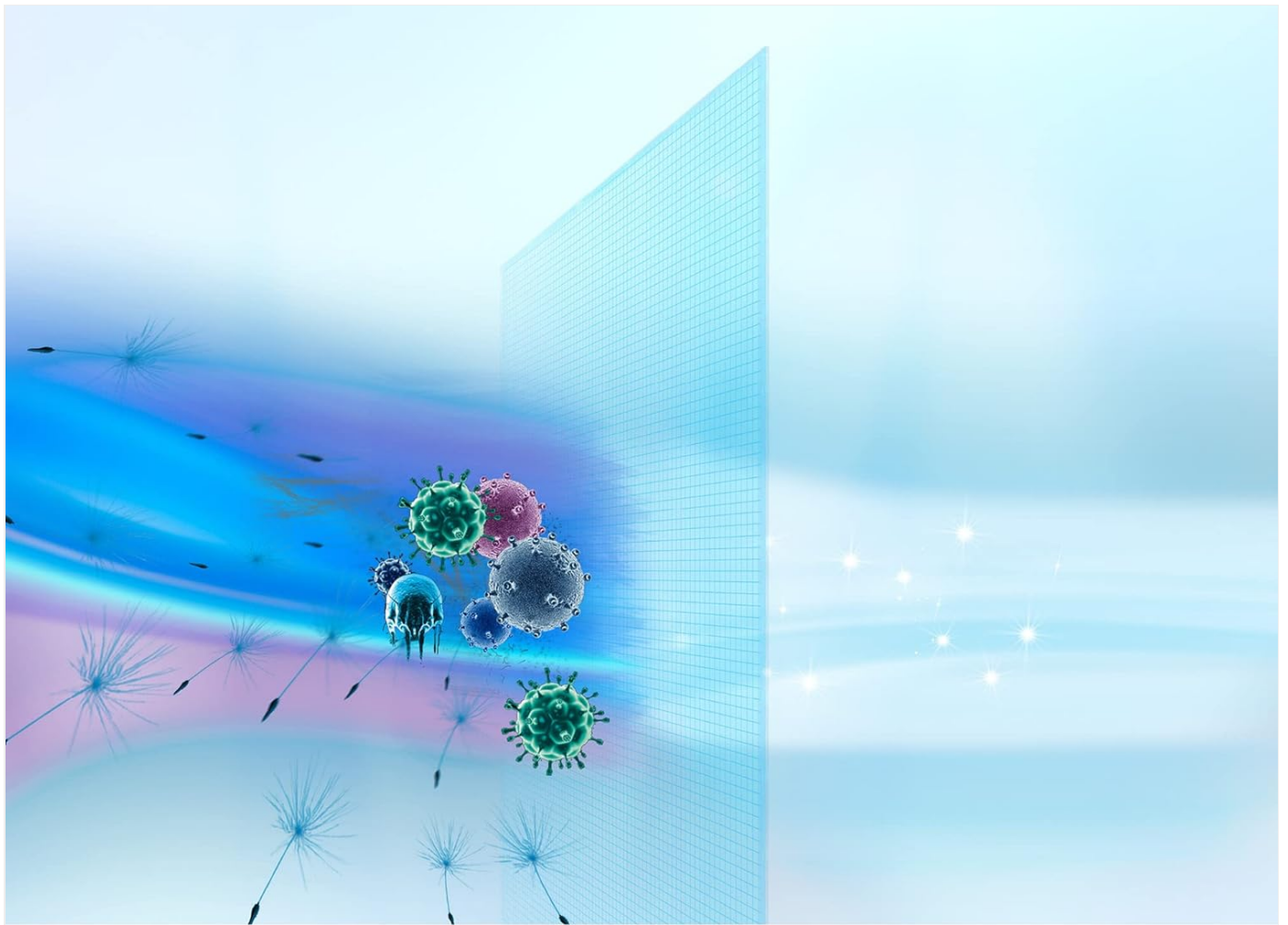
1. Switch off the vacuum cleaner and unplug it from the mains.
2. Press the release button for the dust container and remove it from the main unit.
3. Hold the dust container over a waste bin and open the bottom flap to empty the contents.
4. Close the flap securely and reinsert the dust container into the vacuum cleaner until it clicks.

Note: Empty the dust container regularly, preferably after each use or when the MAX indicator is reached, to maintain suction power.

6.2 Cleaning the UltraAllergy Filter

The UltraAllergy filter is washable and designed for particularly clean exhaust air, making it ideal for allergy sufferers.

1. Switch off the vacuum cleaner and unplug it.
2. Remove the dust container as described above.
3. Locate and remove the UltraAllergy filter from its housing.
4. Rinse the filter under cold running water until the water runs clear. Do not use detergents.
5. Allow the filter to air dry completely for at least 24 hours before reinserting it. Do not dry in direct sunlight or on a radiator.
6. Once completely dry, reinsert the filter into its housing and then reattach the dust container.



Hervorragende **Filtration**

Image: The vacuum cleaner features an excellent filtration system, including the UltraAllergy filter, to capture fine particles and allergens.



Speziell für Allergiker

Image: The UltraAllergy filter ensures clean exhaust air, making the vacuum cleaner suitable for allergy sufferers.

6.3 Cleaning Other Components

- Wipe the exterior of the vacuum cleaner with a soft, damp cloth. Do not use abrasive cleaners.
- Check nozzles and tubes for blockages regularly and remove any debris.

7. TROUBLESHOOTING

Problem	Possible Cause	Solution
No suction power or reduced suction.	<ul style="list-style-type: none"> • Dust container is full. • Filter is dirty or blocked. • Hose, tube, or nozzle is blocked. 	<ul style="list-style-type: none"> • Empty the dust container. • Clean or replace the filter. • Check and clear any blockages.

Problem	Possible Cause	Solution
Vacuum cleaner does not switch on.	<ul style="list-style-type: none"> • Power cord not plugged in. • No power from the socket. 	<ul style="list-style-type: none"> • Plug in the power cord securely. • Check the power supply (e.g., test with another appliance).
Unusual noise during operation.	<ul style="list-style-type: none"> • Blockage in the hose or nozzle. • Foreign object in the fan. 	<ul style="list-style-type: none"> • Check and clear any blockages. • If the noise persists, contact customer service.

8. SPECIFICATIONS



Image: Key dimensions of the Bosch Series 6 BGC41XHYG vacuum cleaner: 47.4 cm (length), 32.4 cm (width), 26.7 cm (height).

Feature	Detail
---------	--------

Feature	Detail
Model Number	BGC41XHYG
Brand	Bosch
Type	Bagless Canister Vacuum Cleaner
Power Source	Corded Electric
Voltage	240 Volts
Wattage	750 Watts
Motor Power	1.02 horsepower
Noise Level	68 Decibels
Dust Container Capacity	2.4 Liters
Filter Type	Washable UltraAllergy Filter
Item Weight	8.3 Kilograms
Dimensions (L x W x H)	47.4 x 32.4 x 26.7 cm
Hose Length	1.57 Meters
Control Method	Tactile
Connectivity Technology	WLAN <i>(Note: This specification is listed in the product data; however, typical vacuum cleaners do not feature WLAN connectivity. Please refer to the official Bosch website for clarification on any smart features.)</i>

9. WARRANTY AND SUPPORT

9.1 Motor Warranty

Bosch offers a **10-year motor warranty** on this appliance, ensuring consistent high performance thanks to Bosch motor technology "Made in Germany".



Image: Official badge indicating the 10-year motor warranty provided by Bosch.

For detailed warranty conditions, please visit the official Bosch website: bosch-home.com.

9.2 Customer Support

Should you have any questions, require technical assistance, or need to arrange a service, please contact Bosch customer support. Refer to your product's documentation or the official Bosch website for local contact information.

