



[Manuals.plus](#) /

› [MOMMED](#) /

› MomMed Wearable Breast Pump S21 Instruction Manual

MOMMED S21-01-Gray-White

MomMed Wearable Breast Pump S21 Instruction Manual

Model: S21-01-Gray-White

INTRODUCTION

The MomMed Wearable Breast Pump S21 is designed to provide a comfortable and efficient breast pumping experience. This hands-free, portable electric breast pump features a leak-proof design and multiple suction levels to optimize milk production. This manual provides essential information for the safe and effective use, maintenance, and troubleshooting of your MomMed S21 breast pump.



Image: MomMed S21 Wearable Breast Pumps. These pumps are designed for discreet and hands-free operation.

PRODUCT COMPONENTS

The MomMed S21 Wearable Breast Pump package typically includes the following components:

- Breast Flange
- Valve
- Bottle (Milk Collection Cup)
- Pump Motor Unit
- Charging Cable
- Flange Inserts (various sizes may be included)
- Storage Bags (may be included as an extra)

Upgraded Double-sealed anti-leak design

Cherishing every single drop of breast milk



Image: Upgraded Double-Sealed Anti-Leak Design. This design helps prevent milk leakage and ensures hygienic collection.

SETUP AND ASSEMBLY

Before first use, and after each use, ensure all components that come into contact with breast milk are thoroughly cleaned and sterilized according to the "Maintenance and Cleaning" section.

1. **Inspect Components:** Check all parts for any damage or wear.
2. **Assemble the Pump:**
 - Attach the valve securely to the breast flange.
 - Connect the bottle (milk collection cup) to the bottom of the breast flange.
 - Carefully attach the pump motor unit to the top of the assembled flange and bottle, ensuring a snug fit.
3. **Choose Flange Size:** Select the appropriate breast flange size for your comfort and optimal milk expression. The pump typically comes with a 24mm shield, and inserts may be provided for smaller sizes. Correct flange sizing is

crucial for effective pumping and comfort.

4. **Charge the Pump:** Before initial use, fully charge the pump motor unit using the provided charging cable. A full charge ensures optimal performance.



Image: Discreet and Lightweight Design. The ergonomic semi-circular body allows the pump to fit comfortably and discreetly within a bra.

OPERATING INSTRUCTIONS

Follow these steps for effective operation of your MomMed S21 breast pump:

1. **Positioning:** Once assembled, position the pump securely and comfortably in your bra, ensuring the breast flange forms a good seal around your nipple. The pump should be worn in an upright position.
2. **Power On:** Press and hold the power button for a few seconds to turn the pump on. The display will illuminate.
3. **Select Mode:** The MomMed S21 features multiple modes to optimize milk expression:
 - **Stimulation Mode:** Designed to initiate milk let-down with faster, lighter suction cycles.

- **Expression Mode:** Provides slower, stronger suction cycles for efficient milk expression once let-down occurs.
- **Auto Mode:** Automatically transitions between stimulation and expression phases.

Use the mode selection button to cycle through these options.

4. **Adjust Suction Level:** Use the '+' and '-' buttons to adjust the suction intensity. The pump offers 9 levels (or up to 12 levels depending on the specific model/mode) to allow for comfortable and efficient pumping. Start with a lower level and gradually increase to a comfortable, effective suction.
5. **Pumping Session:** Pump for a duration that is comfortable and effective for you, typically 15-20 minutes per breast.
6. **Pause/Play:** Press the power button briefly to pause or resume the pumping session.
7. **Power Off:** Press and hold the power button to turn the pump off when finished.
8. **Empty Milk:** Carefully remove the pump from your breast. Detach the bottle from the flange and pour the expressed milk into a storage bag or bottle.



3 Modes & 12 Levels

Optimize Your Milk Output

Stimulation ♥



Expression ♡



Auto Mode Ⓐ



Image: 3 Modes & 12 Levels. These settings allow for personalized and optimized milk output.

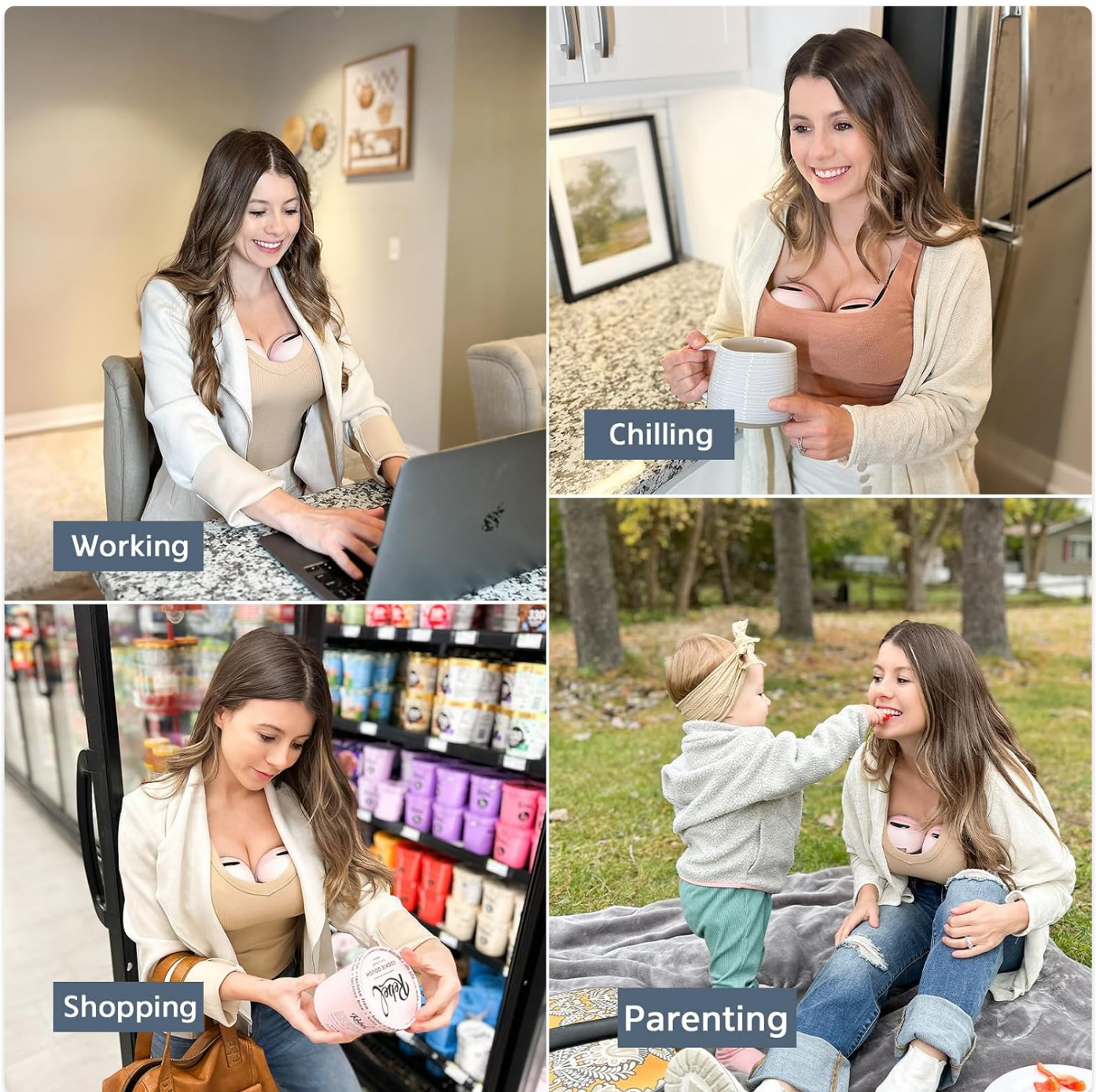


Image: Versatile Usage. The hands-free design enables use during various daily activities.

MAINTENANCE AND CLEANING

Proper cleaning and maintenance are essential for hygiene and the longevity of your breast pump.

Daily Cleaning (After Each Use):

1. **Disassemble:** Separate all parts that came into contact with breast milk (flange, valve, bottle). The motor unit should not be washed.
2. **Rinse:** Rinse all separated parts under cool running water to remove milk residue.
3. **Wash:** Wash parts in warm, soapy water using a dedicated brush for breast pump parts. Ensure all milk residue is removed.
4. **Rinse Thoroughly:** Rinse parts again under clean running water.
5. **Air Dry:** Place parts on a clean paper towel or drying rack and allow them to air dry completely. Do not use a cloth towel, as it may transfer germs.

Important: The MomMed S21 breast pump parts are **not dishwasher safe**. Hand washing is required. Do not immerse the motor unit in water or sterilize it.

Sterilization (Once Daily or as Needed):

Sterilize cleaned parts by boiling them in water for 5 minutes or using a steam sterilizer designed for baby products. Ensure parts are completely dry before reassembly or storage.

Storage:

Store clean and dry pump parts in a clean, dry place or a dedicated storage container. Keep the motor unit in a safe, dry environment.

TROUBLESHOOTING

If you encounter issues with your MomMed S21 breast pump, refer to the following common troubleshooting steps:

Problem	Possible Cause	Solution
No suction or weak suction	<ul style="list-style-type: none">• Improper assembly of parts.• Valve is damaged or not seated correctly.• Flange not sealed properly to the breast.• Motor unit battery is low.	<ul style="list-style-type: none">• Disassemble and reassemble all parts, ensuring a tight fit.• Check the valve for tears or debris; replace if necessary. Ensure it is seated flat.• Adjust the flange position to create a complete seal.• Charge the pump motor unit fully.
Pump not turning on	<ul style="list-style-type: none">• Battery is completely drained.• Power button not pressed long enough.	<ul style="list-style-type: none">• Connect to charger and allow it to charge for at least 30 minutes before attempting to turn on.• Press and hold the power button for 3-5 seconds.
Short battery life	<ul style="list-style-type: none">• Battery degradation over time.• Frequent use of higher suction levels.	<ul style="list-style-type: none">• Ensure the pump is fully charged before each session.• Consider charging between sessions if multiple long sessions are planned.• Battery life can vary based on usage patterns and age of the unit.
Milk leakage	<ul style="list-style-type: none">• Improper assembly of the collection cup or flange.• Pump not kept upright during use.• Overfilling the collection cup.	<ul style="list-style-type: none">• Verify all connections are secure and the anti-leak design components are properly aligned.• Maintain an upright posture while pumping.• Monitor milk volume and empty the collection cup before it reaches maximum capacity.



Less Noise



Image: Low Noise Operation. The pump operates at less than 45 dB, designed for discreet use without disturbing others.

SPECIFICATIONS

- **Model Number:** S21-01-Gray-White
- **Product Dimensions:** 5.51 x 7.08 x 6.29 inches
- **Item Weight:** 1.92 pounds
- **Power Source:** Corded Electric (for charging)
- **Pump Type:** Electric
- **Operation Mode:** Electric
- **Flange Diameter:** 17 Millimeters (standard, other sizes via inserts)
- **Special Features:** Painless, Portable, Hands-Free Usage, Low Noise
- **Dishwasher Safe:** No
- **Battery Required:** No (internal rechargeable battery)

WARRANTY AND SUPPORT

For specific warranty information regarding your MomMed Wearable Breast Pump S21, please refer to the documentation included with your purchase or contact MomMed customer support directly.

Additional support and resources, including a downloadable PDF user manual, may be available on the official MomMed website or through the retailer where the product was purchased.

Online Resources:

- Official MomMed Store: [Visit the MOMMED Store on Amazon](#)
- User Manual (PDF): [Download PDF User Manual](#)

© 2024 MOMMED. All rights reserved.

This manual is for informational purposes only. Always consult with a healthcare professional for medical advice.