

Sejoy X2

Sejoy Electric Shavers for Men User Manual

Model: X2 | Brand: Sejoy

INTRODUCTION

Thank you for choosing the Sejoy Electric Shaver. This manual provides detailed instructions for the safe and effective use, maintenance, and care of your new electric shaver. Please read this manual thoroughly before first use and keep it for future reference.

SAFETY INFORMATION

For your safety and to ensure proper operation, please observe the following precautions:

- Do not use the shaver while it is charging.
- Keep the shaver away from water when not in use, especially during charging.
- This appliance is not intended for use by children.
- Ensure the charging port is dry before connecting the USB cable.
- Do not disassemble or attempt to repair the shaver yourself. Contact qualified personnel for service.
- Avoid dropping the shaver or subjecting it to strong impacts.

WHAT'S IN THE BOX

Upon opening the package, please verify that all components are present and in good condition:

- Sejoy Electric Shaver (Model X2)
- USB Type-C Charging Cable
- Cleaning Brush
- Protective Cap
- User Manual



WHAT'S IN THE BOX

Image: The Sejoy Electric Shaver, its packaging, USB-C charging cable, cleaning brush, and protective cap, illustrating the complete contents of the product box.

PRODUCT FEATURES

- **80,000 Strong Power:** Equipped with an 8W high-power motor for fast and accurate shaving, operating at a low noise level of 67dB.
- **3D Independent Floating Head:** Features three sets of independently floating blade heads with 18x3 blades, adapting to facial contours for efficient shaving.
- **Extremely Thin Double-Ring Knife Mesh & Grinding Blade:** High precision steel (0.11 mm thickness) double-loop design increases contact area and shaving efficiency. Blades self-sharpen during operation.
- **Pop-up Trimmer:** Integrated pop-up trimmer on the back for easy trimming of longer beards and sideburns.
- **IPX7 Waterproof:** Fully washable design suitable for both wet and dry shaving, allowing use with foam or water.
- **Long Battery Life & USB Charging:** 1-hour full charge provides approximately 90 minutes of cordless use. Supports plug-and-play for immediate use even when battery is low.

8W SUPER STRONG POWER

No residue in shaving

|||| Noise $\leq 67\text{dB}$



Image: Detailed view of the shaver's 3D independent floating heads, designed to adapt to facial contours for a close shave.



Image: Diagram illustrating the powerful 8W motor and quiet operation (67dB) of the Sejoy Electric Shaver.

SETUP

Charging the Shaver

1. Ensure the shaver is turned off before charging.
2. Locate the USB Type-C charging port on the shaver.
3. Insert the small end of the provided USB Type-C cable into the shaver's charging port.
4. Connect the larger USB end of the cable to a USB power source, such as a computer, car charger, wall adapter, or power bank.
5. The charging indicator light will illuminate, typically red, during charging.
6. A full charge takes approximately 1 hour. The indicator light may change color (e.g., turn green or turn off) when fully charged.
7. Disconnect the shaver from the power source once charging is complete.



Image: The shaver being charged via its USB Type-C port, demonstrating its fast charging feature and compatibility with various USB power sources.

OPERATING INSTRUCTIONS

Basic Shaving

1. Ensure the shaver is fully charged for optimal performance.
2. Press the power button to turn on the shaver.
3. For dry shaving, hold the shaver at a right angle to your skin and move it in small, circular motions against the direction of hair growth.
4. For wet shaving, apply shaving foam or gel to your face before shaving. The shaver is IPX7 waterproof and can be used in the shower.
5. Apply gentle pressure; do not press too hard, as this can irritate the skin and reduce shaving efficiency.
6. After shaving, press the power button to turn off the shaver.

Using the Pop-up Trimmer

1. Locate the pop-up trimmer button on the back of the shaver.
2. Press the button to extend the trimmer.
3. Use the trimmer for precise shaping of sideburns, mustaches, or for pre-trimming longer beard hair before

main shaving.

4. After use, push the trimmer back into its housing until it clicks into place.



Image: The shaver with its pop-up trimmer extended, illustrating its functionality for precise grooming.

MAINTENANCE AND CLEANING

Regular cleaning ensures optimal performance and extends the lifespan of your shaver.

Daily Cleaning (After Each Use)

1. Turn off the shaver.
2. Open the shaver head by pressing the release button (if applicable) or gently twisting the head counter-clockwise.
3. Rinse the shaver head and the inner chamber under running tap water. The IPX7 waterproof design allows for easy rinsing.
4. Use the provided cleaning brush to remove any stubborn hair clippings from the blades and inner parts.
5. Allow the shaver head to air dry completely before closing it or reattaching the protective cap.

Deep Cleaning / Blade Replacement

For a more thorough cleaning or when replacing blades (recommended every 12-18 months, depending on usage):

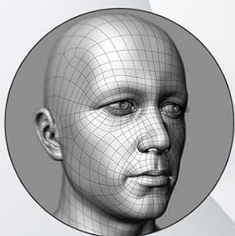
1. Turn off the shaver and open the shaver head.
2. Gently remove the individual blade units from the shaver head. Refer to the image below for guidance.
3. Clean each blade and foil thoroughly with the cleaning brush and rinse under water.
4. If replacing, insert new blade units, ensuring they click securely into place.
5. Reassemble the shaver head.



Image: The shaver being cleaned under running water, highlighting its full body waterproof design for easy maintenance.

3D INDEPENDENT FLOATING HEAD

Automatically adapts to your face and neck contours



4-Direction
Flex Heads



High Precision
Steel



Image: A visual guide demonstrating the process of opening the shaver head and removing the blades for cleaning or replacement.

TROUBLESHOOTING

Problem	Possible Cause	Solution
Shaver does not turn on.	Battery is depleted.	Charge the shaver for at least 1 hour.
Shaver pulls hair or shaves poorly.	Blades are dull or clogged with hair.	Clean the shaver head thoroughly. Consider replacing the blade units if performance does not improve.
Charging indicator not working.	Cable or power source issue.	Try a different USB cable or power adapter. Ensure the charging port is clean and dry.
Shaver makes unusual noise.	Hair caught in mechanism or damaged blades.	Clean the shaver head thoroughly. If noise persists, contact customer support.

SPECIFICATIONS

Model Name: X2

Brand: Sejoy

Power Source: Battery Powered

Special Feature: Waterproof (IPX7)

Charging Time: Approximately 1 hour

Runtime: Up to 90 minutes (cordless)

Motor Power: 8W

Noise Level: ≤ 67dB

Blade Type: 3D Independent Floating Head, Double-Ring Knife Mesh, Self-Sharpening

Dimensions: 7.36 x 3.54 x 3.11 inches

Weight: 9.88 ounces

UPC: 754708206973


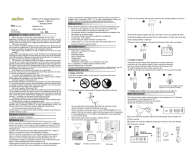
ASIN: B0BVY6CDDT

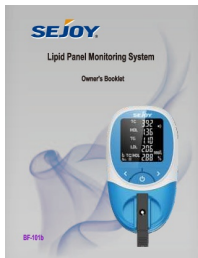
WARRANTY AND SUPPORT

Sejoy products are manufactured with high-quality standards. For information regarding warranty coverage, technical support, or replacement parts, please refer to the warranty card included with your product or visit the official Sejoy website. You may also contact the seller directly for assistance.

For customer service inquiries, please have your product model number (X2) and purchase date available.

Related Documents - X2

	<p>Master Pro Hair Clipper User Manual and Operating Guide Sejoy</p> <p>Detailed user manual for the Sejoy Master Pro hair clipper, covering setup, operation, maintenance, safety precautions, and troubleshooting for effective home grooming.</p>
	<p>Sejoy Covid Self-Test Kit Technical Specifications Metzcare</p> <p>Technical specifications for the Sejoy Covid Self-Test Kit (CVD-AUTO-1241) by Metzcare. Details include product features, rapid results, nasopharyngeal swab use, packaging, box contents, and distributor information.</p>
	<p>SEJOY SARS-CoV-2 Antigen Rapid Test Cassette (Saliva) - Package Insert</p> <p>Package insert for the SEJOY SARS-CoV-2 Antigen Rapid Test Cassette (Saliva), providing instructions for use, precautions, interpretation of results, and performance characteristics for rapid self-testing of COVID-19.</p>



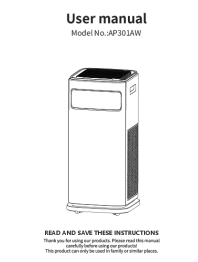
[SEJOY BF-101b Lipid Panel Monitoring System Owner's Booklet](#)

This owner's booklet provides comprehensive instructions for the SEJOY BF-101b Lipid Panel Monitoring System, covering setup, operation, testing procedures, maintenance, and troubleshooting for accurate lipid panel measurements.



[Sejoy BP-1326 Arm-Type Digital Blood Pressure Monitor Owner's Manual](#)

This owner's manual provides comprehensive instructions for the Sejoy BP-1326 arm-type fully automatic digital blood pressure monitor. Learn about setup, operation, testing, memory functions, troubleshooting, and maintenance for accurate home health monitoring.



[SEJOY AP301AW Air Purifier User Manual](#)

User manual for the SEJOY AP301AW Air Purifier, covering safety precautions, product introduction, control panel, operation, filter installation, maintenance, troubleshooting, warranty, and app setup.