

Manuals+

[Q & A](#) | [Deep Search](#) | [Upload](#)

Manuals.plus /

- › [LG /](#)
- › LG Eclair SE6S Sound Bar User Manual

LG SE6S

LG Eclair SE6S Sound Bar User Manual

Model: SE6S

1. INTRODUCTION

The LG Eclair SE6S is a 3.0 channel all-in-one sound bar designed to deliver powerful and immersive audio without the need for an external subwoofer. Featuring Dolby Atmos and DTS:X support, it provides a rich, spatial sound experience. Its compact design and premium fabric finish allow it to seamlessly integrate into any living space. This manual provides essential information for setting up, operating, maintaining, and troubleshooting your LG Eclair SE6S Sound Bar.



Figure 1.1: Front view of the LG Eclair SE6S Sound Bar.

2. SAFETY INFORMATION

Please read all safety instructions carefully before using the product. Keep this manual for future reference.

- Do not expose the sound bar to water or moisture.
- Ensure proper ventilation around the unit to prevent overheating.
- Use only the power adapter supplied with the device.
- Do not block any ventilation openings.
- Avoid placing the sound bar near heat sources such as radiators, heat registers, stoves, or other apparatus (including amplifiers) that produce heat.
- Clean only with a dry cloth.

3. PACKAGE CONTENTS

Verify that all items are present in the box:

- LG Eclair SE6S Sound Bar
- Remote Control
- Power Cable

- User Manual (this document)
- AAA Batteries (2) for Remote Control

4. SETUP

4.1 Physical Placement

Place the sound bar centrally below your television. Ensure there is clear space around the unit for optimal sound dispersion and ventilation. The compact design allows for versatile placement on a TV stand or wall-mounted below the TV.

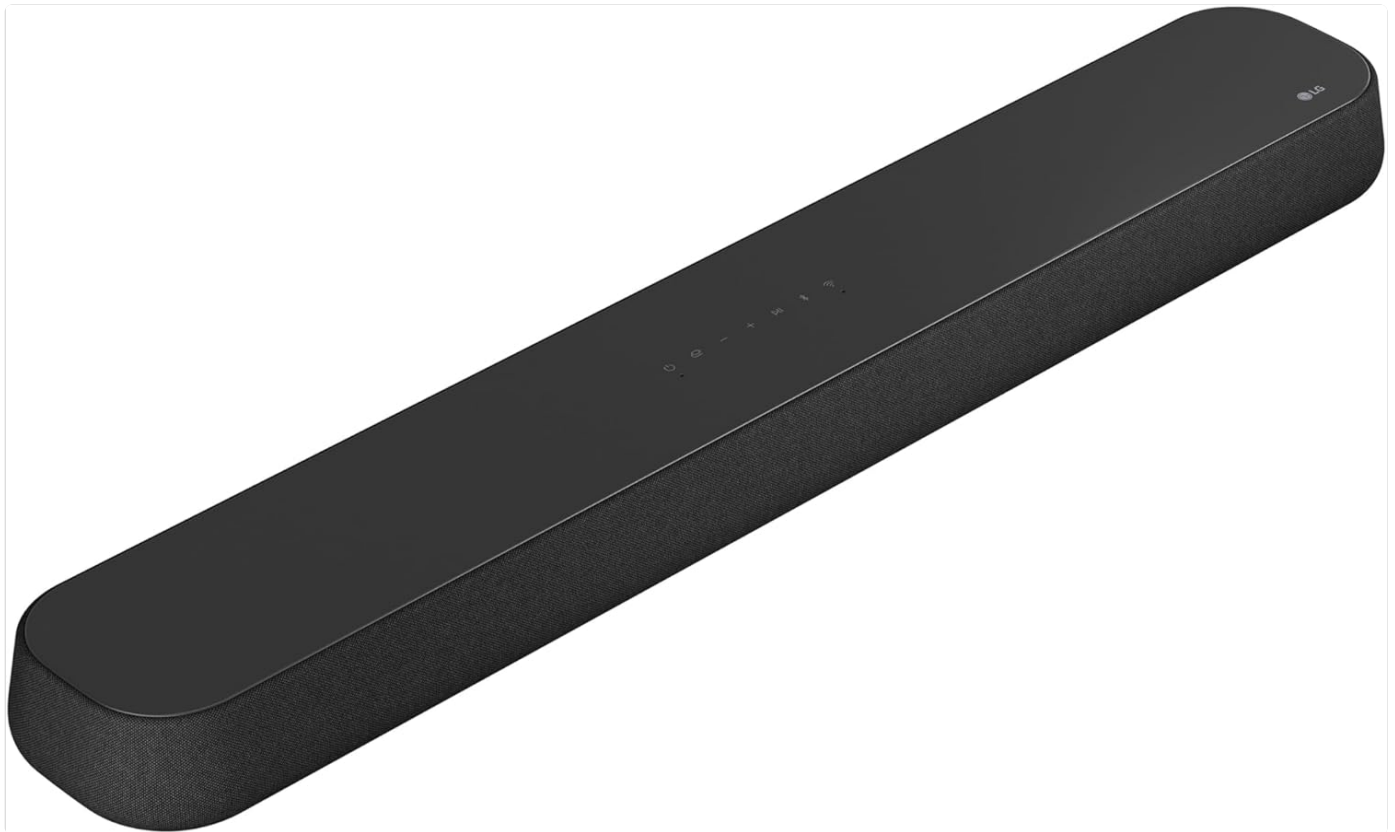


Figure 4.1: Side view of the LG Eclair SE6S Sound Bar, showing its compact profile.

4.2 Connections

Connect the sound bar to your television and other devices using the following methods:

- **HDMI ARC (Recommended):** For the best audio quality and control, connect an HDMI cable from the HDMI ARC port on your TV to the HDMI OUT (TV ARC) port on the sound bar. This allows your TV remote to control the sound bar's volume.
- **Optical:** If your TV does not have an HDMI ARC port, connect an optical cable from your TV's optical digital audio output to the OPTICAL IN port on the sound bar.
- **Bluetooth:** For wireless audio streaming from mobile devices, enable Bluetooth on your device and pair it with the LG SE6S.
- **Wi-Fi:** Connect the sound bar to your home Wi-Fi network for access to streaming services and smart features. Use the LG Sound Bar app for initial setup.

Feel Resonant Bass with 4 Passive Radiators



Figure 4.2: Rear view of the LG Eclair SE6S Sound Bar, illustrating available connection ports.

5. OPERATION

5.1 Basic Controls

Use the included remote control or the buttons on top of the sound bar to manage basic functions:

- **Power:** Turn the sound bar on or off.
- **Volume:** Adjust the master volume level.
- **Function/Input:** Switch between input sources (HDMI, Optical, Bluetooth, Wi-Fi).

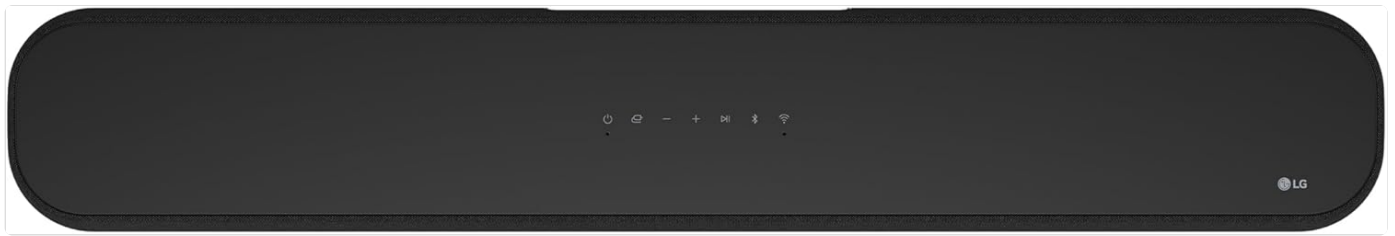


Figure 5.1: Top view of the LG Eclair SE6S Sound Bar, showing integrated control buttons.

5.2 Sound Features

- **Dolby Atmos & DTS:X:** Experience immersive, multi-dimensional sound that moves around you. The sound bar is engineered to deliver realistic spatial audio.



Figure 5.2: Visual representation of Dolby Atmos and DTS:X immersive sound.

- **Quad Passive Radiators:** Enjoy deep and impressive bass without an external subwoofer, thanks to the four integrated passive radiators.

Play music, radio and podcasts, from all your services over WiFi



T I D A L connect



*Official MQA recording required.

Figure 5.3: Internal view highlighting the Quad Passive Radiators for enhanced bass.

- **Smart Up-Mixer:** Convert 2-channel audio into a multi-channel experience, creating a wider soundstage and richer immersion.

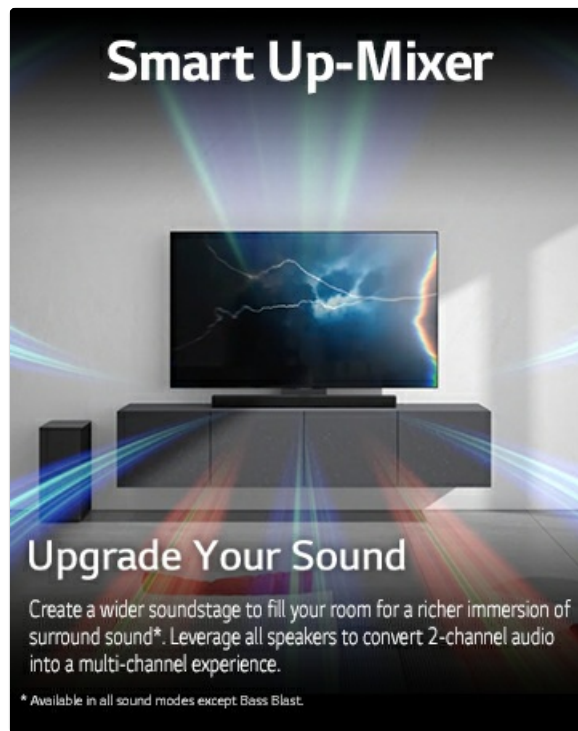


Figure 5.4: The Smart Up-Mixer feature for expanded sound.

- **WOW Orchestra:** When paired with a compatible LG TV, this feature allows the sound bar and TV speakers to work together, creating a harmonious and balanced sound experience.

Dolby Atmos and DTS:X Surrounds You in Sound



 Dolby Atmos

 dts x

*Dolby and Dolby Vision are registered trademarks of Dolby Laboratories Licensing Corporation.
**The double-D symbol is a trademark of Dolby Laboratories Licensing Corporation.

Figure 5.5: WOW Orchestra in action, combining TV and sound bar audio.

- **WOW Interface:** Control your sound bar settings directly from your LG TV remote, including volume, audio settings, and sound modes.



Figure 5.6: WOW Interface for integrated control via LG TV remote.

5.3 Music Streaming & Gaming

- **Wi-Fi Music Playback:** Stream music, radio, and podcasts from various services over Wi-Fi for high-quality audio.



Figure 5.7: Wi-Fi connectivity for music streaming services.

- **VRR/ALLM:** Enjoy a smooth and lag-free gaming experience with a passthrough refresh rate up to 120Hz, ensuring sound keeps pace with the visuals.



Figure 5.8: VRR/ALLM support for enhanced gaming audio.

6. MAINTENANCE

Proper care will ensure the longevity and performance of your sound bar.

- **Cleaning:** Use a soft, dry cloth to clean the exterior of the sound bar. Do not use liquid cleaners or aerosol sprays.
- **Fabric Care:** The premium fabric covering should be gently dusted. Avoid harsh chemicals or abrasive materials that could damage the fabric.
- **Ventilation:** Ensure that the ventilation openings are not blocked by dust or debris.

7. TROUBLESHOOTING

If you encounter issues with your LG Eclair SE6S Sound Bar, refer to the following common problems and solutions:

Problem	Possible Cause / Solution
No sound from the sound bar.	<ul style="list-style-type: none">◦ Ensure the sound bar is powered on and the correct input source is selected.◦ Check all cable connections (HDMI, Optical) are secure.◦ Verify the TV's audio output is set to the sound bar (e.g., External Speaker, HDMI ARC).◦ Increase the volume on both the sound bar and the TV.

Problem	Possible Cause / Solution
Intermittent sound or "CONNECTED" voice prompt.	<ul style="list-style-type: none"> ◦ This can occur with ARC connections. Try unplugging and re-plugging the HDMI cable. ◦ Ensure the sound bar's firmware is up to date. ◦ Perform a factory reset if the issue persists (refer to the full online manual for specific steps).
Bass is not strong enough.	<ul style="list-style-type: none"> ◦ While the SE6S features Quad Passive Radiators for enhanced bass, it is an all-in-one unit without a dedicated subwoofer. ◦ Adjust bass levels through the sound bar's settings or the LG Sound Bar app. ◦ Ensure the sound mode is appropriate for content (e.g., Cinema mode for movies).
Bluetooth pairing issues.	<ul style="list-style-type: none"> ◦ Ensure the sound bar is in Bluetooth pairing mode. ◦ Move your Bluetooth device closer to the sound bar. ◦ Remove the sound bar from your device's paired list and try pairing again.

8. SPECIFICATIONS

Feature	Detail
Model Name	SE6S
Speaker Type	Soundbar
Channels	3.0 ch
Surround Sound	Dolby Atmos, DTS:X
Connectivity	Wired (HDMI ARC, Optical), Wireless (Bluetooth, Wi-Fi)
Product Dimensions (DxWxH)	5.2"D x 31.5"W x 2.5"H
Item Weight	7.7 Pounds
Control Method	Remote Control
Power Source	Corded Electric
UPC	195174049303

9. WARRANTY AND SUPPORT

Your LG Eclair SE6S Sound Bar comes with a full manufacturer's warranty. For detailed warranty information, please refer to the warranty card included in your product packaging or visit the official LG website.

For technical support, troubleshooting assistance beyond this manual, or service requests, please contact LG Customer Service:

- **Online Support:** Visit [LG's official support website](#)
- **Phone Support:** Refer to your product documentation for regional contact numbers.

Please have your model number (SE6S) and serial number ready when contacting support.

© 2024 LG Electronics. All rights reserved.
This manual is subject to change without notice.