

421944088751 421945040601

Drip Tray Floater Instruction Manual

Compatible with Philips Coffee Machines

1. PRODUCT OVERVIEW

This document provides instructions for the Generic Drip Tray Floater, a replacement part designed for various Philips coffee machine models. This floater indicates when the drip tray needs to be emptied by rising as the tray fills with liquid.



Figure 1: The Drip Tray Floater. This red plastic component is designed to float in the drip tray of compatible Philips coffee machines, signaling when the tray is full and requires emptying.

Please note that this part is supplied as a spare part and does not include commercial packaging or a retail box. You will receive the part exactly as shown in the product images.

2. COMPATIBILITY

This Drip Tray Floater is compatible with a wide range of Philips coffee machine models. Please verify your

machine's model number against the lists below:

EP Series Models:

- EP0810, EP0820, EP0824
- EP1000, EP1200, EP1220, EP1221, EP1222, EP1223, EP1224
- EP2020, EP2021, EP2030, EP2035
- EP2121, EP2124, EP2131, EP2136
- EP2220, EP2221, EP2223, EP2224, EP2230, EP2231, EP2232, EP2235, EP2236
- EP2330, EP2331, EP2333, EP2334, EP2336, EP2339
- EP2520
- EP3146, EP3221, EP3226, EP3241, EP3242, EP3243, EP3246, EP3249
- EP3321, EP3323, EP3324, EP3326, EP3329, EP3341, EP3343, EP3347, EP3349
- EP3546
- EP4321, EP4324, EP4327, EP4341, EP4343, EP4346, EP4347, EP4349
- EP5143, EP5144, EP5147, EP5441, EP5443, EP5444, EP5446, EP5447

SM Series Models:

- SM6480, SM6580, SM6582, SM6585
- SM6680, SM6682, SM6685
- SM8780, SM8782, SM8785, SM8885, SM8889

This part is also known by part numbers: **421944088751**, **421945040601**, **421945023641**.

3. INSTALLATION GUIDE

The Drip Tray Floater is designed for easy replacement. Follow these steps to install or replace the floater in your Philips coffee machine's drip tray:

1. **Locate the Drip Tray:** Ensure your coffee machine is turned off and unplugged. Carefully remove the drip tray from the front of your Philips coffee machine.
2. **Identify Floater Location:** Inside the drip tray, you will find a designated slot or hole where the floater is inserted. If an old floater is present, gently pull it out.
3. **Insert New Floater:** Take the new Drip Tray Floater. Align the base of the floater with the slot in the drip tray. The longer, flat part of the floater should rest within the tray, and the small, cylindrical pin should point upwards.
4. **Secure the Floater:** Gently push the floater into place until it sits securely. It should be able to move freely up and down within its slot as the tray fills or empties.
5. **Reinsert Drip Tray:** Once the floater is installed, slide the drip tray back into your coffee machine until it clicks into place.

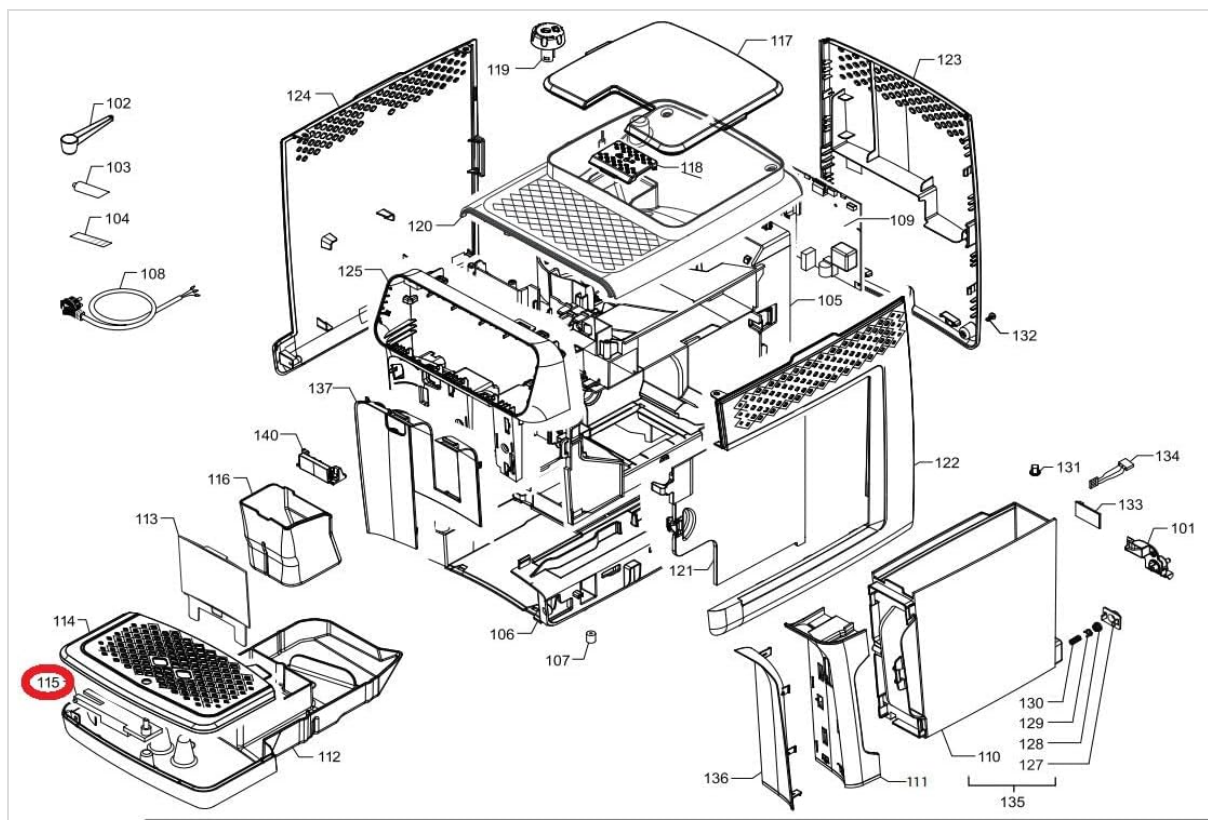


Figure 2: Exploded view of a Philips coffee machine, highlighting the drip tray assembly. The floater (item 115, circled in red) is located within the drip tray (item 112), demonstrating its position for proper installation.

For visual reference, refer to Figure 2, which shows an exploded diagram of a compatible coffee machine with the drip tray and floater location highlighted.

4. MAINTENANCE

To ensure optimal performance and hygiene, regularly clean your Drip Tray Floater:

- **Daily Cleaning:** When emptying the drip tray, rinse the floater under warm running water to remove any coffee residue or debris.
- **Deep Cleaning:** Periodically, use a mild dish soap and a soft brush to thoroughly clean the floater and its slot in the drip tray. Ensure all soap residue is rinsed off.
- **Drying:** Allow the floater to air dry completely before reinserting it into the drip tray.

5. TROUBLESHOOTING

If you encounter issues with your Drip Tray Floater, consider the following:

- **Floater Not Rising:**
 - Ensure the floater is clean and free of sticky residue that might prevent it from moving freely.
 - Check if there is any obstruction in the floater's slot within the drip tray.
- **Floater Does Not Fit:**
 - Verify that your Philips coffee machine model is listed in the "Compatibility" section (Section 2).
 - Ensure the floater is oriented correctly before attempting to insert it.

6. SPECIFICATIONS

Brand	Generic
Model Numbers (Known As)	421944088751, 421945040601, 421945023641
Item Weight	10 g
Approx. Parcel Dimensions	12 x 9 x 3.5 cm

7. WARRANTY AND SUPPORT

As a replacement part, specific warranty details may vary. Please refer to the original purchase platform or contact the seller directly for any warranty inquiries or support needs regarding this Drip Tray Floater. For general inquiries about your Philips coffee machine, please consult your machine's original user manual or the Philips official support website.

© 2024 Generic. All rights reserved. Philips is a registered trademark of Koninklijke Philips N.V.

Documents - 421944088751 421945040601 – 421944088751 421945040601
no relevant documents