

[Manuals.plus](#) /

› [Juskys Gruppe GmbH](#) /

› Juskys Awning with Articulated Arm 300 x 250 cm User Manual

Juskys Gruppe GmbH 300495

Juskys Awning with Articulated Arm User Manual

Model: 300495

INTRODUCTION

This manual provides detailed instructions for the safe and efficient use, installation, and maintenance of your Juskys Awning with Articulated Arm. Please read this manual thoroughly before assembly and operation to ensure proper function and longevity of the product. Keep this manual for future reference.

SAFETY INFORMATION

Important: Always follow manufacturer's instructions for installation and securely fasten the awning to prevent accidents or damage from wind or other external factors.

- Ensure all components are present and undamaged before assembly.
- Do not operate the awning in strong winds, heavy rain, or snow. Retract the awning completely during adverse weather conditions.
- Regularly inspect the awning for any signs of wear, damage, or loose fasteners.
- Keep children and pets away from the awning during operation.
- Use appropriate tools and safety gear during installation.
- If unsure about any step, consult a qualified professional.

PRODUCT OVERVIEW

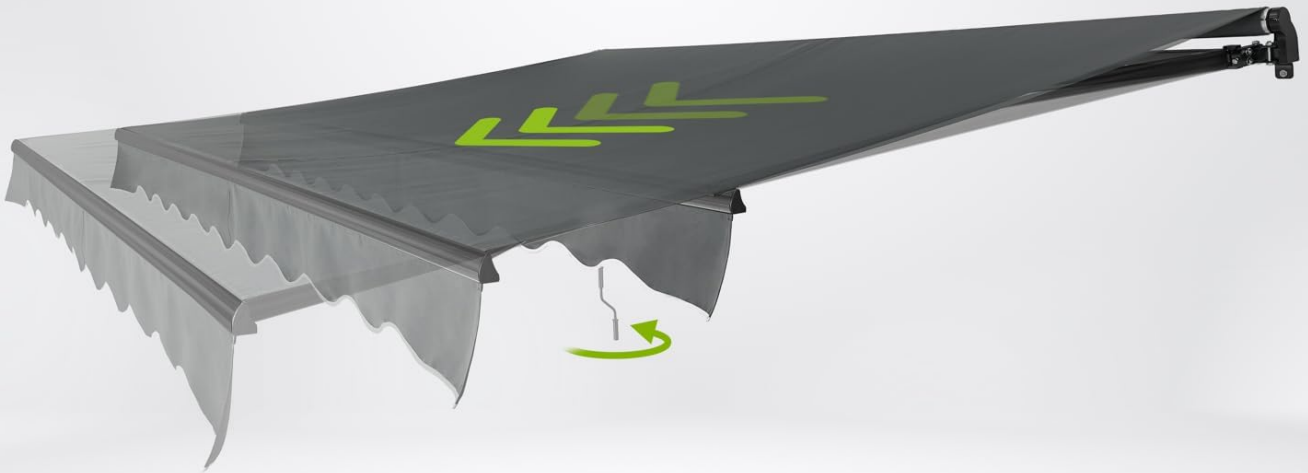
The Juskys Awning is designed to provide reliable sun protection and shade for your patio or balcony. It features a robust aluminum frame and a durable, UV-resistant, and water-repellent polyester fabric.



Figure 1: Main components of the Jusky's Awning, showing the awning fabric, articulated arms, wall mounting brackets, and the manual crank handle.

STUFENLOS

NEIGUNGSWINKEL 0-48°




**STABILITÄT
AUF JEDER
LÄNGE**

**MARKISE AUSFAHREN
IM HANDUMDREHEN**

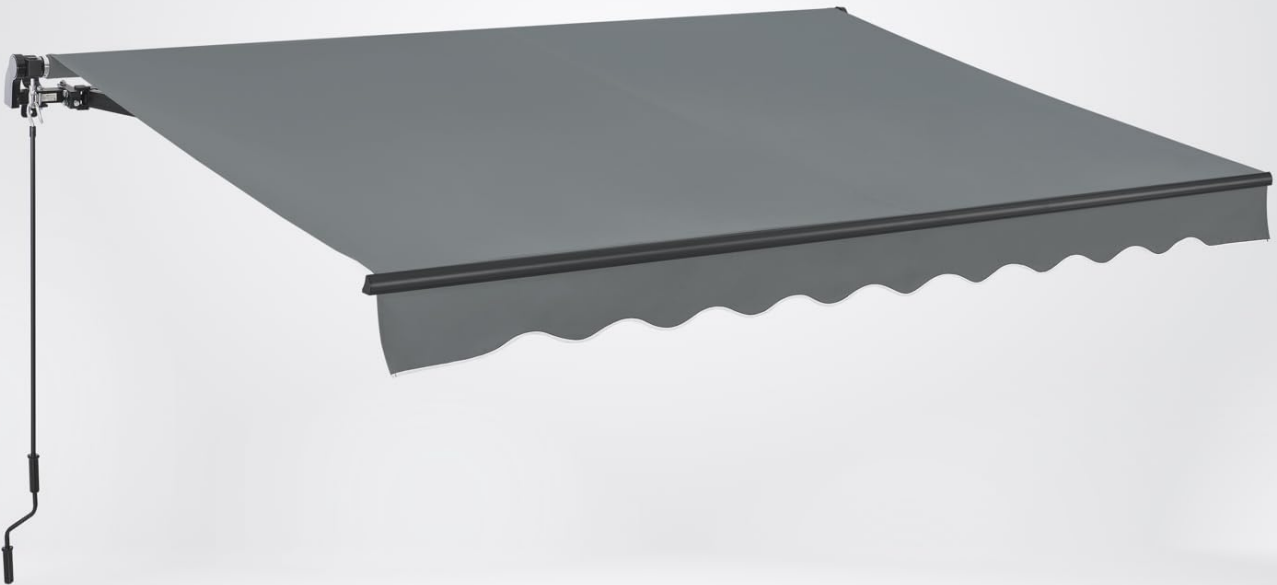


Figure 2: The awning's adjustable tilt angle, ranging from 0 to 51 degrees, allowing for flexible shade positioning.

GELENKARM MARKISE

300 X 250 CM

SONNENDACH AUS STARKEM
280 G/M² POLYESTER



LIEFERUNG MIT PASSENDEM
MONTAGEMATERIAL



Figure 3: Detailed view of the manual hand crank, highlighting its ergonomic design for easy operation.

SETUP AND INSTALLATION

Installation requires at least two people and approximately two hours. Ensure you have all necessary tools, including a powerful electric drill, a stepladder, and patience. Do not lose any screws provided.

1. Unpacking and Component Check

1. Carefully unpack all components from the packaging.
2. Verify that all parts listed in the packing list are present and undamaged. Refer to Figure 1 for a visual guide of components.

2. Wall Mounting

The awning must be securely mounted to a sturdy wall. The appropriate mounting brackets are included.



Figure 4: Included mounting brackets and expansion bolts for secure wall attachment.

1. Choose a suitable location on a solid wall, ensuring sufficient clearance for the awning's full extension (up to 2.5 meters).
2. Mark the drilling points for the wall brackets according to the awning's dimensions. Use a level to ensure horizontal alignment.
3. Drill holes using an appropriate drill bit for your wall material.
4. Insert the expansion bolts into the drilled holes.
5. Attach the mounting brackets to the wall using the provided fasteners, ensuring they are tightened securely.

3. Attaching the Awning

1. With the help of a second person, carefully lift the awning and align its frame with the mounted brackets.
2. Secure the awning to the brackets using the designated bolts and nuts. Ensure all connections are firm and stable.
3. Double-check that the awning is level and securely fastened to the wall.

OPERATING INSTRUCTIONS

The Juskys Awning is operated manually using the provided hand crank.

Extending and Retracting the Awning

1. Insert the hand crank into the designated hook on the articulated arm mechanism (refer to Figure 3).
2. To extend the awning: Turn the hand crank clockwise until the awning reaches the desired extension, up to 2.5 meters.
3. To retract the awning: Turn the hand crank counter-clockwise until the awning is fully retracted against the wall.

Adjusting the Tilt Angle

The tilt angle of the awning can be continuously adjusted from 0 to 51 degrees to optimize shade throughout the day.

1. Locate the angle adjustment mechanism on the articulated arms.
2. Loosen the locking mechanism (if present, specific method may vary, refer to detailed diagrams if available).
3. Adjust the angle to your preference.
4. Tighten the locking mechanism to secure the awning at the desired angle.



JUSKYS

STABIL & SICHER

BESTÄNDIGE KONSTRUKTION

ALUMINIUM GESTELL
PULVERBESCHICHTET & KORROSIONSSCHUTZ

Figure 5: The awning fully extended, providing ample shade for an outdoor area.

MAINTENANCE AND CARE

Proper maintenance ensures the longevity and optimal performance of your JusKys Awning.

- **Cleaning the Fabric:** The awning fabric is made of durable 280 g/m² polyester with a polyurethane coating, making it UV-resistant and water-repellent. Clean the fabric with mild soap and water. Do not use harsh chemicals or

abrasive cleaners. Allow the fabric to dry completely before retracting to prevent mildew.

- **Frame Maintenance:** The robust aluminum frame has a powder coating for corrosion protection. Periodically wipe down the frame with a damp cloth to remove dirt and debris.
- **Winter Protection:** To maximize the lifespan of your awning, especially in regions with harsh winters, it is recommended to fully retract the awning and protect it during the colder months.
- **Regular Inspection:** Regularly check all bolts, screws, and moving parts for tightness and signs of wear. Tighten any loose fasteners.

The advertisement features a dark grey awning with a white scalloped edge against a light grey background. In the top right corner, the JUSKYS logo is displayed in a white rounded rectangle with a green 'J' icon. Below the logo, the text 'ZUVERLÄSSIGER SCHUTZ' is written in green and dark blue. At the bottom, three circular icons with green borders are arranged horizontally. The first icon shows a shield with 'UV' and a sun, labeled 'UV40+ SONNENSCHUTZ'. The second icon shows a checkmark, labeled 'SPENDET GROßZÜGIGEN SCHATTEN'. The third icon shows a cloud with raindrops, labeled 'SCHÜTZT VOR REGEN'. The bottom of the image has a green wavy border.

JUSKYS

**ZUVERLÄSSIGER
SCHUTZ**

**UV40+
SONNEN-
SCHUTZ**

**SPENDET
GROßZÜGIGEN
SCHATTEN**

**SCHÜTZT
VOR REGEN**

Figure 6: The awning fabric demonstrating its water-repellent and UV-protective properties.

WETTERFEST

BESCHICHTETES POLYESTER

280 G/M² POLYESTER
POLYURETHAN BESCHICHTET

WITTERUNGSBESTÄNDIG
UV- UND WASSERABWEISEND

SCHNELLTROCKNEND
& ATMUNGSAKTIV



GANZJÄHRIG NUTZBAR

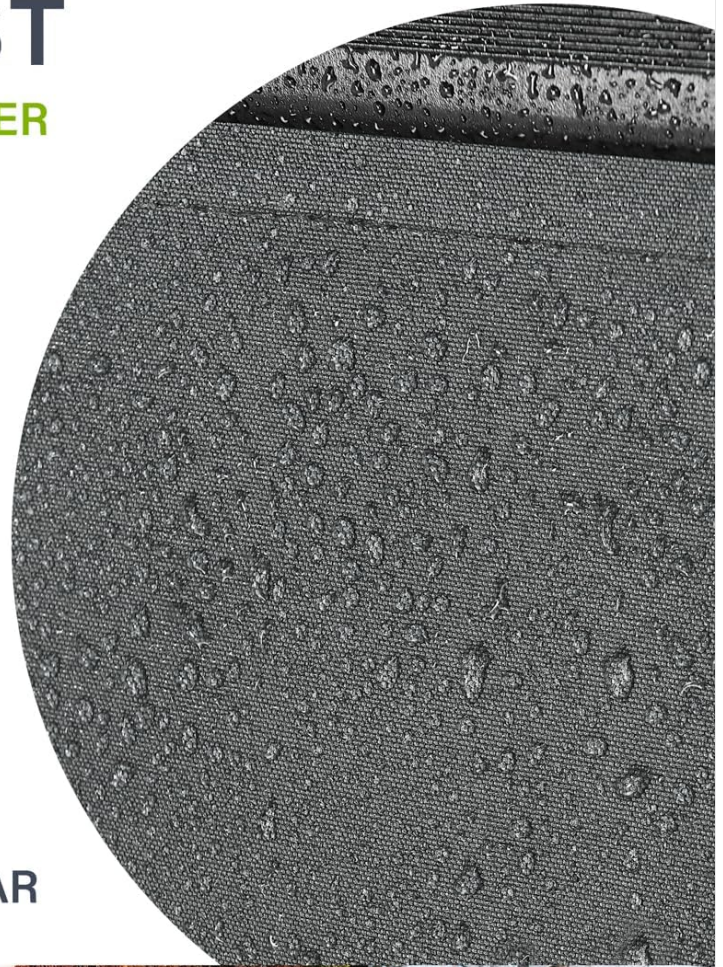


Figure 7: Detail of the durable aluminum frame, highlighting its powder-coated finish for enhanced corrosion resistance.

TROUBLESHOOTING

Problem	Possible Cause	Solution
Awning does not extend/retract smoothly.	Mechanism is dirty or obstructed.	Clean the articulated arms and moving parts. Check for any obstructions.
Awning sags or is uneven.	Mounting brackets are loose or unevenly installed.	Check and tighten all mounting bolts. Ensure the awning is level during installation.
Fabric shows signs of wear or damage.	Exposure to extreme weather; prolonged use without protection.	Ensure awning is retracted during strong winds or heavy precipitation. Consider replacing the fabric if damage is significant.

Problem	Possible Cause	Solution
Crank handle is difficult to turn.	Mechanism requires lubrication or is obstructed.	Apply a silicone-based lubricant to moving parts. Check for debris.

SPECIFICATIONS

- **Model Number:** 300495
- **Dimensions (W x L):** 300 x 250 cm (width x length)
- **Product Dimensions (L x W x H):** 300 x 250 x 140 cm; 19 kg
- **Material:** 280 g/m² Polyester with Polyurethane coating
- **Frame Material:** Powder-coated Aluminum
- **Color:** Grey
- **UV Protection:** UV40+
- **Water Resistance:** Water-repellent
- **Operation:** Manual (hand crank)
- **Tilt Angle:** Continuously adjustable 0-51°
- **Manufacturer:** Juskys Gruppe GmbH
- **Country of Origin:** China

WARRANTY INFORMATION

This product comes with a standard manufacturer's warranty. For details regarding warranty coverage, terms, and conditions, please refer to the documentation provided at the time of purchase or contact Juskys customer support. Keep your proof of purchase for warranty claims.

CUSTOMER SUPPORT

For any questions, technical assistance, or issues not covered in this manual, please contact Juskys customer support. Contact information can typically be found on the product packaging or the manufacturer's official website.

Seller: Hosel

For direct support, you may visit the seller's help page: [Hosel Seller Information](#)