

Manuals+

[Q & A](#) | [Deep Search](#) | [Upload](#)

manuals.plus /

> [Juskys](#) /

> [Juskys Articulated Arm Awning User Manual - Model 300494](#)

Juskys 300494

Juskys Articulated Arm Awning User Manual

Model: 300494

1. INTRODUCTION

This manual provides essential information for the safe and effective installation, operation, and maintenance of your Juskys Articulated Arm Awning. Please read these instructions carefully before assembly and use to ensure proper function and longevity of the product. Keep this manual for future reference.

2. SAFETY INSTRUCTIONS

Your safety is paramount. Adhere to all safety warnings and precautions.

- **Professional Installation:** If you are unsure about any part of the installation process, it is highly recommended to seek assistance from a qualified professional. Incorrect installation can lead to product failure and injury.
- **Spring Arms:** The articulated arms contain strong springs. Exercise extreme caution during assembly and disassembly to avoid sudden release and potential injury. Never attempt to tamper with or disassemble the spring mechanism without proper knowledge and tools.
- **Weather Conditions:** Retract the awning immediately during strong winds, heavy rain, snow, or hail. The awning is designed for sun protection and light rain, not severe weather conditions. Failure to retract can result in damage to the awning or property.
- **Weight Limit:** Do not hang objects from the awning frame or fabric. The awning is not designed to support additional weight.
- **Clearance:** Ensure sufficient clearance around the awning during extension and retraction to prevent obstruction or damage.
- **Children and Pets:** Keep children and pets away from the awning during operation to prevent accidents.
- **Maintenance:** Regularly inspect all components for wear, damage, or loose fasteners. Address any issues promptly.

3. PRODUCT OVERVIEW

The Juskys Articulated Arm Awning provides reliable sun protection and adds a stylish element to your outdoor space. It features a robust construction and user-friendly operation.

Reliable UV40+ Protection: The awning fabric offers excellent protection against harmful UV rays, creating a safe shaded area.

Water-Repellent Fabric: Made from durable 280 g/m² polyester with a polyurethane coating, the fabric is water-repellent, providing shelter from light rain.

Adjustable Angle: The awning's inclination can be continuously adjusted from 0 to 48 degrees, allowing you to optimize shade throughout the day.

Robust Aluminum Frame: The sturdy aluminum frame ensures high stability and is powder-coated for corrosion protection, enhancing durability.

Manual Crank Operation: Easily extend and retract the awning using the long manual crank, which features a rotatable handle for comfortable use.



Figure 3.1: Overview of the Juskys Articulated Arm Awning, showing the main unit, manual crank, and wall mounting brackets.

ZUVERLÄSSIGER SCHUTZ



Figure 3.2: Visual representation of the awning's UV40+ sun protection, generous shade provision, and rain protection capabilities.

4. COMPONENTS LIST

Before beginning assembly, ensure all parts are present and undamaged. Refer to the packing list for verification.

- Awning Fabric (pre-assembled with roller)
- Main Frame Assembly
- Articulated Arms (pre-assembled)
- Manual Crank
- Wall Mounting Brackets (quantity as per model)
- Mounting Material (screws, anchors, bolts)
- End Caps and Decorative Elements

5. SETUP AND INSTALLATION

Installation requires careful attention and is best performed by two people. Ensure you have the necessary tools (e.g., drill, level, measuring tape, wrenches).

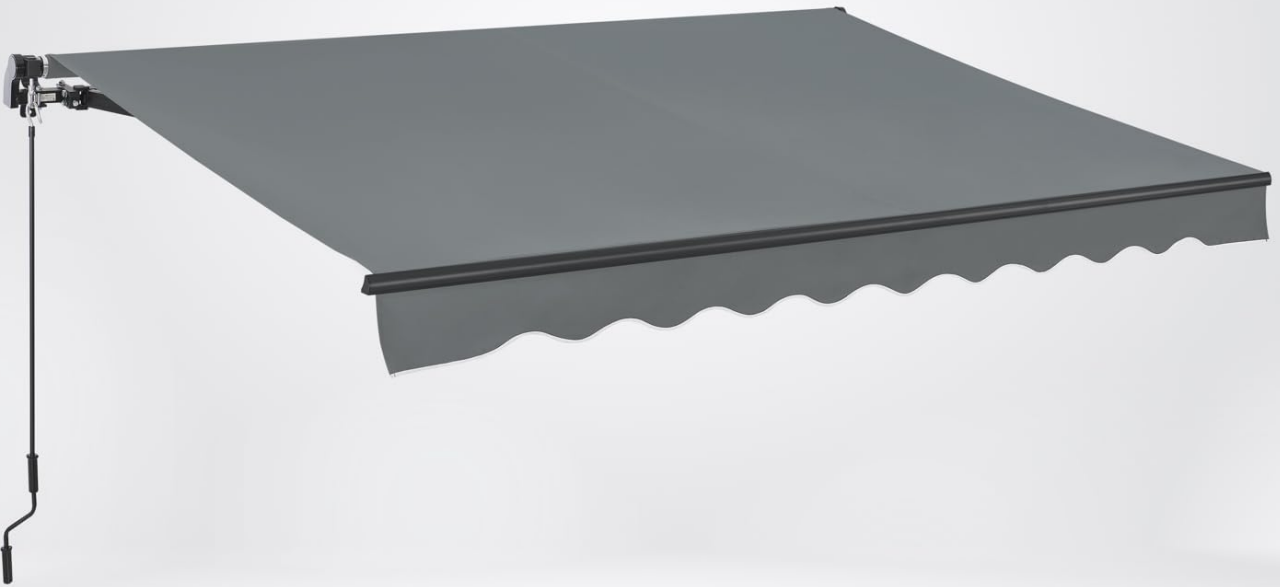
1. **Choose Location:** Select a suitable wall for mounting, ensuring it is structurally sound and can support the weight of the awning. Consider sun exposure and desired shade area.
2. **Mark Drilling Points:** Using a level and measuring tape, accurately mark the drilling points for the wall mounting brackets. Ensure the points are level and correctly spaced according to the frame dimensions.
3. **Drill Holes:** Drill holes at the marked points. Use an appropriate drill bit size for the provided anchors (e.g., 8mm or 14mm, verify with actual anchors). Clean out any dust from the drilled holes.
4. **Install Brackets:** Insert the anchors into the drilled holes and securely fasten the wall mounting brackets using the provided screws and bolts. Ensure they are firmly attached to the wall.
5. **Mount Awning Frame:** With the help of a second person, carefully lift the awning frame and attach it to the installed wall brackets. Secure it firmly using the designated fasteners.
6. **Connect Crank:** Attach the manual crank to its designated connection point on the awning mechanism.
7. **Test Operation:** Slowly extend and retract the awning a few times to ensure smooth operation and proper alignment. Adjust the angle as needed.



GELENKARM
MARKISE

250 X 200 CM

SONNENDACH AUS STARKEM
280 G/M² POLYESTER



**LIEFERUNG MIT PASSENDEM
MONTAGEMATERIAL**



Figure 5.1: The Juskys awning shown with the necessary mounting hardware, including wall brackets and fasteners, ready for installation.

STABIL & SICHER

BESTÄNDIGE
KONSTRUKTION



ALUMINIUM GESTELL

PULVERBESCHICHTET & KORROSIONSSCHUTZ

Figure 5.2: A close-up view of the awning's robust aluminum frame and secure connection points, highlighting its stable and durable construction.

6. OPERATING INSTRUCTIONS

Operating your Juskys awning is straightforward using the manual crank.

- **Extending the Awning:** Insert the hook of the manual crank into the loop on the awning mechanism. Turn the crank clockwise to extend the awning to your desired length.
- **Retracting the Awning:** To retract the awning, turn the crank counter-clockwise until the fabric is fully rolled up and the arms are closed.
- **Adjusting the Angle:** The awning's inclination can be adjusted between 0 and 48 degrees. This adjustment is typically done via bolts on the articulated arms or mounting brackets. Loosen the bolts slightly, adjust the angle, and then securely tighten the bolts. Refer to the specific adjustment points on your model.

HANDKURBEL

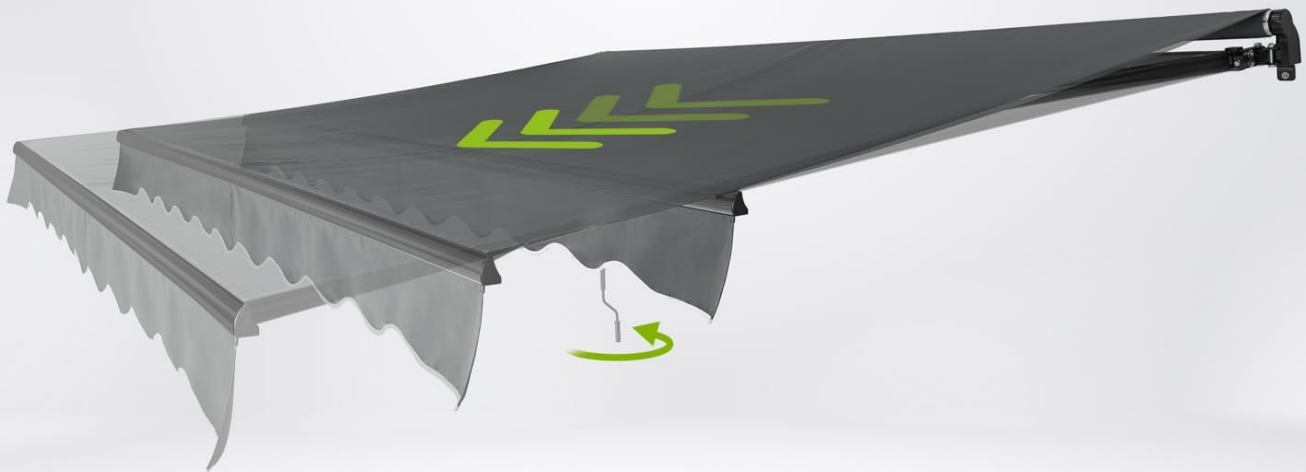
MIT DREHBAREM GRIFF



Figure 6.1: Detail of the manual crank, showing its rotatable handle and robust steel torsion bar for easy and comfortable operation.

STUFENLOS

NEIGUNGSWINKEL 0-48°



**STABILITÄT
AUF JEDER
LÄNGE**

**MARKISE AUSFAHREN
IM HANDUMDREHEN**



Figure 6.2: Illustration demonstrating the continuous angle adjustment feature of the awning, allowing for optimal shade positioning.

7. MAINTENANCE

Regular maintenance will extend the life of your awning and ensure its continued performance.

- **Cleaning the Fabric:** Clean the awning fabric periodically with mild soap and lukewarm water. Use a soft brush or sponge. Rinse thoroughly with clean water and allow it to air dry completely before retracting. Do not use harsh chemicals or abrasive cleaners.
- **Frame Inspection:** Annually inspect the aluminum frame, articulated arms, and mounting brackets for any signs of corrosion, damage, or loose fasteners. Tighten any loose bolts or screws.
- **Lubrication:** Apply a silicone-based lubricant to moving parts of the articulated arms and crank mechanism once a year to ensure smooth operation.
- **Winter Storage:** For prolonged periods of non-use, especially during winter months or severe weather forecasts, fully retract the awning. If possible, cover the retracted awning with a protective cover to shield it from harsh

elements.

8. TROUBLESHOOTING

Problem	Possible Cause	Solution
Awning does not extend/retract smoothly.	Mechanism is dry or obstructed; crank is not properly engaged.	Lubricate moving parts with silicone spray. Ensure crank is fully inserted and engaged. Check for any debris obstructing the arms.
Awning fabric appears dirty or stained.	Accumulation of dust, pollen, or environmental residue.	Clean with mild soap and lukewarm water using a soft brush. Rinse thoroughly and air dry.
Awning feels unstable after installation.	Mounting bolts are loose; wall structure is insufficient.	Check and tighten all mounting bolts. If the wall structure is compromised, consult a professional for reinforcement or alternative mounting solutions.
Awning makes unusual noises during operation.	Lack of lubrication; loose components.	Lubricate all moving parts. Inspect for any loose screws or bolts and tighten them.

9. SPECIFICATIONS

Feature	Detail
Model Number	300494
Dimensions (Width x Length x Height)	250 x 200 x 140 cm
Weight	17 kg
Fabric Material	280 g/m ² Polyester with Polyurethane coating
Frame Material	Powder-coated Aluminum
Drive Type	Manual Crank
Adjustable Angle	0 - 48 degrees
UV Protection	UV40+
Color	Grey

10. WARRANTY

Specific warranty terms and conditions for your Juskys Articulated Arm Awning are provided by the retailer or manufacturer at the time of purchase. Please retain your proof of purchase for any warranty claims. For detailed information regarding warranty coverage, duration, and claims process, please refer to the documentation included with your product or contact the seller directly.

11. SUPPORT

Should you encounter any issues or have questions not covered in this manual, please contact Juskys customer support. You can typically find contact information on the product packaging, the retailer's website, or the official Juskys website. When contacting support, please have your model number (300494) and purchase details ready.



Figure 11.1: The Juskys articulated arm awning fully extended, providing shade over a patio area, demonstrating its aesthetic integration and functional benefit.