

Manuals+

[Q & A](#) | [Deep Search](#) | [Upload](#)

manuals.plus /

› [Atopskins](#) /

› [Atopskins 6-in-1 Hair Dryer Brush Instruction Manual \(Model B0BVTGDPVD\)](#)

Atopskins B0BVTGDPVD

Atopskins 6-in-1 Hair Dryer Brush Instruction Manual

Model: B0BVTGDPVD

INTRODUCTION

The Atopskins 6-in-1 Hair Dryer Brush is a versatile hair styling tool designed for drying, straightening, curling, volumizing, and scalp massaging. This device combines multiple functions into one unit, offering various interchangeable attachments to achieve different hairstyles. It features ceramic coating and ion technology to help reduce frizz and static, promoting smoother, shinier hair.

IMPORTANT SAFETY INFORMATION

- Keep out of reach of children.
- Do not use the hair dryer while bathing or near water.
- Keep the power plug and cord away from heated surfaces.
- Allow the hair dryer to cool completely before storing.
- Do not rinse or submerge the device in water.
- Be cautious of overheating; ensure proper ventilation during use.
- Wear anti-scalding gloves when changing attachments or using the hot air brush to prevent burns.
- Children should use this product only under adult supervision.
- If you have very fine, thin, or short hair (above chin length), this hot air brush may not be recommended.

PRODUCT COMPONENTS

The Atopskins 6-in-1 Hair Dryer Brush set includes the main handle and six interchangeable styling attachments:

- Hair Dryer Nozzle
- Hair Straightening Brush
- Left Air Hair Curler
- Right Air Hair Curler
- Round Brush for Straightening and Volumizing
- Massage Hot Air Brush for Styling



Image: The main handle and the six distinct attachments included in the Atopskins 6-in-1 Hair Dryer Brush set.

SETUP AND ATTACHMENT INSTALLATION

To prepare your Atopskins Hair Dryer Brush for use, follow these steps to securely attach and detach the styling heads:

1. **Installation:** Select the desired brush head and align its tab with the slot on the main handle. Insert the brush head and twist it to the left until you hear a "click" sound, indicating it is securely locked.
2. **Removal:** Press and hold the release button located on the handle. While holding the button, twist the brush head to the right to unlock and remove it.



Image: Visual guide for installing and removing the interchangeable brush heads.

OPERATING INSTRUCTIONS

Before styling, ensure your hair is towel-dried to remove excess water for optimal results. Plug in the corded electric hair dryer and select your desired attachment.

Temperature Settings:

The device offers three temperature settings and one high-speed wind setting:

- **LOW (50°C, High Speed):** Suitable for dry or fine hair, ideal for summer use.
- **MIDDLE (80°C, High Speed):** For semi-dry or normal hair, suitable for general styling.
- **HIGH (110°C, High Speed):** For wet, thick, or curly hair, designed for quick drying, especially in winter.

Styling with Attachments:

- **Pre-shaped Nozzle:** Use to quickly dry hair and prepare it for further styling.
- **Cylinder Comb:** Creates a fluffy effect and can be used to roll natural waves.
- **Soft Smooth Comb:** Designed for a smooth effect with soft spherical comb teeth, also provides a gentle scalp massage.
- **30mm Curling Barrel:** Ready to use, utilize a clockwise curling roller for flexible styling.

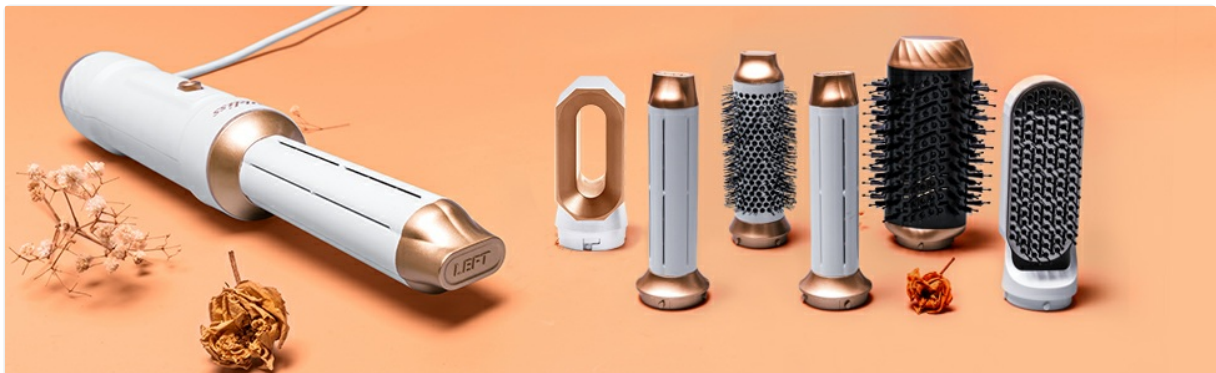


Image: Examples of styling results using various attachments.

Curling Instructions:

For best curling results, begin with dried hair and separate it into 2-3 layers. Apply hair products or styling agents as desired.

1. Select the appropriate curling barrel (left or right) for your desired curl direction.
2. Hold a 1/2-inch to 1-inch section of hair in the middle, allowing the ends to dangle.
3. Turn on the curling wand. Bring the barrel behind the dangling hair ends. The hair ends will automatically wrap around the barrel.
4. Slowly move the barrel from the hair ends towards the roots, allowing the hair to continue wrapping itself.
5. Hold the barrel in place for 10 seconds, then press and hold the cool wind setting for at least 10 seconds to set the curl.
6. Turn off the styling wand and pull the barrel straight down to release the curl.
7. Repeat as needed for all sections of hair. Use a setting or holding spray for longer-lasting results.



Image: Step-by-step guide for using the curling iron attachment.

Official Product Video:

Video: Demonstrates the various functions and attachments of the Atopskins 6-in-1 Hair Dryer Brush, including drying, straightening, and curling.

MAINTENANCE

Regular cleaning and proper care will extend the lifespan of your Atopskins Hair Dryer Brush.

- **Cleaning:** After use, detach the air inlet and brush heads. Clean any accumulated hair or debris from the air inlet and brush bristles. Ensure the device is completely cool before cleaning.
- **Storage:** Store the hair dryer brush and its attachments in a cool, dry place after they have fully cooled down.

TROUBLESHOOTING

Problem	Possible Cause	Solution
Curling effect is not strong.	This hot air brush provides a natural blow-style curl, which may not be as strong as traditional curling irons. Hair may be too wet or sections too large.	Ensure hair is mostly dry before curling. Take smaller sections of hair. Hold the curl for the recommended time (10 seconds hot, 10 seconds cool).
Hair does not wrap around the curling barrel.	Hair section is too large or too short. Incorrect technique.	Use smaller sections of hair (1/2 to 1 inch). Ensure hair is long enough to wrap around the barrel. Follow the curling instructions carefully, starting with the hair ends.
Device is loud or air flow is weak.	Air inlet or brush head may be clogged with hair or debris.	Clean the air inlet and brush heads regularly as described in the Maintenance section.
Slight odor during initial use.	Normal for new appliances.	The odor is normal and will quickly disappear after a few minutes of initial use.

SPECIFICATIONS

- **Product Dimensions:** 5.7 x 5.7 x 7.87 inches
- **Weight:** 2.4 Pounds
- **Manufacturer:** Atopskins
- **ASIN:** B0BVTGDPVD
- **Brand:** Atopskins
- **Color:** White
- **Material:** Ceramic, Nylon
- **Wattage:** 1000 watts
- **Power Source:** Corded Electric

WARRANTY AND SUPPORT

Information regarding specific warranty details or direct customer support contacts is not provided in the available product data. Please refer to the product packaging or the retailer's website for warranty claims and support inquiries.