

Cybex LEMO 2 3-in-1 High Chair

Cybex LEMO High Chair 3-in-1 Set Instruction Manual

Model: LEMO 2 3-in-1 High Chair

1. PRODUCT OVERVIEW

The CYBEX LEMO 3-in-1 High Chair is a versatile seating system designed to adapt to your child's growth, from 6 months up to 99 years (maximum weight 209 lbs). It integrates seamlessly into various stages of life, offering configurations for infants, toddlers, children, and adults.

Key features include:

- **Versatile Use:** Adapts from 6 months to 99 years, supporting up to 209 lbs.
- **Effortless Adjustment:** Seat and footrest can be adjusted quickly with one hand.
- **Individual Depth and Height Adjustment:** Multiple positions ensure comfortable seating for all ages.
- **Anti-Tip Wheels:** Provides stability and allows for easy movement.
- **Easy Assembly:** Requires minimal tools and can be set up in minutes.



Image 1.1: The Cybex LEMO High Chair in use by a family, demonstrating its versatility for different ages. Always use the restraint harness system and never leave the child unattended.



Image 1.2: Visual representation of the LEMO High Chair's adaptability, transforming from a bouncer for newborns to a high chair for infants, a junior chair for children, and an adult chair.

2. SAFETY INFORMATION

Please read and understand all safety warnings and instructions before using the Cybex LEMO High Chair. Failure to follow these instructions could result in serious injury.

- **Always use the restraint harness system** when a child is in the high chair.
- **Never leave the child unattended** in the high chair.

- Ensure the high chair is placed on a flat, stable surface.
- Keep children away from the product during assembly and disassembly.
- Do not use the product if any parts are broken, torn, or missing.
- The maximum weight recommendation for the chair is **209 pounds**.
- The integrated **anti-tip wheels** are designed to stabilize the seat and prevent tipping. Always ensure they are functioning correctly.



Image 2.1: Detail of the anti-tip wheels, which enhance stability and allow for safe movement of the chair.

3. ASSEMBLY AND SETUP

The Cybex LEMO High Chair is designed for straightforward assembly, typically requiring only eight screws and a few minutes to set up.

3.1. Basic High Chair Assembly

1. Unpack all components and verify against the parts list in your included manual.
2. Connect the main frame components using the provided screws.
3. Attach the seat and footrest platforms. Ensure they are securely fastened.
4. Confirm all connections are tight before use.

3.2. Attaching the Baby Set and Snack Tray (for 6 months+)

For infants aged 6 months and older, the Baby Set and Snack Tray can be easily attached to the high chair frame.

1. Slide the Baby Set onto the high chair seat until it clicks into place.
2. Attach the harness straps to the Baby Set.
3. Position the Snack Tray by sliding it onto the designated slots on the Baby Set until it locks securely.

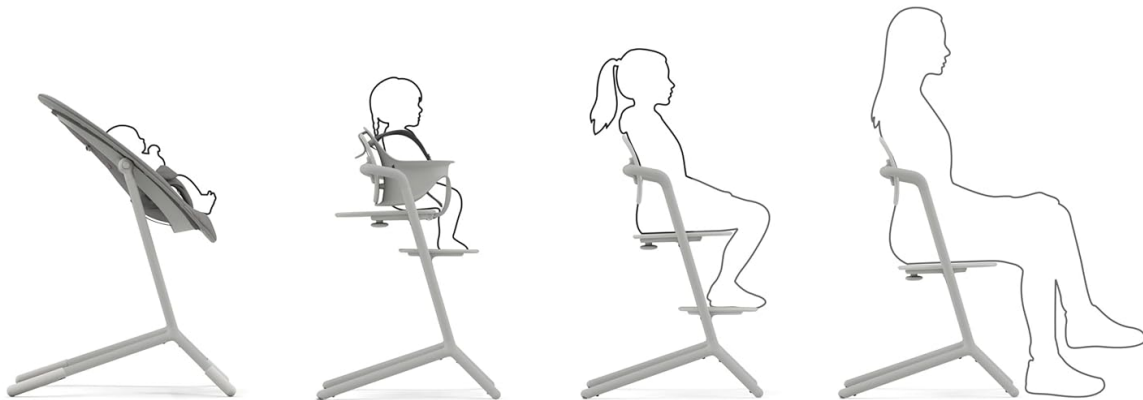


Image 3.1: The LEMO High Chair configured with the Baby Set and Snack Tray, suitable for infants starting solid foods.

3.3. Converting to Junior or Adult Chair

As your child grows, the Baby Set and Snack Tray can be removed to transform the LEMO into a comfortable chair for older children or adults.

1. To remove the Snack Tray, press the release buttons (if applicable) and slide it off.
2. To remove the Baby Set, locate the release mechanisms and carefully detach it from the seat.
3. Adjust the seat and footrest to the desired height and depth for the user.



Image 3.2: The LEMO High Chair without the Baby Set, suitable for toddlers and older children.



Image 3.3: The LEMO High Chair in its adult chair configuration, demonstrating its long-term usability.

4. OPERATING INSTRUCTIONS

4.1. One-Hand Depth and Height Adjustment

The LEMO High Chair features a unique one-hand adjustment system for both the seat and footrest, allowing for quick and easy customization.

1. Locate the adjustment levers on the side of the chair, beneath the seat and footrest.
2. Press the lever and simultaneously slide the seat or footrest up or down to the desired height.
3. Release the lever to lock the seat or footrest into position. Ensure it is securely locked before placing a child in the chair.
4. For depth adjustment, the seat and footrest can also be moved forward or backward by pressing the same levers and sliding horizontally.

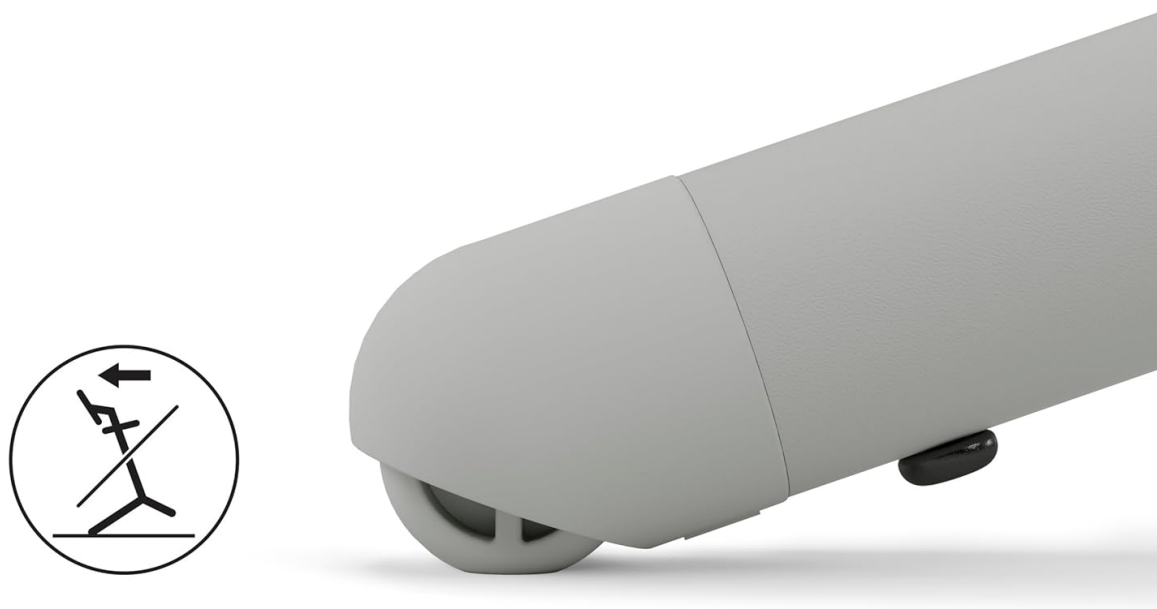


Image 4.1: Side view illustrating the mechanism for adjusting the seat and footrest height and depth.



Image 4.2: Rear view highlighting the ease of adjustment for the chair's components.

5. MAINTENANCE AND CARE

Regular cleaning and maintenance will ensure the longevity and hygiene of your Cybex LEMO High Chair.

5.1. Cleaning the Chair Frame and Plastic Components

- Wipe down all surfaces with a damp cloth and mild soap.
- Avoid abrasive cleaners or solvents that may damage the materials.
- Ensure all parts are thoroughly dried after cleaning to prevent moisture damage.

5.2. Cleaning the Snack Tray

- The Snack Tray is removable and can be washed by hand with warm soapy water.
- Ensure the tray is completely dry before reattaching.

5.3. Cleaning the Harness Straps and Baby Set

- The harness straps can be removed for cleaning. Hand wash with mild soap and water.
- Allow straps to air dry completely before reinstallation.

- The Baby Set can be wiped clean with a damp cloth. For deeper cleaning, it may be removed and washed by hand.

5.4. Care for Wooden Components

- The wooden parts of the chair should be kept dry. Prolonged exposure to moisture can cause the plywood to bulge or crack.
- Wipe spills immediately, especially from foods like berries, which can stain the wood.
- Consider applying a furniture wax or sealant to the wooden surfaces for added protection, if desired.

6. TROUBLESHOOTING

This section addresses common issues you might encounter with your Cybex LEMO High Chair.

6.1. Difficulty Adjusting Seat or Footrest

- Ensure the adjustment levers are fully pressed before attempting to slide the components.
- Check for any obstructions or debris in the adjustment tracks.
- If the mechanism feels stiff, apply a small amount of silicone-based lubricant (avoid oil-based lubricants) to the tracks.

6.2. Baby Difficult to Place In/Out of Baby Set

- Ensure the harness straps are loosened sufficiently before attempting to place or remove the child.
- Verify that the Baby Set is correctly installed and not misaligned.

6.3. Missing or Damaged Parts

- If you receive the product with missing or damaged parts, do not attempt to assemble or use it.
- Contact Cybex customer service immediately for assistance and replacement parts.

7. SPECIFICATIONS

Feature	Specification
Product Dimensions	22 x 21.5 x 32.1 inches (D x W x H)
Item Weight	20.5 pounds
Maximum Weight Recommendation	209 Pounds
Material Type	Aluminum, Beech Wood, Metal, Plastic, Silicone
Material Composition	60% Aluminum, 20% Beechwood, 15% Plastic, 4% Metal, 1% Silicone
Model Number	521003585
Is Portable	Yes

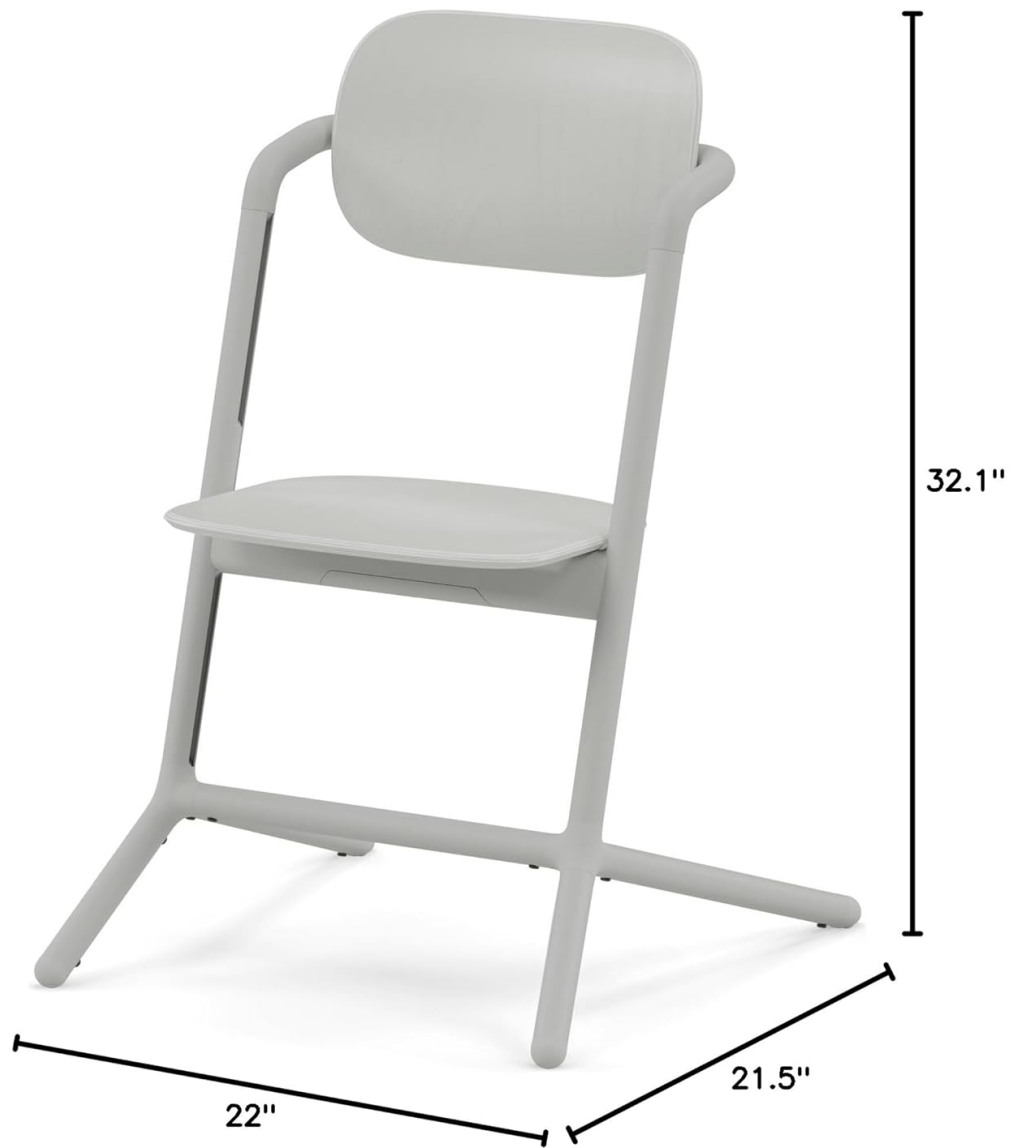


Image 7.1: Dimensional diagram of the Cybex LEMO High Chair, indicating its height, width, and depth.

8. WARRANTY AND SUPPORT

For information regarding the product warranty, please refer to the warranty card included with your purchase or visit the official Cybex website. If you have any questions, require technical support, or need to order replacement parts, please contact Cybex customer service.

Cybex Customer Service: Please refer to your product packaging or the official Cybex website for the most current contact information.