

HDWR wagPRO-P500

HDWR wagPRO-P500 Platform Scale User Manual

Model: wagPRO-P500 | Brand: HDWR

1. INTRODUCTION

Thank you for choosing the HDWR wagPRO-P500 Platform Scale. This manual provides essential information for the safe and efficient operation, setup, and maintenance of your new scale. Please read this manual thoroughly before use and keep it for future reference.

The HDWR wagPRO-P500 is a robust platform scale designed for precise weighing of larger items in industrial, warehouse, agricultural, and logistics environments. It features a high capacity, accurate measurements, and a user-friendly interface.

2. PRODUCT FEATURES

- **Platform:** The scale features a spacious 60 x 45 cm platform for easy placement of goods, equipped with special tabs to prevent accidental slipping.
- **Precise Measurement:** Offers precise measurement for items weighing from 200 grams up to a maximum capacity of 500 kg, with an accuracy of 0.2 kg.
- **User-Friendly Interface:** Features three easy-to-read, green backlit LCD digital displays showing product weight and unit price.
- **Additional Functions:** Includes useful functions such as Tare, unit price input, and totalization.
- **Power Operation:** An integrated 4 Ah battery provides wireless operation for approximately 150 hours.

FONCTIONNALITÉ ET CONFORT D'UTILISATION



Le confort et la commodité d'utilisation quotidienne sont améliorés par la présence de **trois affichages numériques LCD rétroéclairés** en vert, qui vous permettent de visualiser des informations telles que le poids du produit actuellement pesé ou la valeur unitaire. Les larges boutons facilitent le réglage précis des différentes fonctions.



Image: Key features of the HDWR wagPRO-P500 scale, including display, hold function, unit conversion, accuracy, tare, and battery power.

LES AVANTAGES DU wagPRO P500



Parmi les fonctionnalités utiles et pratiques que la balance offre, nous pouvons trouver des fonctions telles que la tare et la saisie et la sommation des prix unitaires.



La balance se caractérise par l'utilisation de matériaux de haute qualité et une construction robuste, ce qui garantit sa durabilité. Cela en fait un appareil idéal pour une utilisation dans des conditions industrielles exigeantes.



La batterie intégrée de 4 Ah garantit un fonctionnement sans fil et ininterrompu pendant environ 150 heures.



Image: Details on measurement accuracy, charging process, the robust platform, and the clear display of the scale.

3. SETUP INSTRUCTIONS

1. **Unpacking:** Carefully remove all components from the packaging. Verify that all parts are present: platform, display unit, support column, power adapter, and user manual.

2. **Assemble the Support Column:** Attach the display support column to the platform base. Ensure it is securely fastened using the provided hardware.
3. **Attach the Display Unit:** Mount the display unit onto the top of the support column. Connect the cable from the platform to the display unit.
4. **Placement:** Place the scale on a firm, level, and stable surface to ensure accurate readings. Avoid areas with excessive vibration, drafts, or extreme temperature changes.
5. **Initial Charging:** Connect the scale to a power outlet using the supplied mains adapter. Allow the internal battery to fully charge before the first wireless use. The charging indicator on the display will show the charging status.

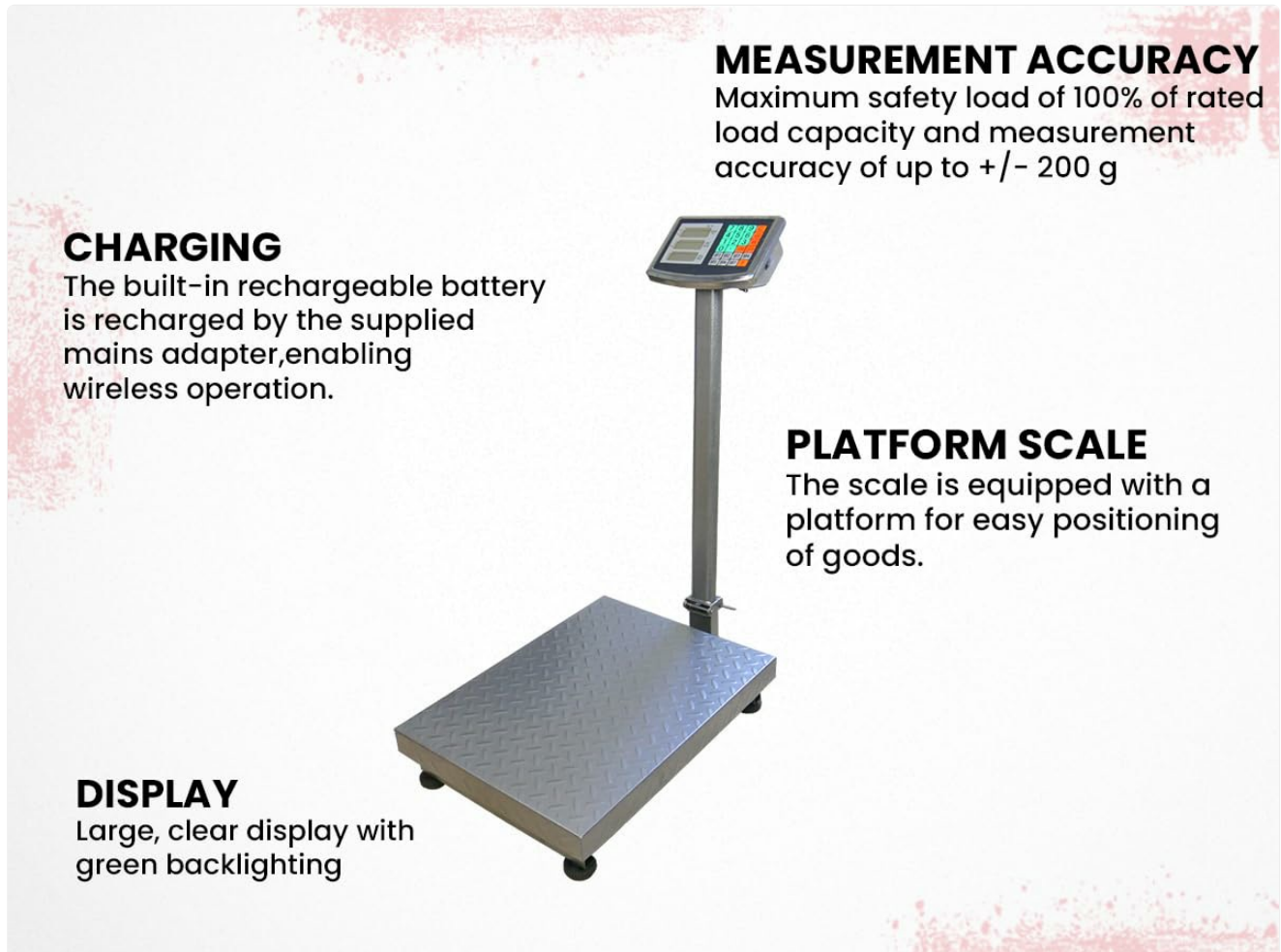


Image: An assembled HDWR wagPRO-P500 platform scale, ready for use.

4. OPERATING INSTRUCTIONS

4.1 Power On/Off

- To power on the scale, press the **[ON/OFF]** button.
- To power off the scale, press and hold the **[ON/OFF]** button until the display turns off.

4.2 Basic Weighing

1. Ensure the scale is powered on and the display shows '0.00'.
2. Carefully place the item to be weighed onto the center of the platform.
3. Read the weight displayed on the screen.

4.3 Tare Function

The Tare function allows you to subtract the weight of a container or packaging, so only the net weight of the contents is measured.

1. Place the empty container onto the platform. The display will show its weight.
2. Press the **[TARE]** button. The display will reset to '0.00'.
3. Place the items to be weighed into the container. The display will now show only the weight of the items.
4. To clear the tare, remove the container and items, then press **[TARE]** again.

4.4 Unit Conversion

The scale supports measurement in kilograms (kg) and pounds (lb).

- To switch between units, press the **[UNITS]** button (or similar button as indicated on your display). The active unit will be shown on the display.

4.5 Price Calculation (if applicable)

If your model supports price calculation, follow these steps:

1. Place the item on the platform.
2. Using the numeric keypad, enter the unit price.
3. The total price will be displayed automatically.



Image: A detailed view of the scale's green backlit LCD display and control keypad, showing weight, unit price, and total price fields.

5. MAINTENANCE

5.1 Cleaning

- Always disconnect the scale from the power supply before cleaning.
- Wipe the platform and display unit with a soft, damp cloth. Use a mild detergent if necessary.
- Do not use abrasive cleaners, solvents, or immerse any part of the scale in water.
- Ensure no liquid enters the display unit or internal components.

5.2 Battery Care

- Recharge the battery when the low battery indicator appears on the display.
- For optimal battery life, avoid completely draining the battery frequently.
- If the scale is not used for an extended period, charge the battery every 3 months to prevent deep discharge.

5.3 Storage

- Store the scale in a dry, clean environment, away from direct sunlight and extreme temperatures.
- Avoid placing heavy objects on the platform during storage.



Image: A close-up view of the durable, textured metal platform, designed for secure placement of items.

6. TROUBLESHOOTING

Problem	Possible Cause	Solution
Scale does not turn on.	Battery is discharged or power adapter is not connected.	Connect the power adapter and charge the battery. Ensure the power outlet is functional.

Problem	Possible Cause	Solution
Inaccurate readings.	Scale not on a level surface, external vibrations, or overload.	Place the scale on a stable, level surface. Remove any sources of vibration. Do not exceed the maximum weight capacity.
Display shows 'Err' or similar error.	Overload, internal error, or unstable reading.	Remove the load from the platform. Power off and restart the scale. If the error persists, contact customer support.
Display is dim or flickering.	Low battery.	Recharge the battery using the provided power adapter.

7. SPECIFICATIONS

- **Model:** wagPRO-P500
- **Brand:** HDWR
- **Dimensions (L x W x H):** 75 x 45 x 88 cm
- **Platform Dimensions:** 60 x 45 cm
- **Weight:** 11.6 kg
- **Maximum Weight Capacity:** 500 kg
- **Reading Precision:** 200 grams (0.2 kg)
- **Measurement Accuracy:** +/- 0.2%
- **Material:** Metal
- **Display Type:** LCD with green backlight
- **Battery:** Integrated 4 Ah (approx. 150 hours wireless operation)
- **Special Features:** Backlit display, high load capacity, tare function, large display, portable.
- **Recommended Uses:** Industry, agriculture, logistics, wholesale.

wagPRO P500

BALANCE À PLATEFORME

La balance à plateforme wagPRO P500 est conçue pour une pesée précise des produits de plus grande taille. La balance dispose **d'une plateforme d'une dimension de 60 x 45 cm**, permettant un placement pratique des marchandises, et des protubérances spéciales assurent la sécurité des articles et évitent les glissements accidentels.

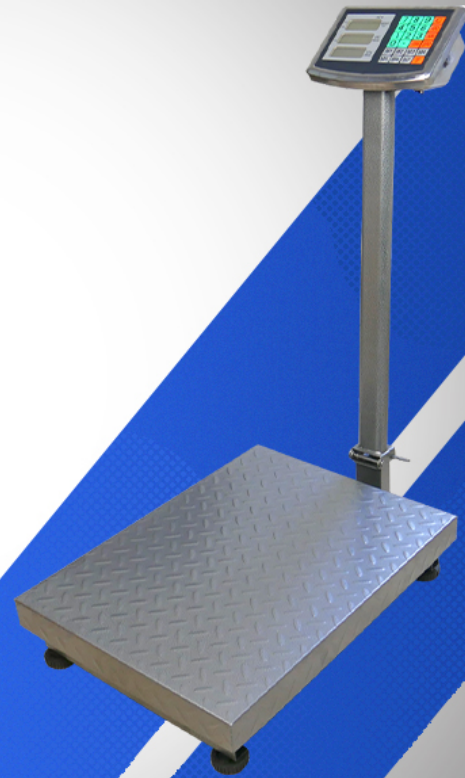


Image: Dimensions of the wagPRO-P500 platform scale, illustrating its robust design and size.

8. WARRANTY AND SUPPORT

This product is supplied with a user manual. For information regarding warranty coverage, please refer to the documentation provided at the time of purchase or contact your retailer.

For technical support, service, or inquiries about spare parts, please contact HDWR customer service through their official website or the contact information provided with your purchase. Please have your model number (wagPRO-P500) and purchase date ready when contacting support.