

JISULIFE FA42

JISULIFE FA42 Mini Portable Bladeless Handheld Fan User Manual

Model: FA42

1. INTRODUCTION

Thank you for choosing the JISULIFE FA42 Mini Portable Bladeless Handheld Fan. This device is designed to provide powerful and safe personal cooling with its innovative bladeless design and multiple speed settings. Please read this manual carefully before use to ensure proper operation and maintenance.

2. IMPORTANT SAFETY INSTRUCTIONS

- Do not insert fingers or foreign objects into the fan's air inlet or outlet.
- Keep the device away from water and moisture.
- Do not disassemble, repair, or modify the fan. Contact customer support if service is required.
- Keep out of reach of small children without adult supervision.
- Use only the provided charging cable or a certified USB-C cable for charging.
- Avoid exposing the fan to extreme temperatures or direct sunlight for extended periods.

3. PRODUCT OVERVIEW

The JISULIFE FA42 fan features a compact, bladeless design for enhanced safety and portability. It incorporates a powerful turbo engine and a high-voltage protection chip.



Figure 3.1: JISULIFE FA42 Mini Portable Bladeless Handheld Fan (Brown)

Gathering Air Duct

Larger air outlet area and longer blowing distance

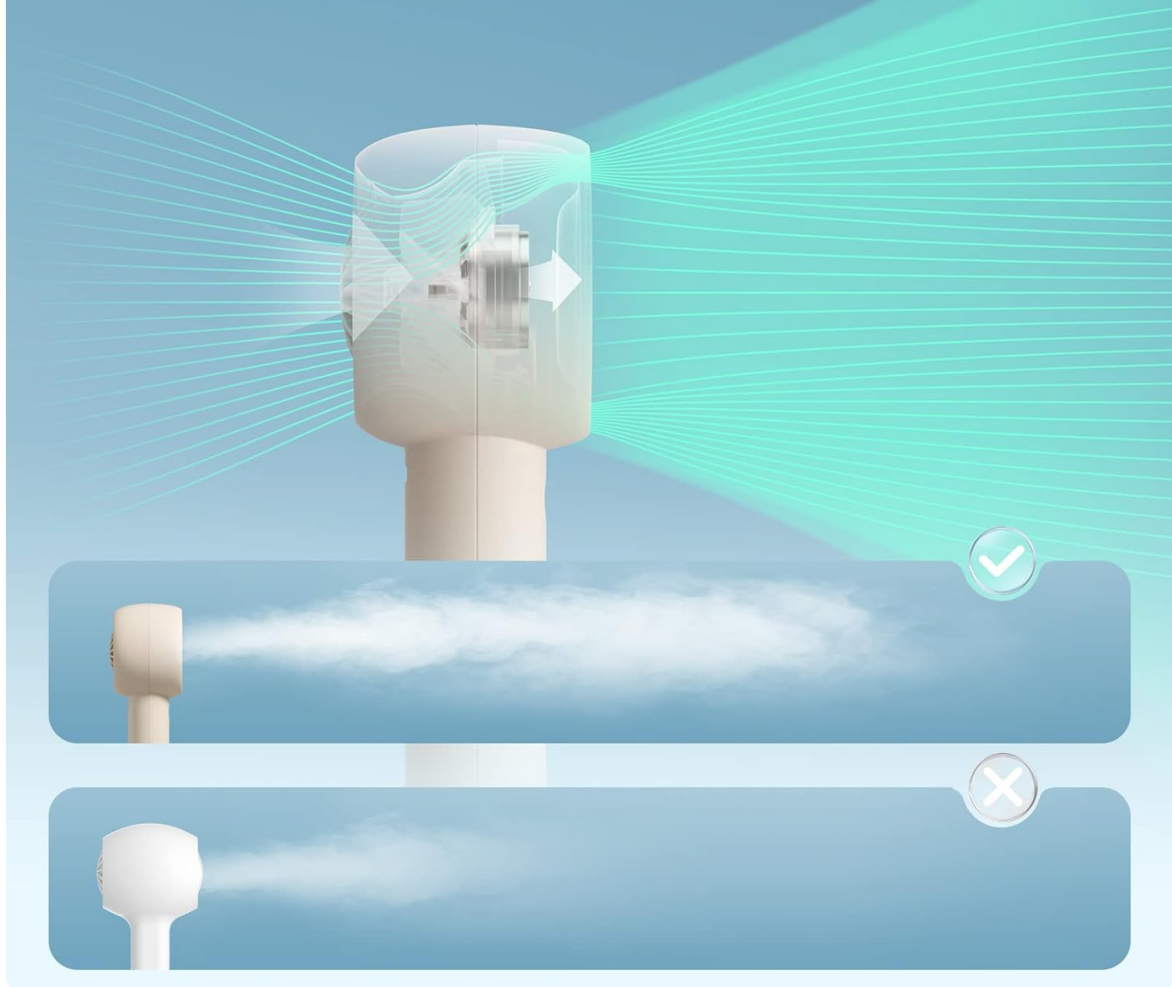


Figure 3.2: Illustration of the fan's gathering air duct technology, demonstrating a larger air outlet area and longer blowing distance.

High Performance Brushless Motor, Curved Turbo Fan

Reduce noise and provide comfortable wind



Figure 3.3: Internal view highlighting the high-performance brushless motor and curved turbo fan designed for reduced noise and comfortable airflow.

4. SETUP

4.1. Unboxing and Initial Charge

Upon unboxing, ensure all components are present: the fan unit, USB-C charging cable, and lanyard.



Figure 4.1: The JISULIFE FA42 fan, its packaging, USB-C charging cable, and instruction manual. Before first use, fully charge the fan. Connect the provided USB-C cable to the charging port on the fan and the other end to a USB power adapter (not included) or a computer's USB port. The indicator light will show charging status.

Type-C Charging

It only takes 5-6h to fully charge, more convenience to use.



Figure 4.2: The fan's Type-C charging port in use. A full charge takes approximately 4 hours and provides up to 16 hours of cooling time.

4.2. Attaching the Lanyard

Thread the lanyard through the designated loop at the base of the fan's handle. This allows for

convenient carrying on your wrist or attaching to a bag.

5. OPERATING INSTRUCTIONS

5.1. Power On/Off and Speed Adjustment

The fan features a single power button for all operations:

1. **To Power On:** Press the power button once. The fan will start at Speed 1.
2. **To Adjust Speed:** Press the power button repeatedly to cycle through the 5 available speed settings (Speed 1 to Speed 5).
3. **To Power Off:** After cycling through Speed 5, pressing the button again will turn the fan off. Alternatively, press and hold the power button for 2 seconds to turn off the fan from any speed setting.



Figure 5.1: The fan offers 5 adjustable speeds, ranging from 5000r/min (Low) to 9000r/min (High).

5.2. Battery Life Indication

The indicator light near the power button also provides battery status. Refer to the product's packaging or official website for detailed light patterns (e.g., solid light for full charge, blinking for low battery).

Mini Size, 4500mAh Large Capacity

16h

Sleep Wind



8.5h

Cold Wind



5h

Strong Wind



Figure 5.2: The 4500mAh battery provides up to 16 hours of 'Sleep Wind', 8.5 hours of 'Cold Wind', and 5 hours of 'Strong Wind'.

5.3. Usage Scenarios

The compact and powerful design makes this fan suitable for various activities:

- **Outdoor Activities:** Travel, camping, commuting, shopping, music festivals.
- **Indoor Use:** Office, dorm room, makeup application, quick-drying lashes.



Figure 5.3: The fan is versatile for use while walking, in the office, during makeup application, and while camping.

Your browser does not support the video tag.

Video 5.1: An official product video from JISULIFE-NA demonstrating the features and use of the Mini Handheld Turbo Fan.

6. MAINTENANCE

6.1. Cleaning

To clean the fan, gently wipe the exterior with a soft, dry cloth. Do not use abrasive cleaners, solvents, or immerse the fan in water. Ensure the fan is turned off before cleaning.

6.2. Storage

When not in use for extended periods, store the fan in a cool, dry place away from direct sunlight and extreme temperatures. It is recommended to charge the fan every 3 months to maintain battery health.

7. TROUBLESHOOTING

Problem	Possible Cause	Solution
Fan does not turn on	Low battery; Power button not pressed correctly	Charge the fan; Press and hold the power button for 2 seconds to ensure it powers on.
Weak airflow	Low battery; Fan speed set too low	Charge the fan; Increase the fan speed by pressing the power button.
Fan not charging	Faulty cable/adapter; Loose connection	Try a different USB-C cable or power adapter; Ensure the cable is securely connected to both the fan and the power source.
Unusual noise	Obstruction in air duct; Internal issue	Turn off the fan and check for any obstructions in the air inlet/outlet. If the issue persists, contact customer support.

8. SPECIFICATIONS

Feature	Detail
Brand	JISULIFE
Model Name	FA42
Color	Brown
Power Source	Battery Powered (1 Lithium Ion battery included)
Battery Capacity	4500mAh
Max Cooling Time	Up to 16 hours
Charging Time	Approx. 4 hours
Main Power Connector Type	USB-C
Number of Power Levels	5
Product Dimensions	1.85"D x 2.44"W x 5.98"H
Item Weight	148 Grams (5.2 ounces)
Noise Level	50 Decibels
Special Features	Bladeless, Compact, Portable

9. WARRANTY AND SUPPORT

For warranty information and customer support, please refer to the warranty card included in your product packaging or visit the official JISULIFE website. You can also contact JISULIFE customer service through their [Amazon Store](#).