

ORIA ORIA 2-in-1 Bluetooth 5.0 Receiver/Transmitter

ORIA 2-in-1 Bluetooth 5.0 Audio Receiver and Transmitter User Manual

Model: ORIA 2-in-1 Bluetooth 5.0 Receiver/Transmitter

1. INTRODUCTION

This manual provides detailed instructions for the ORIA 2-in-1 Bluetooth 5.0 Audio Receiver and Transmitter. This device allows you to add Bluetooth functionality to non-Bluetooth audio equipment, enabling wireless audio streaming and hands-free calling. It operates in two modes: Transmitter (TX) to send audio from wired sources to Bluetooth headphones/speakers, and Receiver (RX) to receive Bluetooth audio from devices like smartphones and play it through wired speakers or car stereos.



Image 1.1: The ORIA 2-in-1 Bluetooth 5.0 Audio Receiver and Transmitter. This image displays the compact black device with its 3.5mm audio jack and a blue indicator light.

2. PRODUCT OVERVIEW

2.1 Package Contents

- ORIA 2-in-1 Bluetooth 5.0 Receiver/Transmitter
- 3.5mm Audio Connector
- USB Charging Cable
- User Manual



Image 2.1: Contents of the ORIA Bluetooth adapter package. This image shows the main device, a 3.5mm audio connector, a USB charging cable, and the user manual, all neatly arranged next to the product box.

2.2 Device Components



Image 2.2: Labeled diagram of the ORIA Bluetooth adapter's components. This image highlights the Multifunction Button (Power/Play/Pause), Aux in/out port, Microphone, Transmitter/Receiver (TX/RX) Mode Button, Indicator Light, and 5V/1A Charging port.

- **Multifunction Button (M):** Power On/Off, Play/Pause, Answer/End Calls.
- **Aux In/Out Port:** 3.5mm audio jack for connecting to audio devices.
- **Microphone:** For hands-free calling.
- **TX/RX Mode Button:** Switch between Transmitter and Receiver modes.
- **Indicator Light:** Displays device status (pairing, connected, charging).
- **5V/1A Charging Port:** Micro USB port for charging the device.

2.3 Key Features

- Bluetooth 5.0 technology for stable and efficient connection.
- 2-in-1 functionality: Transmitter (TX) and Receiver (RX) modes.
- Integrated microphone for hands-free calling.

- Noise cancelling technology for clear audio.
- Up to 8 hours of battery life for music playback or calls.
- Compact and portable design.
- Operating range of up to 33 feet (10 meters).

One full charge lasts for 8 hours



Image 2.3: Visual representation of the ORIA Bluetooth adapter's battery life and connection stability. The image indicates 8 hours of music playback, stable connection, 8 hours of call time, and a 2-hour full charge time.

3. SETUP AND CHARGING

3.1 Charging the Device

Before first use, fully charge the device.

1. Connect the provided USB charging cable to the 5V/1A Charging Port on the device.
2. Plug the other end of the USB cable into a 5V/1A USB power source (e.g., car charger, wall adapter, computer USB port).

3. The indicator light will show charging status (e.g., red while charging, off when fully charged).
4. A full charge typically takes approximately 2 hours.

Note: The device must be charged via a 5V/1A USB port. Using a different voltage or current may damage the device.

3.2 Power On/Off

- **Power On:** Press and hold the Multifunction Button (M) for approximately 3 seconds until the indicator light flashes.
- **Power Off:** Press and hold the Multifunction Button (M) for approximately 3 seconds until the indicator light turns off.

4. OPERATING MODES

4.1 Bluetooth Receiver Mode (RX)

In Receiver (RX) mode, the device receives Bluetooth audio from your smartphone, tablet, or other Bluetooth-enabled device and transmits it to non-Bluetooth speakers, car stereos, or headphones via the 3.5mm audio cable.

1. Ensure the device is powered on.
2. Slide the TX/RX Mode Button to the "RX" position.
3. Plug the 3.5mm audio connector into the Aux In/Out Port of the ORIA adapter.
4. Connect the other end of the 3.5mm audio connector to the AUX input of your car stereo, home stereo system, or wired headphones.
5. The indicator light will flash, indicating it's in pairing mode.
6. On your Bluetooth-enabled device (e.g., smartphone), go to Bluetooth settings and search for "C28" (or similar device name).
7. Select "C28" to pair. Once connected, the indicator light will remain solid blue.
8. You can now stream audio wirelessly from your device to your connected audio system.

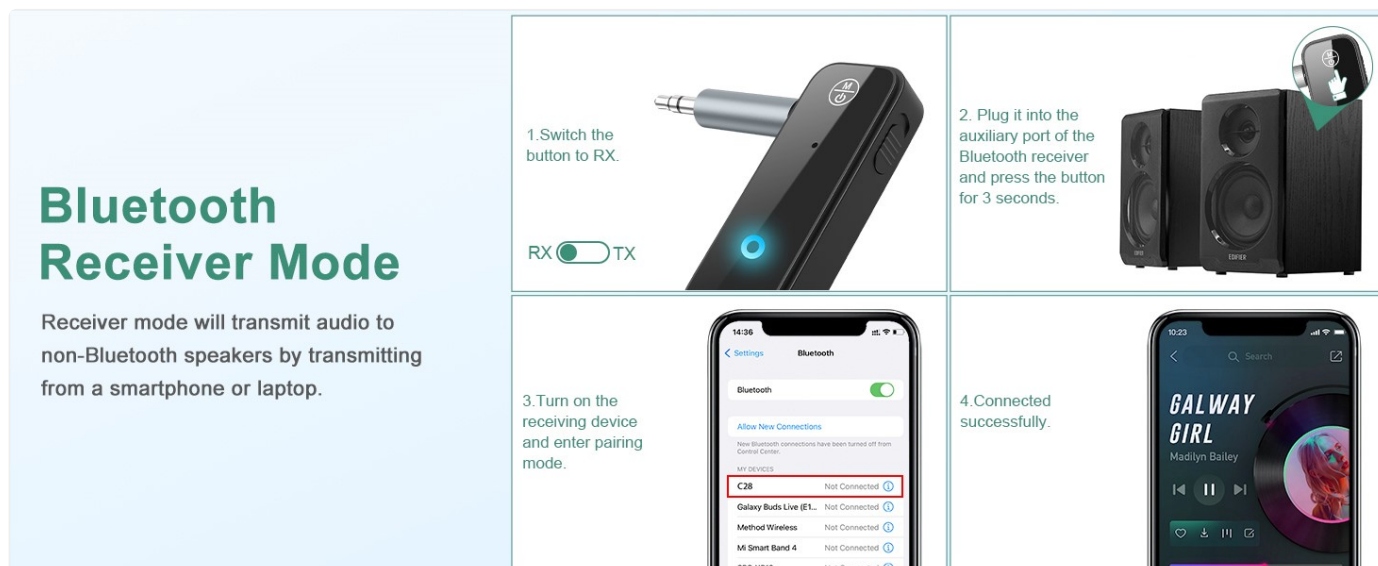


Image 4.1: Visual guide for setting up the device in Bluetooth Receiver Mode. It illustrates switching to RX, plugging into an auxiliary port (e.g., speakers), turning on the receiving device, and successfully connecting via a smartphone's Bluetooth settings.

4.2 Bluetooth Transmitter Mode (TX)

In Transmitter (TX) mode, the device converts wired audio signals from non-Bluetooth sources (like TVs, PCs, or airplane entertainment systems) into wireless Bluetooth signals, which can then be streamed to Bluetooth headphones or speakers.

1. Ensure the device is powered on.
2. Slide the TX/RX Mode Button to the "TX" position.
3. Plug the 3.5mm audio connector into the Aux In/Out Port of the ORIA adapter.
4. Connect the other end of the 3.5mm audio connector to the audio output (e.g., headphone jack) of your non-Bluetooth audio source (e.g., TV, PC).
5. The indicator light will flash, indicating it's in pairing mode.
6. Put your Bluetooth headphones or speaker into pairing mode.
7. The ORIA adapter will automatically search for and connect to nearby Bluetooth receiving devices. Once connected, the indicator light will remain solid blue.
8. You can now listen to audio from your wired source wirelessly.

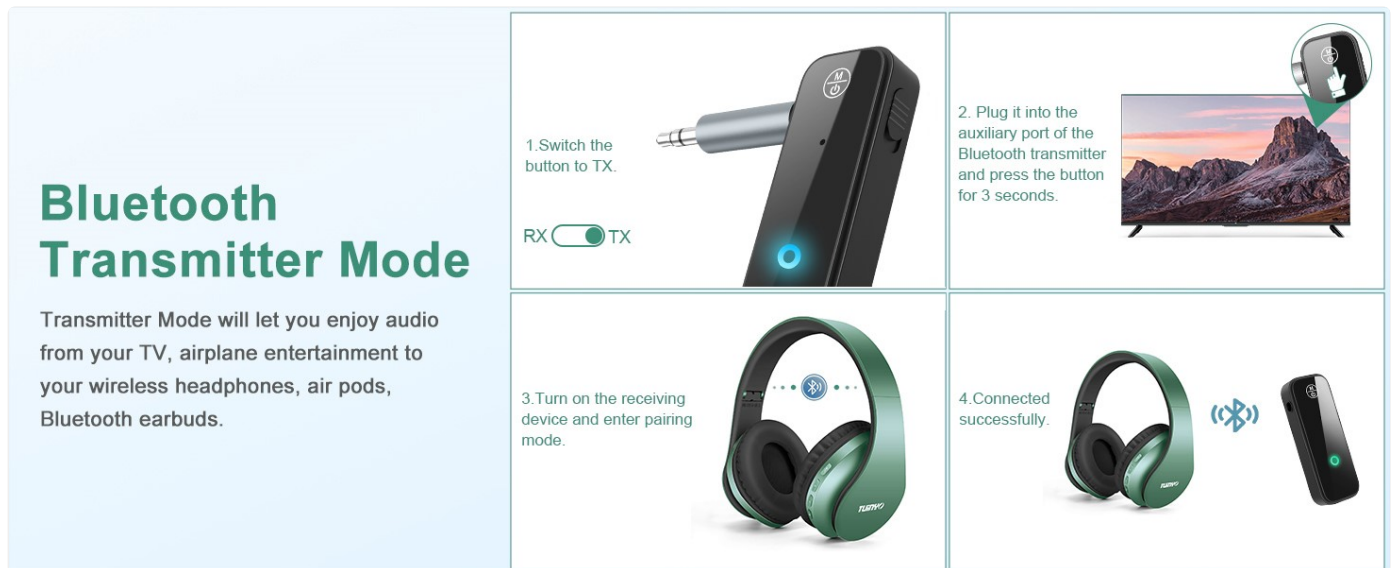


Image 4.2: Visual guide for setting up the device in Bluetooth Transmitter Mode. It shows switching to TX, plugging into an auxiliary port (e.g., TV), turning on the receiving device (headphones) and entering pairing mode, and successfully connecting.

4.3 Hands-Free Calling (RX Mode Only)

When the device is in Receiver (RX) mode and connected to your smartphone, you can use its built-in microphone for hands-free calls.

- **Answer Call:** Short press the Multifunction Button (M) once.
- **End Call:** Short press the Multifunction Button (M) once during a call.
- **Reject Call:** Press and hold the Multifunction Button (M) for approximately 2 seconds.
- **Redial Last Number:** Double-press the Multifunction Button (M).



Image 4.3: Illustration of hands-free calling features. This image depicts the functions: Answer, Redial last number, and Reject, all controlled via the multifunction button.

5. MAINTENANCE

- Keep the device dry. Avoid exposure to moisture or liquids.
- Clean the device with a soft, dry cloth. Do not use harsh chemicals or abrasive cleaners.
- Store the device in a cool, dry place when not in use.
- Avoid extreme temperatures, as this can affect battery life and device performance.

6. TROUBLESHOOTING

Problem	Possible Cause	Solution
---------	----------------	----------

Problem	Possible Cause	Solution
Device does not power on.	Low battery.	Charge the device for at least 2 hours using a 5V/1A USB power source.
Cannot pair with a Bluetooth device.	Device not in pairing mode; too far from source; interference.	<ul style="list-style-type: none"> • Ensure the ORIA adapter is in the correct TX/RX mode and its indicator light is flashing (pairing mode). • Place the ORIA adapter and the target Bluetooth device closer together (within 10 meters). • Turn off other Bluetooth devices nearby to reduce interference. • Restart both devices and try pairing again.
No audio or poor audio quality.	Incorrect cable connection; volume too low; incorrect mode.	<ul style="list-style-type: none"> • Verify the 3.5mm audio cable is securely connected to both the ORIA adapter and the audio source/receiver. • Adjust the volume on both the ORIA adapter (if applicable) and the connected audio device. • Ensure the ORIA adapter is in the correct mode (TX for transmitting, RX for receiving). • Check if the audio source is playing.
Hands-free calling not working.	Not in RX mode; microphone blocked; phone settings.	<ul style="list-style-type: none"> • Ensure the device is in Receiver (RX) mode and successfully paired with your smartphone. • Check that the microphone is not obstructed. • Verify your phone's audio output settings are directed to the Bluetooth device.

7. SPECIFICATIONS

Model	ORIA 2-in-1 Bluetooth 5.0 Receiver/Transmitter
Bluetooth Version	5.0
Operating Modes	Transmitter (TX) and Receiver (RX)
Connectivity Technology	Bluetooth, 3.5mm AUX
Operating Range	Up to 10 meters (33 feet)
Battery Life (Music/Calls)	Up to 8 hours
Charging Time	Approximately 2 hours
Charging Input	5V/1A USB
Item Weight	1.13 ounces (approx. 32 grams)
Dimensions	4.02 x 2.64 x 0.67 inches (approx. 10.2 x 6.7 x 1.7 cm)
Material	Aluminum

8. SAFETY INFORMATION

Please read and follow these safety guidelines to ensure proper use and prevent damage to the device or injury.

- This product may interfere with other wireless devices.
- Always follow battery handling precautions and dispose of the battery safely according to local regulations.
- Do not expose the device to extreme temperatures (above 45°C / 113°F or below -10°C / 14°F) or high humidity.
- Do not disassemble, modify, or attempt to repair the device yourself. This will void the warranty and may cause damage or injury.
- Keep the device away from water and other liquids.
- Use only the specified 5V/1A USB charging port.

9. WARRANTY AND SUPPORT

ORIA products are designed for reliability and performance. For any questions, technical support, or warranty inquiries, please contact ORIA customer service through the retailer where the product was purchased or visit the official ORIA website.

Manufacturer: ORIA

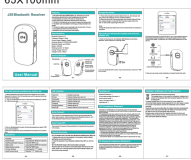
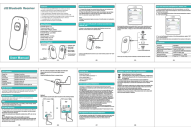
Brand: ORIA



© 2025 ORIA. All rights reserved.

Related Documents - ORIA 2-in-1 Bluetooth 5.0 Receiver/Transmitter

	<p>BR08 Smart Bluetooth Receiver User Manual</p> <p>User manual for the BR08 Smart Bluetooth Receiver, detailing its features, operating instructions, troubleshooting, and packaging.</p>
	<p>C28 Wireless Transmitter Receiver User Manual</p> <p>User manual for the C28 Wireless Transmitter Receiver, detailing package contents, specifications, interface diagram, how to use in receiver and transmitter modes, and precautions.</p>
	<p>Earthquake BT5.3NC Bluetooth Wireless Transmitter & Receiver User Manual</p> <p>User manual for the Earthquake BT5.3NC Bluetooth Wireless Transmitter & Receiver Audio Adapter, detailing its features, setup, operation, and troubleshooting for seamless wireless audio streaming.</p>
<p>J47 Bluetooth Receiver</p> <p>User Manual</p>	<p>J47 Bluetooth Receiver User Manual</p> <p>User manual for the J47 Bluetooth Receiver, detailing features, specifications, pairing instructions, operations, LED indicators, troubleshooting, package contents, and compliance statements.</p>

	<p>J29 Bluetooth Receiver User Manual</p> <p>User manual for the J29 Bluetooth Receiver, detailing features, specifications, operations, pairing instructions, troubleshooting, and FCC compliance.</p>
	<p>J22 Bluetooth Receiver User Manual - COMSOON</p> <p>Comprehensive user manual for the COMSOON J22 Bluetooth Receiver, detailing features, specifications, pairing instructions, operations, troubleshooting, and compliance information for wireless audio connectivity.</p>