

EASTROCK B0BVQPWZPR

EASTROCK A-Frame Portable Foldable Guitar Stand Instruction Manual

Model: B0BVQPWZPR | Brand: EASTROCK

INTRODUCTION

Thank you for choosing the EASTROCK A-Frame Portable Foldable Guitar Stand. This stand is designed to provide stable and secure support for a variety of stringed instruments, including acoustic guitars, electric guitars, basses, banjos, and ukuleles. Its foldable design ensures portability and easy storage, while protective padding safeguards your instrument. Please read this manual thoroughly before use to ensure proper setup and care.

SAFETY INFORMATION

- Ensure the stand is fully unfolded and stable on a flat, level surface before placing any instrument on it.
- Do not exceed the weight capacity of the stand. While robust, excessive weight can compromise stability.
- Keep the stand away from high-traffic areas to prevent accidental bumps or knock-overs.
- Regularly inspect the stand for any signs of wear or damage to the protective padding or structural components. Discontinue use if damage is found.
- Keep out of reach of small children and pets to prevent injury or damage to the instrument.

PACKAGE CONTENTS

- 1 x EASTROCK A-Frame Portable Foldable Guitar Stand (Metal 1 pack gray)

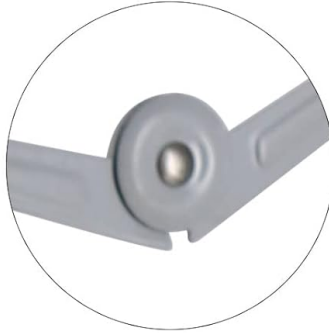
PRODUCT FEATURES

High-Quality Material

Product Features



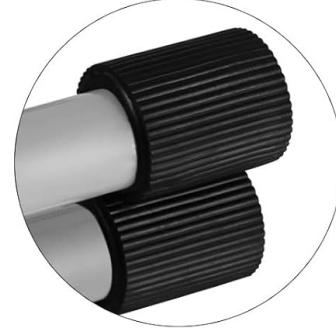
Rubber Pad



A-Frame Stand



Thick Foam Pad



Non Slip Base

Constructed from durable steel with a sleek gray finish. Features two arms with non-slip soft EVA foam and rubber pads on the foot ends to protect your instrument from scratches, slips, or falls.

Foldable Design



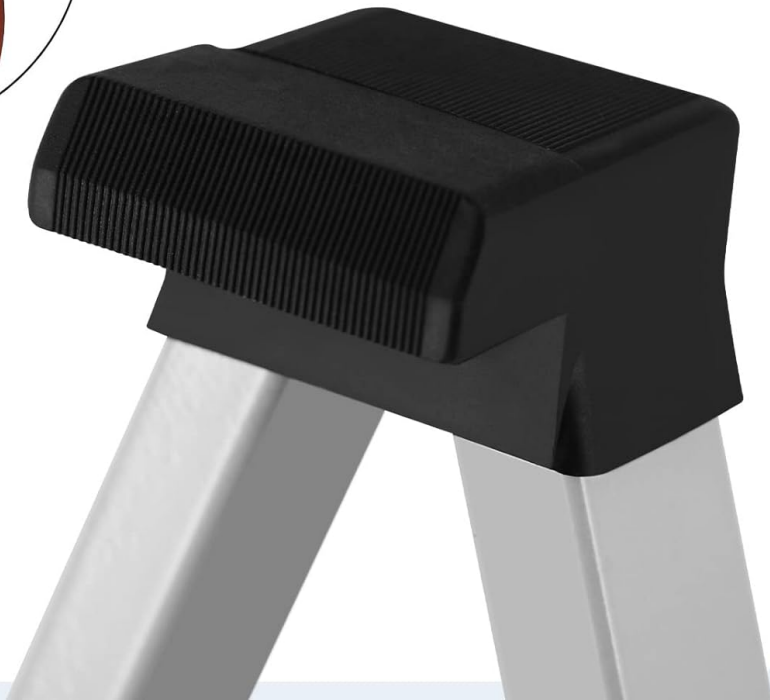
The stand features a foldable design that requires no assembly, making it easy to use and store. When folded, it is compact for transport.

Instrument Protection

Rubber Cushion



**Avoid scratching the lacquered surface
of Musical instrument**



The stand incorporates high-quality cotton pads and rubber cushions at all contact points to prevent scratches or abrasions on your instrument's finish.

Multifunctional Design

Suitable Instruments



Electric guitar

Bass

Cello

Ukulele

Acoustic guitar

Banjo

The A-frame design is versatile, accommodating not only guitars but also basses, ukuleles, banjos, mandolins, and other similar musical instruments of various sizes and shapes.

Stable Triangular Structure

Triangular Structure



The use of a stable triangle structure makes the bracket more stable on the ground



The stable triangular structure ensures the stand remains firm and upright, securely supporting your instrument.

SETUP AND ASSEMBLY

The EASTROCK A-Frame Portable Foldable Guitar Stand requires no assembly. It arrives pre-assembled and ready for immediate use.

1. Carefully remove the stand from its packaging.
2. Gently pull the two main legs apart until the stand forms a stable 'A' shape. The internal mechanism will lock it into the open position.
3. Ensure all four rubber feet are firmly on a flat, stable surface.
4. Verify that the instrument support arms are extended and the foam padding is intact.



Image: The guitar stand fully unfolded and ready for use.

OPERATING INSTRUCTIONS

Once the stand is set up, follow these steps to safely place your instrument:

1. Hold your instrument securely with both hands.
2. Align the bottom edge of your instrument with the padded support arms at the base of the stand.
3. Gently lower the instrument onto the support arms, ensuring it rests evenly on both.
4. Lean the body of the instrument against the padded back support of the stand.
5. Confirm that the instrument is stable and balanced before releasing your hands.



Image: A guitar resting securely on the stand, illustrating proper placement.

MAINTENANCE

- **Cleaning:** Wipe the metal frame with a soft, dry cloth. For stubborn dirt, a slightly damp cloth can be used, followed by immediate drying. Avoid abrasive cleaners or solvents.
- **Padding Care:** Inspect the foam and rubber padding regularly for tears, cracks, or excessive wear. Clean the padding with a mild soap solution if necessary, and allow it to air dry completely.
- **Joints:** The folding joints are designed for smooth operation. If they become stiff, a small amount of silicone-based lubricant can be applied, taking care to avoid contact with the instrument.

STORAGE

To fold the stand for storage or transport:

1. Ensure no instrument is on the stand.
2. Gently push the two main legs together until the stand collapses into its folded position.
3. The stand will become compact, making it easy to store in tight spaces or carry to different locations.



Image: The stand in its folded, compact state, with dimensions for storage.

TROUBLESHOOTING

Problem	Possible Cause	Solution
Stand feels unstable.	Not fully unfolded; uneven surface; instrument not centered.	Ensure the stand is fully locked into its open position. Place on a flat, level surface. Center the instrument on the support arms.
Instrument slides on the stand.	Worn or dirty padding; instrument not properly seated.	Clean the foam and rubber padding. Ensure the instrument is fully seated against the back support and on both bottom arms.
Stand does not fold smoothly.	Dust or debris in joints; lack of lubrication.	Clean the hinge areas. Apply a small amount of silicone-based lubricant to the joints if necessary.

SPECIFICATIONS

Brand: EASTROCK

Model: B0BVQPWZPR

Material: Metal (Steel)

Color: Gray (Matte Grey with Textured Feet)

Shape: A-frame

Assembly Required: No

Item Weight: 2.59 pounds

Package Dimensions: 16.65 x 12.36 x 3.46 inches

Compatibility: Guitars, Basses, Ukuleles, Banjos, Mandolins, and similar stringed instruments.

WARRANTY AND SUPPORT

For warranty information or product support, please refer to the purchase documentation or contact EASTROCK customer service directly through the retailer where the product was purchased. Keep your proof of purchase for any warranty claims.