

## Manuals+

[Q & A](#) | [Deep Search](#) | [Upload](#)

[manuals.plus](#) /

- › [Dopesplay](#) /
- › [Dopesplay DR1561G Series Portable Monitor User Manual](#)

## Dopesplay KU-OMDG-QDBR

# Dopesplay DR1561G Series Portable Monitor User Manual

Model: KU-OMDG-QDBR | Brand: Dopesplay

## 1. INTRODUCTION

Thank you for choosing the Dopesplay DR1561G Series Portable Monitor. This 15.6-inch portable display features a 120Hz refresh rate, FHD 1080p IPS panel with HDR support, and 10-point multi-touch functionality. Equipped with a built-in 10800mAh battery, it offers enhanced portability and convenience for various applications, including gaming, professional work, and mobile entertainment. This manual provides essential information for setting up, operating, maintaining, and troubleshooting your new portable monitor.



Image: The Dopesplay DR1561G Portable Monitor, showcasing its 15.6-inch display, 120Hz refresh rate, and 10-point touch capabilities, with a built-in 10800mAh battery.

## 2. WHAT'S IN THE BOX

Please verify that all items listed below are included in your package:

- 1 x Dopesplay 15.6 Portable Monitor

- 1 x USB-C to USB-C Cable (Full-featured)
- 1 x Mini HDMI to HDMI Cable (Data transfer only)
- 1 x USB-C to USB-A Cable (For power supply only)
- 1 x User Guide



Image: A visual representation of the Dopesplay portable monitor's packaging contents, including the monitor, various cables, and the user guide.

## 3. KEY FEATURES

### 3.1. 120Hz High Refresh Rate

Experience incredibly smooth visuals with the 120Hz refresh rate, reducing motion blur and providing a fluid experience for gaming, video playback, and fast-paced applications.

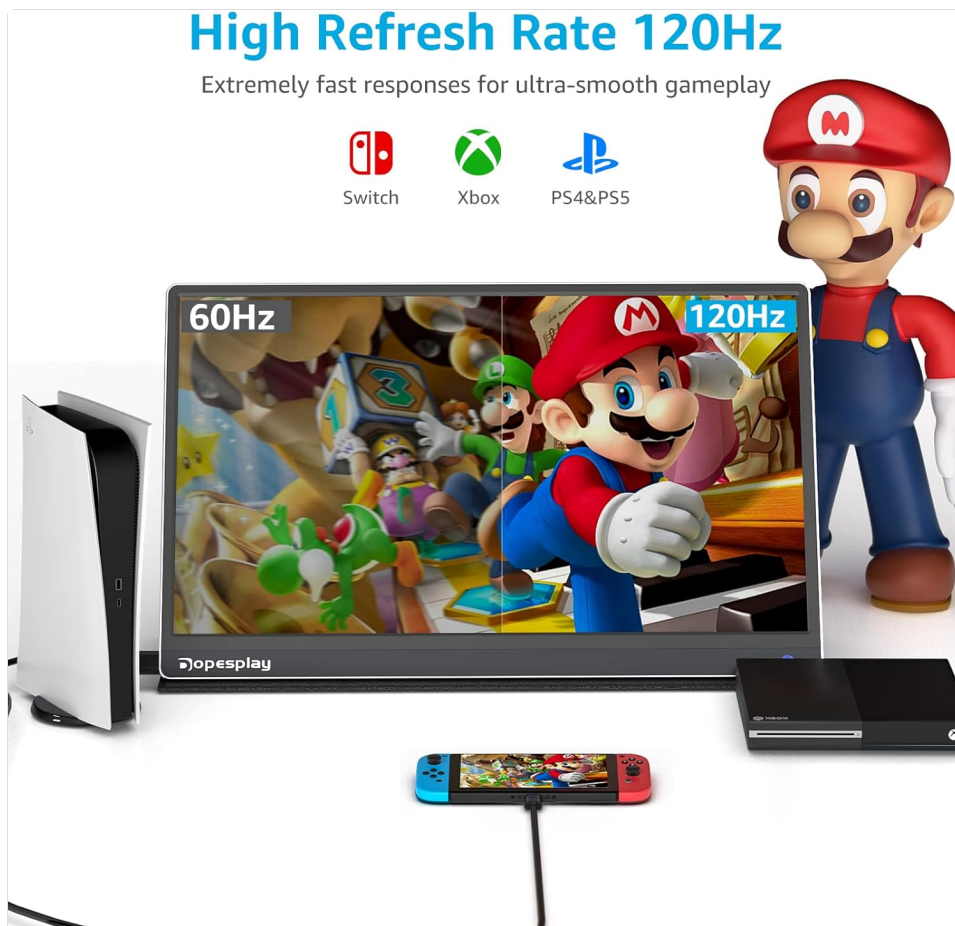


Image: A split image demonstrating the visual difference between 60Hz and 120Hz refresh rates on the Dopesplay monitor, highlighting smoother motion at 120Hz.

### 3.2. 10-Point Multi-Touch Screen

Interact directly with your content using the responsive 10-point multi-touch display. This feature enhances productivity and provides intuitive control for compatible devices.

**Note: Touch screen functionality is not supported on Apple devices due to operating system limitations. For other devices, ensure your Type-C port is full-featured to enable touch.**



Image: A hand demonstrating multi-touch gestures on the Dopesplay portable monitor, illustrating its 10-point touch capability for improved work efficiency.

### 3.3. Built-in 10800mAh Battery

The integrated 10800mAh battery provides extended usage time, allowing you to use the monitor on the go without constant access to a power outlet. It also supports reverse charging for compatible devices.



Image: The Dopesplay portable monitor is shown charging a smartphone, highlighting its built-in 10800mAh battery and reverse charging capability.

### 3.4. FHD 1080p HDR IPS Screen

Enjoy vibrant colors and wide viewing angles with the Full HD 1920x1080 IPS panel, enhanced with HDR (High Dynamic Range) support for improved contrast and detail.



Image: The Dopesplay portable monitor showcasing its FHD 1080p HDR IPS screen with vivid image quality and wide viewing angles.

### 3.5. Built-in Speakers

The monitor includes four built-in speakers, providing high-quality audio for an immersive experience, whether you're watching videos, playing games, or participating in conferences.

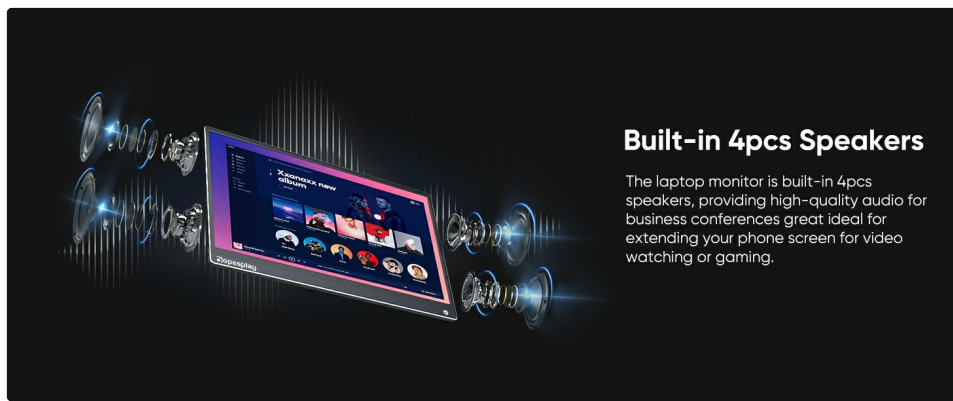


Image: An illustration of the Dopesplay portable monitor highlighting its four built-in speakers, designed to provide high-quality audio.

### 3.6. Magnetic Smart Cover

The included magnetic smart cover protects the screen during transport and doubles as an adjustable stand, allowing for various viewing angles (110° and 125°).

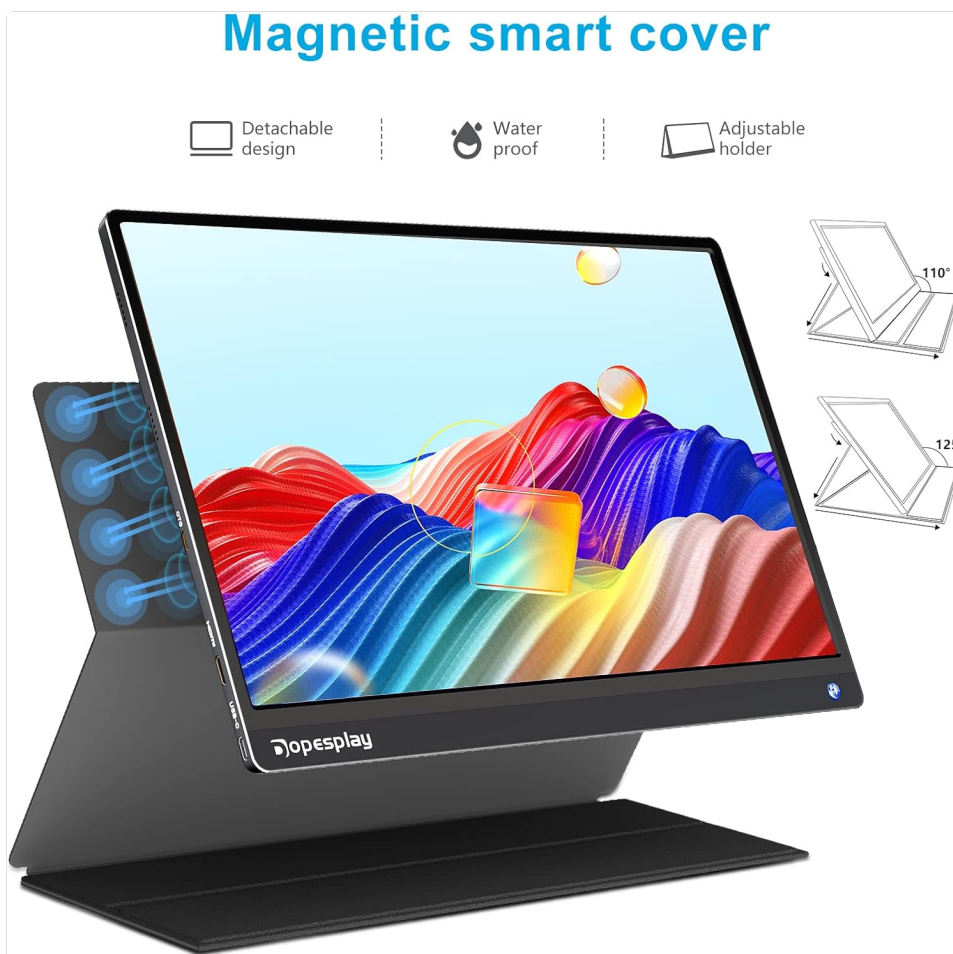


Image: The Dopesplay portable monitor with its magnetic smart cover, demonstrating its detachable design, waterproof properties, and adjustable holder for different viewing angles.

## 4. SETUP GUIDE

### 4.1. Connecting Your Device

The Dopesplay portable monitor offers versatile connectivity options:

- **USB-C (Full-featured):** For devices with a full-featured USB-C port (e.g., many laptops, smartphones, tablets), a

single USB-C to USB-C cable can transmit both video, audio, power, and touch signals. Connect the full-featured USB-C cable to the monitor's left Type-C input (data transfer only) and your device's compatible USB-C port.

- **Mini HDMI:** For devices with an HDMI output (e.g., gaming consoles, PCs, some laptops), use the Mini HDMI to HDMI cable for video and audio transmission. You will also need to connect the monitor to a power source via the USB-C charge port (for power supply only) using the USB-C to USB-A cable and a power adapter.
- **Power Supply:** The monitor can be powered via its built-in battery or by connecting the USB-C charge port to a power adapter (24W USB-C charging block included).



Image: A detailed diagram illustrating the various ports on the Dopesplay portable monitor (Volume, OTG, Brightness, Mini HDMI input, Type C charge port, Type C input) and examples of compatible devices such as cell phones, laptops, iPads, Switches, Xbox One, PS4/5, and PCs.

## 4.2. Activating Touch Screen Function (Extend Mode for PC)

To enable touch functionality in Extend Mode on a Windows PC:

1. Ensure both the full-featured USB-C cable (for data/touch) and a separate power cable (if needed) are connected to the monitor and your PC.
2. On your PC, navigate to the Control Panel.
3. Select "Hardware and Sound" then "View devices and printers."
4. Click on "Tablet PC Settings."
5. Under "Display Options," click "Setup..." to configure your pen and touch display.
6. Follow the on-screen prompts. Tap the Dopesplay monitor screen when instructed.
7. After configuration, the touch screen will be active in Extend Mode.

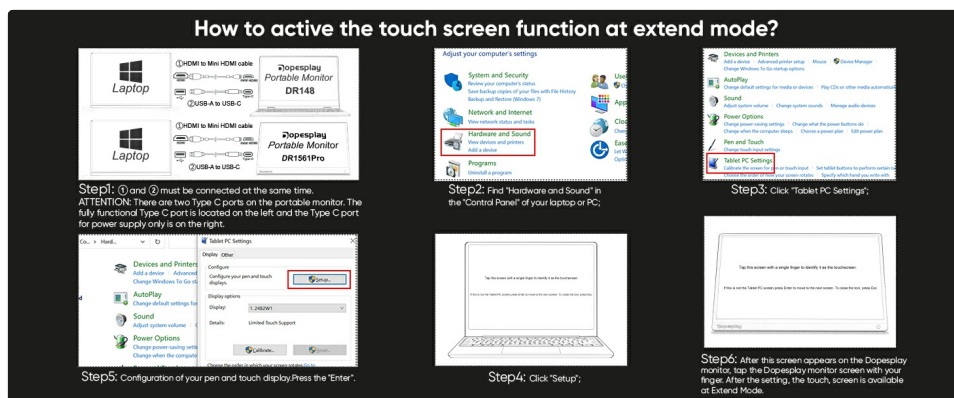


Image: A step-by-step visual guide on how to activate the touch screen function in extend mode for a laptop or PC, showing the necessary connections and Windows settings.

## 5. OPERATING MODES

The Dopesplay portable monitor supports various working modes to suit your needs:

### 5.1. Extend Mode

Extend your desktop workspace across two screens, allowing for increased productivity by displaying different content on each monitor.

### 5.2. Duplicate Mode

Mirror your primary display, ideal for presentations or sharing content with others.

### 5.3. Phone Mode (Projection)

Connect your smartphone via a full-featured USB-C cable to project your phone's screen onto the larger monitor. This is useful for media consumption or light productivity.

### 5.4. Desktop Mode (for compatible phones)

For smartphones that support a desktop-like experience (e.g., Samsung DeX), the monitor can transform your phone into a portable computer workstation.

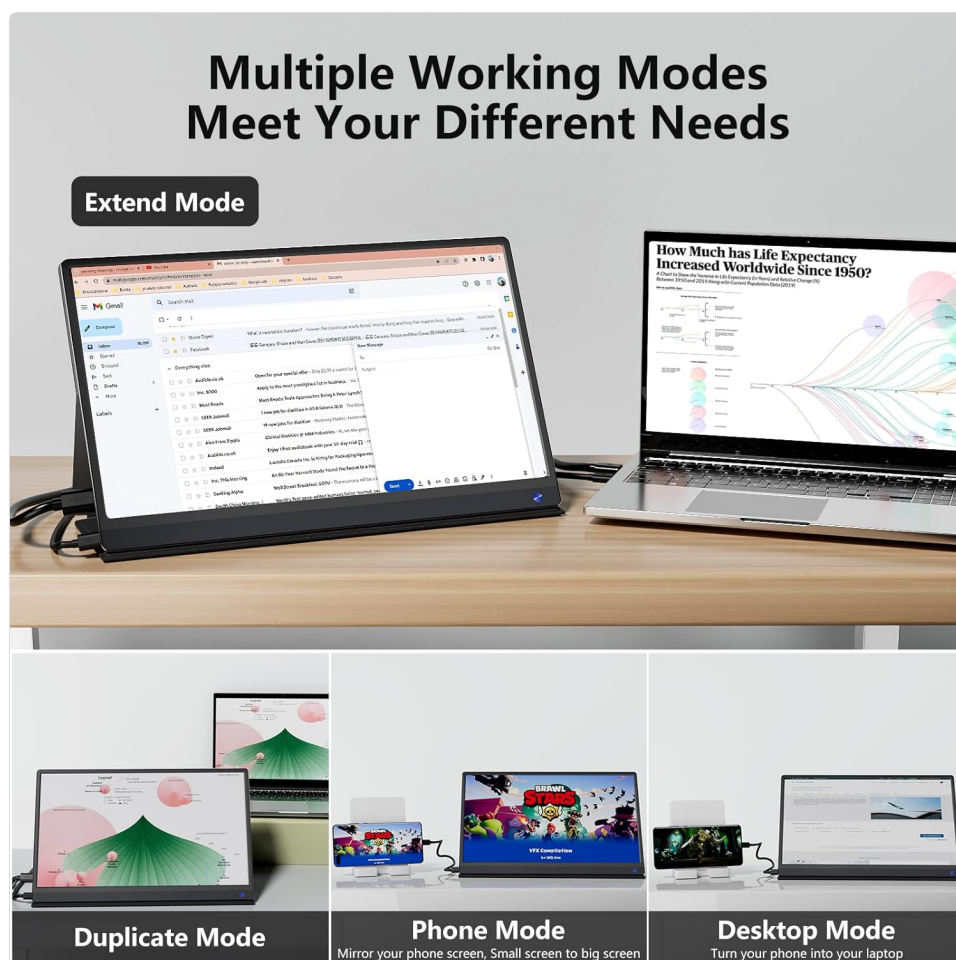


Image: A composite image illustrating the Dopesplay portable monitor in various working modes, including Extend Mode with a laptop, Duplicate Mode, Phone Mode, and Desktop Mode, demonstrating its versatility.

## 5.5. On-Screen Display (OSD) Menu

The OSD menu allows you to adjust various display settings such as brightness, contrast, color temperature, input source, and audio volume. Navigate the menu using the buttons located on the side of the monitor.

## 6. MAINTENANCE

- **Cleaning:** Use a soft, lint-free cloth to gently wipe the screen and exterior. For stubborn marks, slightly dampen the cloth with water or a mild, non-abrasive screen cleaner. Avoid using harsh chemicals or abrasive materials.
- **Storage:** When not in use, store the monitor in a cool, dry place. Utilize the magnetic smart cover to protect the screen from dust and scratches.
- **Battery Care:** To prolong battery life, avoid fully discharging the battery frequently. If storing for an extended period, charge the battery to approximately 50% before storage.

## 7. TROUBLESHOOTING

If you encounter issues with your Dopesplay portable monitor, please refer to the following common solutions:

Problem	Possible Cause / Solution
---------	---------------------------

Problem	Possible Cause / Solution
No display / Black screen	<ul style="list-style-type: none"> <li>• Ensure the monitor is powered on and sufficiently charged.</li> <li>• Verify that the video cable (USB-C or HDMI) is securely connected to both the monitor and your device.</li> <li>• Check the input source setting on the monitor's OSD menu to ensure it matches your connection.</li> <li>• Try a different cable or device to rule out cable/device issues.</li> </ul>
Touch screen not working	<ul style="list-style-type: none"> <li>• <b>Apple Devices:</b> Touch screen functionality is not supported on Apple devices.</li> <li>• <b>Other Devices:</b> Ensure your device's USB-C port is full-featured and the full-featured USB-C cable is used.</li> <li>• For Windows PCs, follow the "Activating Touch Screen Function" steps in Section 4.2.</li> <li>• Ensure the USB-C cable is capable of data transfer, not just power. Some USB-C cables are power-only.</li> </ul>
Monitor not charging / Battery issues	<ul style="list-style-type: none"> <li>• Ensure you are using the included 24W USB-C charging block and cable, or a compatible high-power USB-C charger.</li> <li>• Verify the charging cable is connected to the monitor's dedicated USB-C charge port (for power supply only).</li> <li>• The battery may have been fully depleted. Allow some time for it to charge.</li> </ul>
No audio from monitor speakers	<ul style="list-style-type: none"> <li>• Check the volume level on the monitor's OSD menu and on your connected device.</li> <li>• Ensure the audio output on your device is set to the Dopesplay monitor.</li> <li>• If using HDMI, ensure the HDMI cable supports audio transmission.</li> </ul>

For more detailed troubleshooting, please refer to the official [Troubleshooting Guide \(PDF\)](#) provided by Dopesplay.

## 8. SPECIFICATIONS

Feature	Detail
Product Dimensions	8.91 x 14.16 x 0.36 inches
Item Weight	2.91 pounds
Manufacturer	Dopesplay
ASIN	B0BVQ71LQL
Item Model Number	KU-OMDG-QDBR
Batteries	1 A batteries required (built-in)
Date First Available	October 20, 2022

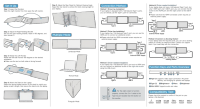
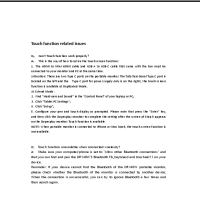
Feature	Detail
Standing Screen Display Size	15.6 Inches
Aspect Ratio	16:9
Voltage	12 Volts
Resolution	1920 x 1080 Pixels (FHD 1080p)
Total USB Ports	2 (Type-C)
Screen Surface Description	Glossy
Refresh Rate	120Hz
Touch Function	10-point Multi-Touch
Battery Capacity	10800mAh

## 9. WARRANTY AND SUPPORT

For warranty information and customer support, please refer to the documentation included with your product or contact Dopesplay directly through their official channels. The manufacturer typically provides support for product defects and operational issues.

You can also refer to the [Troubleshooting Guide \(PDF\)](#) for additional assistance.

### Related Documents - KU-OMDG-QDBR

	<p><a href="#">Dopesplay 14.1" Triple Portable Monitor User Guide and Setup Instructions</a></p> <p>Comprehensive guide for setting up, connecting, and troubleshooting the Dopesplay 14.1 inch triple portable monitor for laptops. Learn about installation, connection methods, and common issues.</p>
	<p><a href="#">Dopesplay Portable Monitor DR148W Troubleshooting and User Guide</a></p> <p>Comprehensive guide to troubleshooting and using the Dopesplay DR148W portable monitor, covering touch function, Apple product connectivity, wireless connections, charging, and other features.</p>

