



Manuals.plus /

› Dieffematic /

› Dieffematic AT 7070 UNIKO 24VCC Control Unit Instruction Manual

## Dieffematic AT7070

# Dieffematic AT 7070 UNIKO 24VCC Control Unit Instruction Manual

Model: AT7070 | Brand: Dieffematic

## 1. INTRODUCTION

---

This manual provides detailed instructions for the installation, operation, and maintenance of the Dieffematic AT 7070 UNIKO 24VCC Control Unit. This unit is designed for the automation of selective and overhead doors, offering reliable control and advanced features. Please read this manual thoroughly before proceeding with installation or operation to ensure safe and correct usage.

## 2. PRODUCT OVERVIEW AND FEATURES

---

The Dieffematic AT 7070 UNIKO is a 24VCC control unit (SKU: G030) specifically designed for UNIKO Dieffematic systems. It is an original Dieffematic spare part, ensuring compatibility and performance. Key features include:

- **24VCC Control Unit:** Optimized for low voltage applications.
- **Compatibility:** Designed for UNIKO Dieffematic selective and overhead door automation systems.
- **Self-Learning Receiver:** Integrated receiver for easy remote control pairing.
- **Rolling Code Management:** Enhanced security with dynamic code changes.
- **LED Lighting:** Includes support for courtesy light functionality.
- **Monophase Control:** Suitable for 1 or 2 motors (230 Vac).
- **Advanced Control:** Features 4 limit switches, 4 operating modes, automatic time learning, and independent slowdown programming.

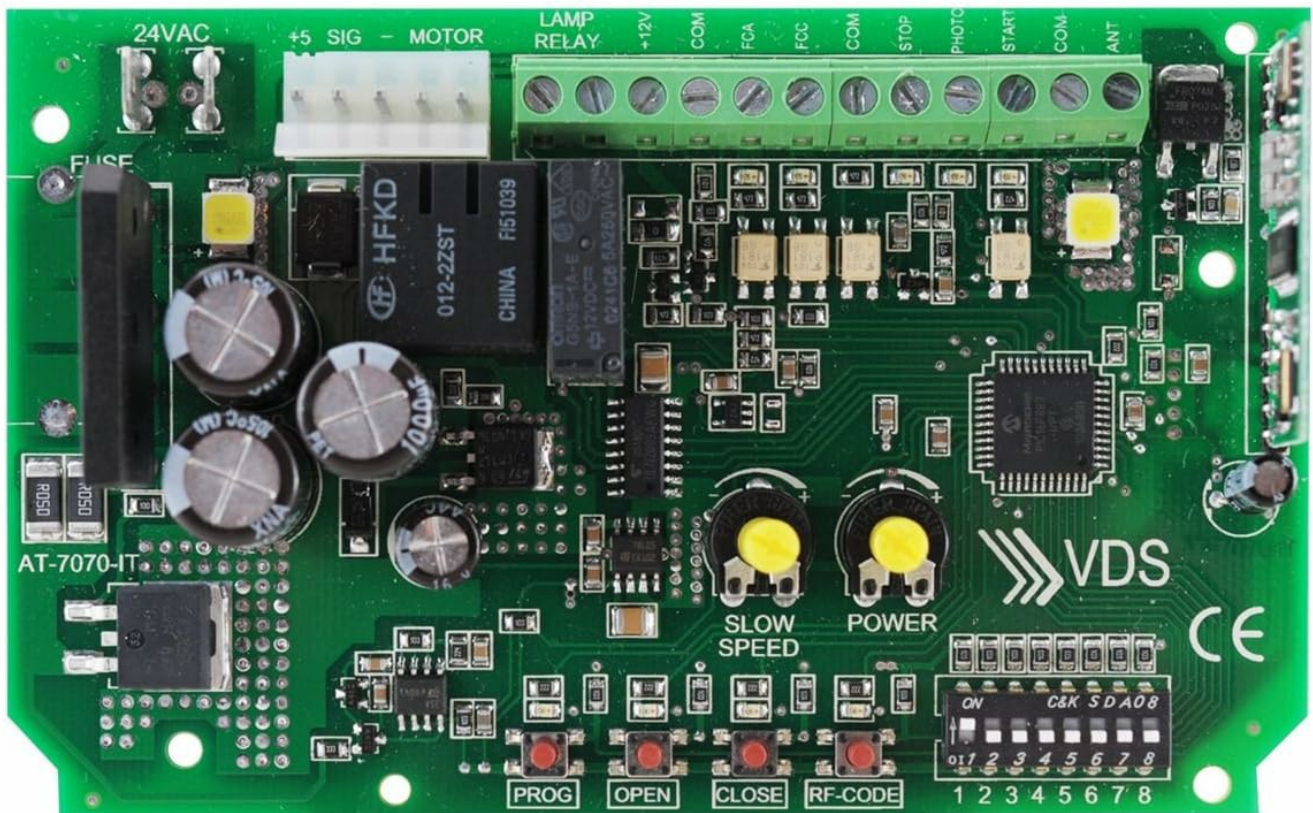


Figure 1: Dieffematic AT 7070 UNIKO 24VCC Control Unit. This image shows the green circuit board with a brown transformer, multiple relays, and terminal blocks for connections. A red 4-button remote control is also visible.

### 3. SETUP AND INSTALLATION

Proper installation is crucial for the safe and efficient operation of your control unit. It is recommended that installation be performed by qualified personnel.

#### 3.1 Wiring and Connections

Ensure all power is disconnected before making any electrical connections. Connect the 24VCC power supply to the designated terminals. Connect the motor(s), limit switches, and any safety devices (e.g., photocells) to their respective terminals as indicated on the circuit board.

Your browser does not support the video tag.

Video 1: Programming the Start S4XL and associating IDOR 100 remote controls. This video demonstrates the process of programming the control unit and pairing a remote control, showing the lights on the board indicating successful operations.

## 3.2 Remote Control Pairing

The control unit features a self-learning receiver for easy pairing with compatible remote controls. Follow the specific instructions provided with your remote control for pairing. Generally, this involves pressing a programming button on the control unit and then a button on the remote.

## 3.3 Initial Programming

The AT 7070 UNIKO offers automatic time learning and independent slowdown programming. Refer to the detailed programming section in the full manual for specific steps on setting up opening/closing times and slowdown points. This ensures smooth and safe gate operation.

Your browser does not support the video tag.

*Video 2: Universal Control Unit for Automatic Swing Gates with 1/2 Doors (START-S4XL Came BFT Nice etc.). This video illustrates the functionality of a universal control unit, demonstrating how it controls the opening and closing of a gate, with lights indicating the status.*

Your browser does not support the video tag.

*Video 3: IDOR-100 video tutorial. This tutorial provides a visual guide on the operation of the control unit, including how to trigger opening and closing actions using a remote and external contacts.*

## 4. OPERATING INSTRUCTIONS

---

Once installed and programmed, operating the Dieffematic AT 7070 UNIKO control unit is straightforward:

- **Remote Control:** Press the programmed button on your remote control to initiate the gate's opening or closing cycle.
- **External Commands:** The unit can also be operated via external command devices such as key switches or push buttons connected to the appropriate terminals.
- **Safety Features:** The system is designed with safety in mind. Ensure all safety devices (e.g., photocells) are correctly installed and functioning to prevent accidental closures or impacts.

## 5. MAINTENANCE

---

Regular maintenance helps ensure the longevity and optimal performance of your Dieffematic AT 7070 UNIKO control unit and automated gate system.

- **Visual Inspection:** Periodically inspect all wiring and connections for signs of wear, corrosion, or damage.
- **Cleanliness:** Keep the control unit free from dust, dirt, and moisture. Use a soft, dry cloth for cleaning.
- **Functionality Check:** Regularly test the gate's opening and closing cycles, including safety features like photocells and limit switches, to ensure they are working correctly.
- **Professional Servicing:** For complex issues or annual checks, it is advisable to contact a qualified technician.

## 6. TROUBLESHOOTING

---

If you encounter issues with your control unit, consider the following basic troubleshooting steps:

- **No Power:** Check the main power supply and the unit's fuses.
- **Remote Not Working:** Verify the remote's battery and ensure it is correctly paired with the control unit.
- **Gate Not Moving:** Check motor connections, limit switch functionality, and ensure no obstructions are blocking the gate's path.
- **Intermittent Operation:** Inspect wiring for loose connections or damage. Check for interference with the remote signal.

If problems persist after basic troubleshooting, consult a professional technician or refer to the comprehensive

troubleshooting guide in the full product manual.

## 7. SPECIFICATIONS

Feature	Detail
Model	AT 7070 UNIKO
SKU	G030
Power Supply	24VCC
Motor Compatibility	1 or 2 monophase motors (230 Vac)
Receiver	Integrated self-learning, Rolling Code
Control Features	4 limit switches, 4 operating modes, automatic time learning, independent slowdown programming
Courtesy Light	LED lighting support
ASIN	B0BVFZPFDH
First Available Date	December 21, 2022

## 8. WARRANTY AND SUPPORT

For warranty information, please refer to the documentation included with your purchase or contact Dieffematic customer support directly. For technical assistance, troubleshooting beyond the scope of this manual, or spare parts, please reach out to your authorized Dieffematic dealer or visit the official Dieffematic website.