



[Manuals.plus](#) /

> [vidaXL](#) /

> vidaXL Inflatable Stand Up Paddleboard (SUP) Instruction Manual - Model 92738

vidaXL 92738

vidaXL Inflatable Stand Up Paddleboard (SUP) Instruction Manual

Model: 92738

INTRODUCTION

This manual provides essential instructions for the safe and effective use, setup, operation, and maintenance of your vidaXL Inflatable Stand Up Paddleboard (SUP) Set, Model 92738. Please read this manual thoroughly before initial use and retain it for future reference.

The vidaXL Inflatable SUP is designed for recreational paddling, learning, and small wave riding, offering stability and comfort for users from beginner to advanced levels. It can be used as a paddleboard or kayak.

Included Components:

- 1 x Inflatable SUP board
- 1 x Aluminum oar
- 1 x Removable fin
- 1 x High pressure hand pump with high pressure gauge
- 1 x Repair kit
- 1 x Leash
- 1 x Carrying bag

SAFETY INFORMATION

Always prioritize safety when using your SUP board. Failure to follow safety guidelines can result in serious injury or death.

- **Adult Supervision:** This product is designed for adults. Children should only use the SUP under strict adult supervision.
- **Wear a Life Vest:** Always wear a U.S. Coast Guard-approved personal flotation device (PFD) when using the SUP.

- **Leash Use:** Always attach the included leash to your ankle and the board to prevent separation in the water.
- **Check Weather Conditions:** Do not use the SUP in adverse weather conditions, strong currents, or high winds.
- **Know Your Limits:** Do not paddle beyond your skill level or physical capabilities.
- **Avoid Obstacles:** Be aware of your surroundings and avoid obstacles such as rocks, submerged objects, and other watercraft.
- **Maximum Load Capacity:** Do not exceed the maximum load capacity of 308.6 lb (140 kg).
- **Inflation Pressure:** Do not over-inflate the board. Maintain the recommended maximum working pressure of 0.8 bar (12 psi).
- **Alcohol/Drugs:** Never operate the SUP under the influence of alcohol or drugs.

SETUP

Follow these steps to prepare your inflatable SUP board for use.

1. **Unpack the Board:** Remove the SUP board and all accessories from the carrying bag. Lay the board flat on a clean, smooth surface.
2. **Inflate the Board:**
 - Locate the high-pressure valve on the board. Ensure the valve pin is in the 'up' position (closed) to prevent air from escaping.
 - Attach the hose from the high-pressure hand pump to the valve. Twist to secure.
 - Begin pumping air into the board. The pressure gauge on the pump will start to register once the board becomes firm.
 - Inflate the board to the recommended pressure of 0.8 bar (12 psi). Do not exceed this pressure.
 - Once inflated, quickly detach the pump hose and replace the valve cap securely.

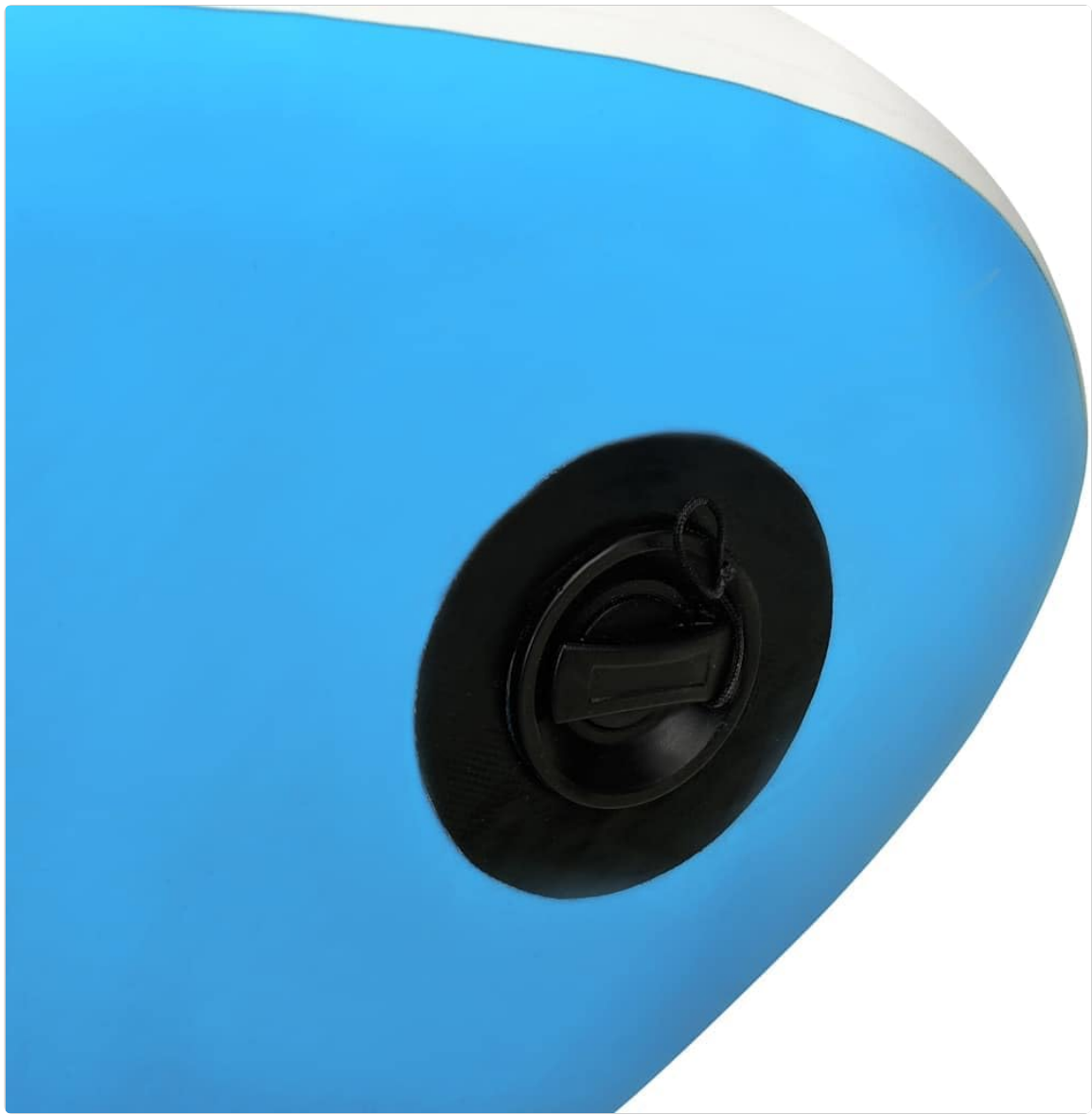


Image: High-pressure inflation valve on the SUP board.

3. **Attach the Fin:**

- Slide the removable fin into the fin box located on the underside of the board at the rear.
- Secure the fin with the provided clip or pin, ensuring it is firmly in place.



Image: Removable fin installation.

4. Assemble the Oar:

- Connect the sections of the aluminum oar. Ensure the paddle blade is facing the correct direction.
- Adjust the oar length to your height. A common guideline is that the oar handle should reach your wrist when your arm is extended overhead. Secure the adjustment clamp.

5. Attach the Leash:

- Attach one end of the leash to the D-ring at the tail of the SUP board.
- The other end of the leash will attach to your ankle when you are on the board.

OPERATING

Basic guidelines for using your vidaXL Inflatable SUP board.

1. **Entering the Water:** Carry the inflated board to the water's edge. Ensure the fin is clear of the bottom to prevent damage.
2. **Getting On:**
 - Start by kneeling on the center of the board, just behind the handle.
 - Once stable, place your paddle across the board in front of you.
 - Slowly stand up one foot at a time, placing your feet shoulder-width apart over the center line of the board. Keep your knees slightly bent and your core engaged for balance.
3. **Paddling Technique:**

- Hold the paddle with one hand on the T-grip and the other on the shaft. The blade should be angled away from you.
- Reach forward with the paddle, insert the blade fully into the water, and pull it back towards your feet.
- Use your core muscles, not just your arms, for efficient paddling.
- To go straight, alternate paddling on each side of the board.
- To turn, paddle on one side only, or use a sweep stroke (paddling in a wide arc).

4. **Falling Off:** If you fall, try to fall away from the board. The leash will keep the board close. Climb back on by grabbing the handle and kicking your legs to propel yourself onto the board.



Image: The vidaXL Inflatable SUP board ready for use.

MAINTENANCE

Proper maintenance ensures the longevity and performance of your SUP board.

1. **Cleaning:** After each use, rinse the board thoroughly with fresh water to remove salt, sand, and dirt. Use mild soap if necessary, then rinse completely.
2. **Drying:** Ensure the board is completely dry before deflating and storing. Drying prevents mildew and

material degradation.

3. Deflating and Storage:

- Open the valve cap and press the valve pin down to the 'open' position to release air.
- Once deflated, roll the board tightly from the nose to the tail, pushing out any remaining air.
- Store the board and accessories in the provided carrying bag in a cool, dry place, away from direct sunlight and extreme temperatures.

4. **UV Protection:** While the board is UV-proof, prolonged exposure to direct sunlight when not in use can still affect its lifespan. Store it in the shade or covered.

5. **Repair Kit:** The included repair kit can be used for minor punctures. Clean the damaged area, apply adhesive (not included, check local regulations for suitable PVC adhesive), and patch according to the repair kit instructions. Allow sufficient drying time before re-inflating.

TROUBLESHOOTING

Common issues and their solutions.

- **Board is losing air:**

- Check the valve: Ensure the valve cap is tightly secured and the valve pin is in the 'up' (closed) position after inflation.
- Inspect for punctures: Inflate the board and apply soapy water to the surface. Bubbles indicate a leak. Use the repair kit for small punctures.

- **Board feels unstable:**

- Check inflation pressure: Ensure the board is inflated to the recommended 12 psi. Under-inflation can lead to instability.
- Verify fin installation: Make sure the fin is correctly and securely installed. An improperly installed fin can affect tracking and stability.
- Adjust stance: Ensure your feet are centered and shoulder-width apart. Practice kneeling first to build balance.

- **Difficulty paddling straight:**

- Check fin: Ensure the fin is properly installed and not damaged.
- Improve paddle technique: Ensure you are paddling evenly on both sides and using a full stroke.

SPECIFICATIONS

Detailed technical specifications for the vidaXL Inflatable SUP board.

Feature	Specification
Brand	vidaXL
Model Number	92738
Color	Blue

Feature	Specification
Material	Polyvinyl Chloride (PVC), EVA, Aluminum
Inflated Dimensions (L x W x H)	126" x 29.9" x 5.9" (320 cm x 76 cm x 15 cm)
Maximum Number of Persons	1 adult
Maximum Load Capacity	308.6 lb (140 kg)
Maximum Working Pressure	0.8 bar (12 psi)
Puncture-proof	Yes
UV Proof	Yes
Item Weight	11.6 Kilograms
Operator Skill Level	Beginner
Age Range Description	Adult



Image: Dimensions of the vidaXL Inflatable SUP board.

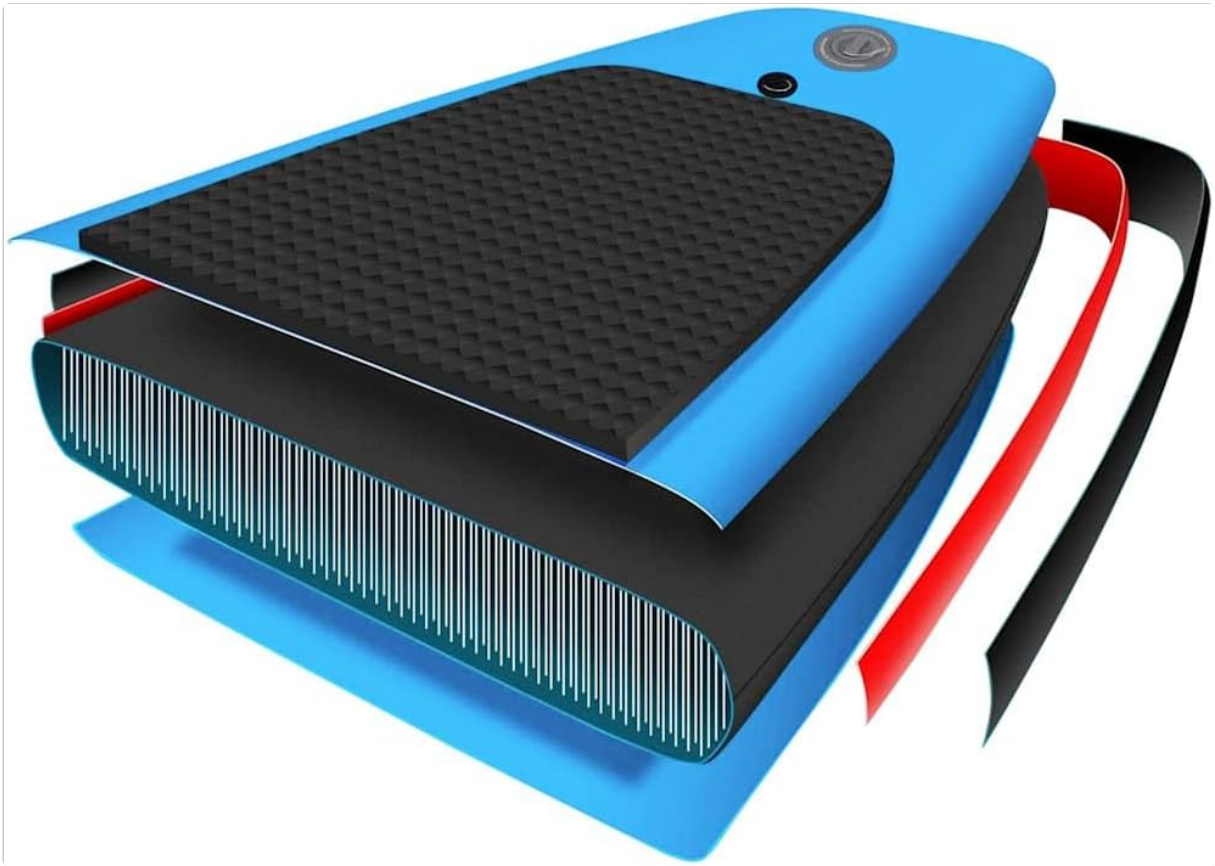


Image: Internal construction layers of the inflatable SUP board.

WARRANTY

All products sold by vidaXL are covered by a minimum 2-year legal guarantee. Please retain your proof of purchase for any warranty claims. For specific terms and conditions, refer to the warranty information provided at the time of purchase or contact vidaXL customer service.

SUPPORT

If you encounter any issues not covered in this manual or require further assistance, please contact vidaXL customer support. You can typically find contact information on the vidaXL website or through your purchase platform.

For more information about vidaXL products, visit the official [vidaXL Store on Amazon](#).