



Manuals.plus /

- › SENMO /
- › SENMO Stylus Pen P6WP-KC User Manual for iPad 2018-2025 Models

SENMO P6WP-KC

SENMO Stylus Pen P6WP-KC User Manual

For iPad Models 2018-2025

INTRODUCTION

This manual provides detailed instructions for the setup, operation, and maintenance of your SENMO Stylus Pen P6WP-KC. Please read this manual thoroughly to ensure proper use and to maximize your product experience.



Image: The SENMO Stylus Pen P6WP-KC in black, accompanied by several replacement nibs, against a colorful background.

COMPATIBILITY

The SENMO Stylus Pen P6WP-KC is designed to work with specific iPad models released from 2018 onwards. It operates

without a Bluetooth connection.

Compatible Models:

- iPad Pro 11-inch (M4, 4th, 3rd, 2nd, 1st generation)
- iPad Pro 12.9-inch (6th, 5th, 4th, 3rd generation)
- iPad Pro 13-inch (M4)
- iPad mini (6th, 5th generation)
- iPad Air (M2, 5th, 4th, 3rd generation)
- iPad (10th, 9th, 8th, 7th, 6th generation)

Important: Please verify your iPad model number before use. The model number is typically found on the back of your iPad.

Designed for iPad 2018 Versions Later				
For iPad Pro 13 inch	For iPad Pro 11 inch	For iPad	For iPad Air	For iPad Mini
(M4) A2925/A2926	(M4 4rd 3rd 2nd 1st Gen) A2759/A2377/A2459/ A2301/A2460/ A2228/A2068/A2230/ A2231/A1980/A2013/ A1934/A1979/ A1876/A2014/A1895/ A1983/A2836/A2837	(10th 9th 8th 7th 6th Gen) A2696 A2602/A2604/A2603/ A2605/A2270/A2428/ A2429/A2430/A2197/ A2200/A2198/A1893 /A1954	(M2 5th 4rd 3rd Gen) A2588/A2589/A2591 A2316/A2324/A2325/ A2072/A2152/A2123/ A2153/A2154/ A2429/A2430/A2197/ A2200/A2198/A1893 /A1954/A2898/A2899/ A2902/A2903	(6th 5th Gen) A2567/A2568/A2569/ A2133/A2124/A2126/ A2125
For iPad Pro 12.9 inch				
(6th 5th 4rd 3rd Gen) A2436/A2378/A2461/ A2379/A2462/ A2229/A2069/A2232/ A2233/A1876/A2014/ A1895/A1983				
Incompatible Models				
iPad Pro 12.9 inch	iPad Pro 10.5/9.7 inch	iPad	iPad Air	iPad Mini
(2nd 1st Gen) A1584/A1652/ A1670/A1821/A1671	(4rd 3rd 2nd 1st Gen) A1701/A1852/A1709 A1673/A1674/A1675	(5th 4rd 3rd 2nd 1st Gen) A1822/A1823/A1458/ A1459//A1416/A1430/ A1395/A1396/A1219/ A1337	(2nd 1st Gen) A1474/A1475 A1566/A1567	(4rd 3rd 2nd 1st Gen) A1538/A1550/A1599/ A1600/A1489/A1490/ A1432/A1454

Image: Detailed compatibility chart showing supported iPad Pro, iPad Air, iPad Mini, and standard iPad models with their corresponding model numbers. It also lists incompatible older iPad models.

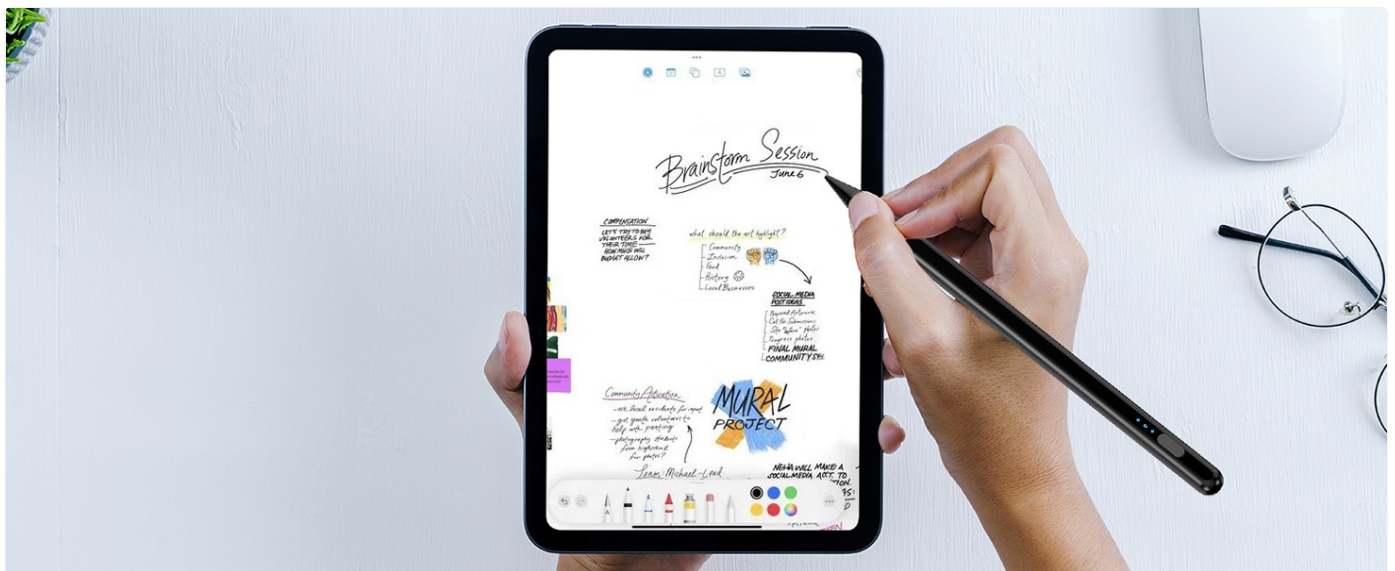


Image: Illustration demonstrating where to find the model number on the back of an iPad to confirm compatibility.

SETUP

1. Initial Power On

To turn on the stylus pen, double-click the top button. The pen does not require Bluetooth pairing for operation.

How to use this iPad pencil ?

Turn on and use directly

Our iPad pencil doesn't have Bluetooth, please double click the top button of the stylus pen to turn it on.



If it doesn't work, Please follow step 1 or step 2 below:

1. Visit setting>Bluetooth>Turn Off Bluetooth



2. Visit setting>Bluetooth>Apple Pencil>Tap ⓘ>Forget This Device



Image: Visual guide showing a finger double-tapping the top of the stylus pen to power it on, with a note indicating no Bluetooth connection is needed.

2. Charging the Stylus Pen

The stylus pen features fast charging. A full charge takes approximately 15 minutes and provides over 10 hours of working time. The pen also has LED indicators to show battery life and charging status. It will automatically enter sleep mode after 5 minutes of inactivity to conserve battery.

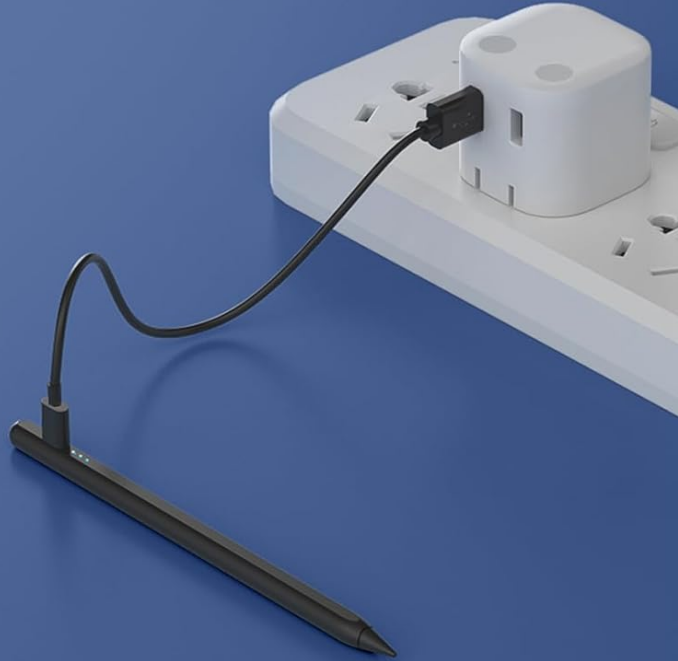
Use the provided Type-C cable to charge the pen.

FAST CHARGING



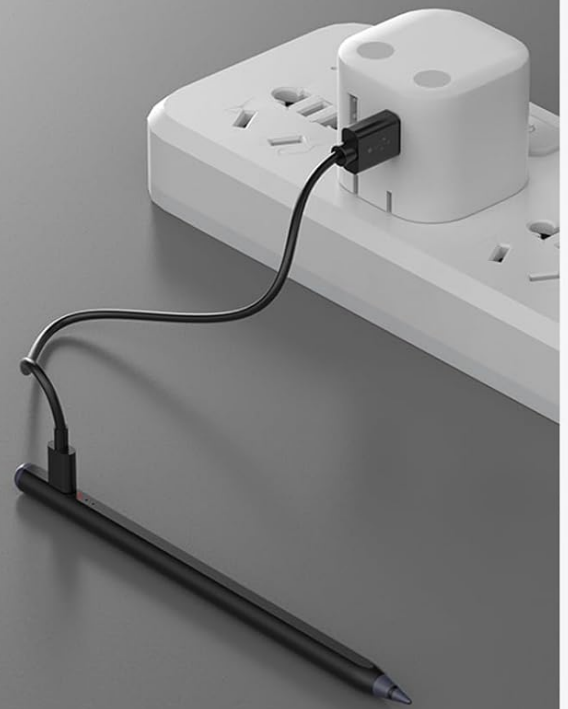
SENMO

5 Mins Auto Sleep



Fully Charged in
15 Minutes

OTHER



Fully Charged in Over
90 Minutes

Image: Comparison graphic illustrating the SENMO stylus pen charging fully in 15 minutes versus other pens taking over 90 minutes, highlighting its fast charging capability and long standby time.

OPERATION

1. Palm Rejection

The stylus pen supports palm rejection technology, allowing you to rest your hand naturally on the iPad screen without creating unintended marks or interference while writing or drawing.

PALM REJECTION TECHNOLOGY

Supports Palm Rejection for Natural Hand Placement.



Stop Worrying about Your Hands and Focus on Writing, Sketching, and, of course, Doodling.

Image: A user demonstrating palm rejection, with their hand resting on the iPad screen while using the stylus, showing no unwanted strokes.

2. Tilt Sensitivity

The pen is equipped with a tilt sensitivity sensor. By adjusting the angle at which you hold the pen, you can vary the thickness of your lines, making it suitable for drawing, sketching, and marking.

SENSITIVE STYLUS



Tilt to Make Thicker or Thinner Line

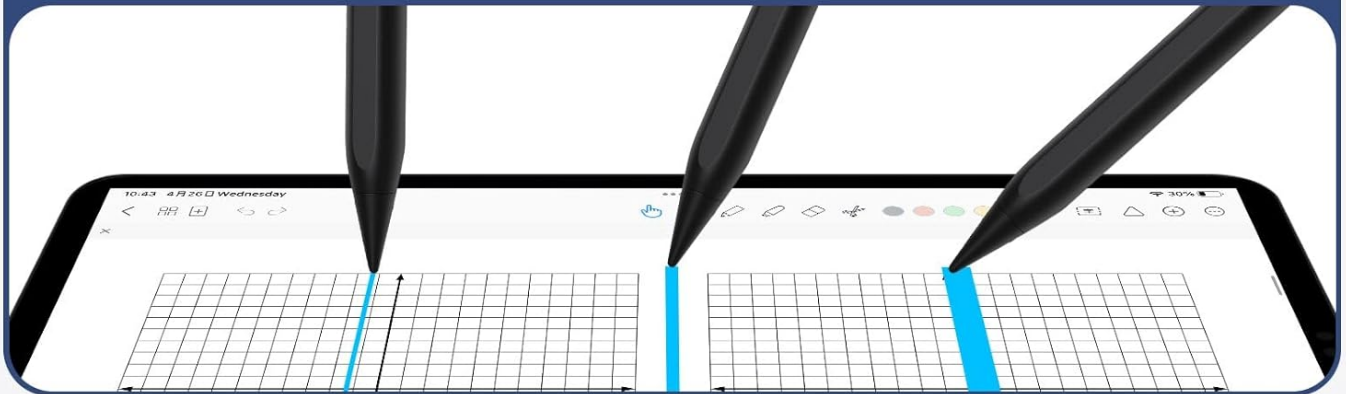


Image: Graphic illustrating how different tilt angles of the stylus pen produce varying line thicknesses on the iPad screen.

3. Magnetic Attachment

The stylus pen features magnetic adsorption, allowing it to attach conveniently to the side of your compatible iPad. This helps prevent loss and keeps the pen easily accessible. Note that magnetic attachment does not charge the pen.



Image: The stylus pen magnetically attached to the side of an iPad, demonstrating its secure and convenient storage.

4. General Usage

The SENMO Stylus Pen provides a smooth and precise writing experience for various tasks, including:

- Drawing and sketching
- Note-taking
- Document annotation
- General navigation



Image: A collage of four scenes depicting the stylus pen being used for drawing, drafting, playing a game, and taking notes on an iPad.

MAINTENANCE

1. Replacing the Pen Nib

The stylus pen comes with replacement nibs. If the pen tip becomes worn, gently twist the old nib counter-clockwise to remove it, then twist a new nib clockwise until secure. This ensures continued precision and responsiveness.



Image: Diagram illustrating the replacement nib design, showing how to remove and install a new nib for 0.1mm pixel precision.

2. Cleaning

Wipe the stylus pen with a soft, dry cloth to keep it clean. Avoid using harsh chemicals or abrasive materials.

TROUBLESHOOTING

If the Stylus Pen is Not Working:

Since this stylus pen does not use Bluetooth, ensure your iPad's Bluetooth is turned off and any previously paired Apple Pencils are disconnected.

1. Turn Off iPad Bluetooth:

- Go to **Settings** > **Bluetooth**.
- Toggle the Bluetooth switch to the **Off** position.

2. Forget Apple Pencil (if previously paired):

- Go to **Settings** > **Bluetooth**.
- Locate "Apple Pencil" in the list of devices.
- Tap the information icon (i) next to "Apple Pencil".
- Select **Forget This Device**.

After performing these steps, double-click the top button of your SENMO Stylus Pen to turn it on and begin use.



Image: Step-by-step visual instructions for troubleshooting, including turning off Bluetooth and forgetting any previously paired Apple Pencil on the iPad.

SPECIFICATIONS

Model Number	P6WP-KC
Brand	SENMO
Dimensions (L x W x H)	3.94 x 0.79 x 0.79 inches
Item Weight	2.46 ounces (0.07 Kilograms)
Material	Plastic
Battery Type	1 Lithium Polymer battery (included)
Charging Time	Approx. 15 minutes for full charge
Working Time	10+ hours
Auto Sleep	5 minutes of inactivity
Standby Time	Up to 360 days

WHAT'S INCLUDED

Upon opening your product package, you will find the following items:

- 1 x SENMO Stylus Pen
- 1 x User Manual (this document)
- 1 x Type-C Charging Cable
- 4 x Replaceable Nibs



Image: A visual representation of the items included in the SENMO Stylus Pen package: the stylus pen, user manual, Type-C charging cable, and four replacement nibs.

SUPPORT AND WARRANTY

For any questions or issues regarding your SENMO Stylus Pen, please contact our support team. We offer reliable 24-hour response service. When contacting support, please provide your order number for efficient assistance. Contact information can typically be found on the product packaging or through your purchase platform.

